



Nintendo Game Boy Advance SP Power Switch Cover Replacement

This guide will walk you through the steps...

Written By: DJ Pantone



INTRODUCTION

This guide will walk you through the steps necessary to replace the power switch cover on your Game Boy Advance SP. The power switch of the Game Boy Advance SP is small and attaches to the motherboard itself. For this reason, the device features a much larger cover to help the user turn their device on and off. Follow this guide if your power switch cover is damaged or needs to be swapped out.

🔧 TOOLS:

Phillips #00 Screwdriver (1)
iFixit Opening Tool (1)
Tri-point Y00 Screwdriver (1)

⚙️ PARTS:

Li-ion Nintendo Game Boy Advance SP
3.7V 600mAh Battery (1)
Game Boy Advance SP Power Switch
(1)

Step 1 — Battery



- Use a standard Phillips #00 screwdriver to loosen the 4 mm screw that keeps the battery cover attached to the device.

Step 2



- Lift the battery cover up and remove it from the device.
- ① The screw will remain attached to the battery cover because of Nintendo's design.

Step 3



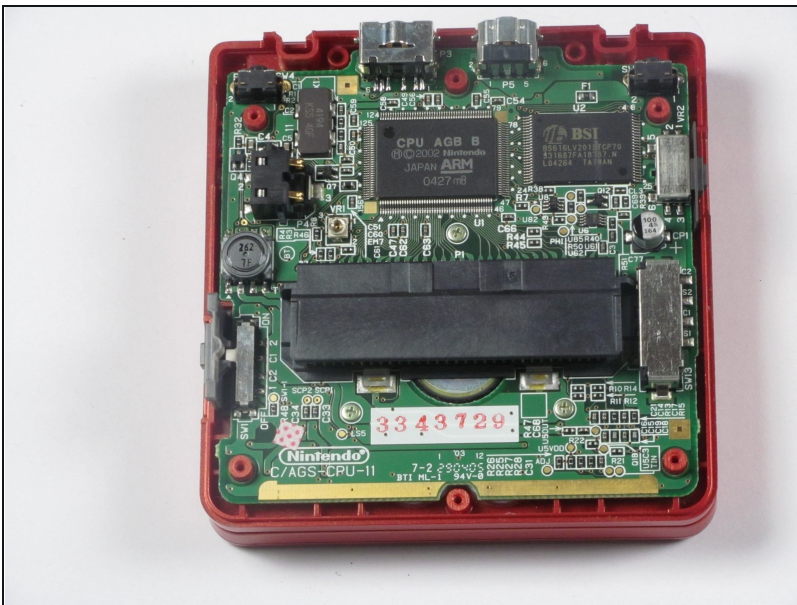
- Use your fingers or a plastic opening tool to remove the battery from the device.
- ⚠ **Caution:** Please exercise caution when handling the battery. If it appears to be swelling or damaged at all it is considered a fire hazard.

Step 4 — Back Cover



- Remove four 6.5 mm screws from the corners of the back cover using a tri-point Y00 screwdriver.
- Remove two 4.6mm screws from the top-center and bottom-center of the device using a tri-point Y00 screwdriver.

Step 5

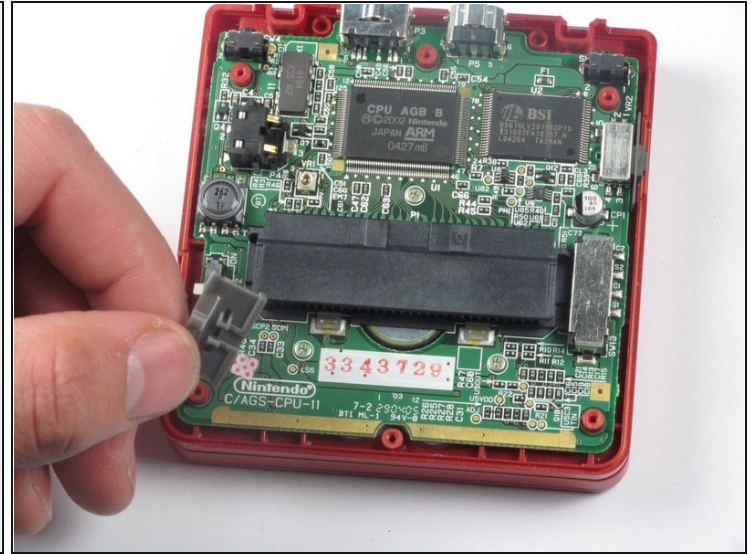
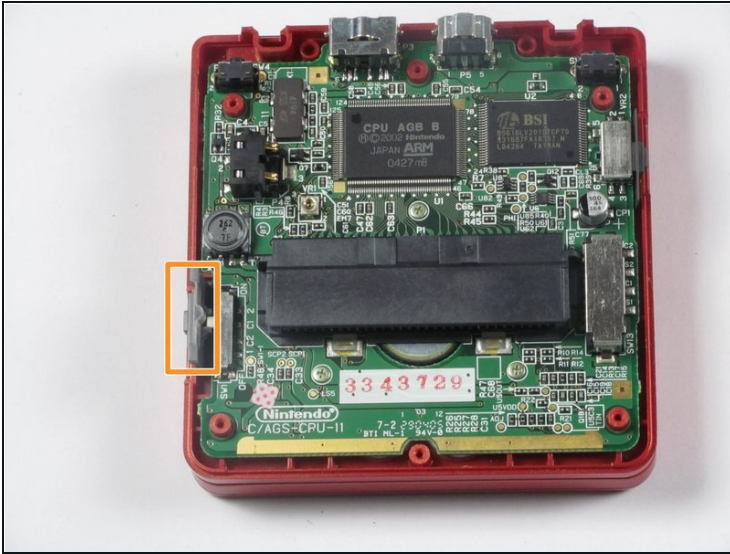


- Lift the back cover off of the device.

⚠ Potential for device damage: These inner components are vulnerable to static electricity. Exercise caution when handling these next steps to prevent damaging the device.

- ☑ Look out for the power switch that can fall out when taking the back cover off.

Step 6 — Power Switch Cover



- Lift the power switch cover away from the left side of the device using your fingers or [tweezers](#).

To reassemble your device, follow these instructions in reverse order.