



HP Envy M6-1205DX Palm Rest Replacement

This is a guide replacing the palm rest and the keyboard on the HP Envy m6-1205dx laptop.

Written By: Ryan Hatton



INTRODUCTION

If your HP Envy M6-1205dx laptop has a broken front panel or poor functioning keys on the keyboard, it may be time to replace your palm rest or keyboard. This is a guide for replacing the palm rest or the keyboard on the HP Envy m6-1205dx laptop.

Before beginning the repair make sure that the software is not disabling some keys. Make sure that the laptop is powered down before proceeding with this guide.



TOOLS:

- [Phillips #1 Screwdriver](#) (1)
 - [iFixit Opening Tool](#) (1)
-

Step 1 — Battery



- Lay the device face down to begin.

Step 2



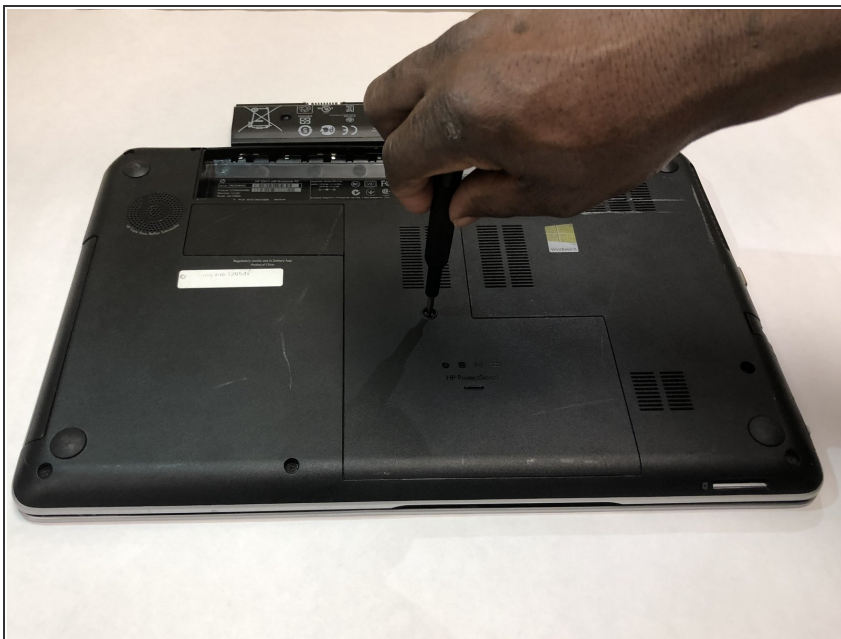
- Slide the release mechanism to the left to release the battery.

Step 3



- Remove the battery.

Step 4 — Back Panel



- Using a Phillips #1 screwdriver, remove the 8.6 mm screw.

Step 5



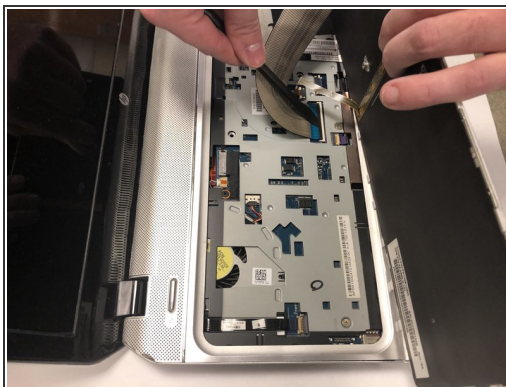
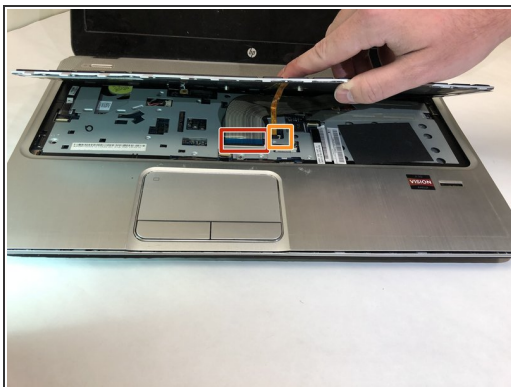
- Slide the center panel down to remove it.

Step 6 — Palm Rest



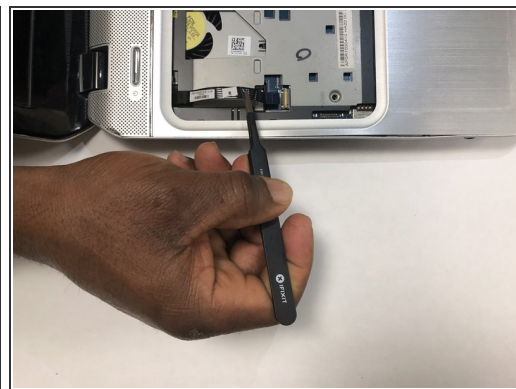
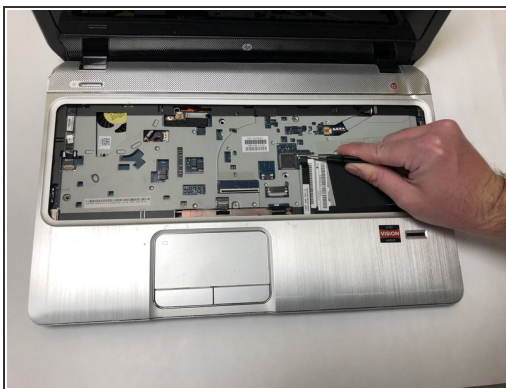
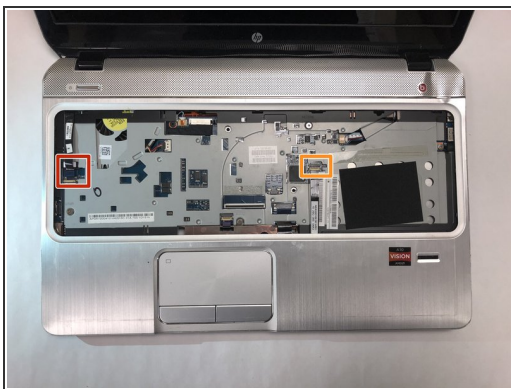
- Set the computer facing upwards again.
- Using the plastic opening tool gently pry the keyboard up.

Step 7



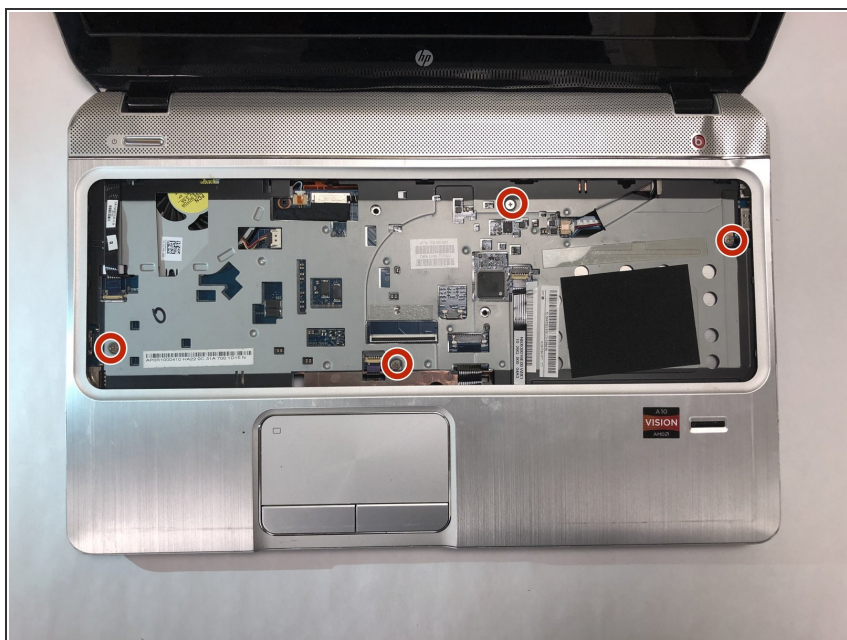
- Flip the white tab on the large ribbon cable upward. Gently pull the large ribbon cable out to remove it.
- Gently pull the small ribbon cable out to remove it.

Step 8



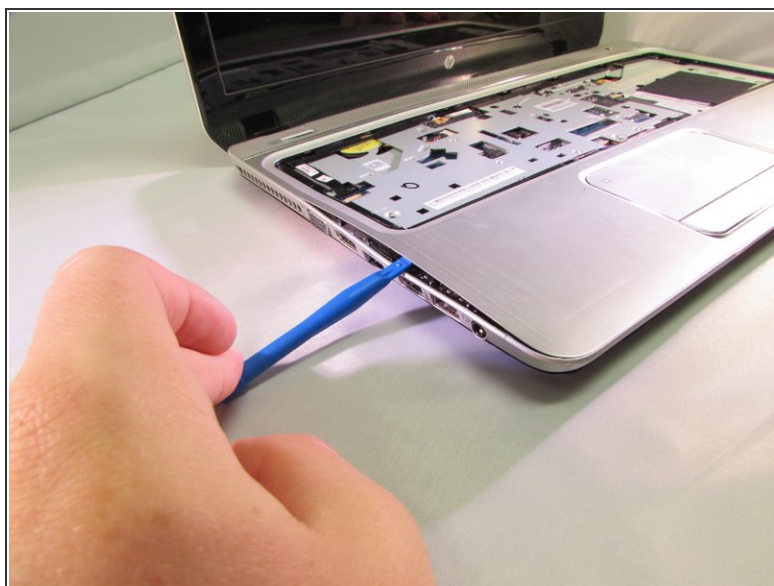
- Gently pull the tension cable to remove it.
- Gently pull the tension cable to remove it.

Step 9



- Using a Phillips #1 screwdriver, remove the four 5.6 mm silver screws.

Step 10



- Use the plastic opening tool to loosen the palm rest from the frame.
- Once you pry all of the snaps up lift off the palm rest.

To reassemble your device, follow these instructions in reverse order.