



HP Pavilion 15-b109wm Hard Drive Replacement

This replacement guide will show how to replace...

Written By: Enrico Miozzo



INTRODUCTION

This replacement guide will show how to replace the hard drive of an HP Pavilion 15-b109wm. This process might be needed in case the laptop has a faulty hard drive. This guide will take between 20-35 minutes, if done correctly. Remember to take your time and do the steps correctly and gently to avoid parts breakage.

For this guide you will need a heavy-duty spudger, a JIS driver set and an iFixtit opening tool. Some parts of this guide require some force to pop open, be careful not to brake or damage any parts when applying force.



TOOLS:

- [Spudger](#) (1)
- [Heavy-Duty Spudger](#) (1)
- [iFixit Opening Tool](#) (1)
- [JIS #1](#) (1)



PARTS:

- [1 TB SSD](#) (1)
- [250 GB SSD](#) (1)
- [Crucial MX500 500 GB SSD](#) (1)
- [2 TB SSD](#) (1)

Step 1 — Battery



- Power off the device and disconnect from any power source.

Step 2



- Turn the device upside down and ensure the back of the device is facing you.

Step 3



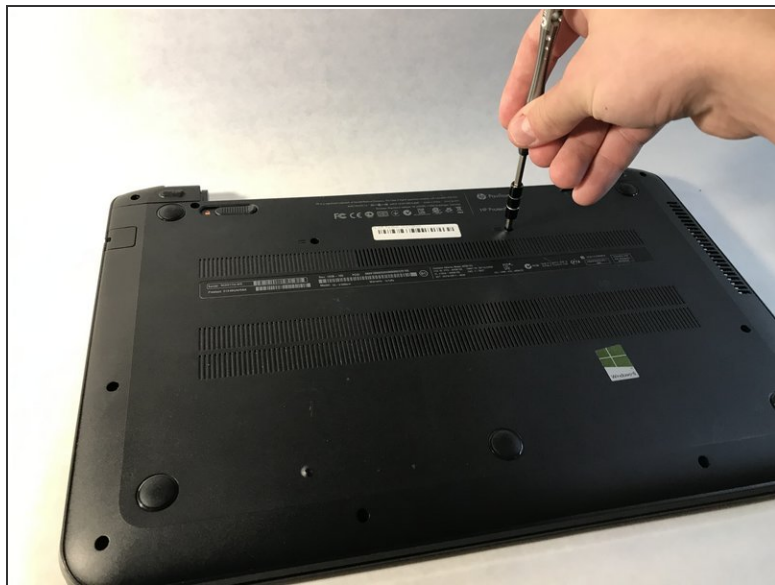
- Push both buttons towards one another simultaneously. The battery slightly pops out.

Step 4



- ⚠ Pull out the battery from the device's battery slot.

Step 5 — Keyboard



- Use JIS #1 screwdriver to remove the eleven 6 mm screws.

Step 6



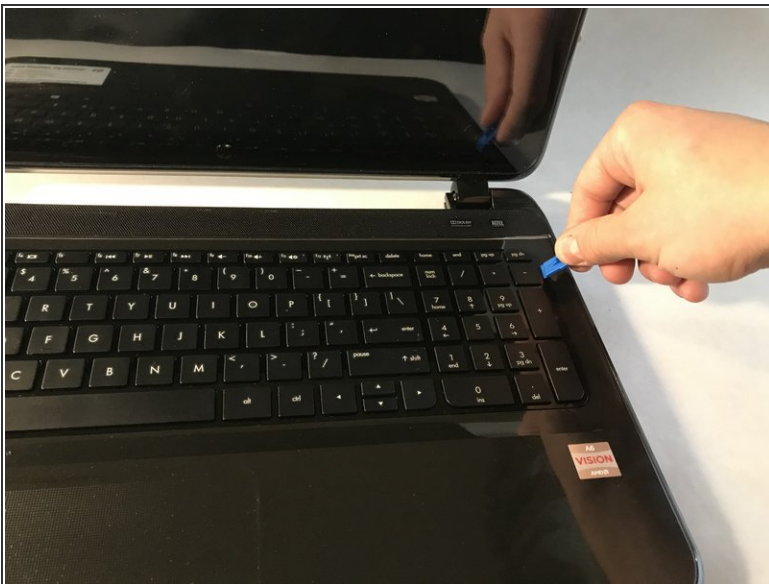
- Locate the two screw holes that allow access to removing the keyboard.
- ⓘ There is a keyboard sign beside both keyboard access holes.

Step 7



- Turn the device onto its side.
- Using a heavy duty spudger, gently disengage the keyboard.

Step 8



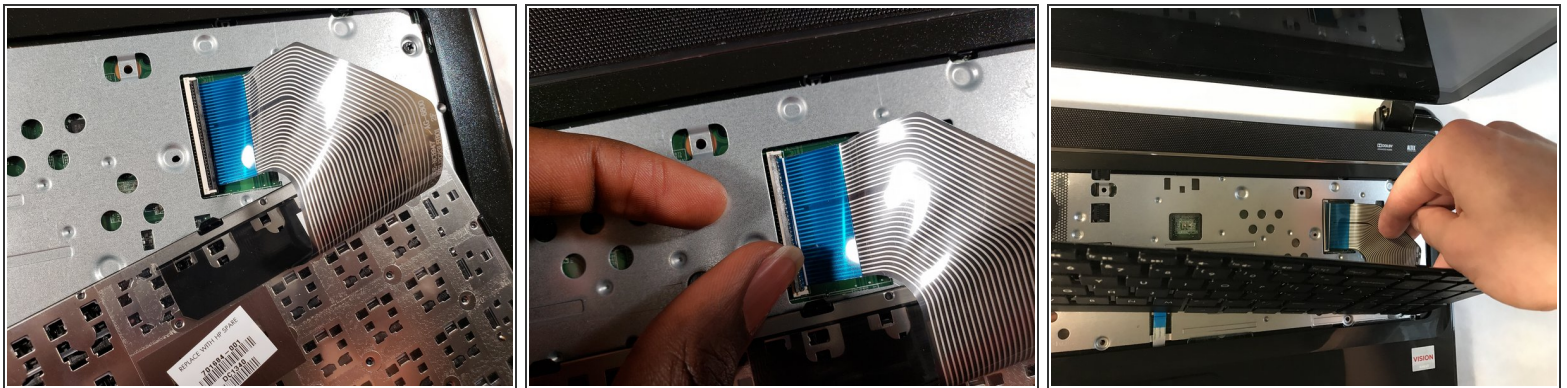
- Using a plastic opening tool, release the keyboard clips.

Step 9



- Tilt the keyboard to expose the *Zero Insertion Force* connector to which the keyboard cable is attached.

Step 10



- Disconnect the keyboard cable from the motherboard by detaching the *Zero Insertion Force* connector.

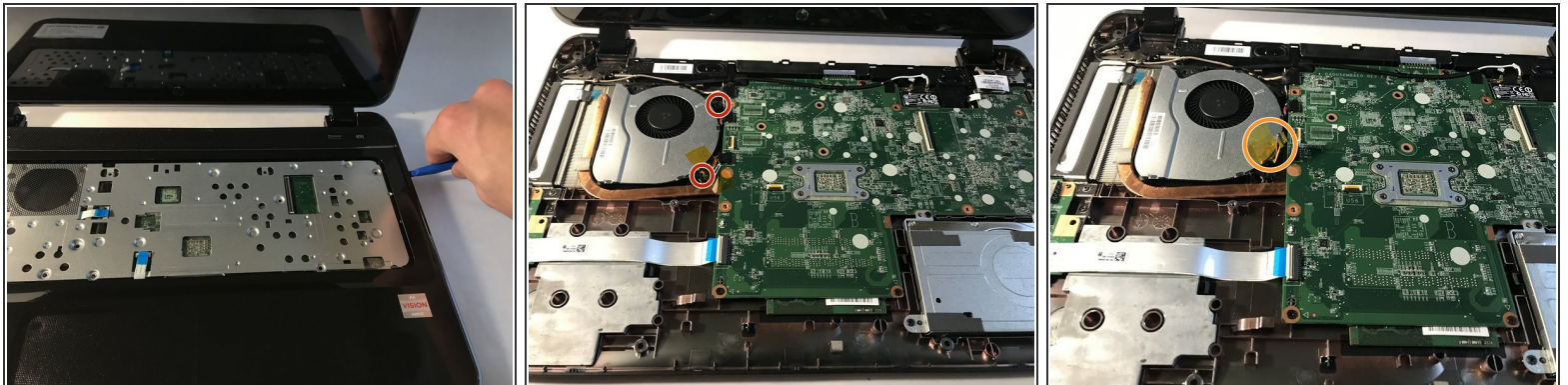
i To detach the connector, release by lifting the black plastic tab up.

Step 11 — Fan



- Using a JIS #1 screwdriver, remove the five 5mm screws.
- Detach the power button cable.
- Detach the touch pad cable.

Step 12



- Using a plastic opening tool, pry open the top cover.
- Unscrew the two 5 mm screws using a JIS #1 screwdriver.
- Gently, pull to detach the fan cable.

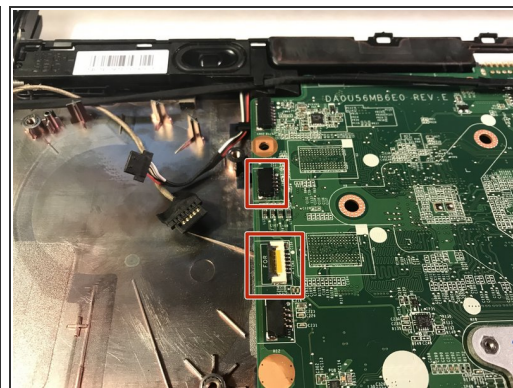
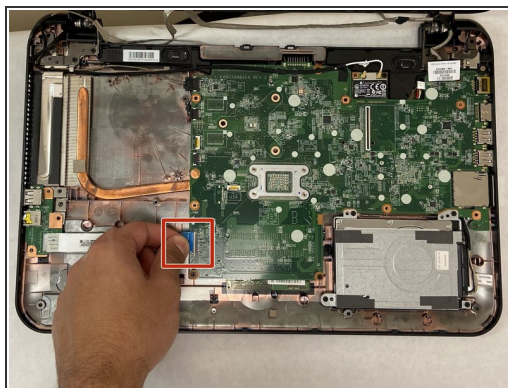
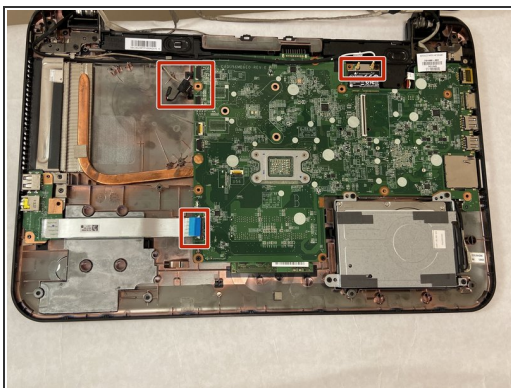
⚠ Be careful so you do not damage the motherboard.

Step 13



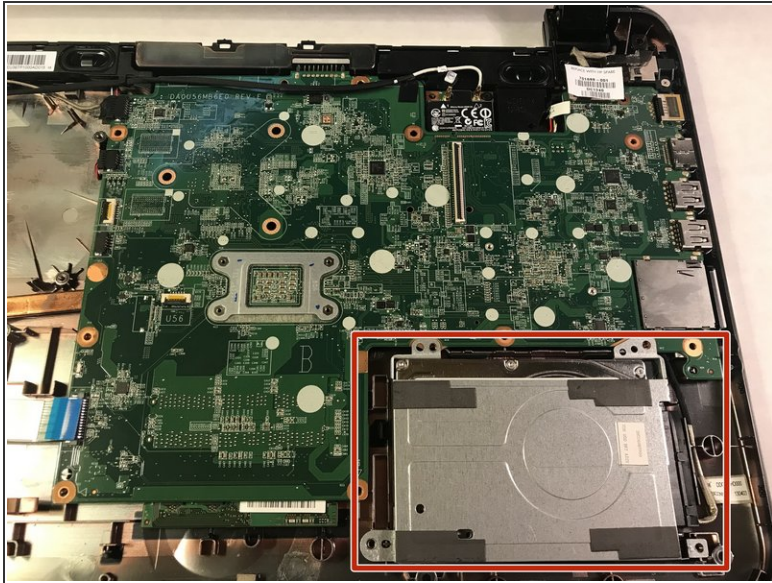
- Carefully remove the fan from its slot.

Step 14 — Hard Drive



- Disconnect the cables to the motherboard.

Step 15



- Remove the hard drive.

To reassemble your device, follow the instructions in reverse order.