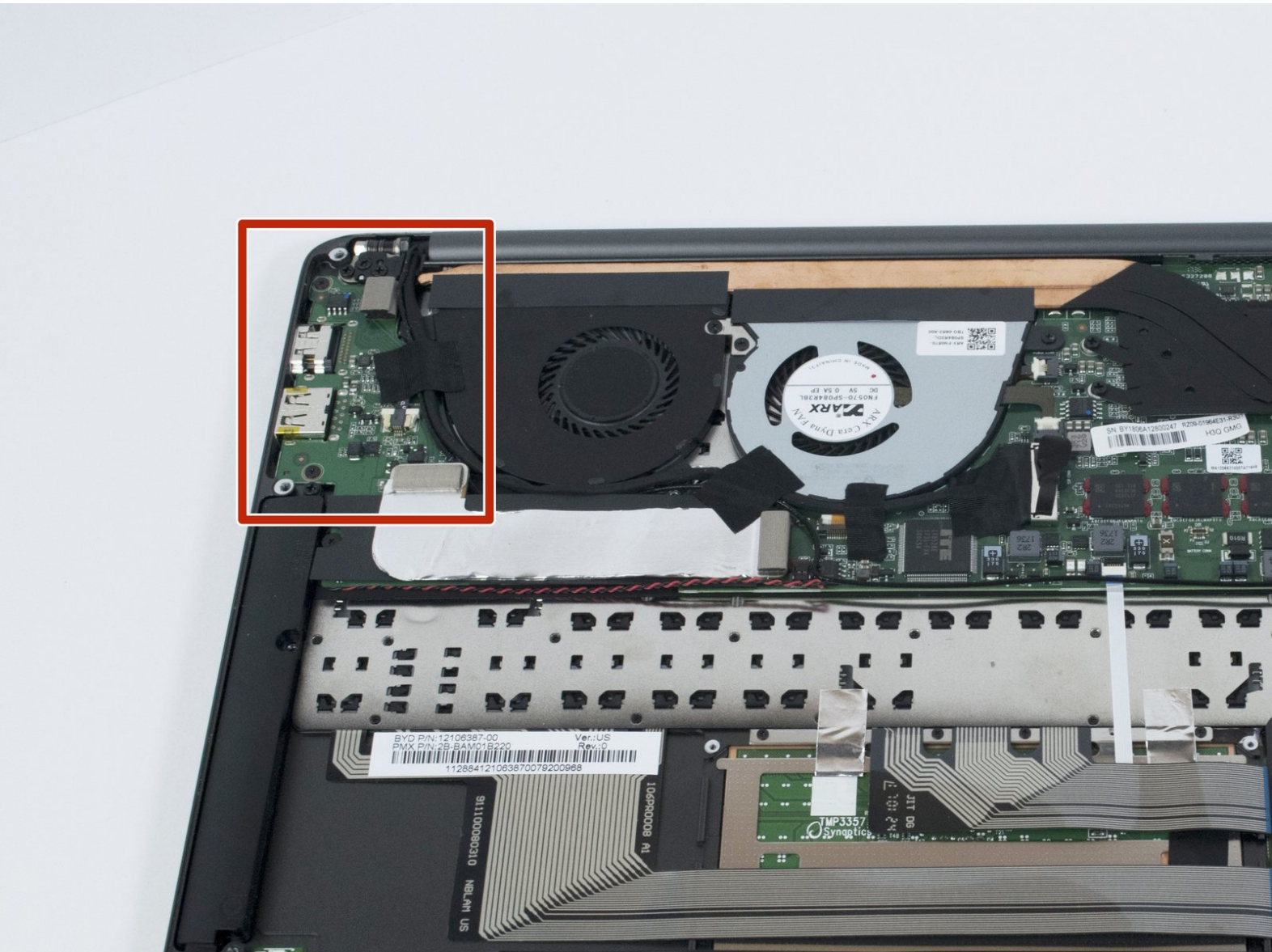




Razer Blade Stealth 2017 HDMI and USB-A Port Replacement

This guide outlines how to replace the HDMI and USB-A module in the Razer Blade Stealth 2017.

Written By: Helene Willits



INTRODUCTION

This guide outlines how to replace the HDMI and USB-A port module in the Razer Blade Stealth 2017. When an external device is connected to the HDMI port, if the external device is not displaying audio or visual feed, the HDMI may be broken. The HDMI and USB-A module is located on the right-hand side of the computer, and often experience issues with loose ports and external device communication. Some tools are required for this replacement.



TOOLS:

- [T5 Torx Screwdriver](#) (1)
 - [Small Plastic Spudger](#) (1)
 - [Tweezers](#) (1)
 - [Phillips #00 Screwdriver](#) (1)
-

Step 1 — Battery



- ⓘ Before you begin, be sure to turn off your laptop and discharge the battery down to 25%.
- Use a Torx T5 screwdriver to remove the eight, 3mm screws on the bottom cover of the laptop.
- ⓘ Whenever you remove screws from the device, remember to save and label them.

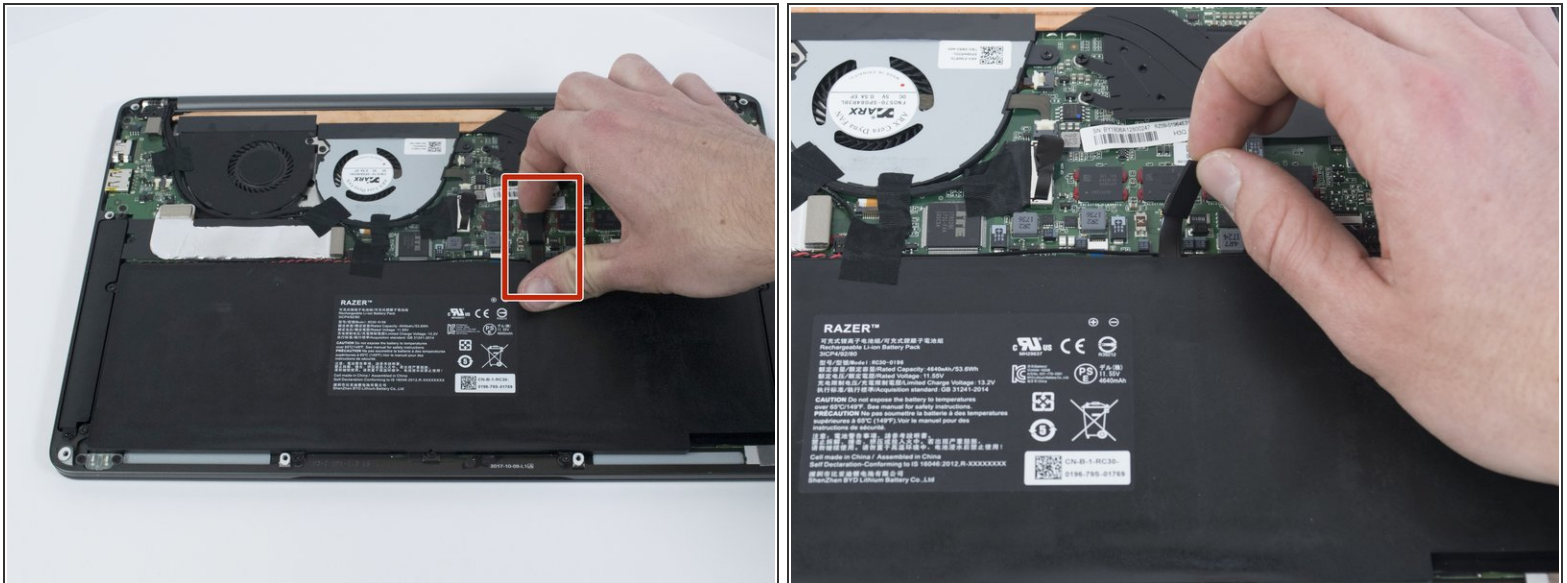
Step 2



- Remove the bottom cover of the laptop by sliding it away from the hinge.

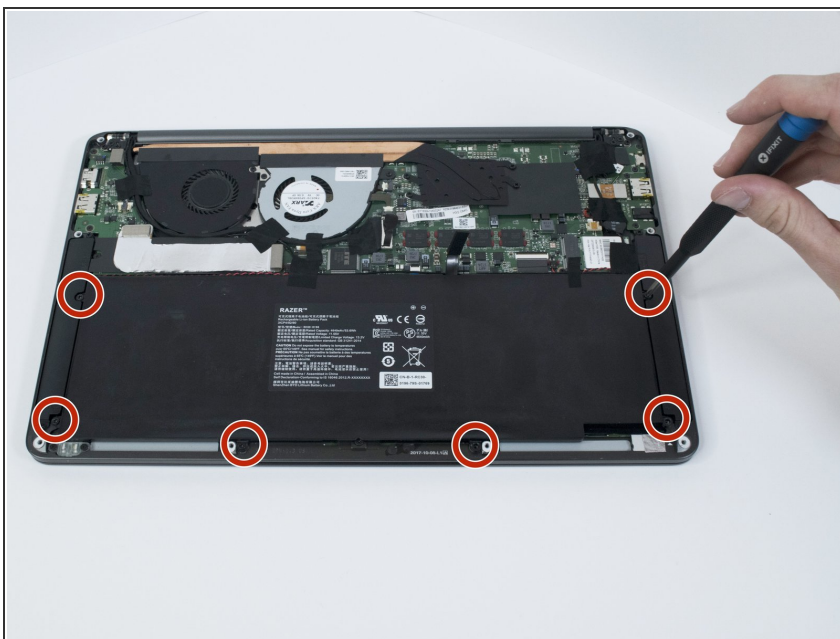
⚠ Do not force the cover up!

Step 3



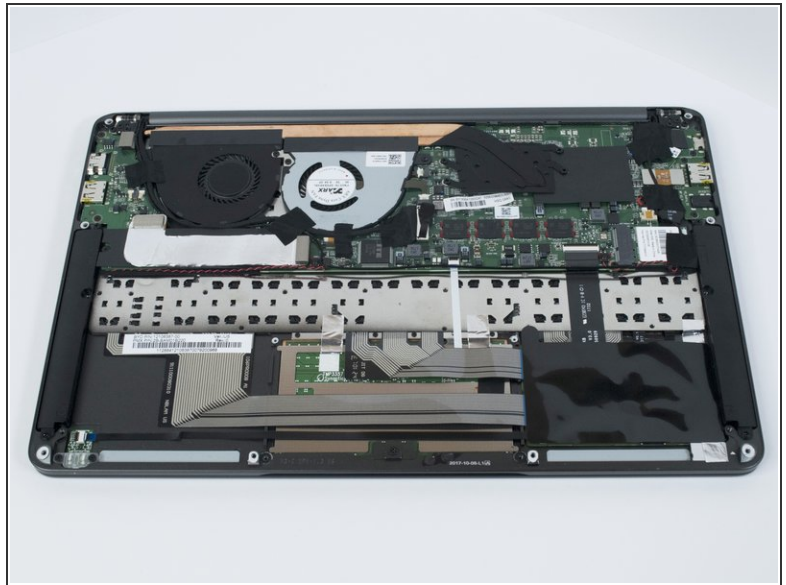
- Use your fingernail to pry up and disconnect the battery from the motherboard.

Step 4



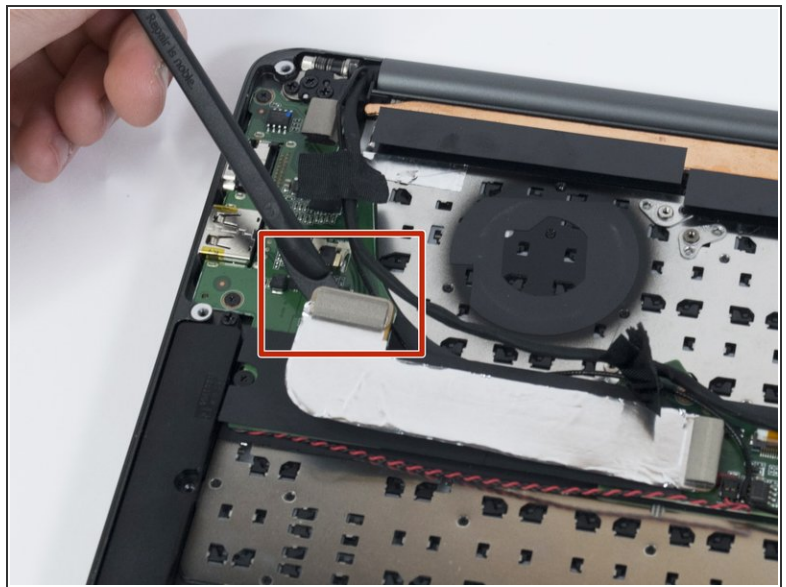
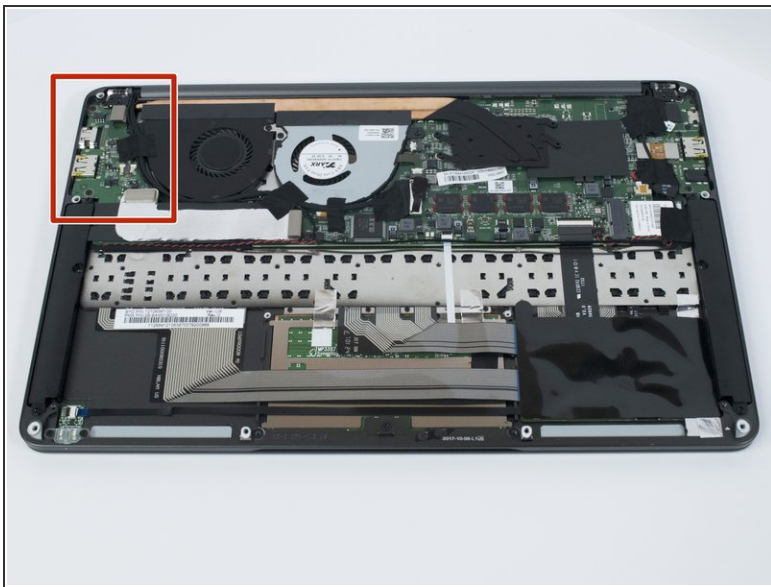
- Use a Phillips #00 screwdriver to remove the six, 5mm screws securing the battery.

Step 5



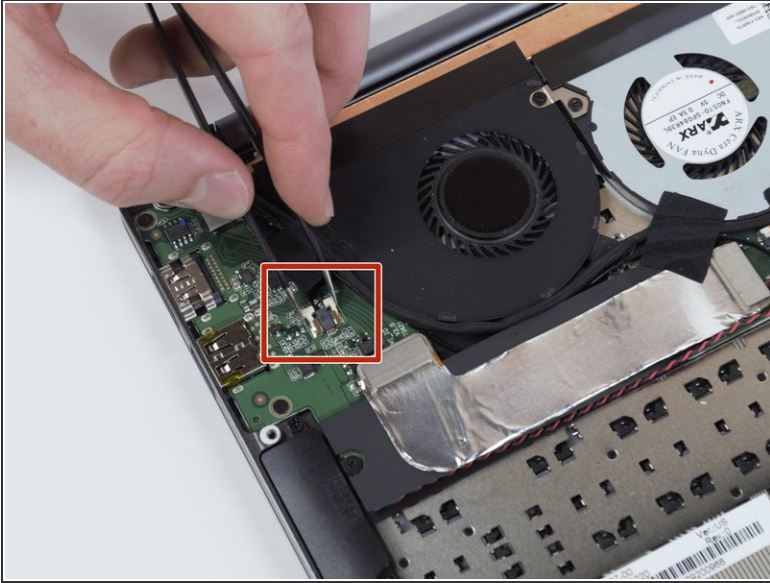
- ⓘ Remove any tape attached to the battery.
- Use the plastic spudger to pry out the battery.

Step 6 — HDMI and USB-A Port



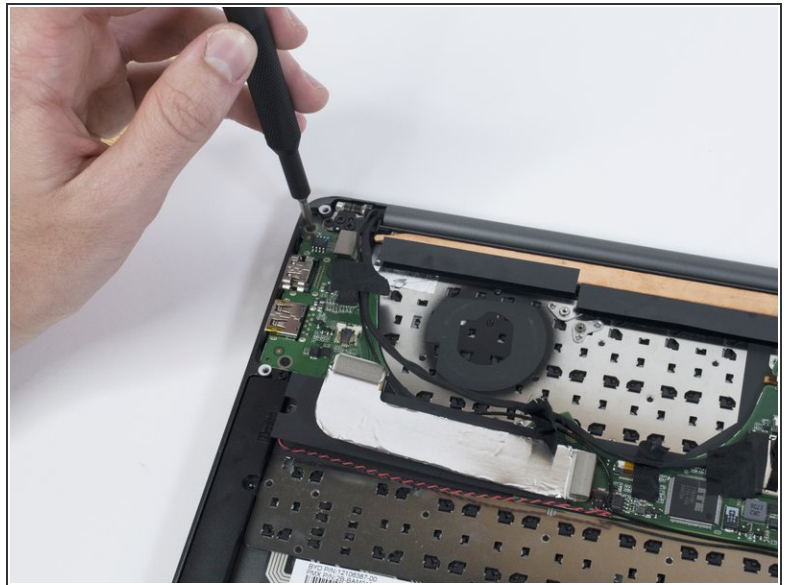
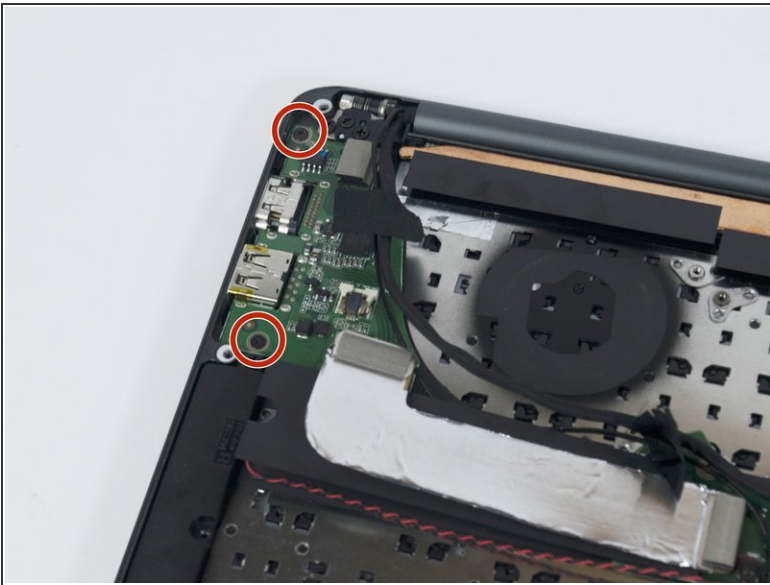
- Use a plastic spudger to lift up the press-fit interconnect cable and expose the USB-A and HDMI port module.

Step 7



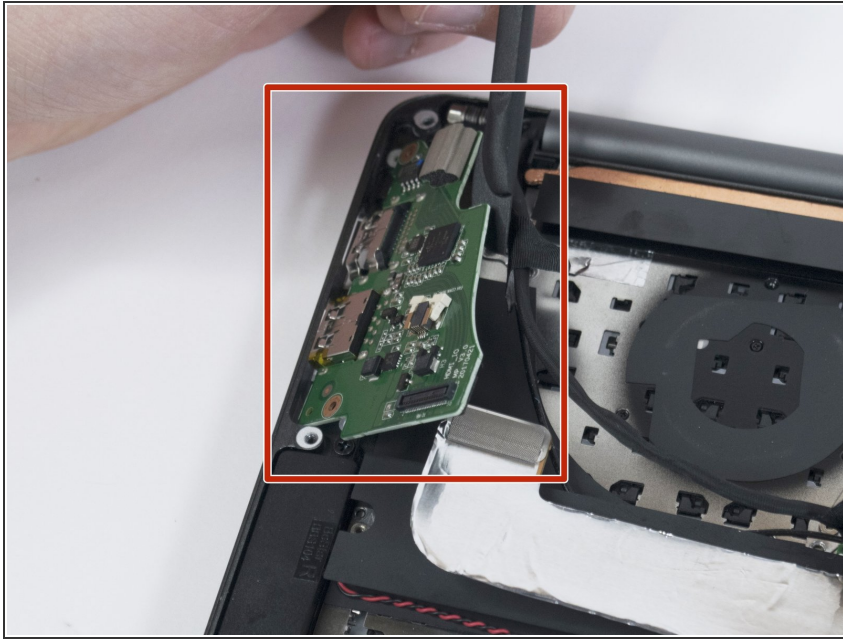
- Use tweezers to squeeze the fan's white header.
- Disconnect the fan connector by sliding it out toward the rear of the chassis.

Step 8



- Use a Phillips #00 screwdriver to remove the two, 3mm screws from the USB-A and HDMI port module.

Step 9



- Use a plastic spudger to remove the USB-A and HDMI port module from the case.

⚠ Do not damage the interconnect cable during removal!

To reassemble your device, follow these instructions in reverse order.