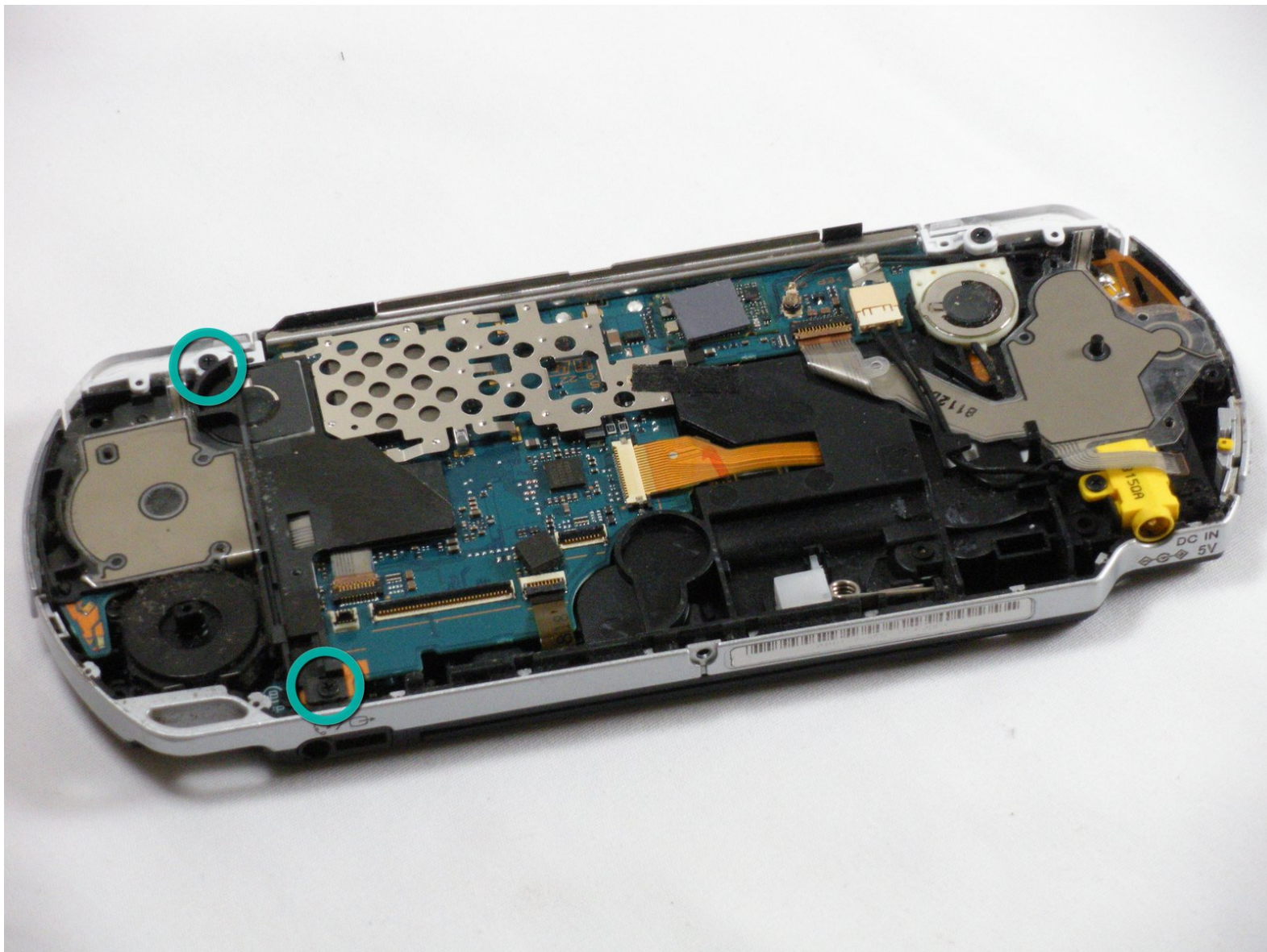




# PSP 2000 Memory Stick Slot Replacement

Written By: espinks



---

# INTRODUCTION

Is your Memory Slot just not performing as well as it used to? Fix it!

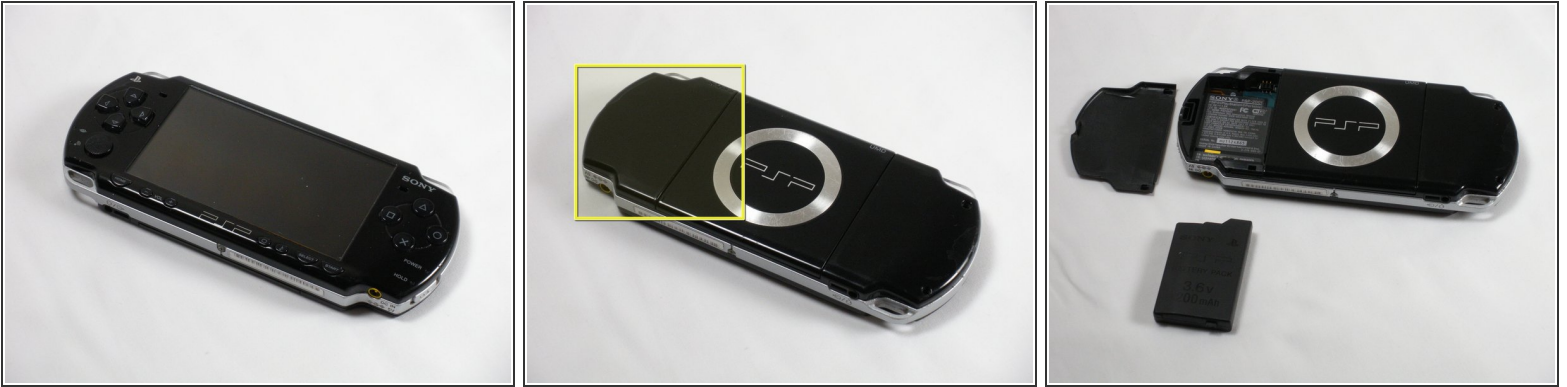
---



## TOOLS:

- [iFixit Opening Tool](#) (1)
  - [Phillips #00 Screwdriver](#) (1)
-

## Step 1 — Battery



- Place PSP face down, so that the UMD Drive is facing upwards.
- Locate the battery door and open.
- Remove the battery from inside.

## Step 2 — Front Casing

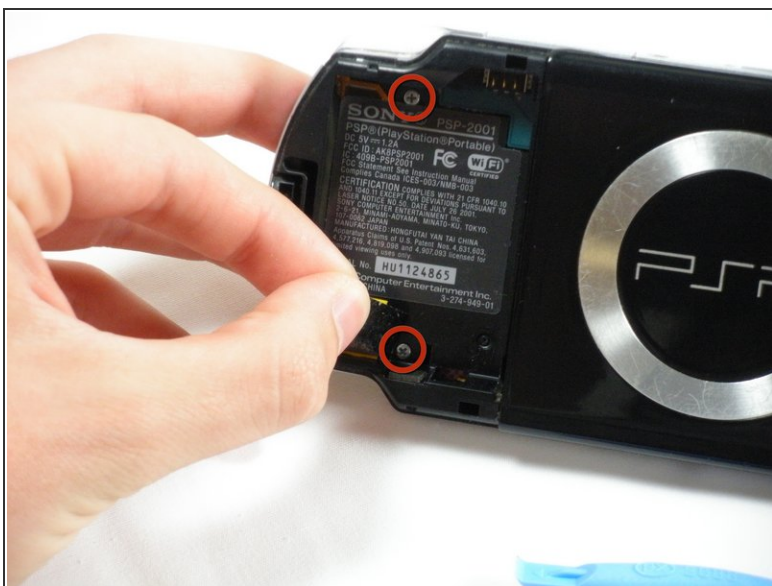


**⚠ This step requires the removal of the warranty sticker. Removing the sticker will void the warranty. According to the FTC removing this will not void your warranty.**

- Locate the sticker in the battery compartment labeled: *"En: Warranty Void if Seal Damaged."*
- Remove the sticker using the PSP Opening Tools.
- ⓘ Under the sticker is a 5mm Phillips screw needed in the next step.



## Step 3



- Remove four 5 mm Phillips from the case.

**i** If the screws stick in the case, you can use a magnetized screwdriver to draw them out.

## Step 4



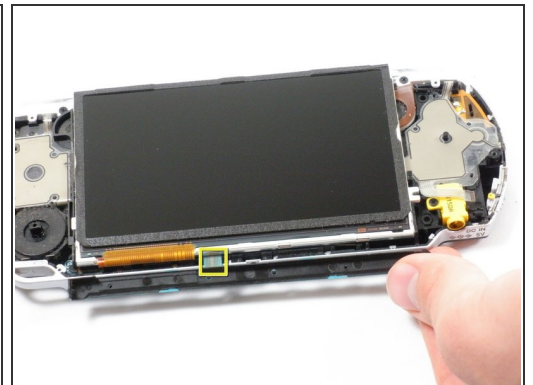
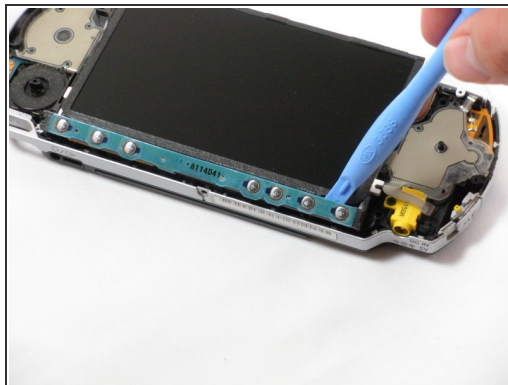
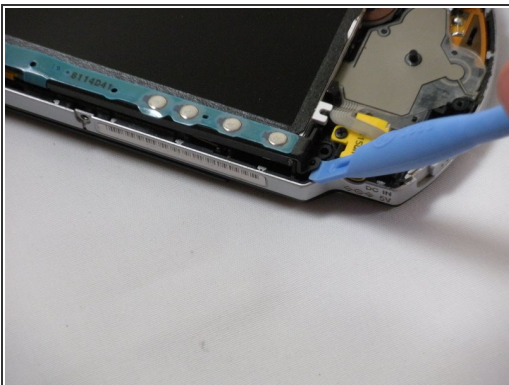
- Remove the following screws from around the bezel:
  - Two 4 mm Phillips
  - One 5 mm Phillips
- ☑ The two shorter 4 mm screws are on the top of the PSP; the longer 5 mm screw is on the bottom.

## Step 5



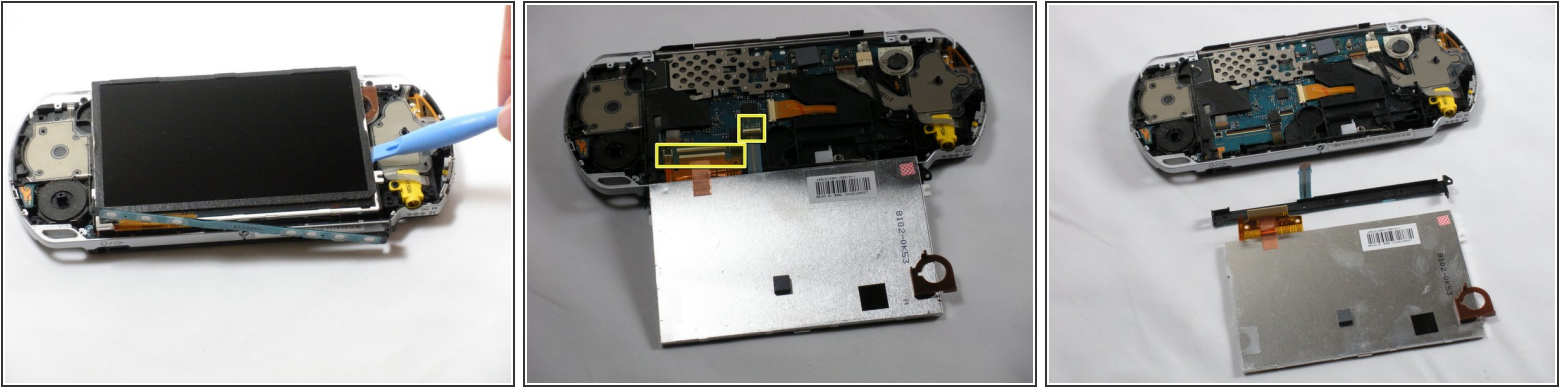
- Gently pry the front bezel away from the casing using a PSP opening tool.
- Start on the right hand side of the PSP bezel, and carefully work the tool around the side.
- ⓘ If you want to clean the control buttons or D-pad, you can easily pop them out once the faceplate is off and wipe them clean.

## Step 6 — Display



- Remove the home bar by gently prying on the left and right sides of it with the opening tools. Lift the bar out of the device.
- ⚠ A ribbon cable connects the home bar to the logic board. Be careful not to damage the cable when removing the bar.

## Step 7



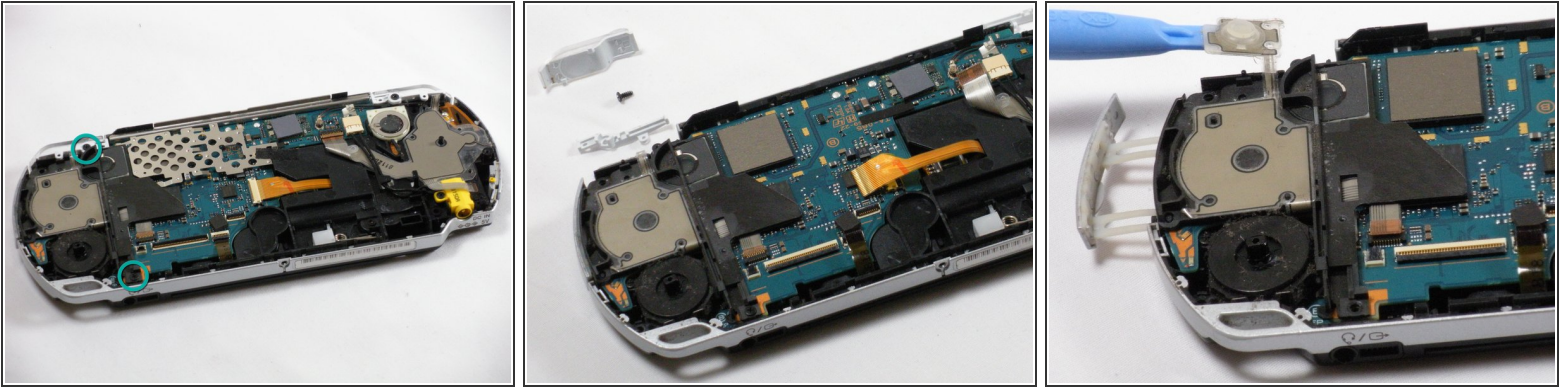
- With the home bar out of the way, gently pry up the display using the opening tools.

**⚠ There is another ribbon cable attached to the bottom of the LCD. Be careful not to damage either of the connectors when removing.**

- Lift the black tabs of the ribbon cable connectors using a opening tool. Pull the ribbons out towards the bottom of the PSP to disconnect.
- Gently lift out the display.

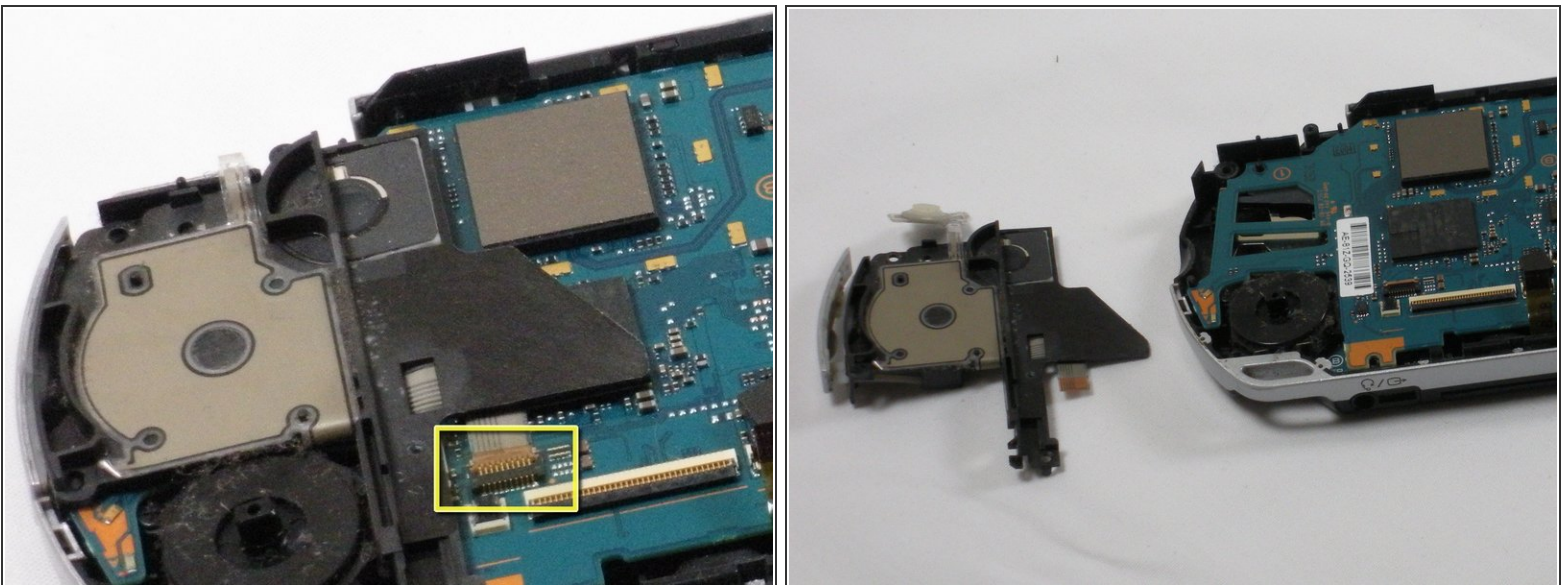


## Step 8 — Memory Stick Slot



- Remove two 4.5 mm Phillips screws from the left-hand side of the PSP.
  - Slide off the left trigger along with the plastic bracket underneath.
  - Carefully pry off left trigger button using opening tools.
- i** The button is adhered to the body. It can be re-adhered with hot glue after being pried-up, if necessary.

## Step 9



- Use an opening tool to lift up the brown tab on the connector and remove the cable horizontally.
- Gently remove the memory card slot by pulling it straight out.



To reassemble your device, follow these instructions in reverse order.