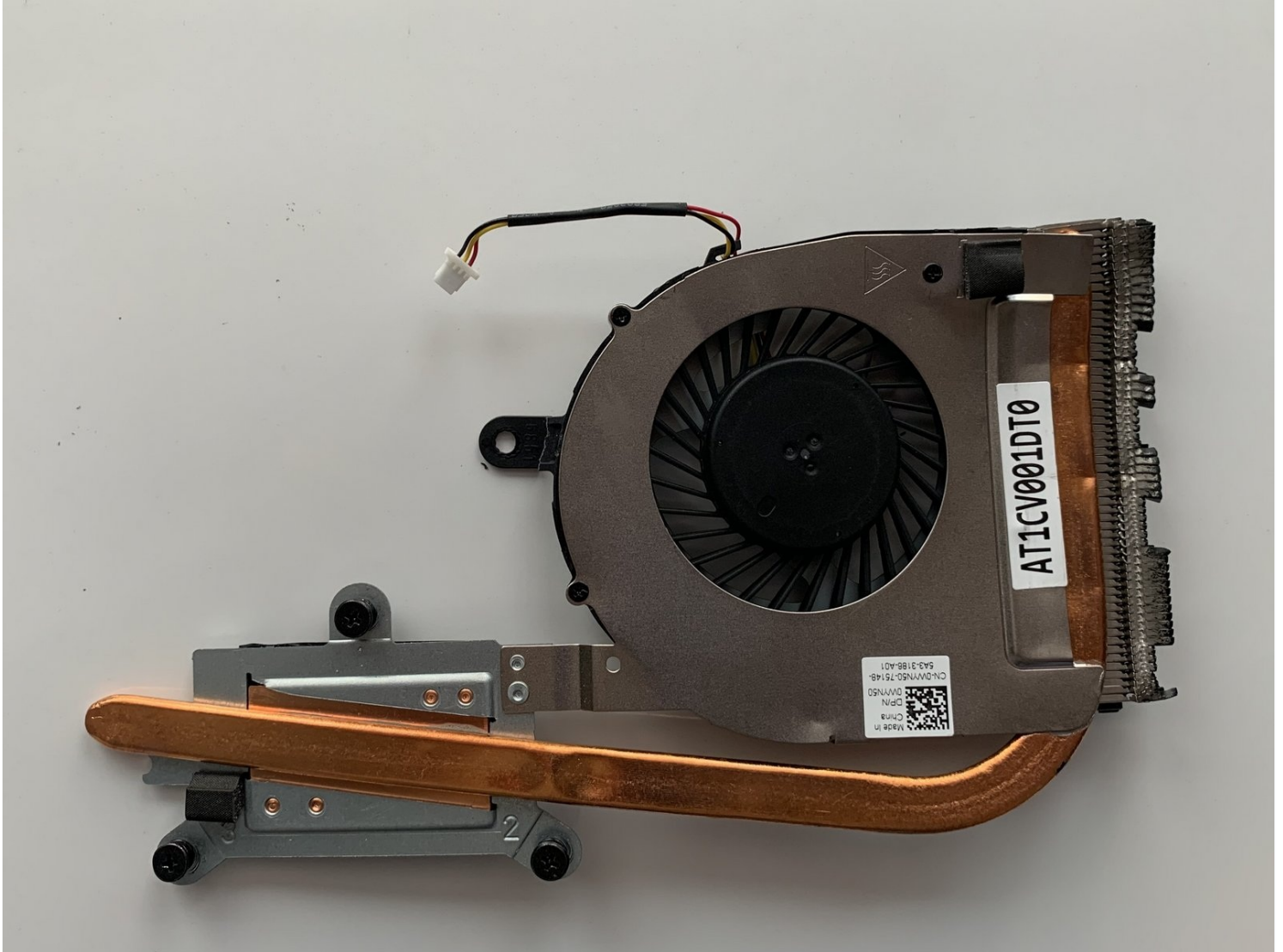




Dell Inspiron 5555 Fan Replacement

If your Dell Inspiron 5555 fan is...

Written By: Andrew Smith



INTRODUCTION

If your Dell Inspiron 5555 fan is malfunctioning or is constantly on high speeds, you may need to replace it. This guide will give you specific instructions on how to achieve this task.

The fan's main purpose is to cool the device when the laptop is in use to prevent overheating.

Before using this guide allow the laptop to completely cool and make sure all vents are clear of possible dust or dirt. Long periods of use and built up debris can cause the fan to operate improperly.

Before beginning the guide, make sure the laptop is powered off and that it is not connected to an external power source.

TOOLS:

[Spudger](#) (1)

[Phillips #0 Screwdriver](#) (1)

[iFixit Opening Tool](#) (1)

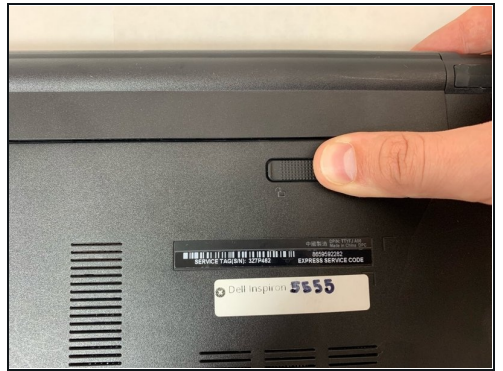
[Halberd Spudger](#) (1)

Step 1 — Battery



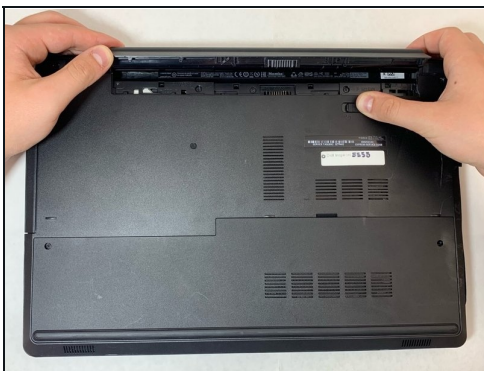
- Close the laptop and lay it flat, logo side down.
- Make sure that the battery is visible and at the top of the device.

Step 2



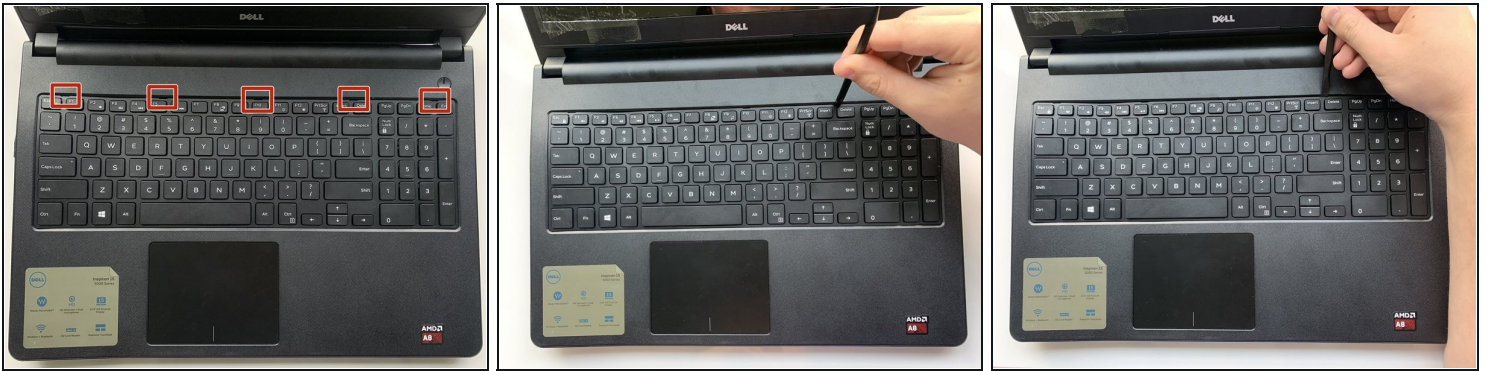
- Push the lock switch to the left to pop out the battery.

Step 3



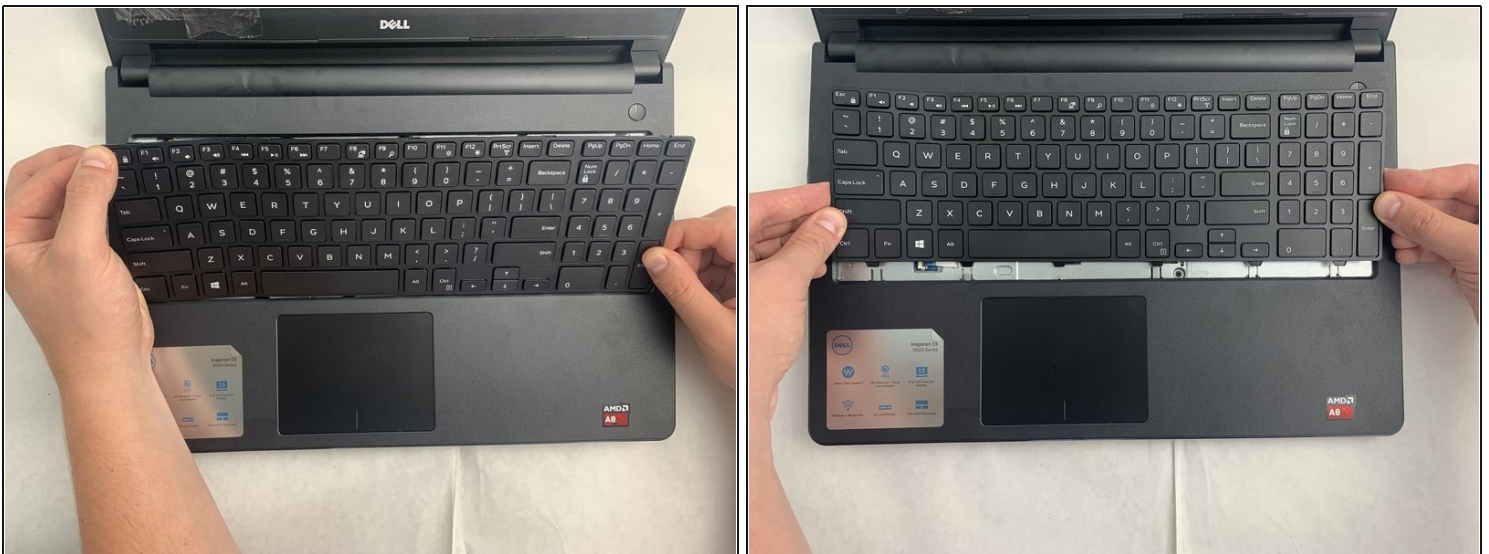
- When the battery pops out, lift it so that it comes out completely.

Step 4 — Keyboard



- Turn the laptop over and open the device.
- Insert the flat end of the spudger into the five notches located at the top of the keyboard and pry the keyboard up by pushing down and up.

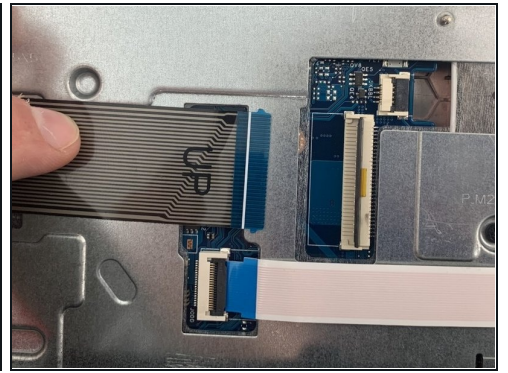
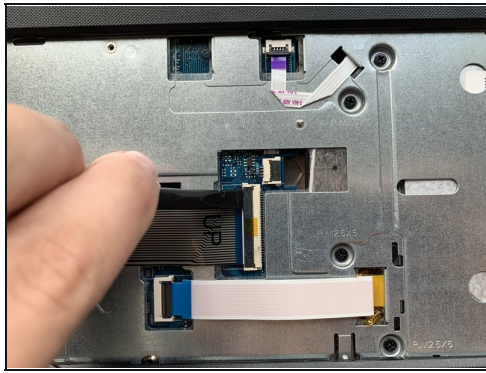
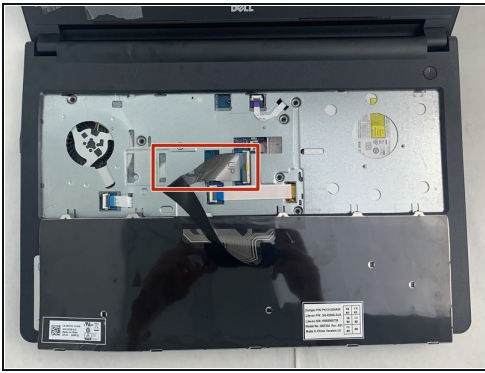
Step 5



- Lift up and slide back to release the six notches from the bottom of the keyboard.

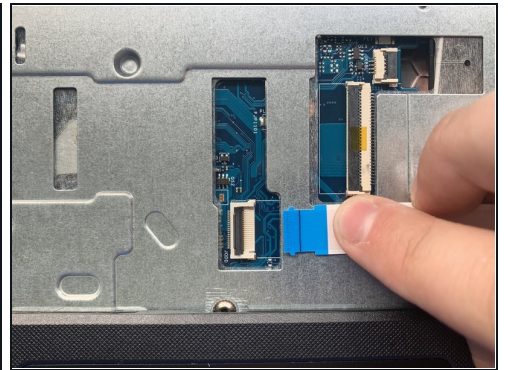
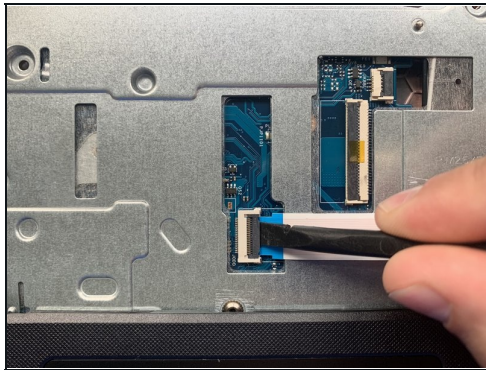
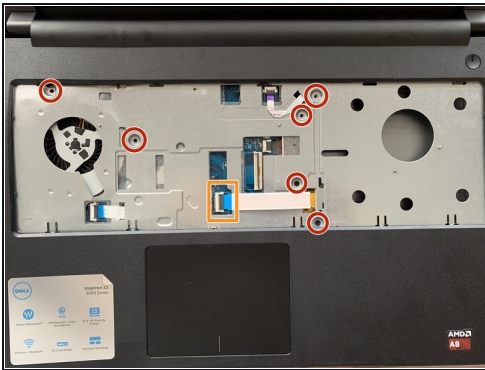
⚠ Be careful not to lift the keyboard up all the way because it is still connected to the laptop by a cable on the bottom.

Step 6



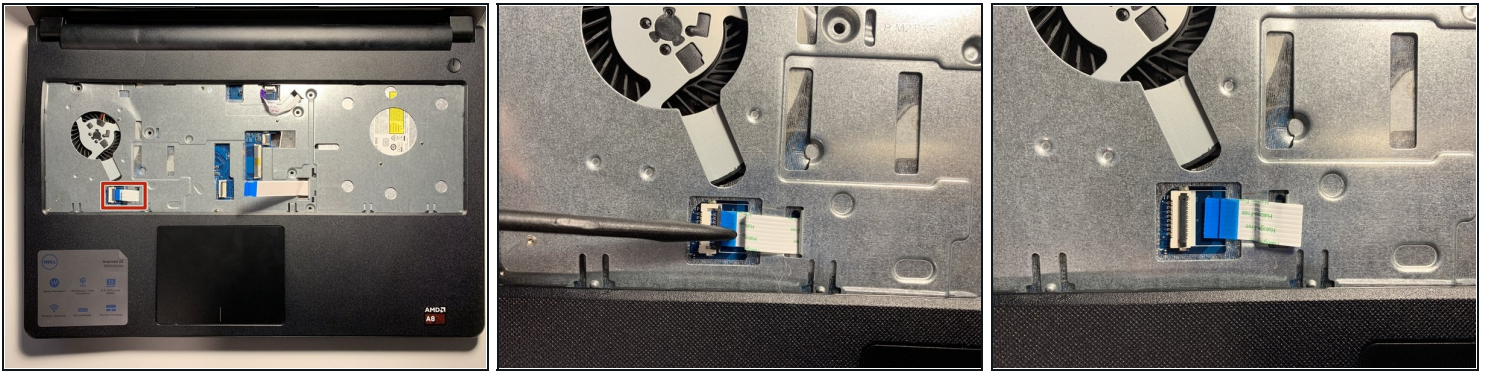
- Flip the keyboard upside down to access the keyboard cable.
- Using the flat end of the spudger, flip the black tab securing the keyboard cable up to remove the keyboard cable.
- Remove the keyboard by lifting it off of the laptop.

Step 7 — Fan



- Remove the six 5 mm screws using the Phillips #0 screwdriver.
- Use the spudger to lift the black tab of the ZIF connector, removing the optical drive cable.

Step 8



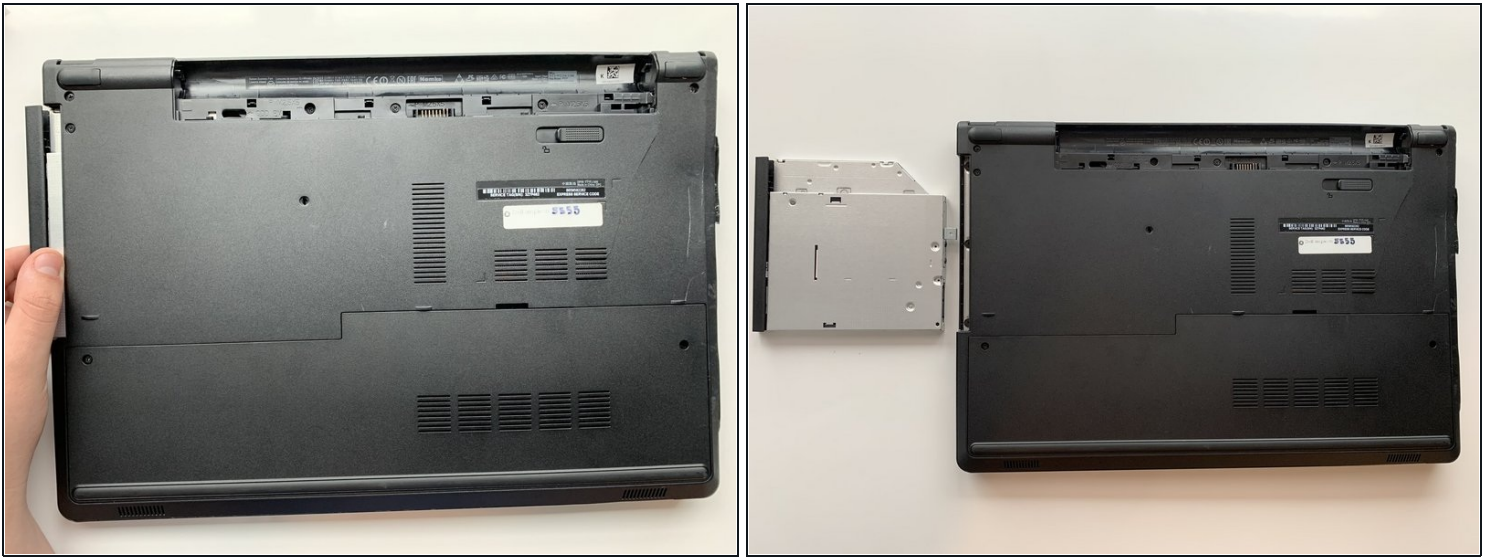
- Using the hooked end of the Halberd Spudger, pull the black tab to the left to expose the touchpad cable.
- Close the laptop and flip it over, so the bottom is facing up.

Step 9



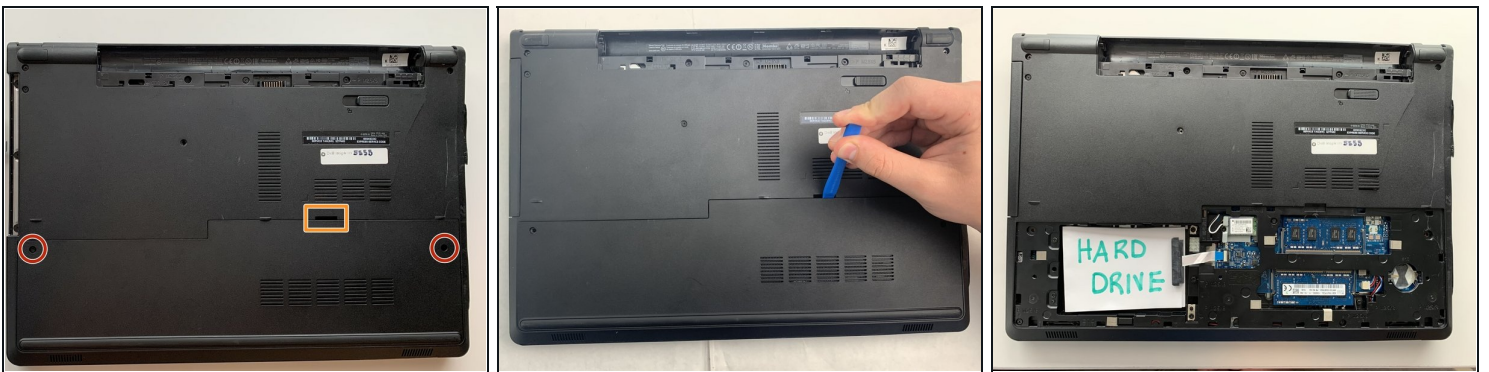
- Remove the 5 mm screw using the Phillips #0 Screwdriver.
- Use the flat end of the spudger to slide the optical drive out to the left at the screwdriver push point.

Step 10



- Pull the optical drive horizontally to the left to remove it from the laptop.

Step 11



- Remove the two 8 mm screws with the Phillips #0 Screwdriver.
- Use the iFixit opening tool to pry open the access door by pushing down and up at the notch on the top of the access door, running it along the edges.

Step 12



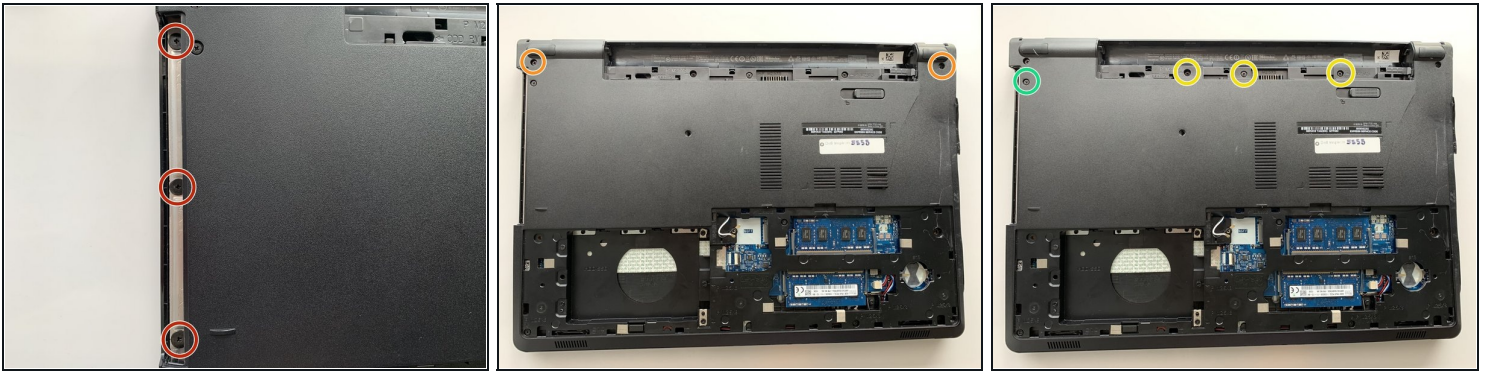
- Use the flat end of the spudger to lift the white tab up that holds the hard drive cable in place.
- Remove the four 8 mm screws with the Phillips #0 screwdriver.
- Lift the hard drive from the laptop.

Step 13



- Remove the 3 mm screw on the wireless card with a Phillips #0 screwdriver.
- Lift the metal bracket to remove.
- Detach the antenna cables at the gold metal end by carefully pulling them up from the Wireless WLAN Card.
- Lift the Wireless WLAN Card from the device.

Step 14



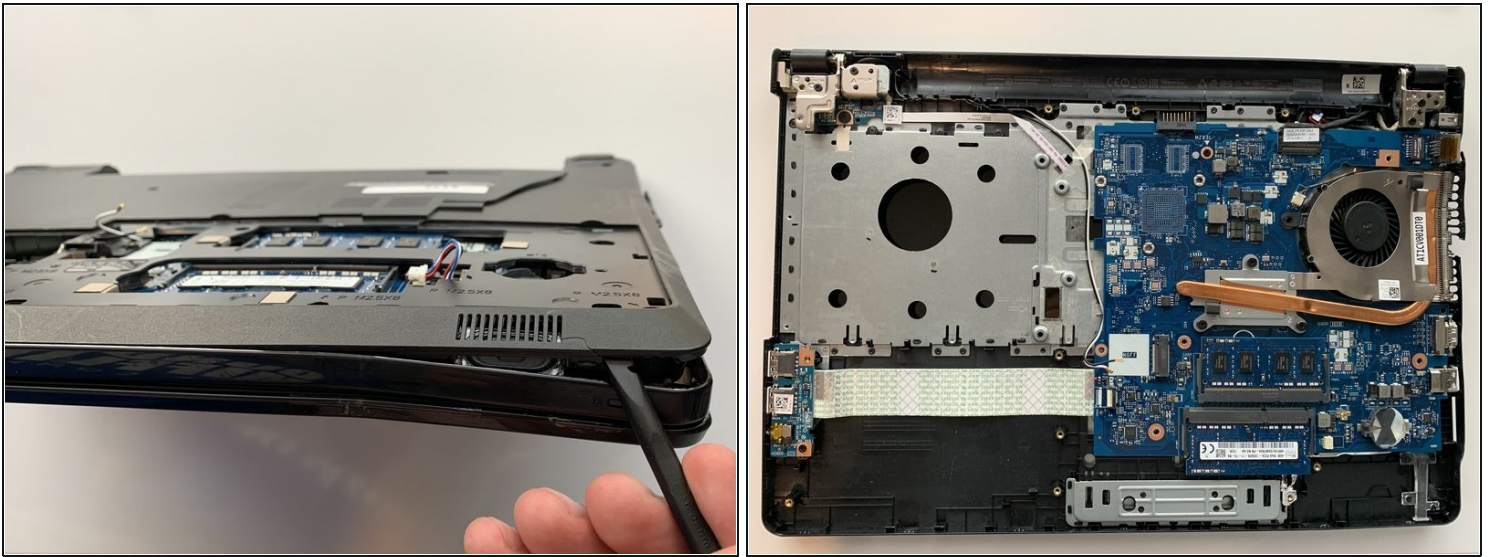
- Remove the three 2 mm wafer screws in the optical drive port with the Phillips #0 screwdriver.
- Remove the two 8 mm hinge screws with the Phillips #0 screwdriver.
- Remove the three 5 mm screws from the battery opening with the Phillips #0 screwdriver.
- Remove the 5 mm screw with the Phillips #0 screwdriver.

Step 15



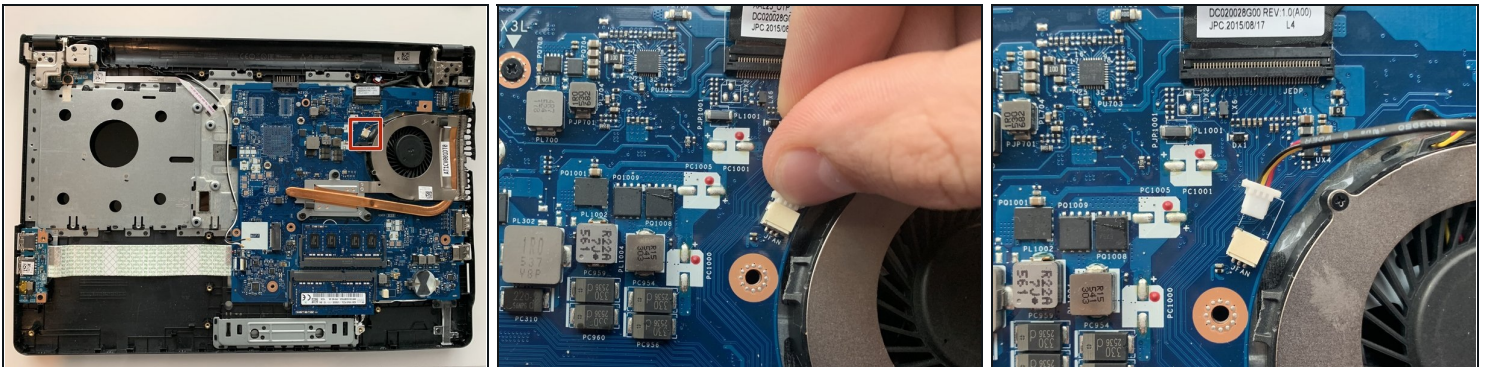
- Remove the six 8 mm screws under the access door using the Phillips #0 Screwdriver.
 - Disconnect the speaker connection by using your fingers and carefully pulling it to the right.
- ⓘ It may be snug in the connector, so gradually use more force until the speaker connection disconnects.

Step 16



- Using the flat end of the spudger, pry the bottom base off of the laptop by the crack around the perimeter of the laptop and running the spudger around the edges.

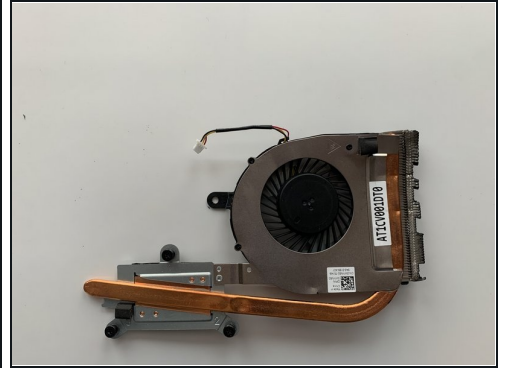
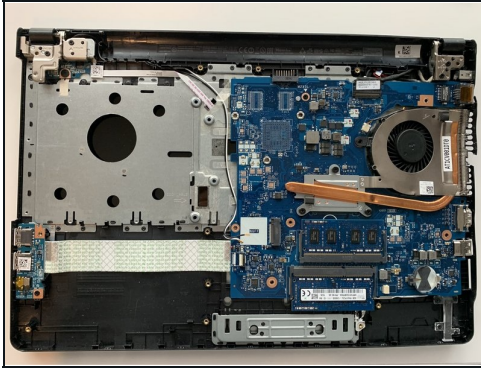
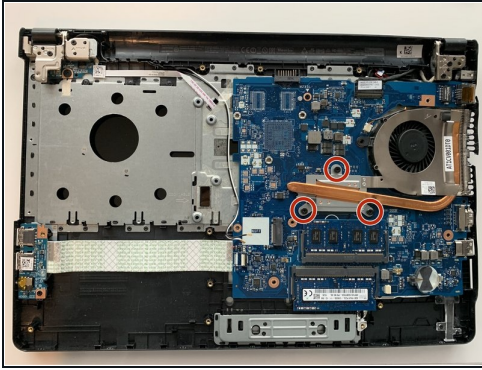
Step 17



- Using your fingers gently pull the fan cable out of its port.

⚠ Avoid pulling the fan cable out by the actual wire. Instead pull on the plastic white piece that is attached to the wire.

Step 18



- Loosen the three captive screws attached to the metal bracket of the fan using the Phillips #0 Screwdriver.
- ⓘ The screws should remain attached to the metal bracket by springs.
- Carefully lift the fan out of the laptop.

To reassemble your device, follow these instructions in reverse order.