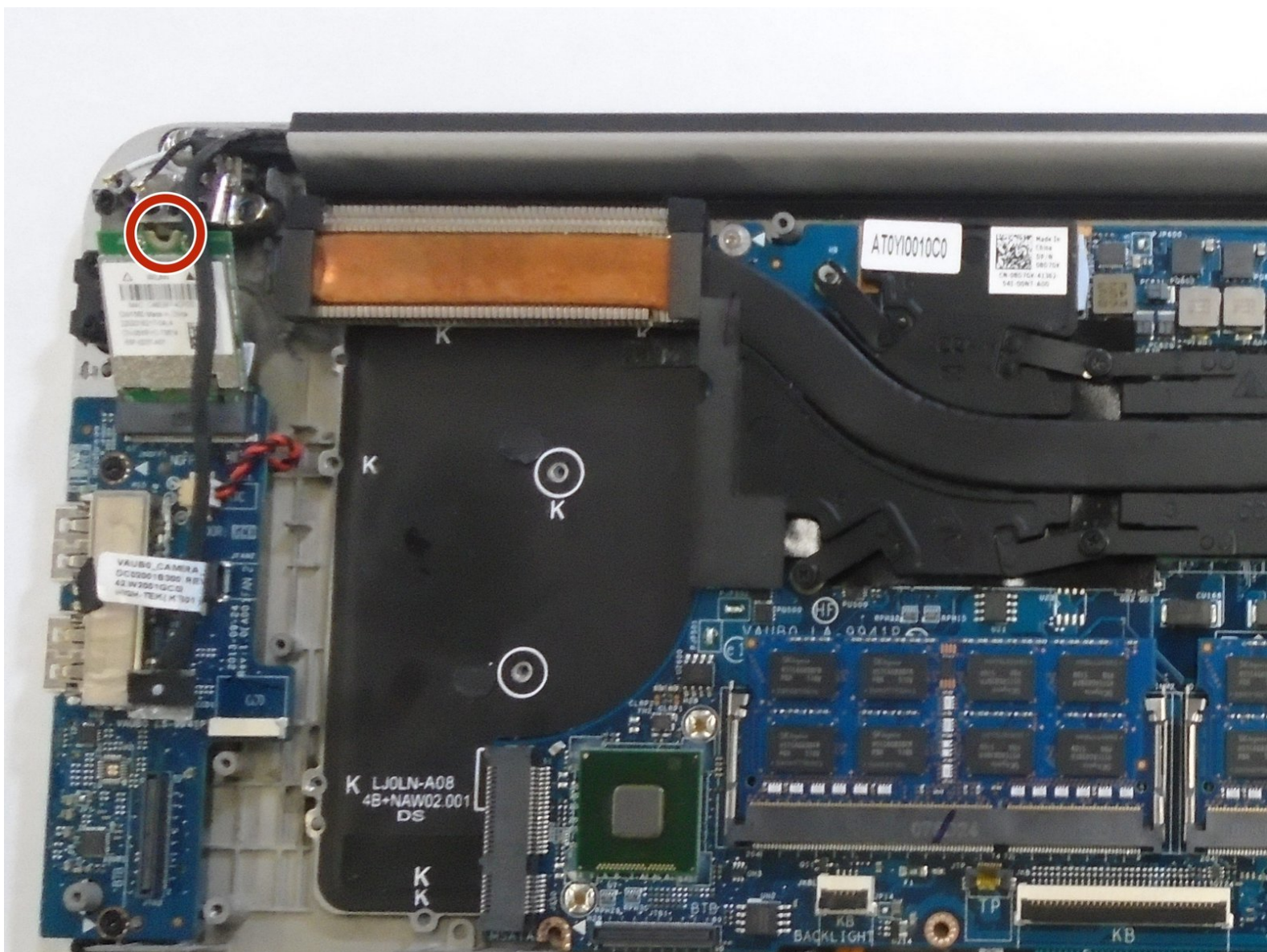




Dell XPS 15 9530 WiFi Card Replacement

This guide serves to walk users through the removal of the WiFi Card for the Dell XPS 15 9530 laptop

Written By: Matt



INTRODUCTION

The much complained-about Killer BCM4352 WiFi card that plagues this laptop is thankfully easy to replace. The E-key M.2 slot on the motherboard should take almost any modern WiFi card, provided it uses PCIe (like the AX200) and not CNVi (like the AX201).



TOOLS:

- [T5 Torx Screwdriver](#) (1)
 - [Phillips #0 Screwdriver](#) (1)
-

Step 1 — Base Cover



- Using a T5 Torx screwdriver, remove ten 3mm screws.

Step 2



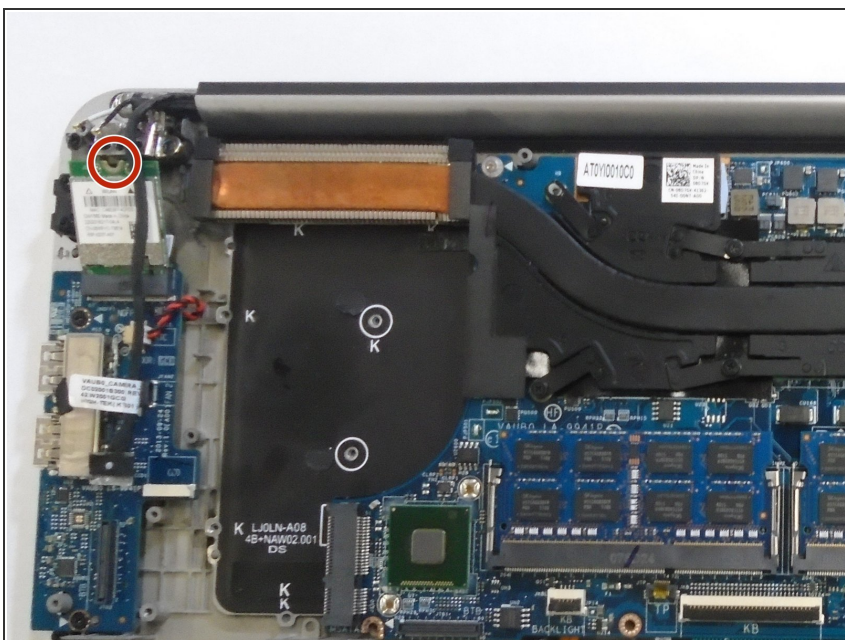
- Lift the plastic tab.
- Remove two 3mm Phillips #0 screws under the plastic tab.

Step 3



- Lift the lower case off.

Step 4 — WiFi Card



- Use a Phillips #0 screwdriver to remove the screw holding the WiFi card down. Be careful not to lose the

metal retainer holding the antenna cables down.

- Without applying too much force, pop out the antenna cables and remove the card.
- Insert the new card, and reattach the antenna cables. The black cable connects to the main antenna slot (marked with a solid triangle) and the white connects to the auxiliary (marked with an empty triangle).

To reassemble your device, follow these instructions in reverse order.