



Modal MD-WORCSS6 LED Replacement

This guide will show you how to replace the two LED lights in the Modal electric wine bottle opener.

Written By: Michael Richard Cassell



INTRODUCTION

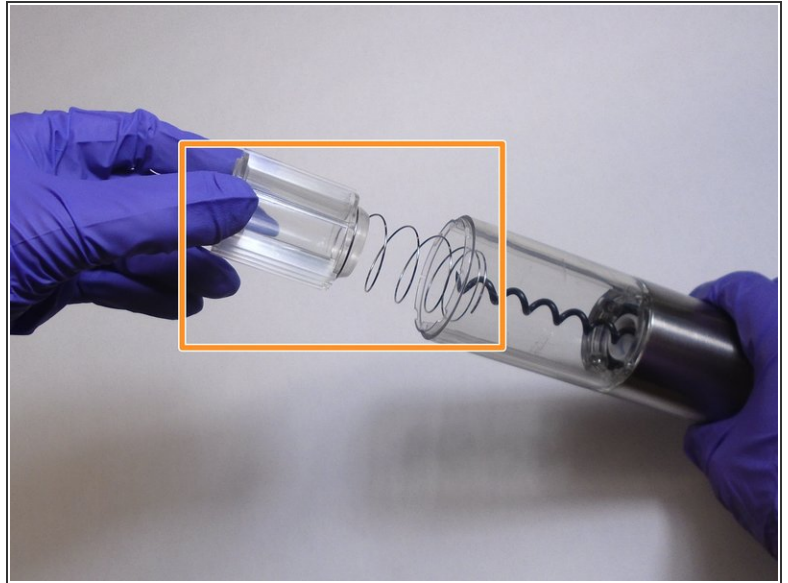
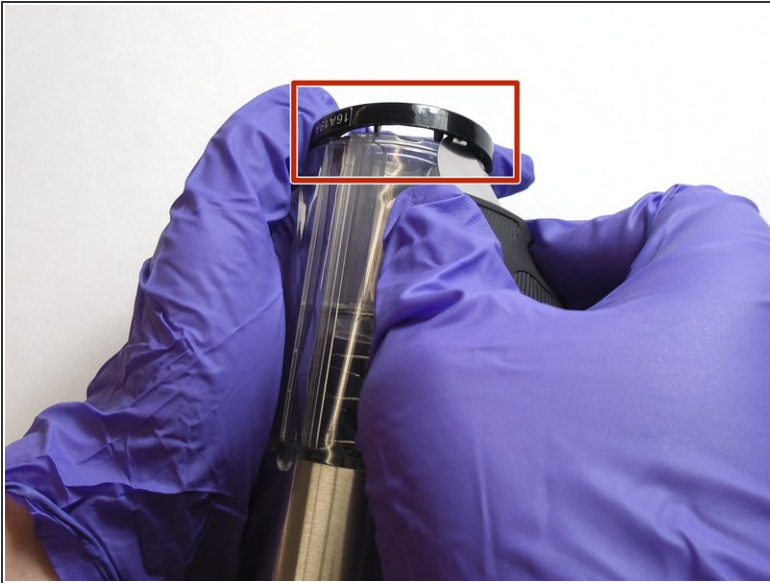
The following steps in this guide explains how to replace the LED lights in the MODAL WORCSS6 wine opener. The LED lights are important to be able to see where the corkscrew is when approaching the wine bottle. The LEDs also create a nice visual display for guest or the user. This guide will require soldering, so check out [this soldering guide](#) if you are unfamiliar with the process.



TOOLS:

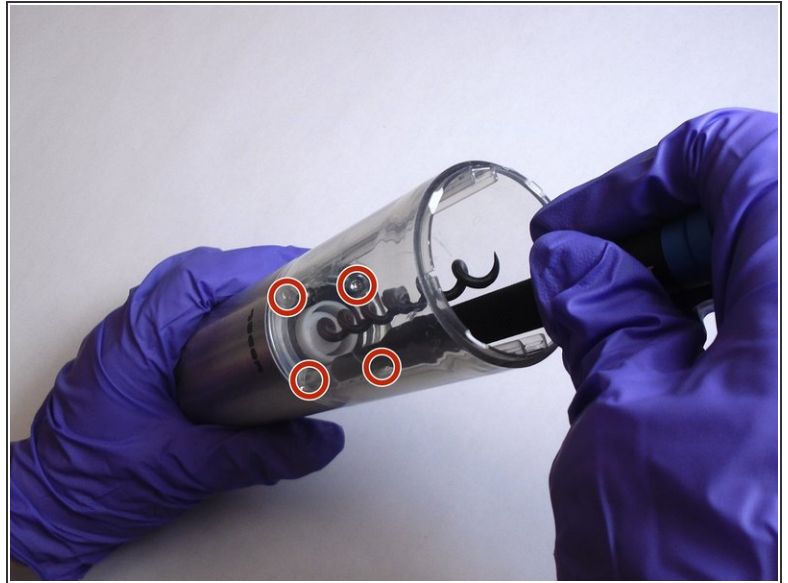
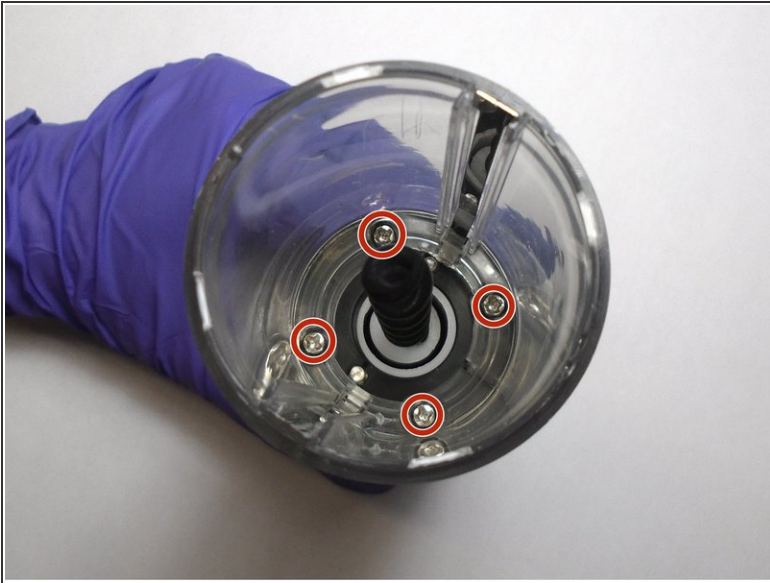
- [ESD Gloves or Bracelet](#) (1)
- [Phillips #1 Screwdriver](#) (1)
- [Jimmy](#) (1)
- [Soldering Iron](#) (1)
- [Solder](#) (1)
- [Tweezers](#) (1)

Step 1 — Modal MD-WORCSS6 Teardown Guide



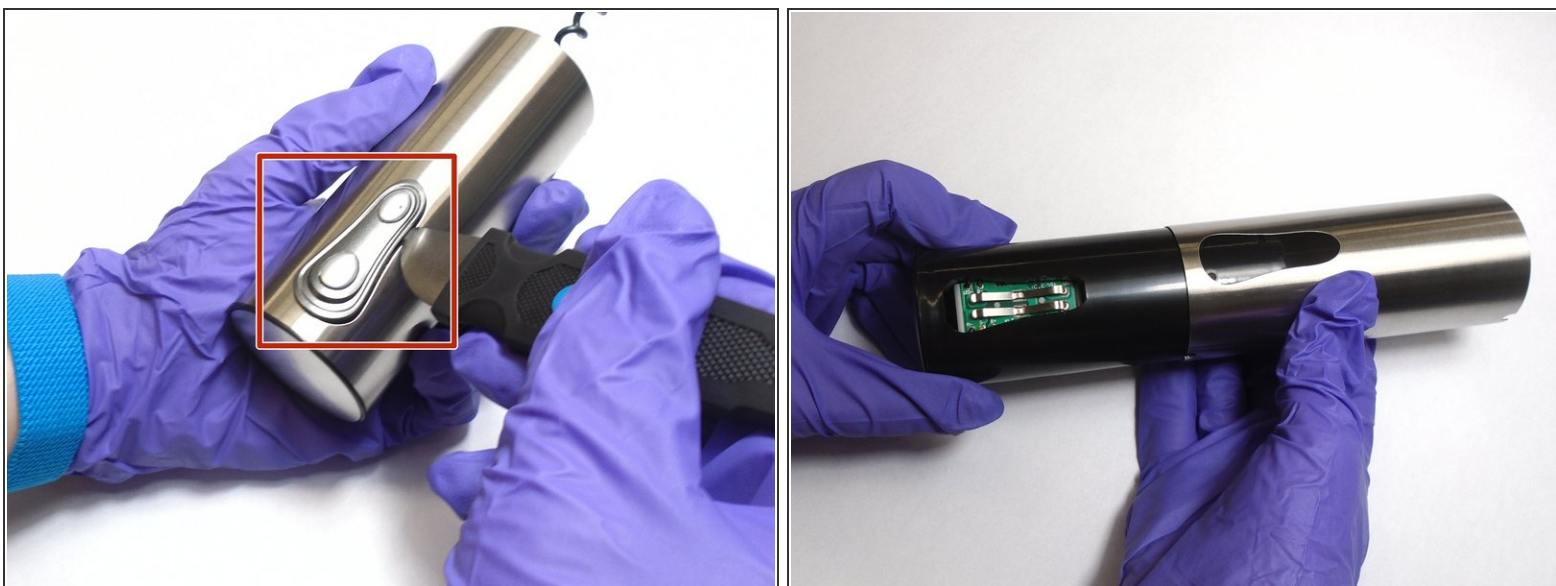
- Put on Electrostatic Discharge (ESD) bracelet. Hold the device with the transparent plastic casing on the top.
- Using the jimmy tool, carefully pry off the black plastic ring.
- Remove the spring assembly from inside the transparent plastic tube.

Step 2



- Using a Phillips #1 screwdriver, unscrew each of the four 12.7 mm screws inside and at the bottom of the plastic tube.
- Take the plastic tube off of the metal casing.

Step 3



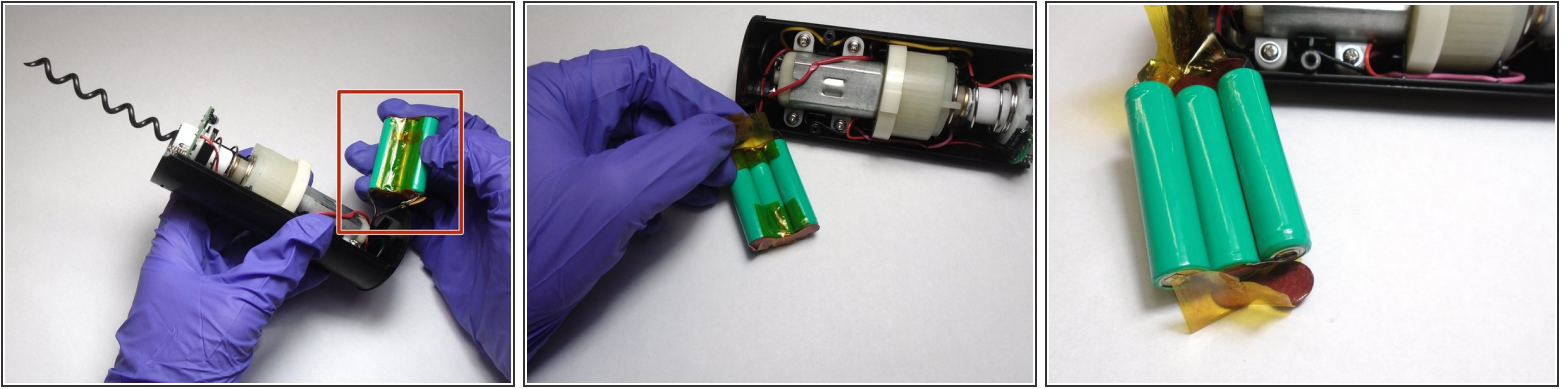
- Place the jimmy tool blade between the button assembly and the metal casing. Gently pry off the button assembly; it should pop out.
- With the button assembly removed, slide off the metal casing.

Step 4



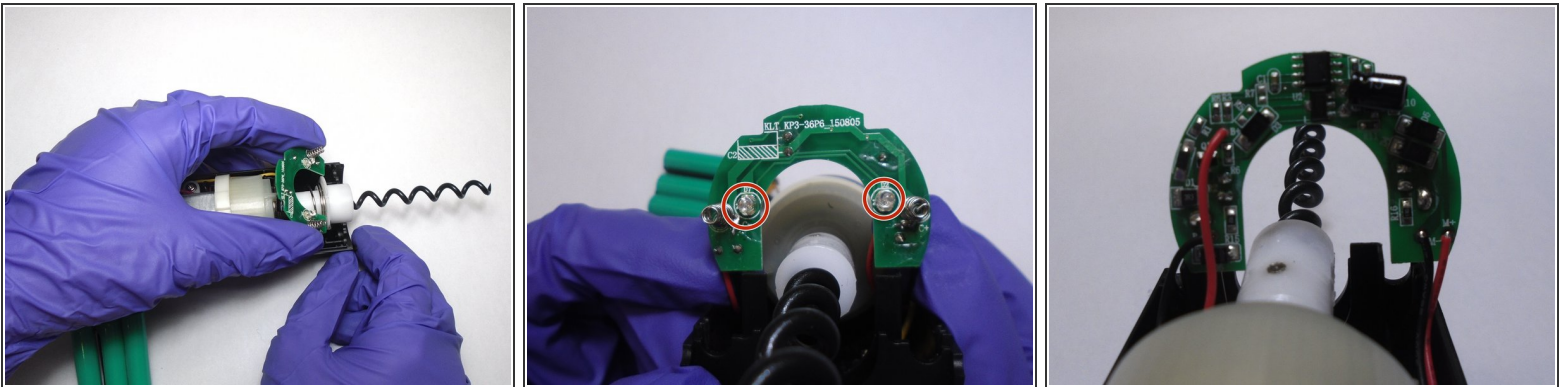
- Unscrew the two 6.4 mm screws in the black plastic body using the Phillips #1 screwdriver.
- Separate the two halves of the plastic body. Keep the half containing the motor facing up.

Step 5



- Carefully peel the tape off far enough to remove the 3 batteries.

Step 6 — LED



- Slide the circuit board out of its slot.
- Remove the LEDs by clipping off their connections with a pair of tweezers.
- Attach the new LEDs by soldering the ends of the LEDs to their corresponding connections on the circuit board.
- ⓘ Check out our [How to Solder and Desolder Connections guide](#) for best practices and soldering tips.

To reassemble your device, follow these instructions in reverse order.