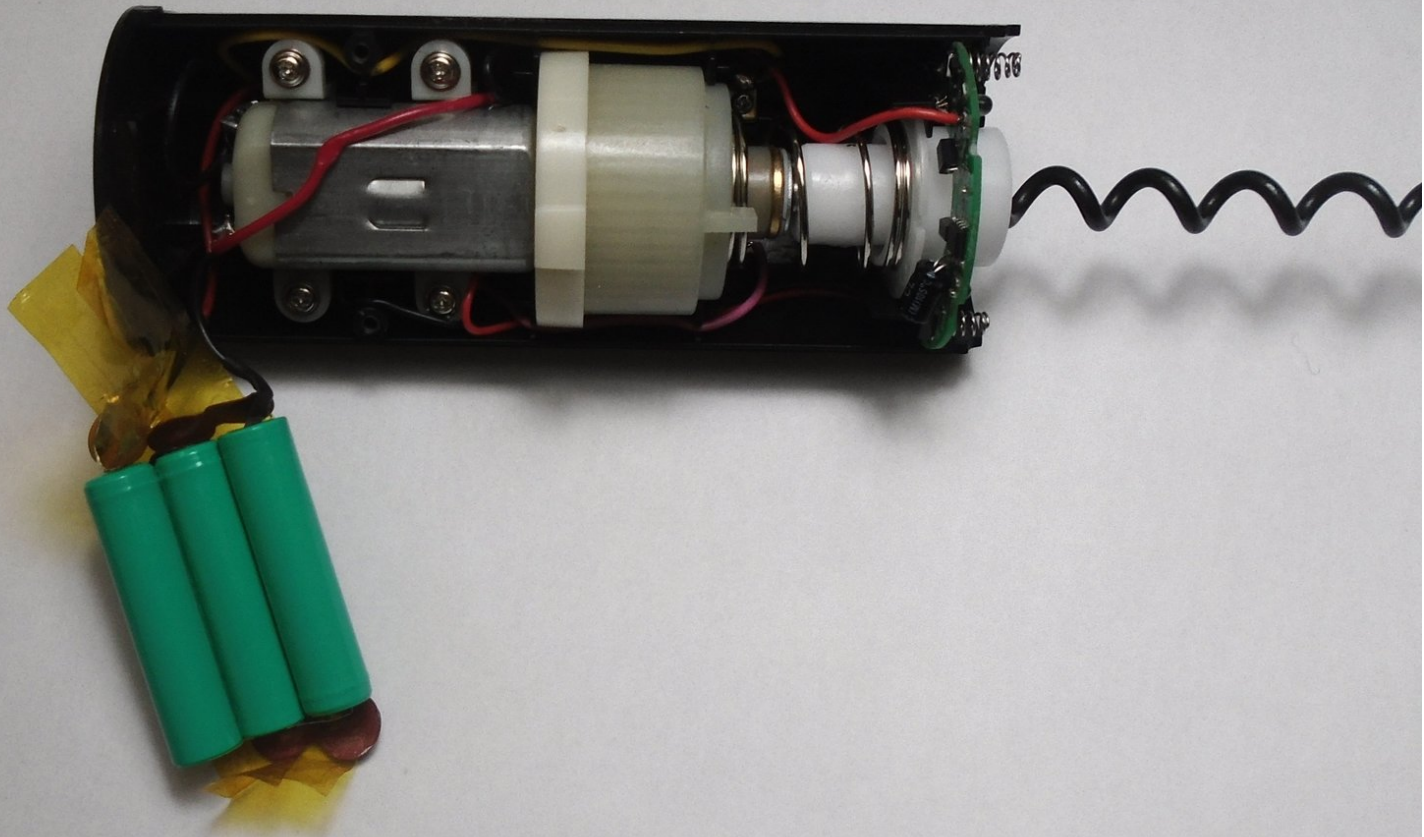




# Modal MD-WORCSS6 Battery Replacement

This guide explains how to replace the batteries for the Modal MD-WORCSS6 wine bottle opener.

Written By: Luke Timmerman



---

## INTRODUCTION

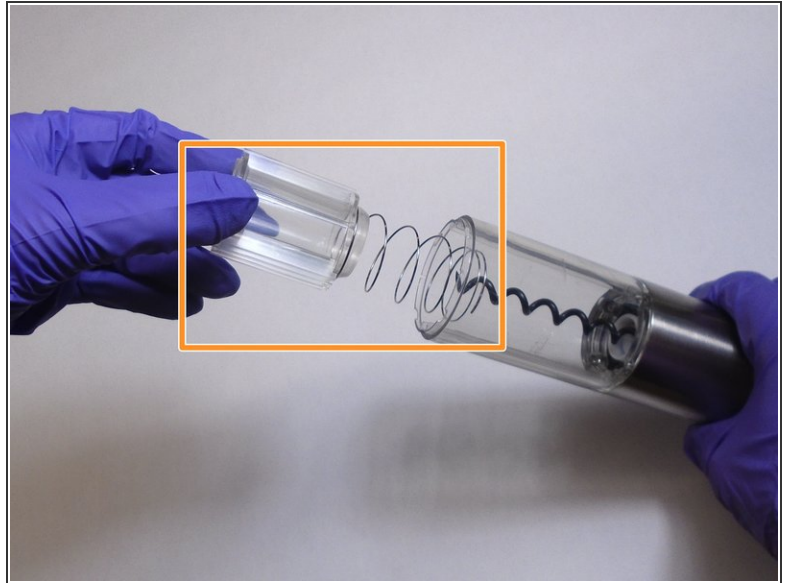
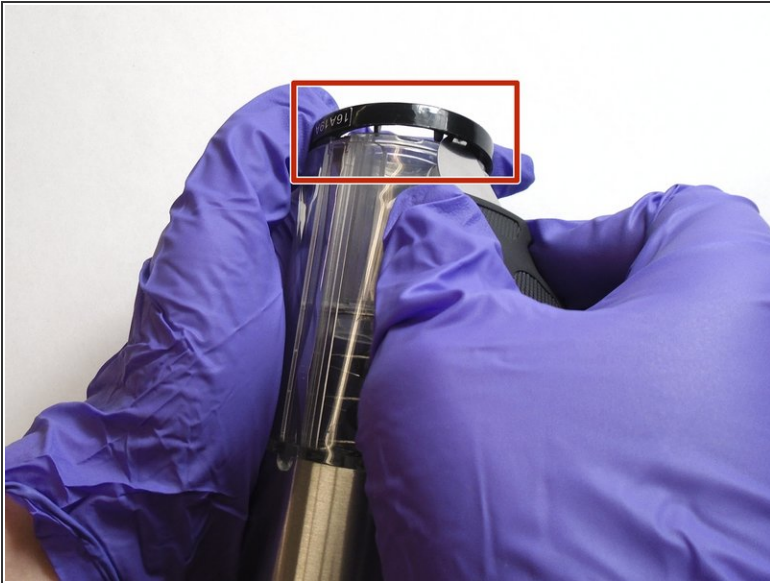
The following steps in this guide explains how to replace the batteries in the MODAL WORCSS6 wine opener. The batteries inside the MODAL WORCSS6 wine opener are rechargeable, but they can burn out or lose their ability to hold a charge with age. The batteries are an essential part of the wine opener and give power to the motor and LED lights.



### TOOLS:

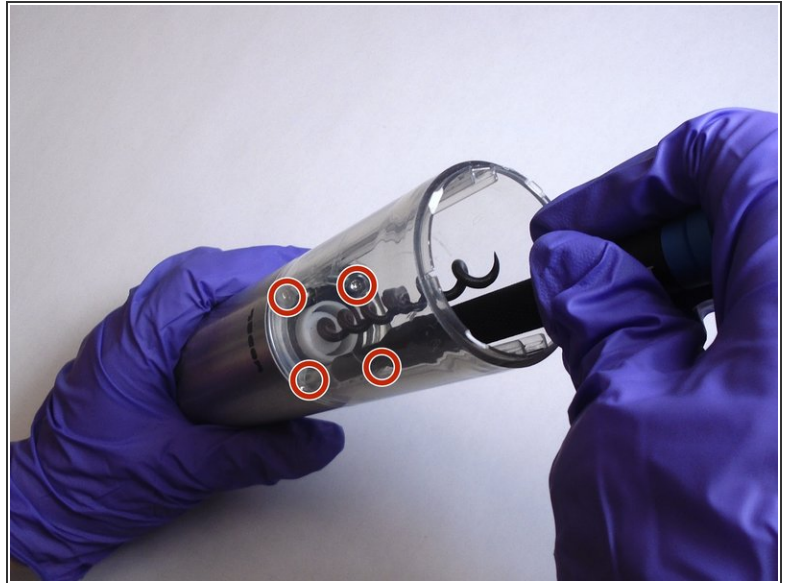
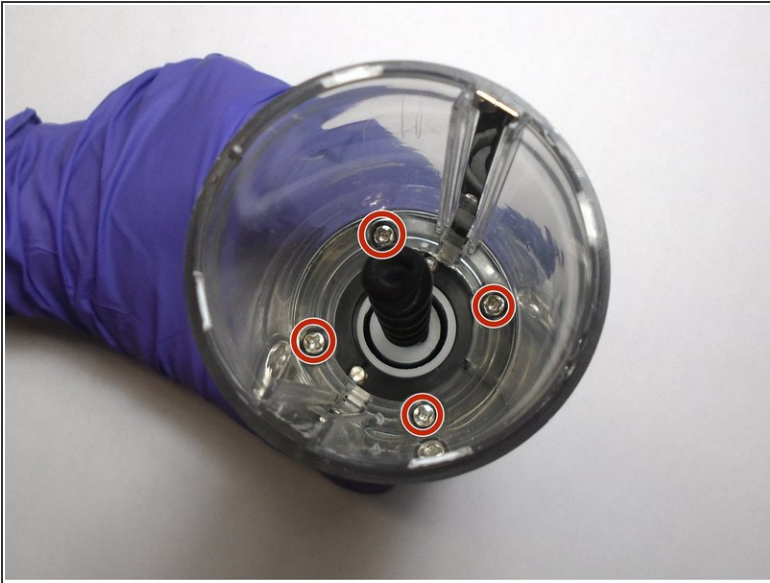
- [Jimmy](#) (1)
  - [ESD Gloves or Bracelet](#) (1)
  - [Phillips #1 Screwdriver](#) (1)
-

## Step 1 — Modal MD-WORCSS6 Teardown Guide



- Put on Electrostatic Discharge (ESD) bracelet. Hold the device with the transparent plastic casing on the top.
- Using the jimmy tool, carefully pry off the black plastic ring.
- Remove the spring assembly from inside the transparent plastic tube.

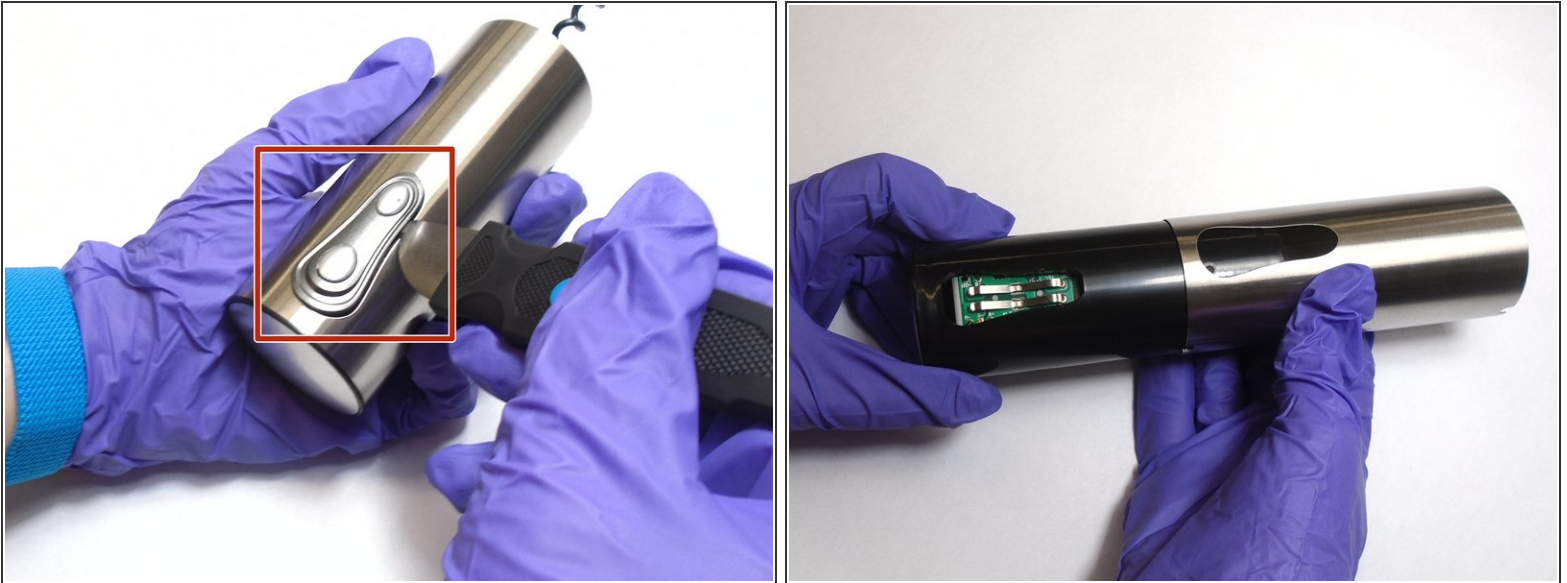
## Step 2



- Using a Phillips #1 screwdriver, unscrew each of the four 12.7 mm screws inside and at the bottom of the plastic tube.
- Take the plastic tube off of the metal casing.



### Step 3



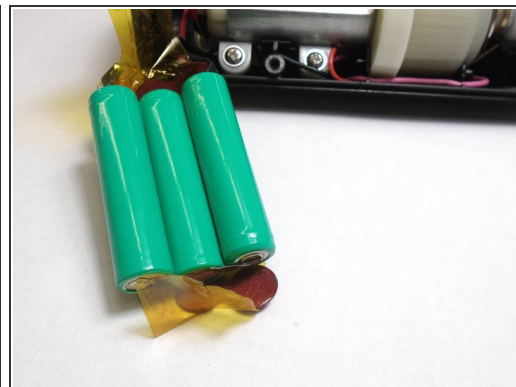
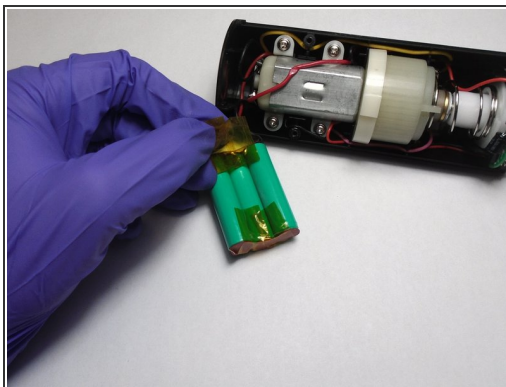
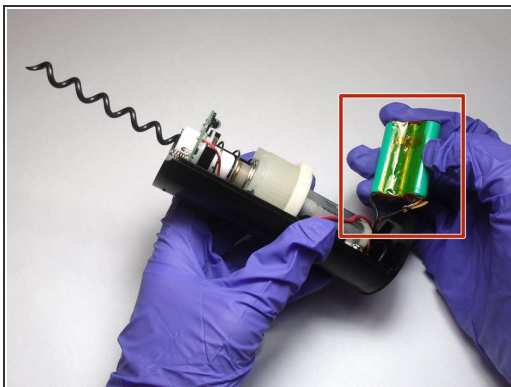
- Place the jimmy tool blade between the button assembly and the metal casing. Gently pry off the button assembly; it should pop out.
- With the button assembly removed, slide off the metal casing.

### Step 4



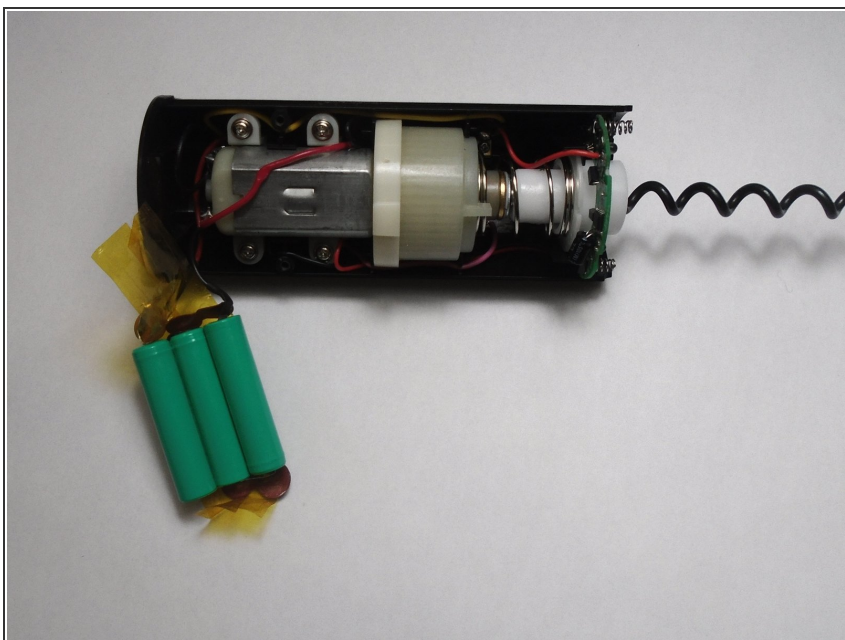
- Unscrew the two 6.4 mm screws in the black plastic body using the Phillips #1 screwdriver.
- Separate the two halves of the plastic body. Keep the half containing the motor facing up.

## Step 5



- Carefully peel the tape off far enough to remove the 3 batteries.

## Step 6 — Battery



- Replace the batteries by pulling them out of their holder and putting new ones in the same places.

To reassemble your device, follow these instructions in reverse order.