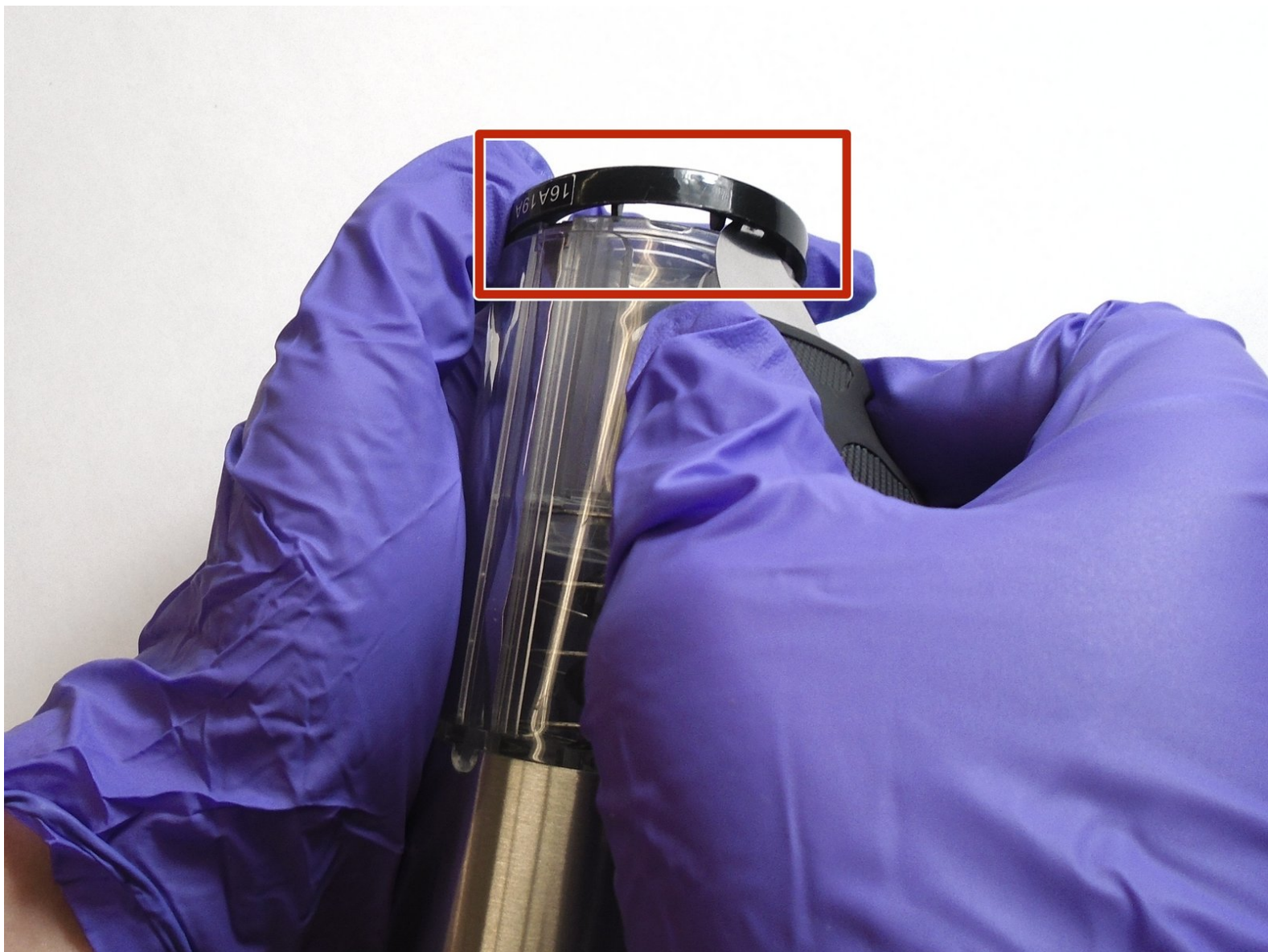




Modal MD-WORCSS6 Teardown Guide

This guide walks through how to disassemble the Modal MD-WORCSS6 as a prerequisite to replacing the device's internal parts.

Written By: Luke Timmerman



INTRODUCTION

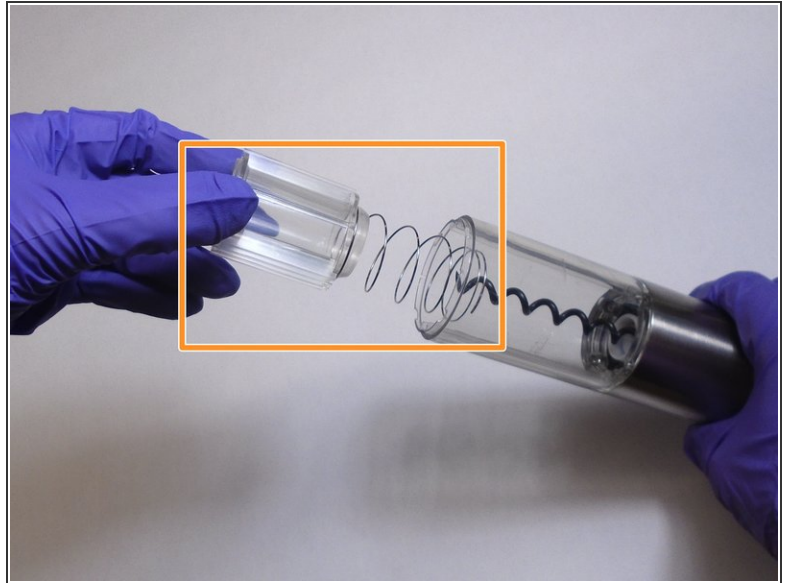
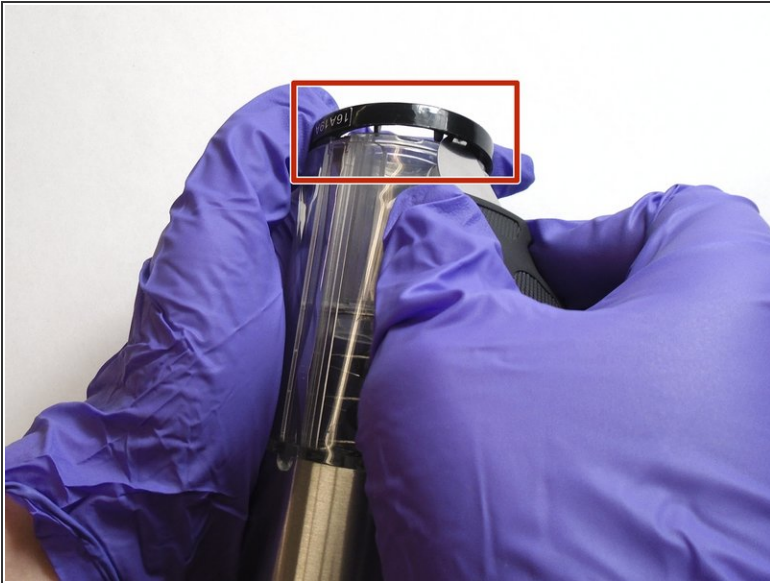
The full teardown of the MODAL WORCSS6 wine opener gives the user access to many of the critical internal components of the device for ease of repair and replacement.



TOOLS:

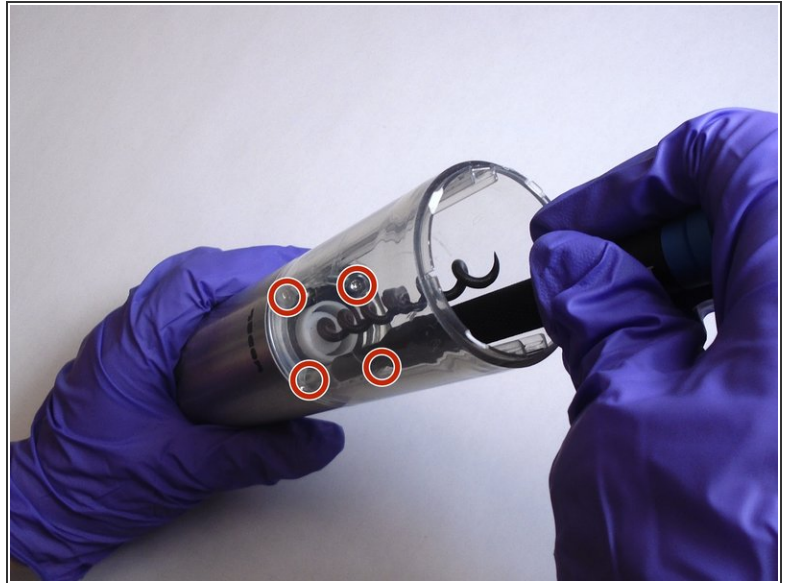
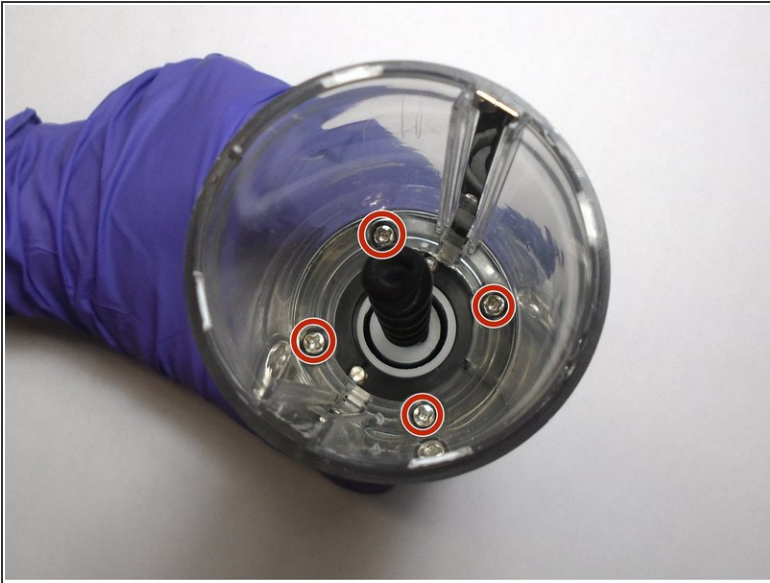
- [Jimmy](#) (1)
 - [ESD Gloves or Bracelet](#) (1)
 - [Phillips #1 Screwdriver](#) (1)
-

Step 1 — Modal MD-WORCSS6 Teardown Guide



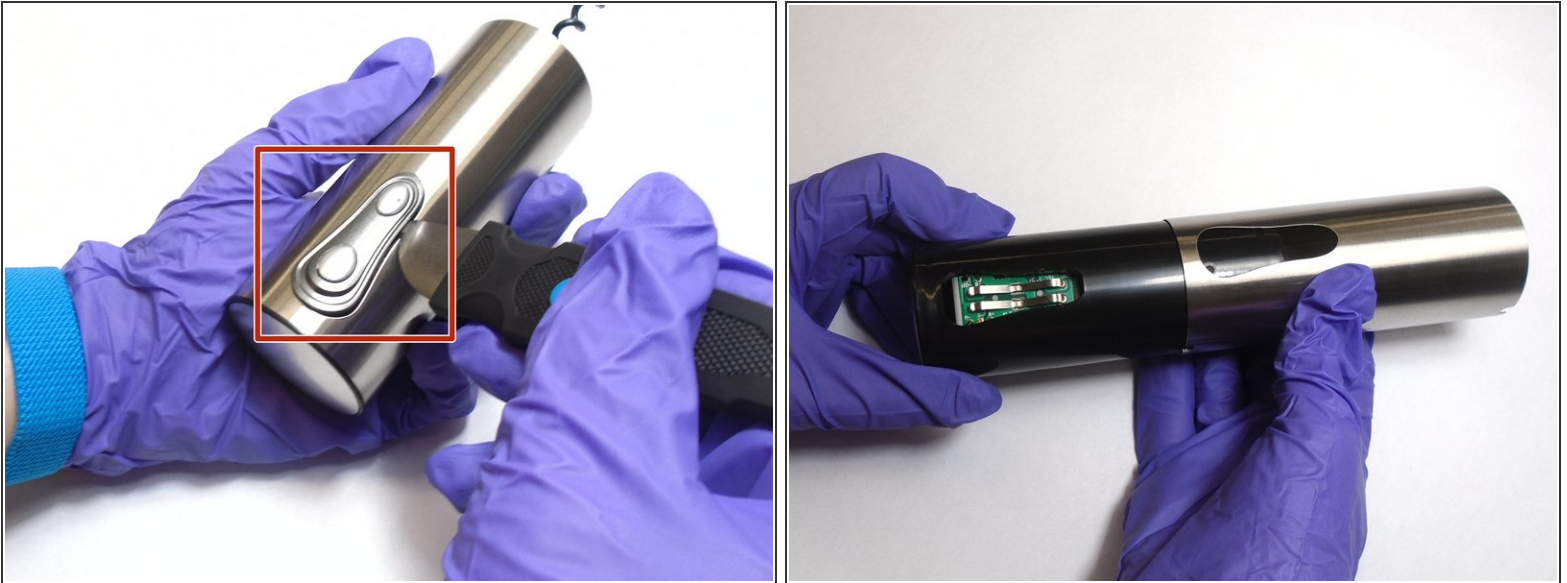
- Put on Electrostatic Discharge (ESD) bracelet. Hold the device with the transparent plastic casing on the top.
- Using the jimmy tool, carefully pry off the black plastic ring.
- Remove the spring assembly from inside the transparent plastic tube.

Step 2



- Using a Phillips #1 screwdriver, unscrew each of the four 12.7 mm screws inside and at the bottom of the plastic tube.
- Take the plastic tube off of the metal casing.

Step 3



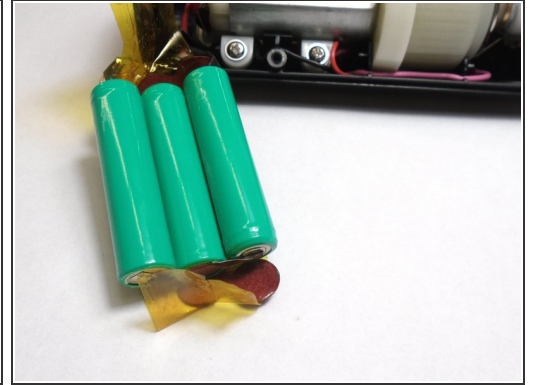
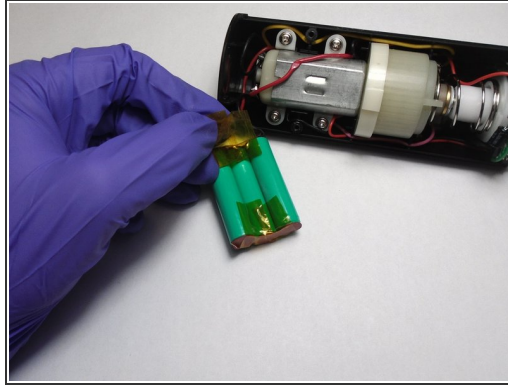
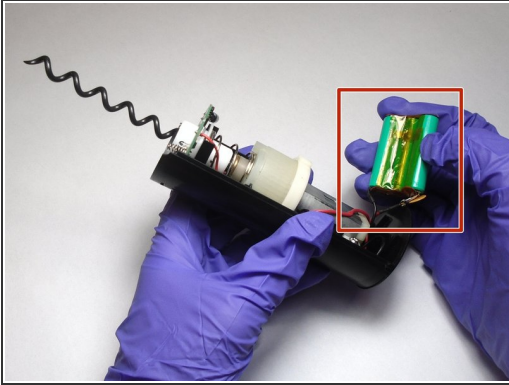
- Place the jimmy tool blade between the button assembly and the metal casing. Gently pry off the button assembly; it should pop out.
- With the button assembly removed, slide off the metal casing.

Step 4



- Unscrew the two 6.4 mm screws in the black plastic body using the Phillips #1 screwdriver.
- Separate the two halves of the plastic body. Keep the half containing the motor facing up.

Step 5



- Carefully peel the tape off far enough to remove the 3 batteries.