



Dell Latitude E7470 Display Replacement

Replace Dell Latitude E7470 display step by step instruction

Written By: Yihao Huang



INTRODUCTION

The display is one of the most vital pieces of equipment on any electronic device; Without the display there is no way of monitoring your Dell Latitude E7470.

Signs that you need to replace your display are: cracked or damaged screen, low lighting of screen, or display will not show anything. However, follow this guide correctly and you will have your computer back up and running in no time.

Before you start the disassembly process, make sure that it is indeed your display that is the issue, rather than your motherboard or something else. Then you want to start by completely powering your device off; working on a device while it is on can be very damaging.



TOOLS:

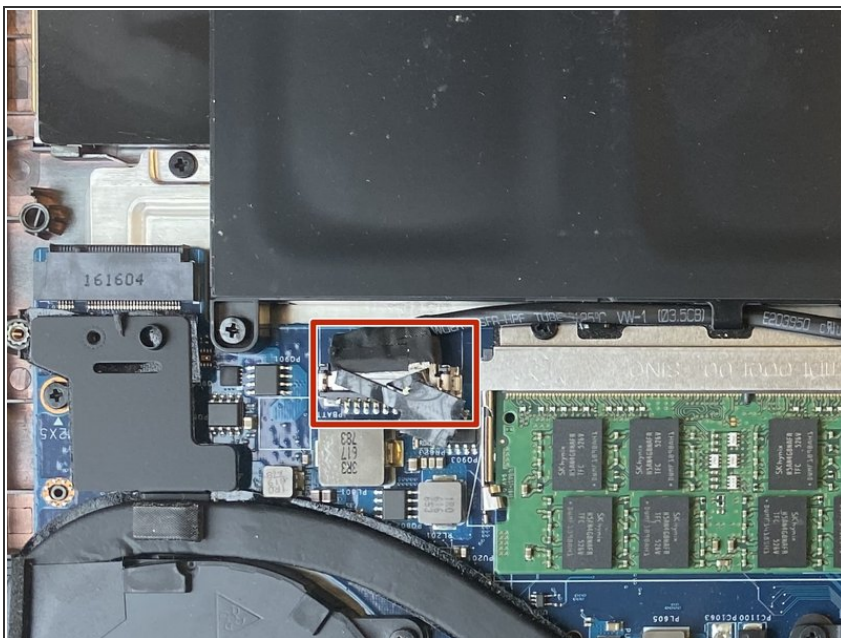
- [Phillips #0 Screwdriver](#) (1)
 - [Long Neck Phillips Size 0 Screwdriver](#) (1)
 - [iFixit Opening Picks \(Set of 6\)](#) (1)
-

Step 1 — Back Cover



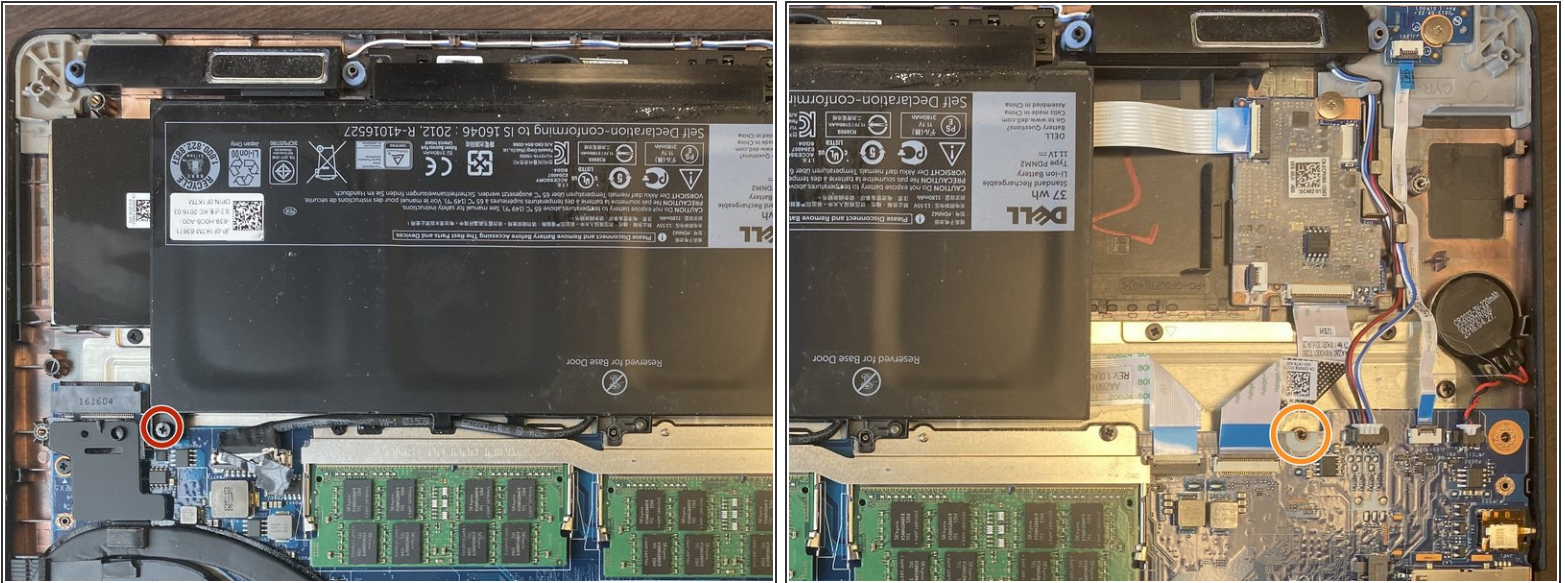
- Remove the eight 4 mm screws on the back cover using a Phillips #0 screwdriver.

Step 2 — Battery



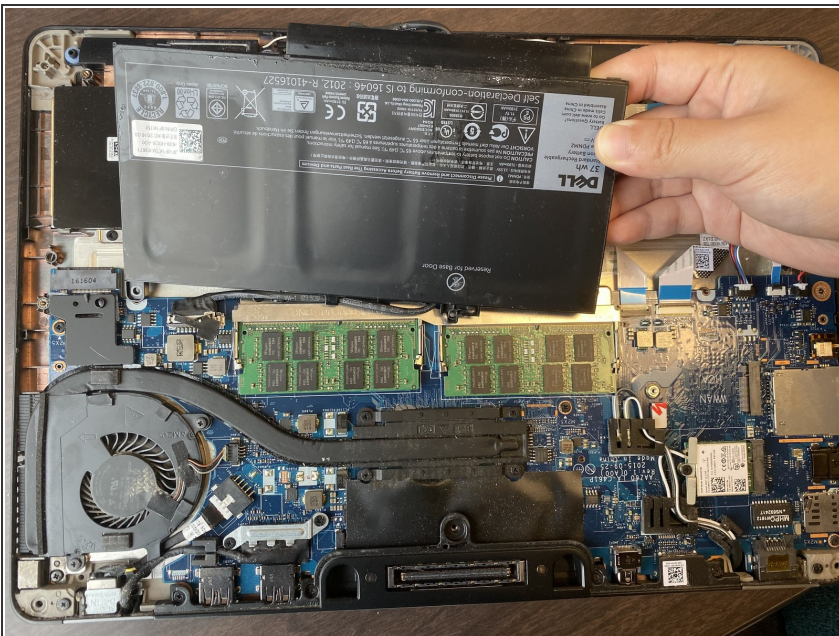
- Use the pull tab on the battery connector to lift the connector straight up off its socket on the motherboard, disconnecting it.

Step 3



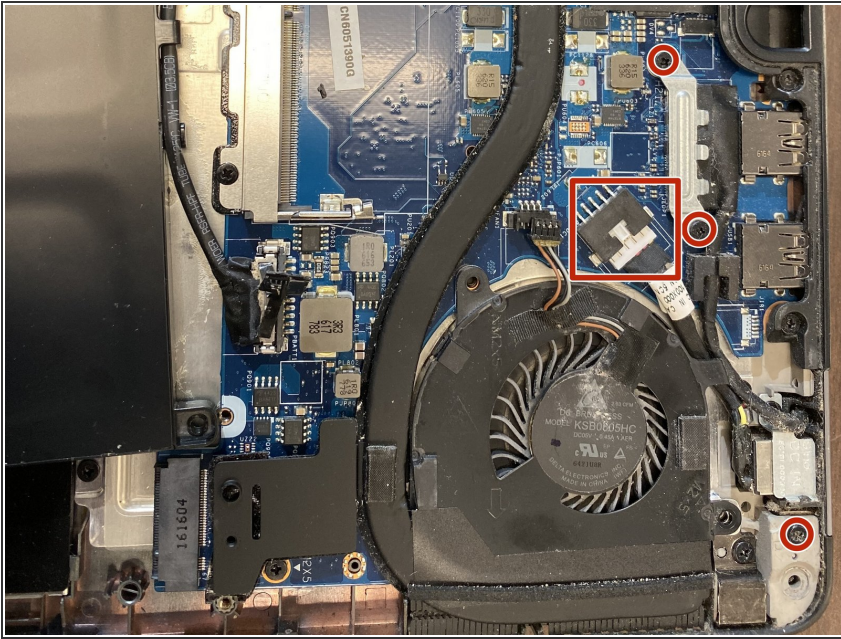
- Remove the single 4 mm Phillips screw securing the bottom left corner of the battery.
- If you are removing an extended capacity battery, remove the Phillips screw securing the bottom right corner of the battery.

Step 4



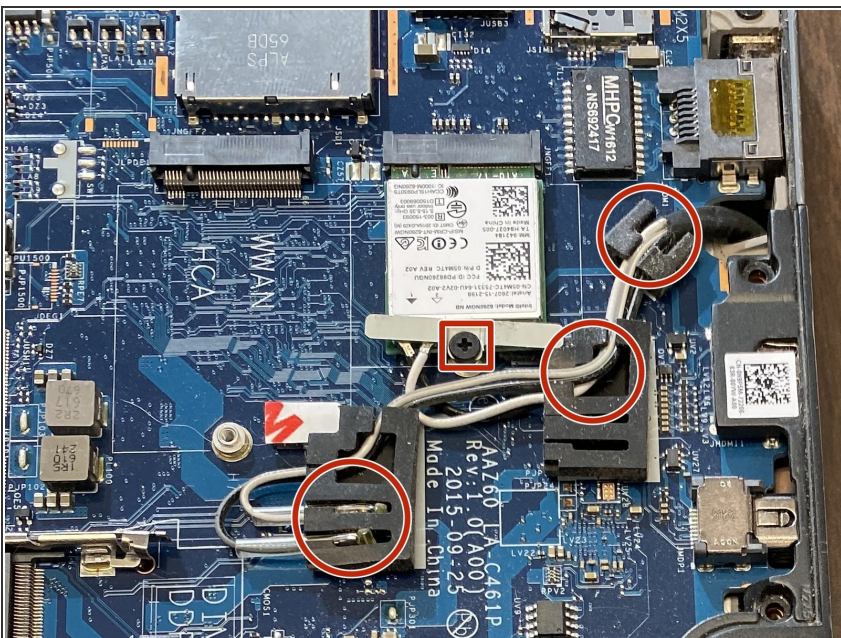
- Remove the battery from the laptop.

Step 5 — Display



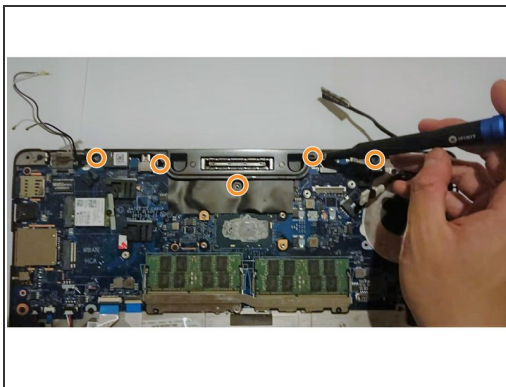
- Remove screws which are indicated by red circles . Gently unplug the write connector, marked by the red square, out of the grey socket.

Step 6



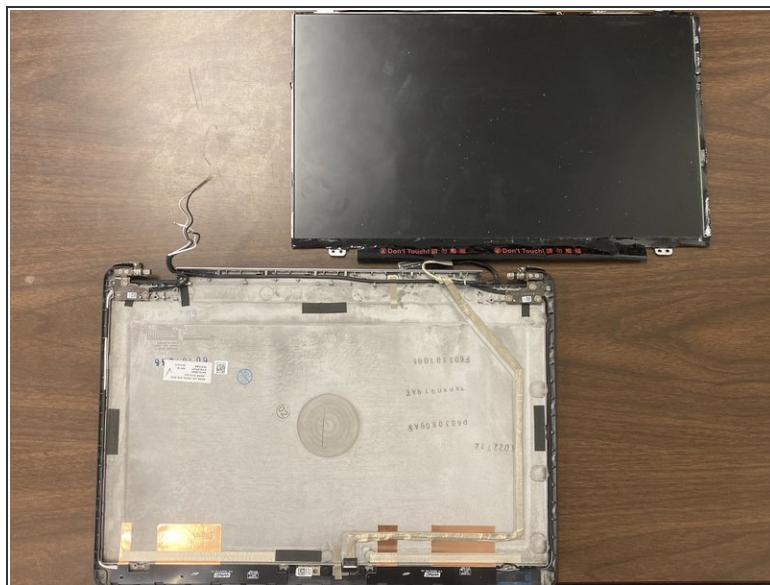
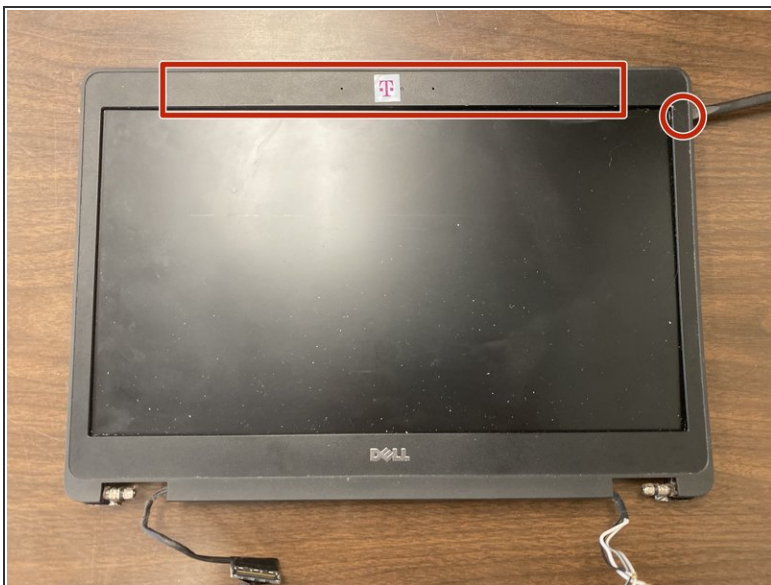
- Remove wires in protectors (red circles) and remove the screw in red square. Pick the wires out of the motherboard.

Step 7



- Remove two side screws on the surface of computer's connector parts.
- Remove the five 0.4 cm screws in the red circle

Step 8



- Use spudger to pry the display bezel.

Step 9



- This the screen part can be replaced. Make sure you buy the correct size!

To reassemble your device, follow these instructions in reverse order.