



Canon Pixma MP480 Motherboard Replacement

Replace the motherboard in your Canon Pixma MP480.

Written By: nathan zorndorf



INTRODUCTION

This guide will show you how to detach the motherboard from the printer, in order to replace or repair it.



TOOLS:

- [Desoldering Braid](#) (1)
- [Phillips #1 Screwdriver](#) (1)
- [Rosin Flux](#) (1)
- [Lead-Free Solder](#) (1)
- [Soldering Workstation](#) (1)



PARTS:

- [Canon Pixma MP480 Motherboard](#) (1)

Step 1 — Rear and Side Panel



- Remove the two 7.9 mm screws using a Phillips #1 screwdriver.

Step 2



- Lift up the back cover to remove it.
 - ⓘ You may need to lift firmly as it requires quite a bit of force.

Step 3




- Open the front tray.

Step 4



- Open the scanner compartment.

-  Make sure the blue lever locks into place to keep the compartment open.

Step 5



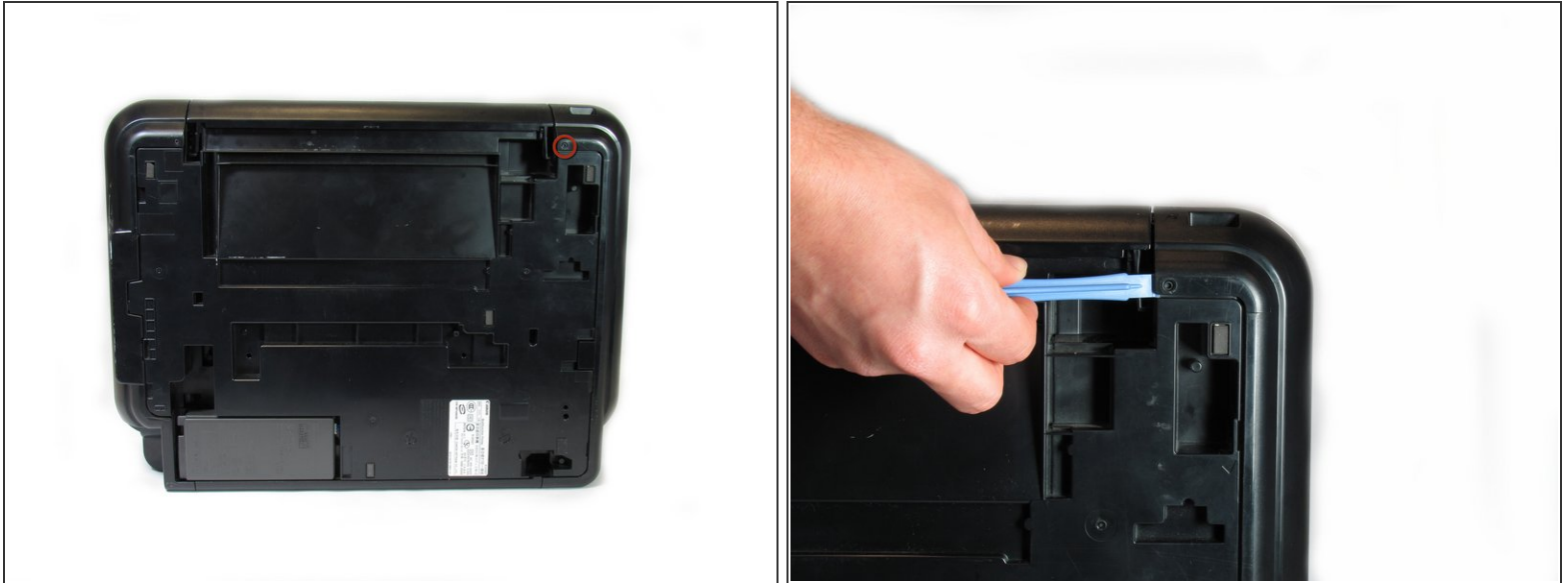
- Remove the blue lever from its slot by pushing it back and twisting clockwise.
- Close the scanner compartment and cover.

Step 6



- Pry open the side cover with the plastic opening tool.

Step 7



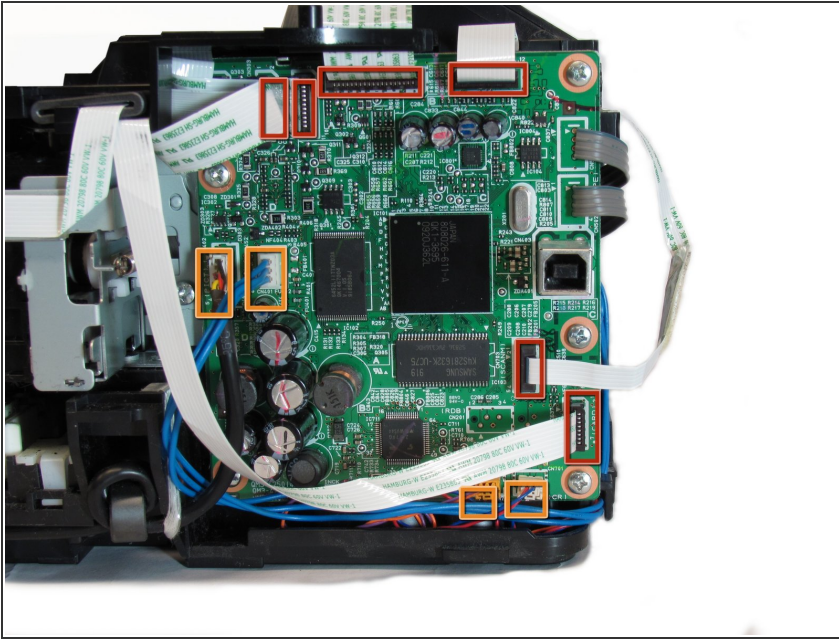
- Flip the printer over so that you are facing the bottom of the printer.
- Use the plastic opening tool to remove the corner of the side panel from the plastic pin.

Step 8



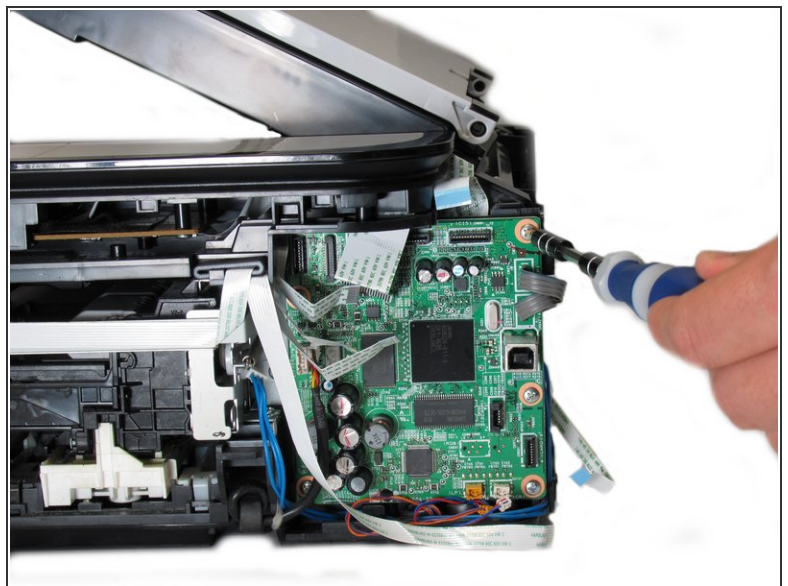
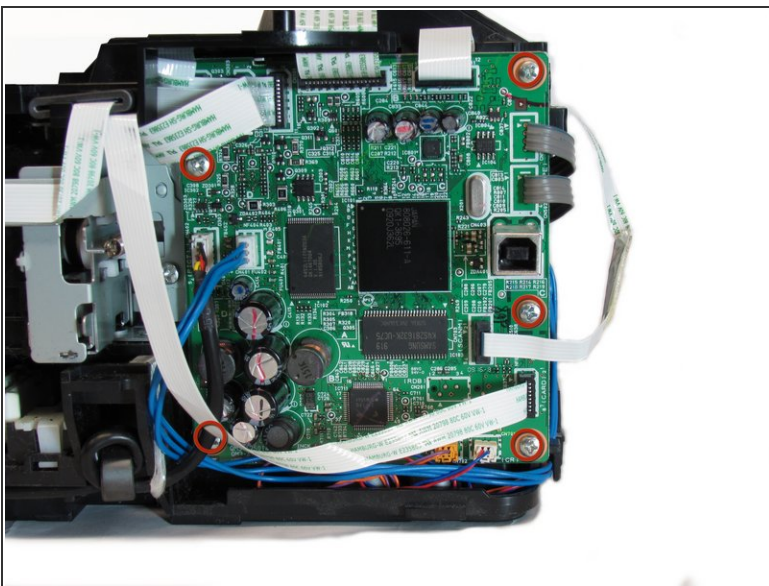
- Use the plastic opening tool to loosen the side panel from the bottom of the printer.

Step 9 — Motherboard



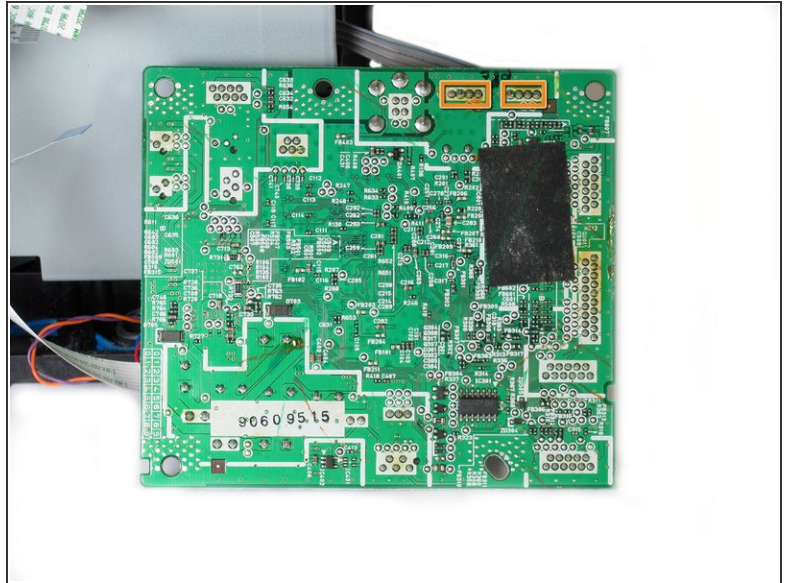
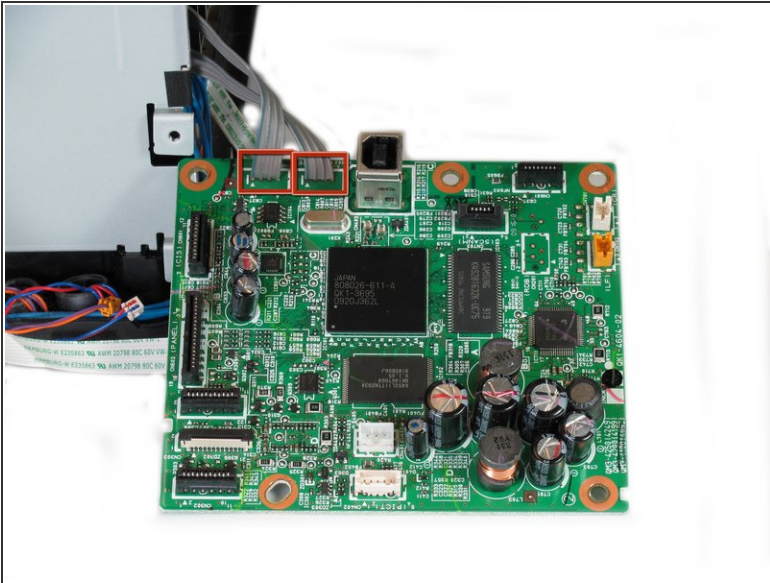
- Gently pull the 6 ribbon wires out.
- Gently pull the 4 molded cable assemblies out.

Step 10



- Unscrew the five silver Phillips screws that secure the motherboard:
 - Five 3.65mm Phillips #1 screws.

Step 11



- Once all wires and screws have been removed, gently take the motherboard out of the printer.
 - These wires are soldered onto the bottom of the PCB and must be de-soldered in order to completely detach the motherboard from the printer.
- ⚠ If you do not know how to operate a soldering iron, do not attempt to finish this guide.
- De-solder these eight solder joints on the bottom of the motherboard.
 - When reinstalling the motherboard back into the printer, solder the highlighted joints (in orange markers in the second photo) back onto the board.

Congratulations on successfully removing the motherboard from the printer! To reassemble the motherboard, follow these instructions in reverse order.