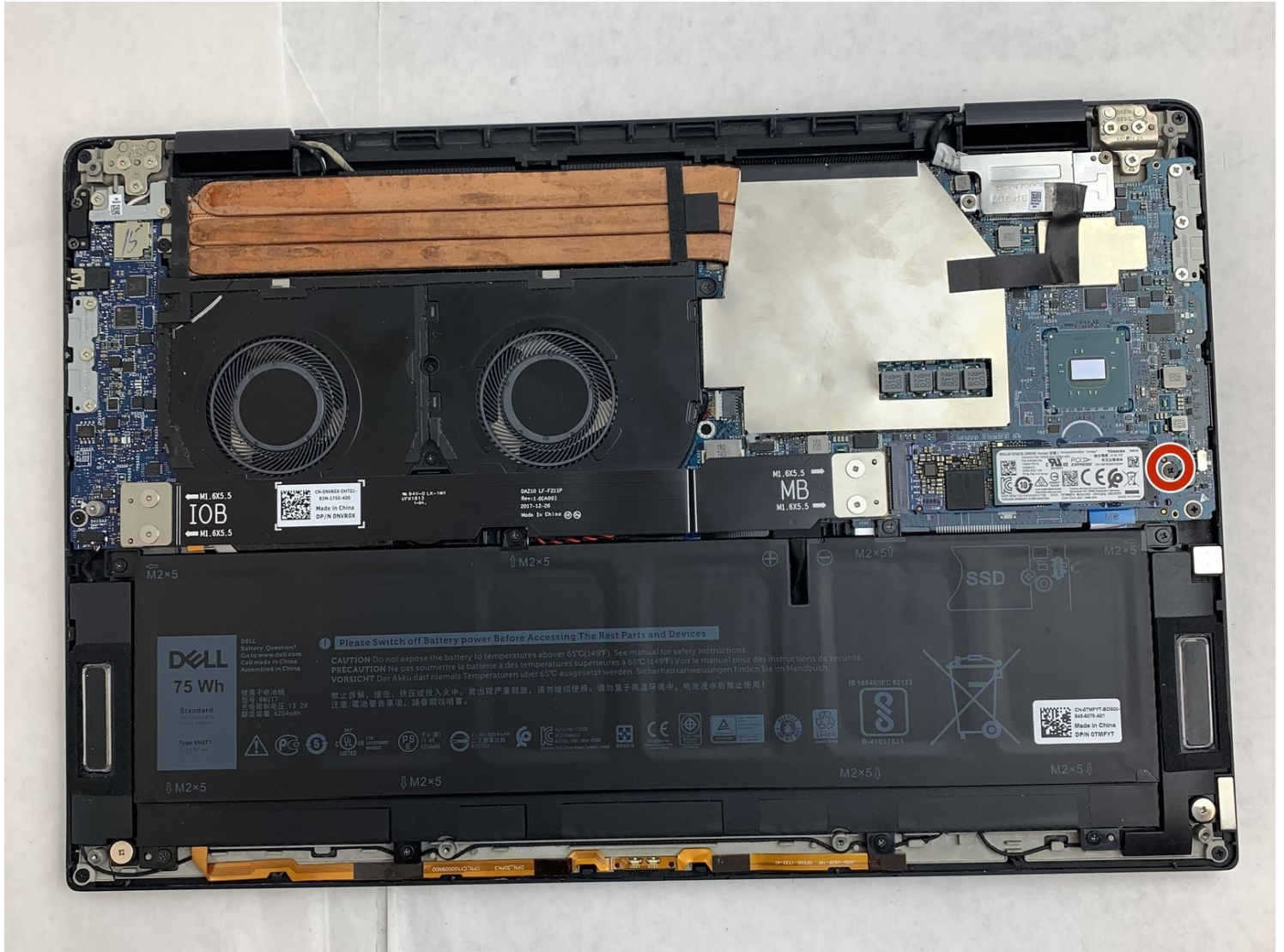




# Dell XPS 15 9575 Solid State Drive Replacement

Use this guide in order to replace or upgrade...

Written By: Benjamin



# INTRODUCTION

Use this guide in order to replace or upgrade your solid state drive (SSD) on the Dell XPS 15 9575.

The solid state drive is responsible for the long term or non-volatile storage of data on the device. If your computer comes up with a data corruption error, it's most likely the cause of a malfunctioning solid state drive. The SSD also contains the operating system for the device, so if your computer has difficulties starting up this may also be a sign of a faulty SSD.

Check out the [Dell XPS 15 9575 Troubleshooting Page](#) for more information on problems you might experience with your SSD.



## TOOLS:

iFixit Opening Picks (Set of 6) (1)  
T5 Torx Screwdriver (1)  
iFixit Opening Tool (1)  
Phillips #0 Screwdriver (1)



## PARTS:

Crucial P3 NVMe PCIe M.2 2280SS SSD (1)  
Crucial P3 Plus NVMe PCIe M.2 2280SS SSD (1)  
Crucial P5 Plus PCIe M.2 2280SS SSD (1)

## Step 1 — Bottom Cover



**⚠ For your safety, please make sure the device is powered off and the A/C adapter is unplugged.**

- Use your T5 Torx driver to remove all eight 3.2mm hex screws holding down the back panel.
- Wedge an opening pick between the back cover and the base of the board, then slightly lift the tool to pop the clips on the back cover off.

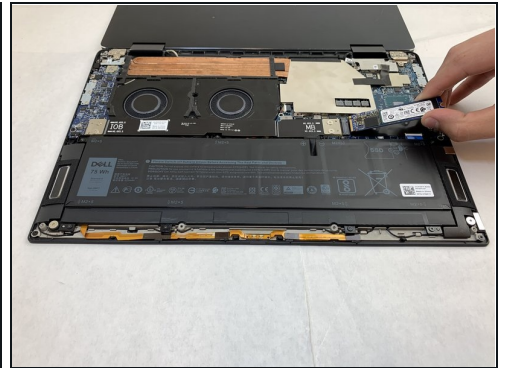
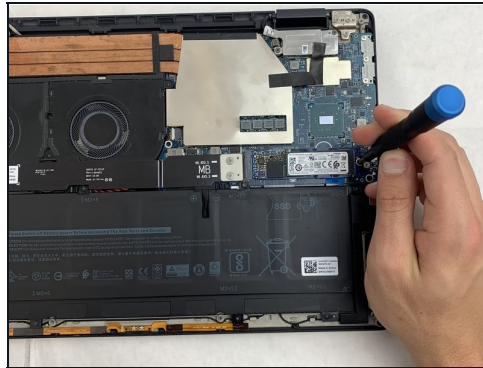
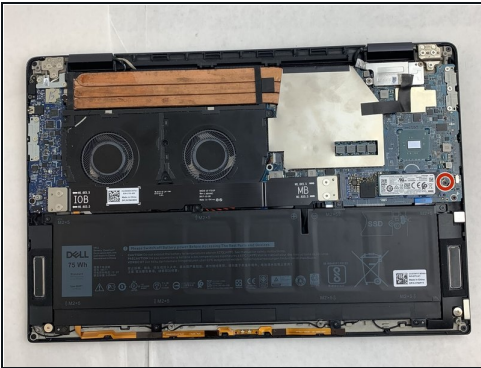
## Step 2



⚠ Make sure all screws are removed before you lift the panel to prevent any damage from occurring.

- Remove the bottom cover from the device when all sides are free.

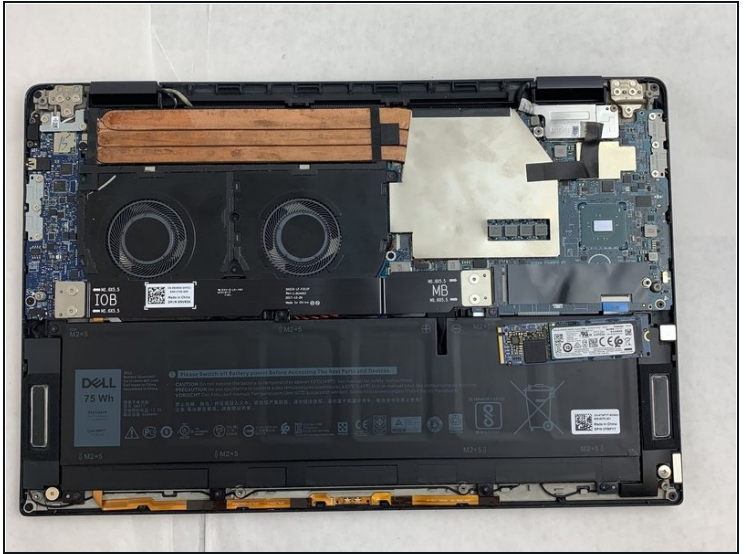
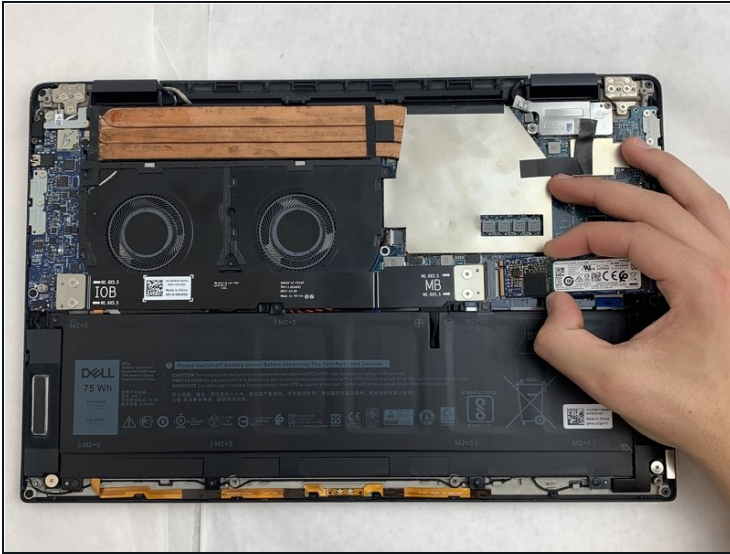
## Step 3 — Solid State Drive



- Use the Phillips #0 Screwdriver to remove a single 3.2mm screw from the SSD Drive.

ⓘ You will know the drive is released when the side holding the screw raises.

## Step 4



- Carefully slide the SSD from its port, removing it from the device.

To reassemble your device, follow these instructions in reverse order.