



Canon Pixma MP480 LCD Replacement

If your LCD is cracked or not turning on...

Written By: Steven MacLean



INTRODUCTION

If your LCD is cracked or not turning on replace it with this guide.

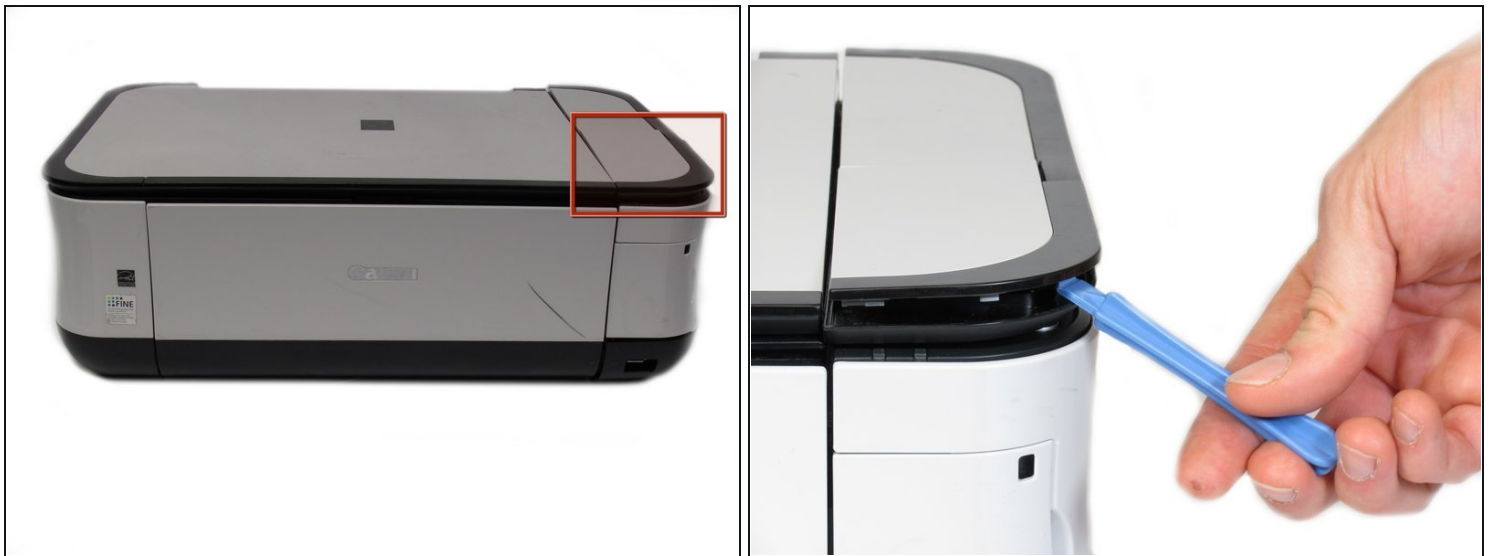
TOOLS:

[iFixit Opening Tool](#) (1)

[Spudger](#) (1)

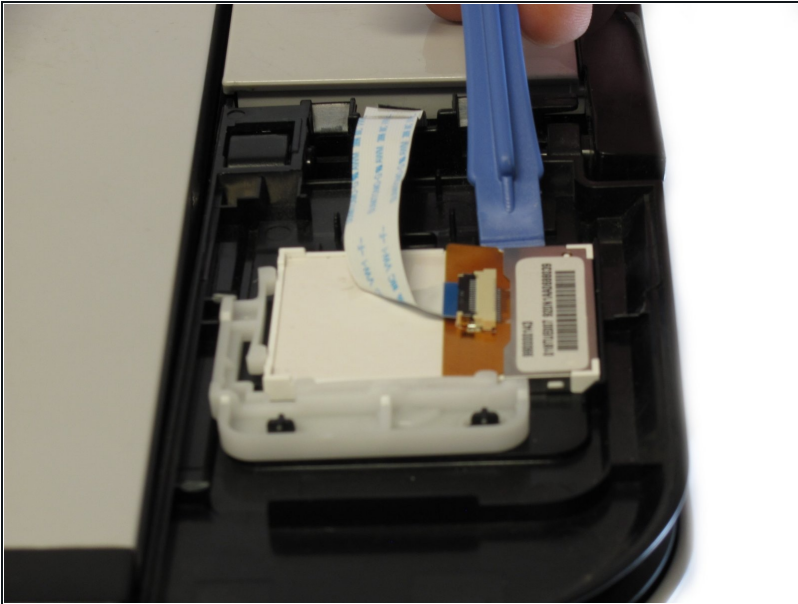
[Phillips #00 Screwdriver](#) (1)

Step 1 — LCD



- Using the plastic opening tool, pry off the top cover of the LCD assembly.
 - ⓘ Pry around the front and side edges for the easiest removal.

Step 2



- After removing the top cover of the LCD assembly, remove the LCD using the plastic opening tool.

Step 3



- Gently pull the ribbon cable to remove the LCD completely.

To reassemble your device, follow these instructions in reverse order.