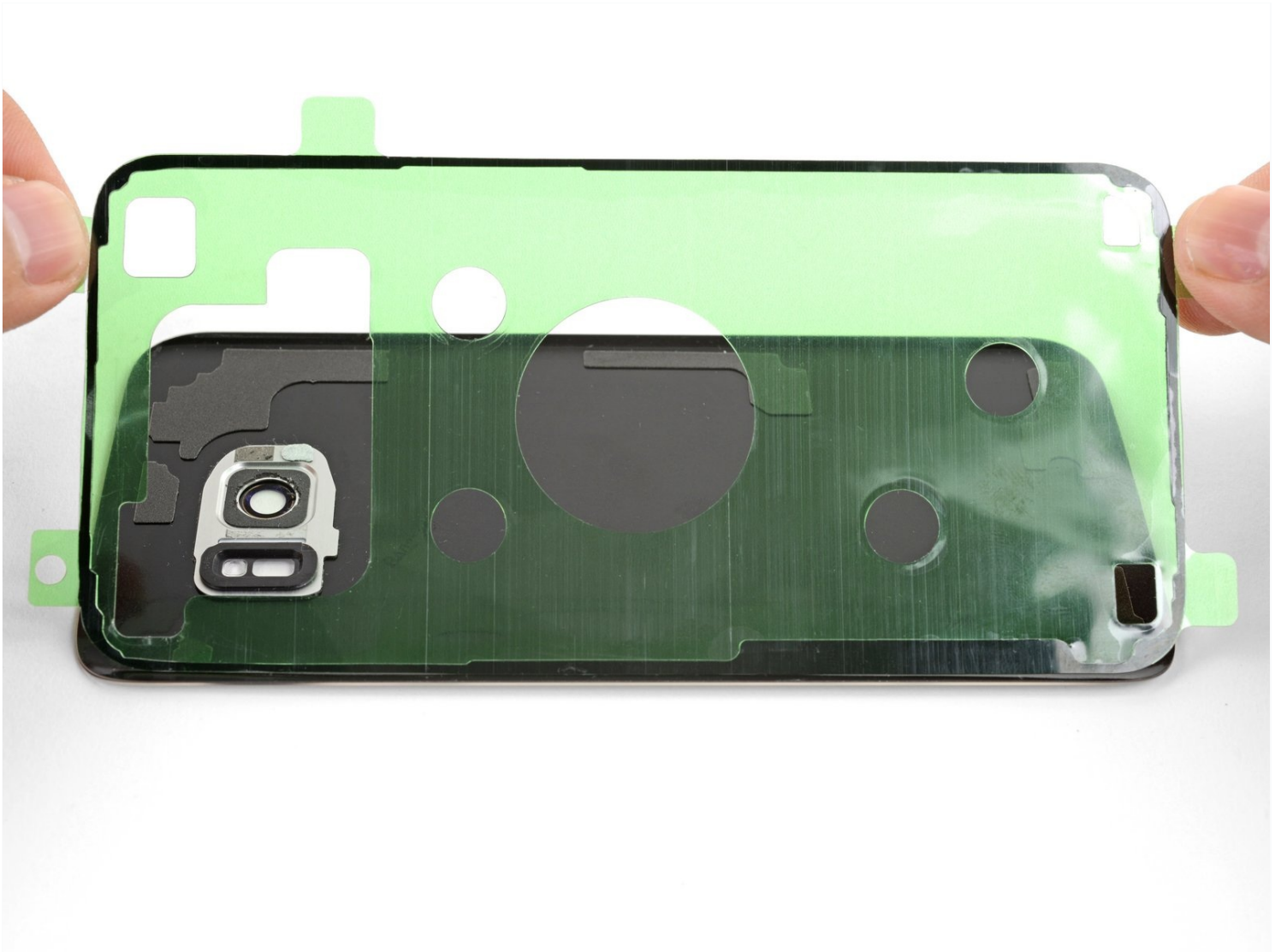




# How to Apply Custom-cut Adhesive Strips

Follow this guide to apply custom-cut adhesive...

Written By: Arthur Shi



# INTRODUCTION

Follow this guide to apply custom-cut adhesive to your device. The adhesive could be for a screen, back cover, battery, etc. Read through the entire guide before applying any adhesives to familiarize yourself with the process.

**Note:** If your device's repair guide has specific adhesive instructions, use those during your repair instead.

Achieving guaranteed IP (ingress protection) ratings after opening a device requires large, specialized equipment. This guide offers tips and tricks to get the best seal possible in a household setting.

It's important to note that not all devices nor adhesives are the same. Some methods may work better or worse depending on your device and how well you reapply adhesive. In most cases, the seal won't be as good as the factory original, so take care not to expose your device to extreme conditions after a DIY repair.

For Samsung Galaxy S phones, [follow this guide instead](#).

For iPhones, [follow this guide instead](#).

For iPads, [follow this guide instead](#).

If you are using general Tesa adhesives, [follow this guide instead](#).

---

## TOOLS:

[Spudger](#) (1)

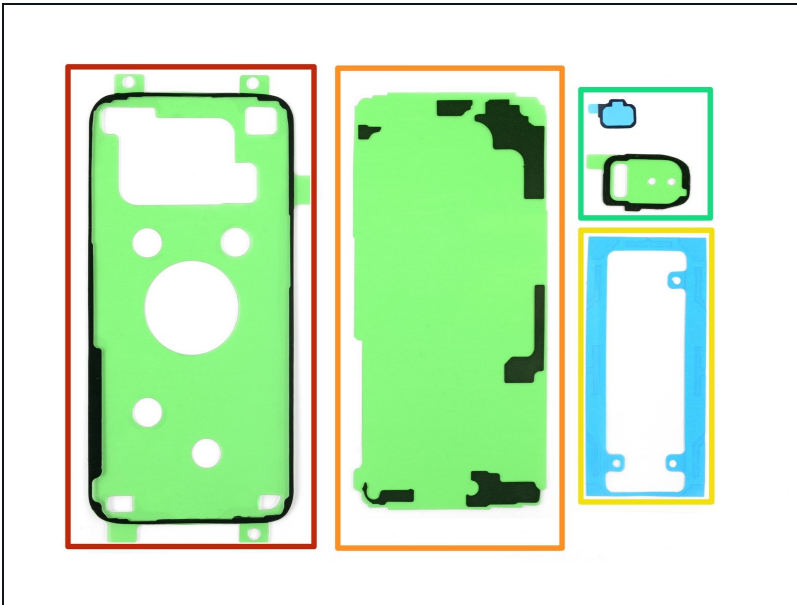
[iFixit Opening Tool](#) (1)

[Tweezers](#) (1)

[Isopropyl Alcohol](#) (1)

---

## Step 1 — Identify the adhesive strips



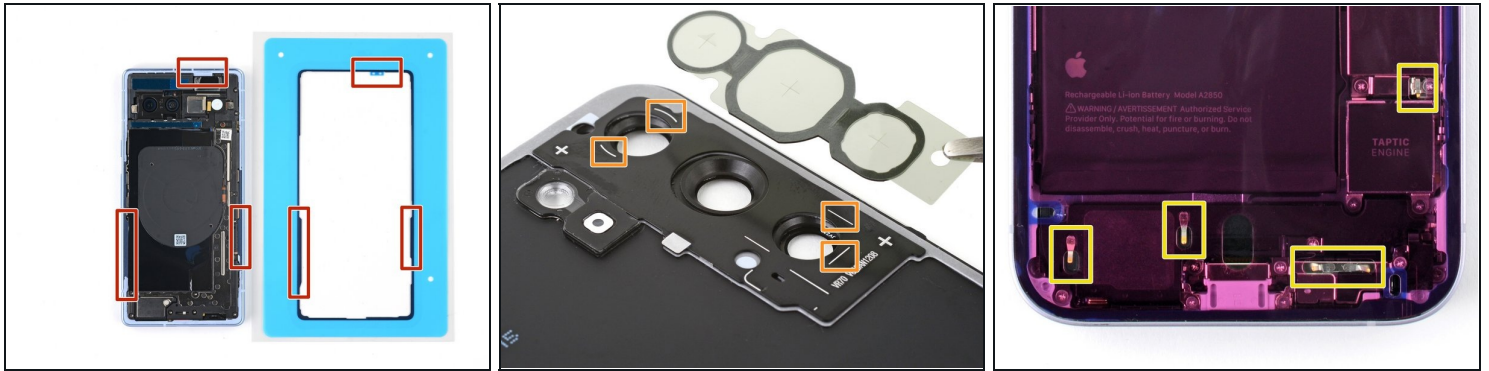
- Look over your pre-cut adhesive strips and figure out what they are used for.
- ① Here are some common adhesives used in a phone repair, and examples of what they may look like:
  - Screen or back cover adhesives—usually the shape of the device
  - Back cover support adhesives—these will match the contours of components pressed against the back cover
  - Battery adhesives—normally a rectangular perimeter roughly the shape of the phone's battery
  - Component adhesives—they will be contoured to match the various components such as cameras and fingerprint sensors they are designed for
- ① You usually want to apply the screen or back cover adhesives last. Be sure to apply all component adhesives beforehand, and if possible, test your repair before sealing up the device.

## Step 2 — Prepare the surface



- ① To ensure a good adhesive bond, both your device and part need to be thoroughly cleaned. This may take some time, but the results are worth the effort.
- Remove large chunks of adhesives with your fingers, spudger, plastic opening tool, or tweezers.
  - ⚠ Don't use metal tools if you're cleaning display panels or glass covers, as the tools may scratch the surface.
- Use adhesive remover or isopropyl alcohol (>70%) to remove residue from metal surfaces. Wipe in one direction with a lint-free cloth or coffee filter until all the adhesive residue is gone.
- ① While isopropyl alcohol is generally safe to use on electronics, they will dissolve certain foam adhesives. Be careful to contain the alcohol when cleaning.
- ① Allow the alcohol to completely evaporate from the device before reassembly.

### Step 3 — Orient the adhesives



- ① Custom-cut adhesive strips are shaped such that they install onto a device in only one way. When orienting your adhesive, look for distinct cutouts or markings that hint at how to place the adhesive:
  - Cutouts for components or liner pull-tabs in the frame
  - Alignment markings outlining the desired position
  - Holes for spring contacts or cameras
- ① Most adhesive strips will have a neutral/clear liner covering one side and a colored liner covering the other. **You'll be peeling the neutral/clear liner first and applying the exposed adhesive to its corresponding surface.**
- ① For example, if your back cover adhesive's clear liner faces the phone frame, you'll stick the adhesive strip to the frame first. If the clear liner faces the back cover, you'll stick the strip to the cover first.
- ① If the adhesive comes in pieces, match each piece to the device by its contours and [set them next to your device](#).
- ① To ease the process of removing liners without losing alignment, you can align the strip to its intended position on the device, [then tape one edge down to hold the strip in place](#).

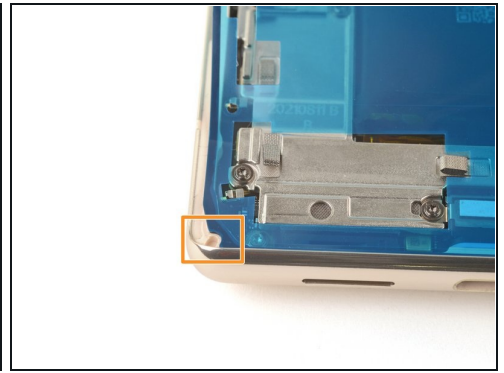
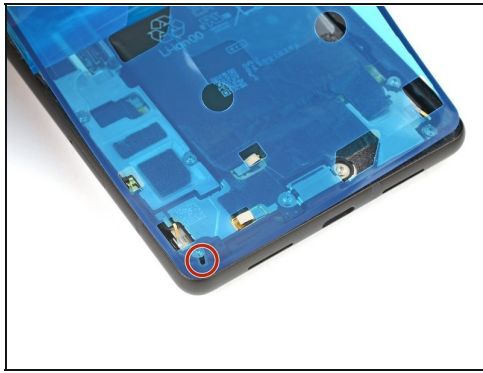
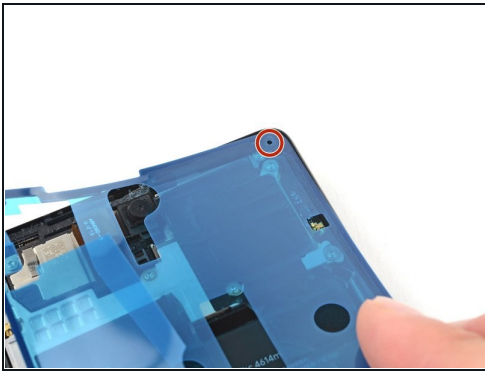
## Step 4 — Remove the adhesive liner



- Once you have a good idea how the adhesive strip fits on the surface, peel the neutral/clear liner off.
- ① If you're applying a back cover or screen adhesive and it comes with extra material in the center, you may need to remove it before applying the adhesive.
  - Carefully peel away the center portion of both the liner and adhesive layers, [starting with the cutout \(if present\)](#).
  - Peel off and discard the remaining neutral/clear liner, exposing the adhesive underneath.



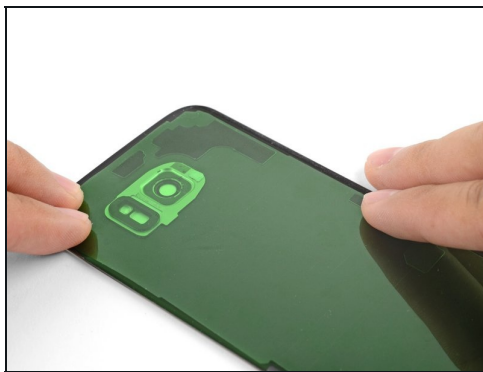
## Step 5 — Apply the adhesive



⚠ Be very careful as you align the adhesive! The adhesive is very sticky and deforms easily. Once it touches a surface, you can't reposition it—you'll likely need to start over with a new strip.

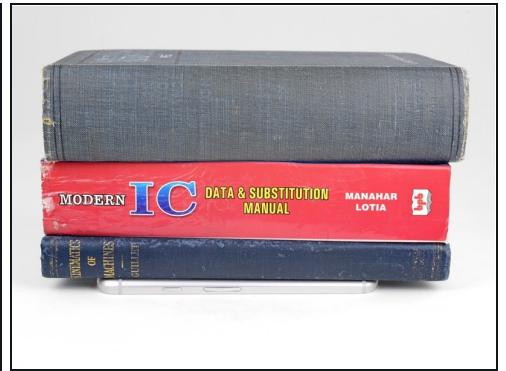
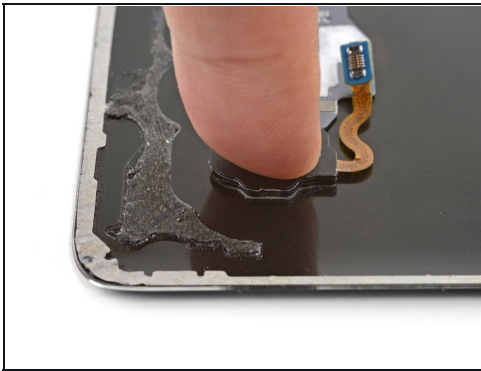
- As you position the adhesive, look for alignment holes that line up with physical holes in the frame of your device.
- Some adhesives feature unique cutouts in the corners that reflect holes or features in the frame.

## Step 6



- Hold the exposed strip by its tabs and carefully line up a long edge of the adhesive to the edge of the device.
- Set the adhesive onto the surface and press it firmly onto the surface with your fingers.
- Peel away the colored liner from the adhesive strip to expose the remaining adhesive side.

## Step 7



- Hold the part to your device firmly for 20–30 seconds.

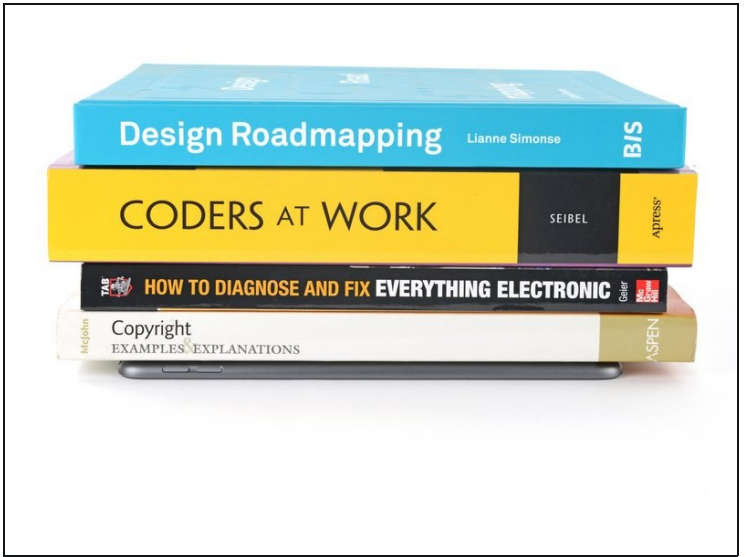
## Step 8 — Further strengthen the adhesive bond



- ① Once you've installed your part or sealed up your device, you can strengthen the bond by heating up the adhesive.
- ① Soft adhesives, which are usually messy and hard to clean, benefit from a reheat.
- ① Harder adhesives that resemble tape may not benefit as much, but the heat can help the adhesive fill in gaps.
- Use a [hair dryer](#), [iOpener](#), or [heat gun](#) to lightly heat the part or closed device in the areas where the new adhesive was applied.



## Step 9



- ① Follow the remaining steps if you're securing a new screen or back cover.
- ① If your device has an uneven surface (often a camera bump), **skip to the next step**.
- Lay your device on a flat surface and stack heavy objects on it. Multiple large books work well.
- Keep the objects stacked on your device for at least a few hours to allow the adhesive to settle and bond. Ideally, leave them in place overnight.

## Step 10 — Accommodate uneven back covers



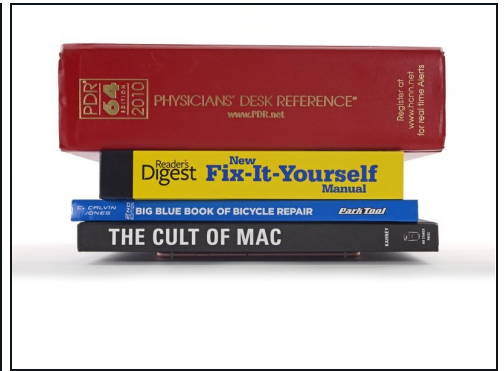
- ① Most modern phones and tablets have prominent protrusions around the cameras. If you're securing a new screen or back cover, you must account for these uneven surfaces.
- ① The remaining steps show three ways to apply even pressure across the entire device.

## Step 11



- If your device came in a box that has cutouts for the protrusions in the back cover, use it to allow the device to sit flat.
  - Place your device in the box so it sits with even pressure all around the back cover.
- Stack heavy objects on the device and leave them in place for at least a few hours to allow the adhesive to settle. Ideally, leave them in place overnight.

## Step 12



- ① Alternatively, you can stack small objects around the back to level out the height of the cameras.
- Lay strips of tape around the perimeter of your device to protect it from scratches.
  - Stack coins or similar objects around the perimeter so they're roughly equal to the height of the protrusions in the back cover.
  - Place heavy objects, such as multiple books, on top of the coins and leave them for a few hours. Don't use any valuable books, as the coins might leave an impression.

## Step 13 — Use screen vise clamps



- Lastly, [screen vise clamps](#) are a great way to secure screens and back covers. [Follow this guide](#) to use them on your device.

---

If properly applied, the adhesive should work reliably for a long time.

The repair may not restore the device's water resistance. Be careful not to expose the device to liquids.