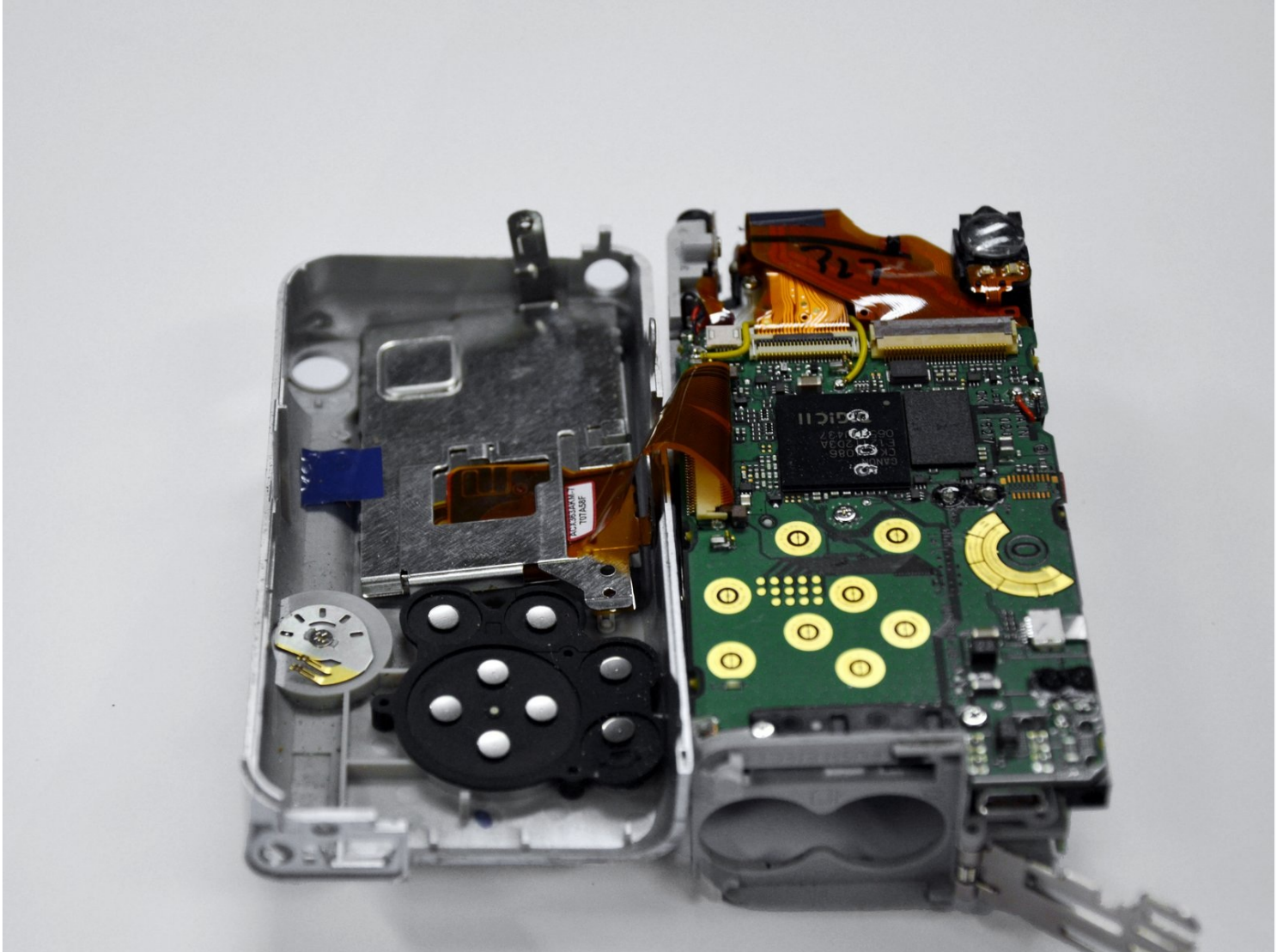




# Canon PowerShot A460 Back Casing Replacement

This guide involves taking off the entire...

Written By: Stephanie Friend



# INTRODUCTION

This guide involves taking off the entire casing of the Canon PowerShot A460 camera. It will prepare the user to perform more complicated and problem-specific repairs.

---

## TOOLS:

Phillips #00 Screwdriver (1)

---

### Step 1 — Battery



- Slide the switch on the battery cover labeled "CARD/BATT. OPEN." to the right.
- While still holding the switch, pull the cover down, allowing it to release and open.

## Step 2



- Tilt the camera slightly to allow the batteries to fall out.

## Step 3



- Press on and release the memory card to eject it.

## Step 4 — Front Casing



- Unscrew the 5mm Phillips #00 screw from the bottom of the camera.
- ☑ Make sure to keep the different size screws organized to make reassembling the camera simpler.

## Step 5



- Unscrew the three 2mm Phillips #00 screws that are located on the bottom of the camera.

## Step 6



- Remove the 4mm Phillips #00 screw that is located on the left side of the camera, if the display screen is facing you.

## Step 7



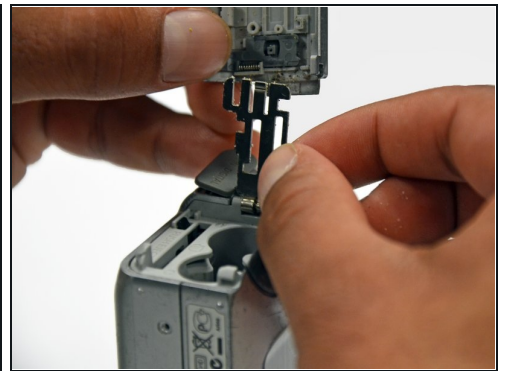
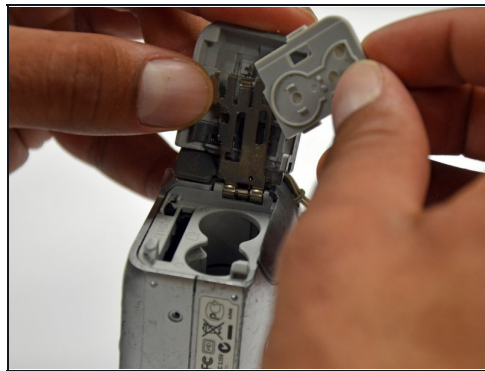
- Take out the 4mm Phillips #00 screw under the rubber flap on the right end of the camera.

## Step 8



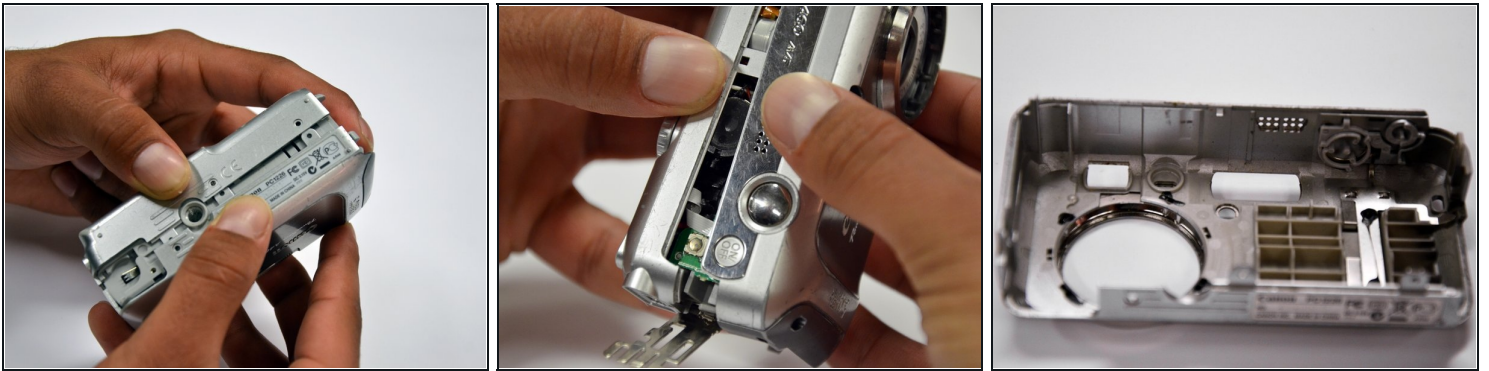
- Remove the second battery cover on the bottom of camera.
- Take the silver battery out of the camera.

## Step 9



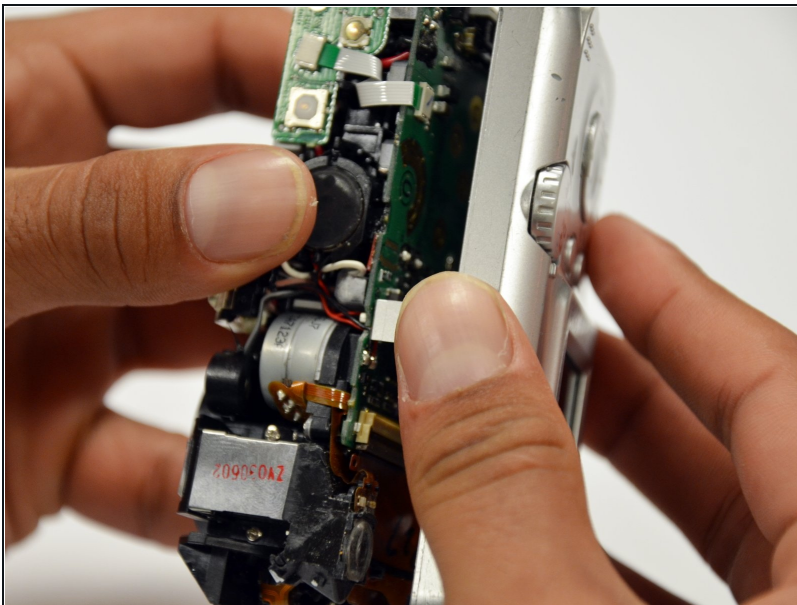
- Remove the 4mm Phillips #00 screw on the inside of the flap that hides the battery and memory card slots.
- Remove the light grey, plastic piece.
- Remove the plastic portion of the battery flap cover. The metal piece will remain attached.

## Step 10



- Slightly pull on each side of the camera. It should loosen up and come apart.
- If it does not pull apart right away, use a little more force.
- Do not give up!

## Step 11 — Back Casing



- Remove the back case of the camera by pulling from the top.

**⚠ Be careful when pulling off the case. There is a delicate gold ribbon connecting the bottom of the camera to the back case.**

To reassemble your device, follow these instructions in reverse order.