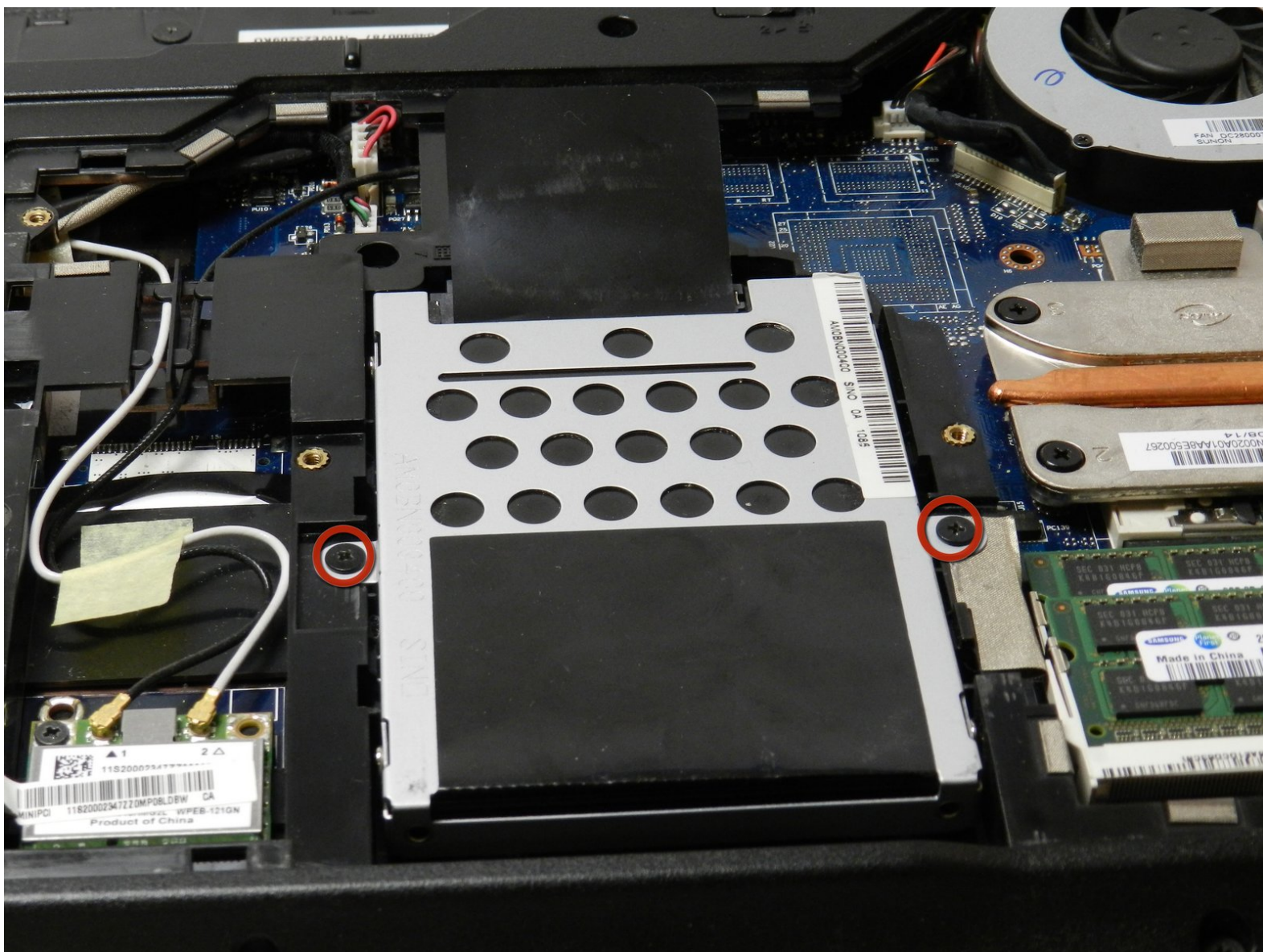




Lenovo Essential G560 Hard Drive Replacement

This guide will go through the steps necessary to remove and replace the hard drive of the Lenovo G560, which allows hard drives of a 2.5" form-factor.

Written By: Dennis Wong



This document was generated on 2021-05-13 11:47:22 AM (MST).

INTRODUCTION

The hard drive is likely to malfunction when dropped or put under a lot of stress. If the computer won't boot and is having hard disk/hard drive reading errors, follow this guide to replace it.



TOOLS:

- [Phillips #2 Screwdriver](#) (1)



PARTS:

- [1 TB SSD / Upgrade Bundle](#) (1)

Step 1 — Battery



- Turn off the computer.
- Disconnect the charging cable from the computer.
- ⚠ Failure to unplug the cable could result in electric shock.
- Flip the computer upside down.

Step 2



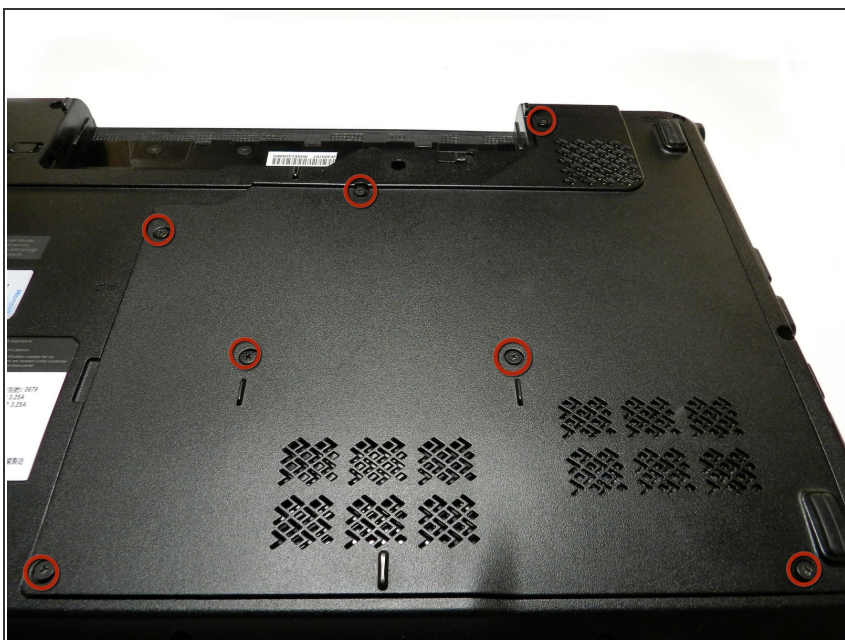
- Locate the two switches that lock the battery. Push the right-hand switch outward into the "unlocked" position.

Step 3



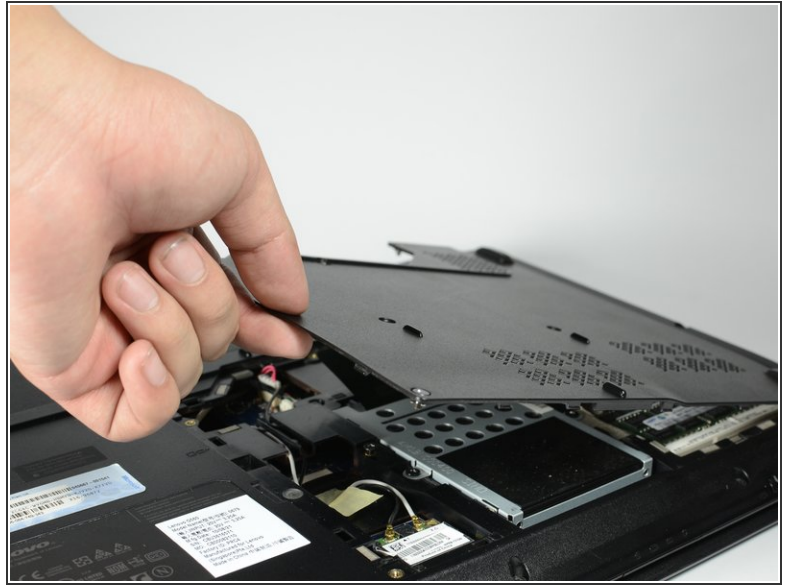
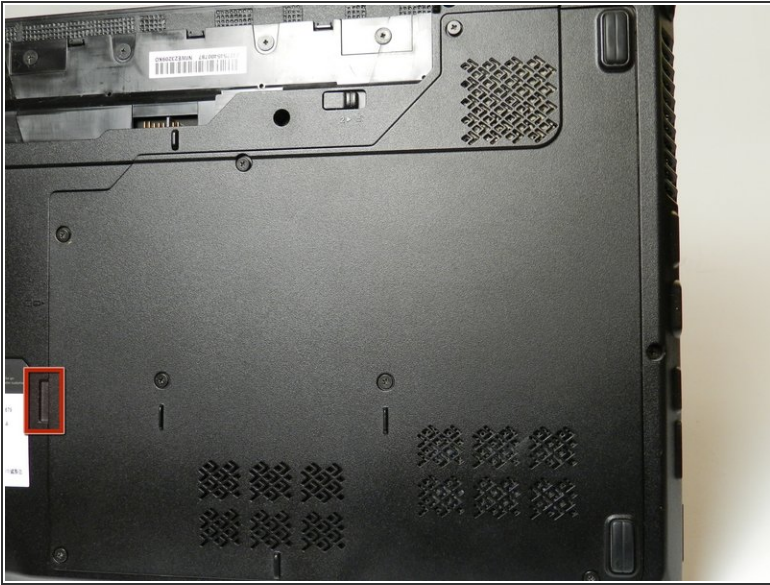
- Push and hold the left hand switch outward in the "unlocked" position, then gently slide the battery away from the computer.

Step 4 — Back Panel



- Remove the seven 5.3 mm Phillips #1 screws holding the back panel in place.

Step 5



- Pull the back panel off using the highlighted tab. The tab should give you enough leverage to pull the panel off smoothly.

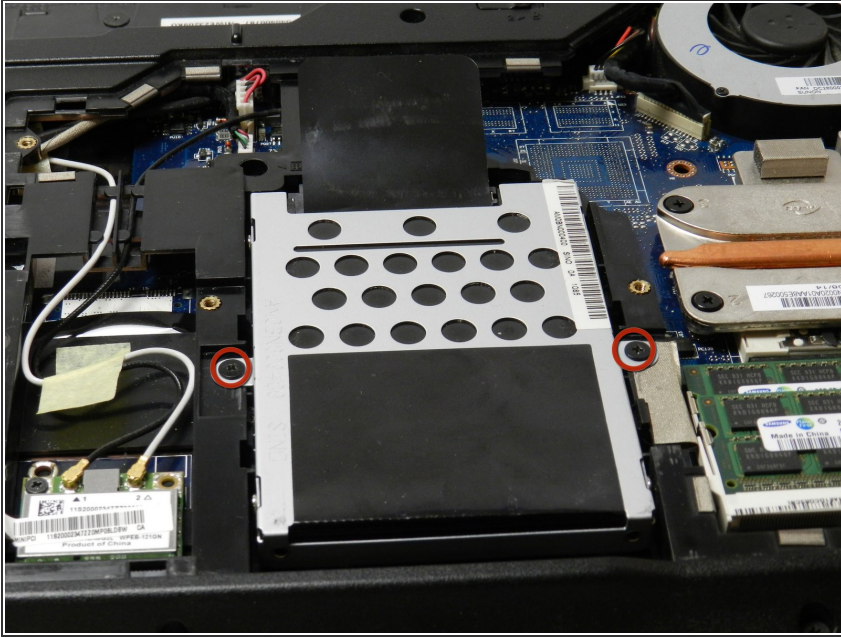
⚠ If the back panel is difficult to remove and feels like it is going to break, DO NOT force it. Check to confirm that all the screws are removed before attempting again.

Step 6



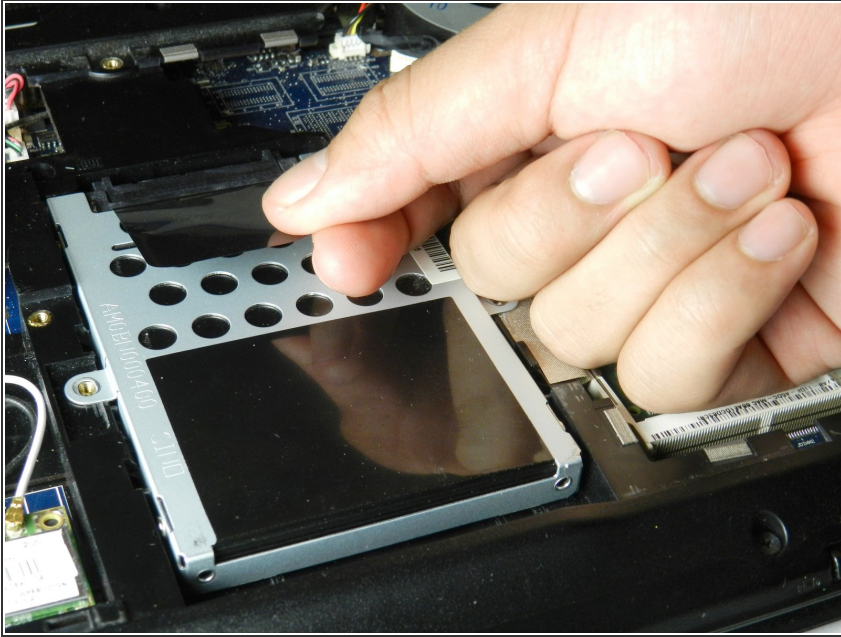
- The computer should be open with many of the internal components shown. You can now access the hard drive, the RAM, and the keyboard.

Step 7 — Hard Drive



- Remove the two 5.33 mm Phillips #1 screws holding the hard drive in place.
- ⚠ Be careful with these screws, as they can be stripped or lost easily.

Step 8



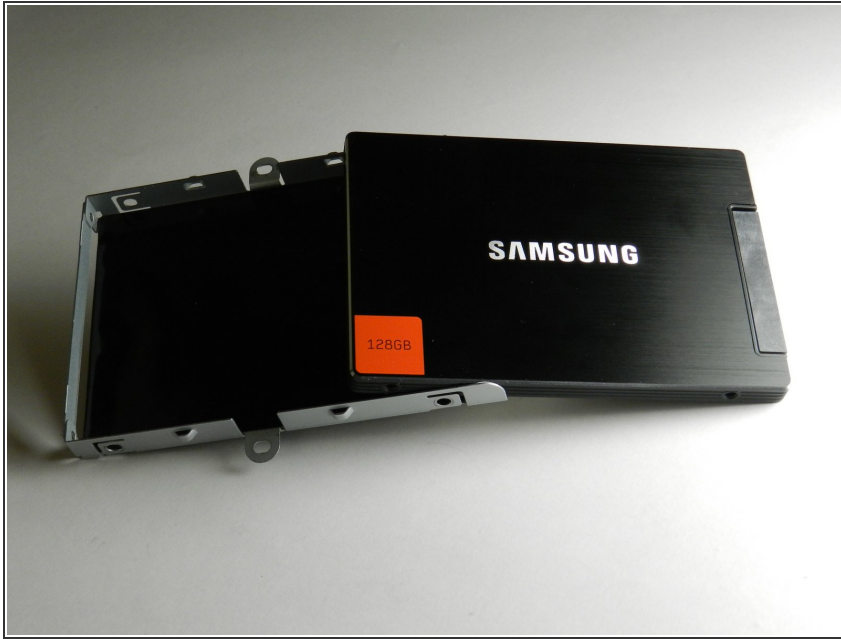
- To remove the hard drive from the computer, grab the black tab attached to the hard drive and pull the tab downwards toward the bottom of the laptop.
- ⓘ When installing the hard drive, make sure the hard drive label faces down.

Step 9



- Unscrew the four 5.2 mm Phillips #1 screws. There are two on each side of the drive holding it in the drive bay.

Step 10



- Pull the drive out of the bay. If all the screws were removed correctly, it should simply slide out.

To reassemble your device, follow these instructions in reverse order.