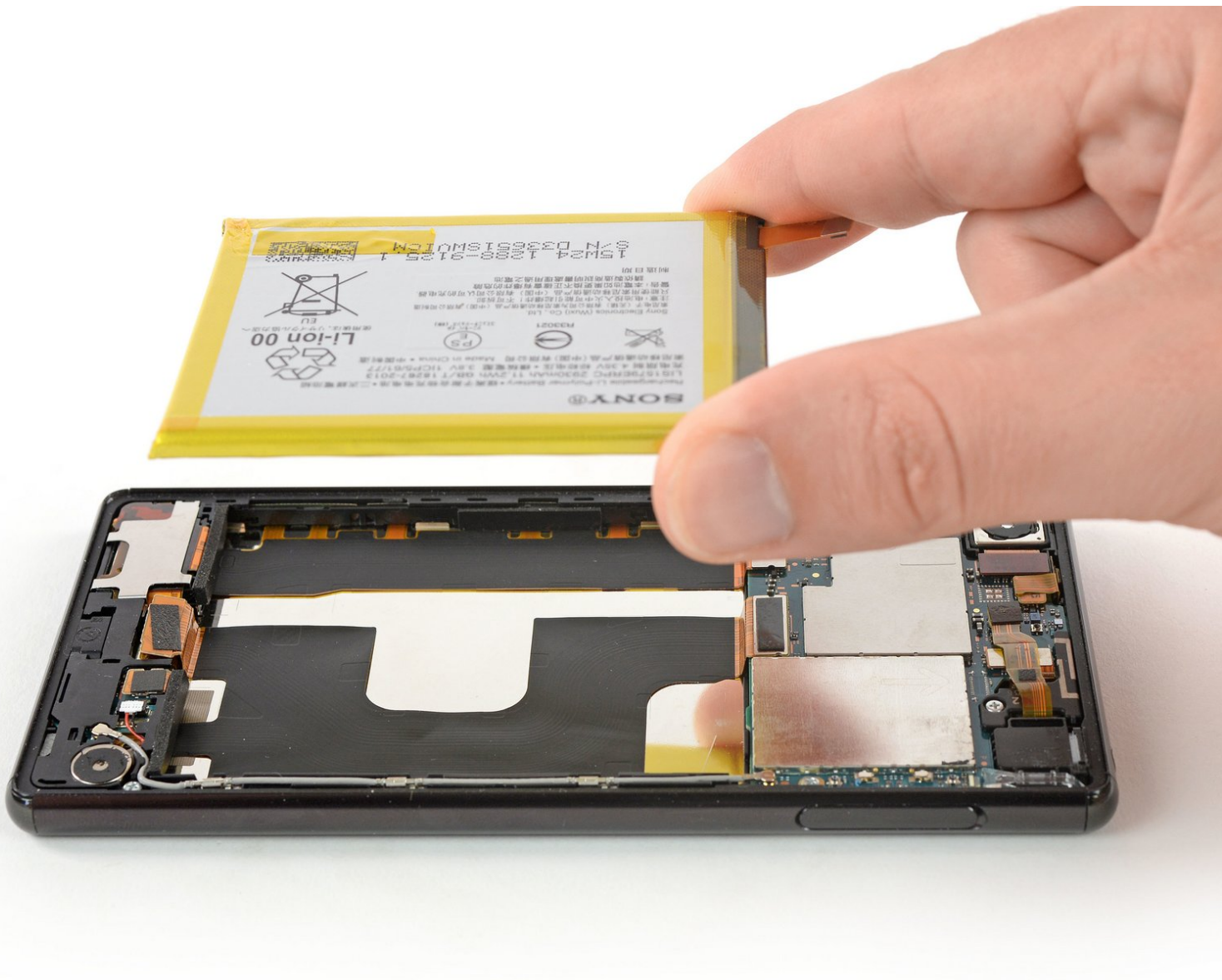




Sony Xperia Z4 Battery Replacement

This guide shows you how to remove and replace a worn-out or dead battery in your Sony Xperia Z4.

Written By: Dominik Schnabelrauch



INTRODUCTION

Use this guide to replace a worn-out or dead battery in your Sony Xperia Z4.

Opening the Sony Xperia Z4 will **damage the waterproof seals** on the device. If you do not replace the adhesive seals, your phone will function normally but will **lose its water protection**.

If your battery is swollen, [take appropriate precautions](#). **For your safety, discharge your battery below 25% before disassembling your phone.** This reduces the risk of a dangerous thermal event if the battery is accidentally damaged during the repair.

You'll need replacement adhesive to reattach components when reassembling the device.



TOOLS:

- [iOpener](#) (1)
- [iFixit Opening Picks set of 6](#) (1)
- [Suction Handle](#) (1)
- [ESD Safe Tweezers Blunt Nose](#) (1)
- [Spudger](#) (1)



PARTS:

- [Sony Xperia Z4 Rear Cover Adhesive](#) (1)
- [Sony Xperia Z4 Battery](#) (1)

Step 1 — Back Cover



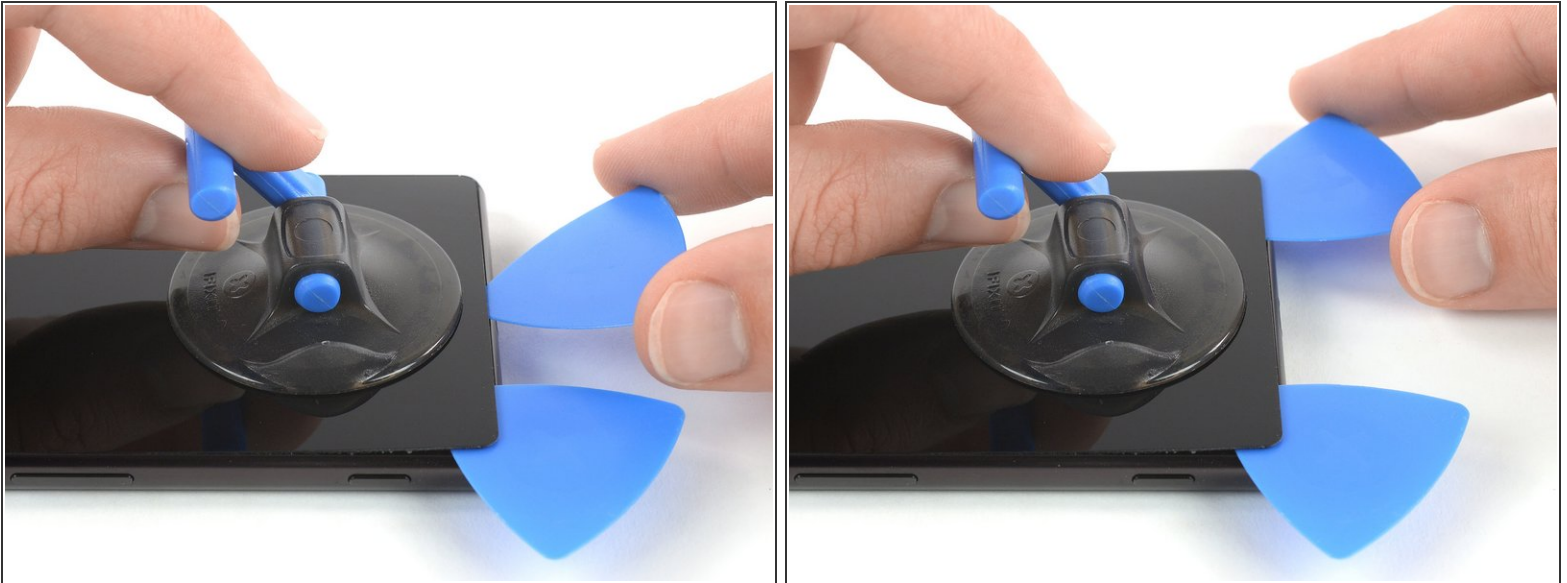
- Before you begin, switch off your phone.
- Apply a [heated iOpener](#) to the back of the phone to loosen the adhesive beneath the back cover. Apply the iOpener for at least two minutes.

Step 2



- Secure a suction handle to the bottom of the back cover, as close to the edge as possible.
- Lift the back cover with the suction handle to create a small gap between the cover and the frame.
- Insert an opening pick into the gap.
 - ❗ If you have trouble, apply more heat to further soften the adhesive. Follow the iOpener instructions to avoid overheating.
- Slide the opening pick to the bottom left corner.

Step 3




- Insert a second opening pick and slide it to the bottom right corner to cut the adhesive.
- Leave the opening picks in place to prevent the adhesive from resealing.

Step 4



- Insert a third opening pick at the bottom left corner.

 In the next few steps whilst cutting around the rear camera make sure you only use the tip of the opening pick to avoid smearing the lens or damaging the camera.

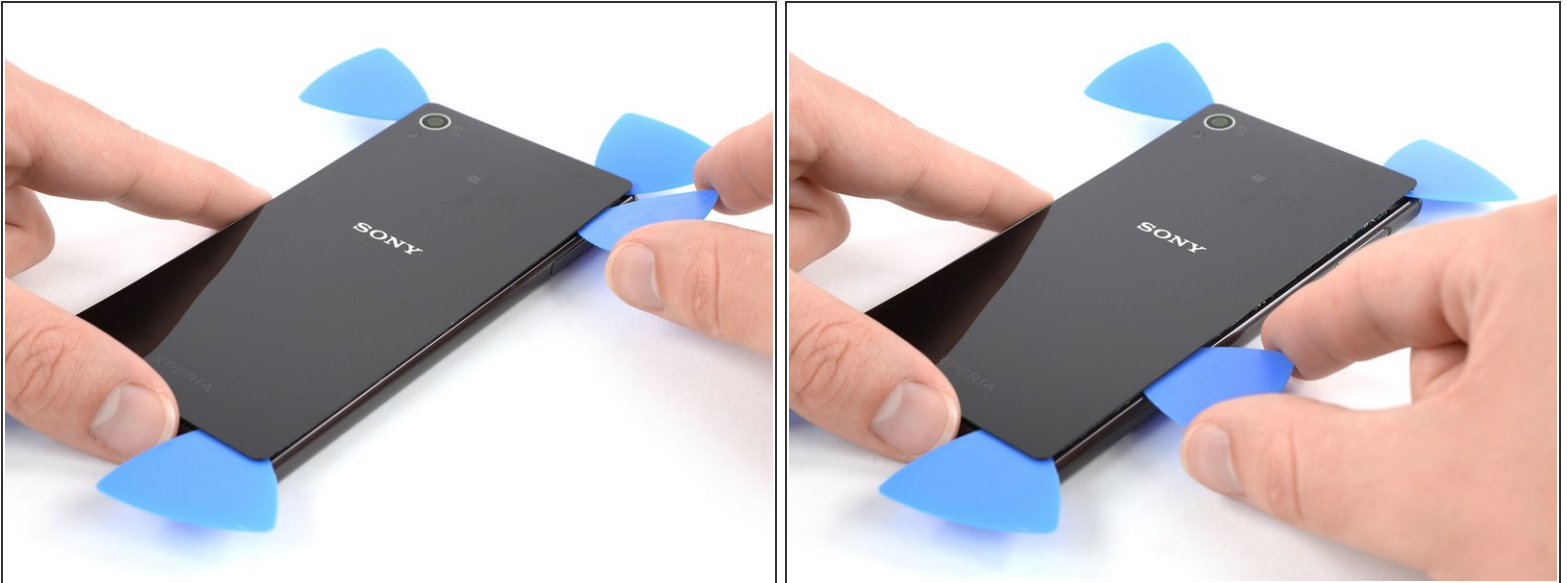
- Start to slide the tip of the opening pick from the bottom left corner along the side of the phone to cut the adhesive.
- Leave the opening pick in its place at the top left corner to prevent the adhesive from resealing.

Step 5



- If the adhesive becomes hard to cut it most likely cooled down. [Use your iOpener](#) to reheat it.
- Insert a fourth opening pick under the top left corner of the back cover.
- Slide the opening pick along the top edge of the phone to cut the adhesive.
- Leave the opening pick in the top right corner to prevent the adhesive from resealing.

Step 6



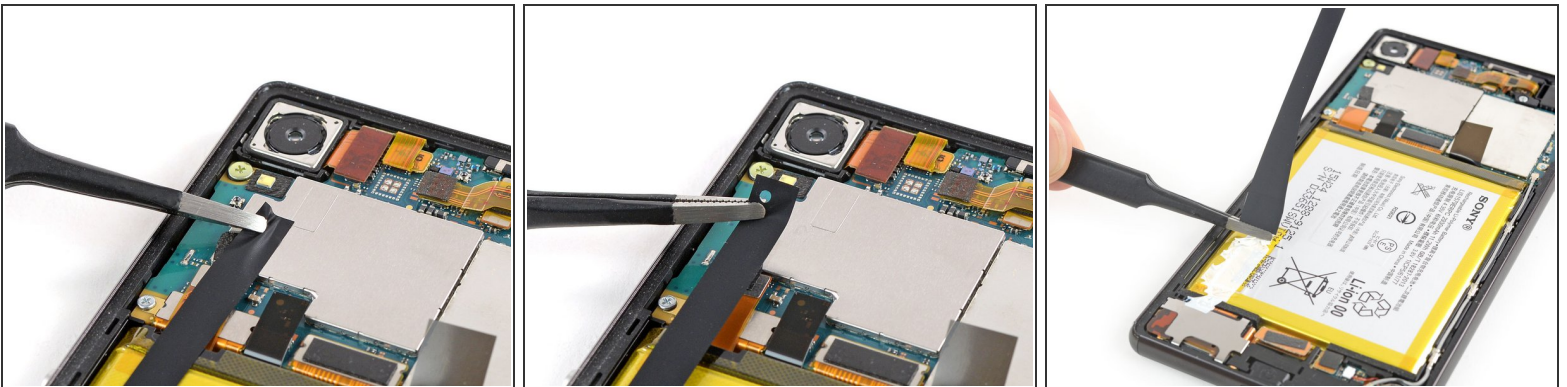
- Insert a fifth opening pick at the top right corner of the phone.
- Slide the opening pick along the right side to cut the remaining adhesive.

Step 7



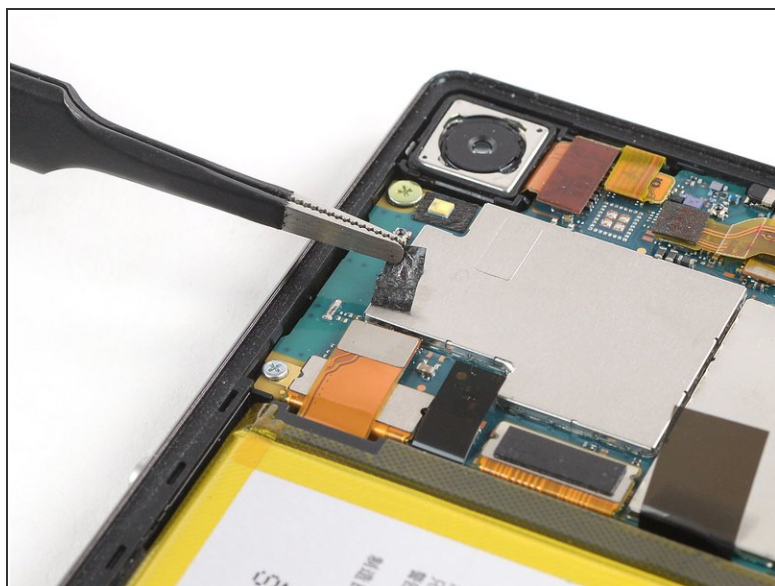
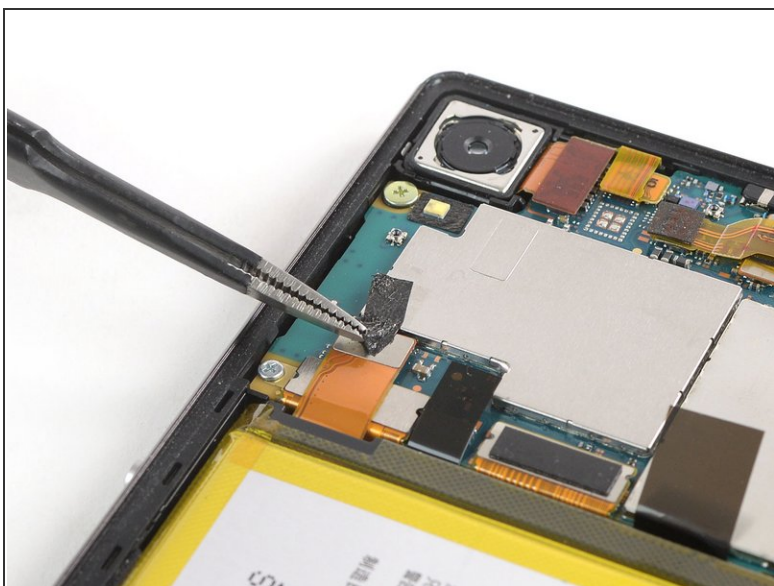
- Lift and remove the back cover.
- ✦ After installing the back cover, apply strong, steady pressure to your phone for several minutes to help the adhesive form a good bond, such as by placing it under a stack of heavy books.

Step 8 — Battery Disconnect



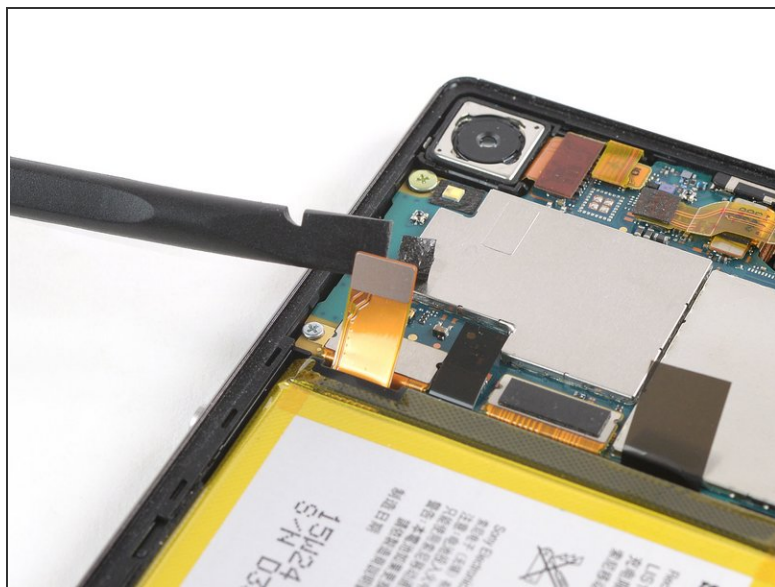
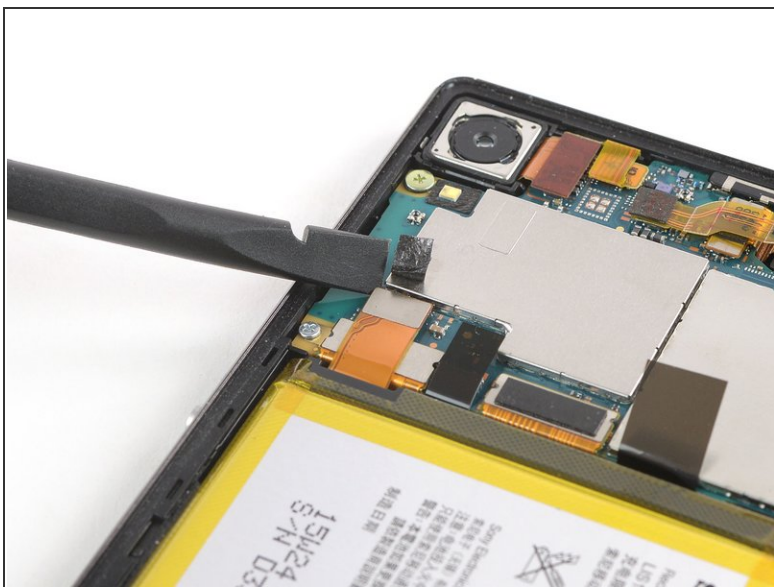
- Use a pair of tweezers to carefully peel the adhesive strip off the mother board and the battery and remove it.

Step 9



- Use a pair of tweezers to peel the black adhesive strip off the battery connector and fold it out of the way.

Step 10



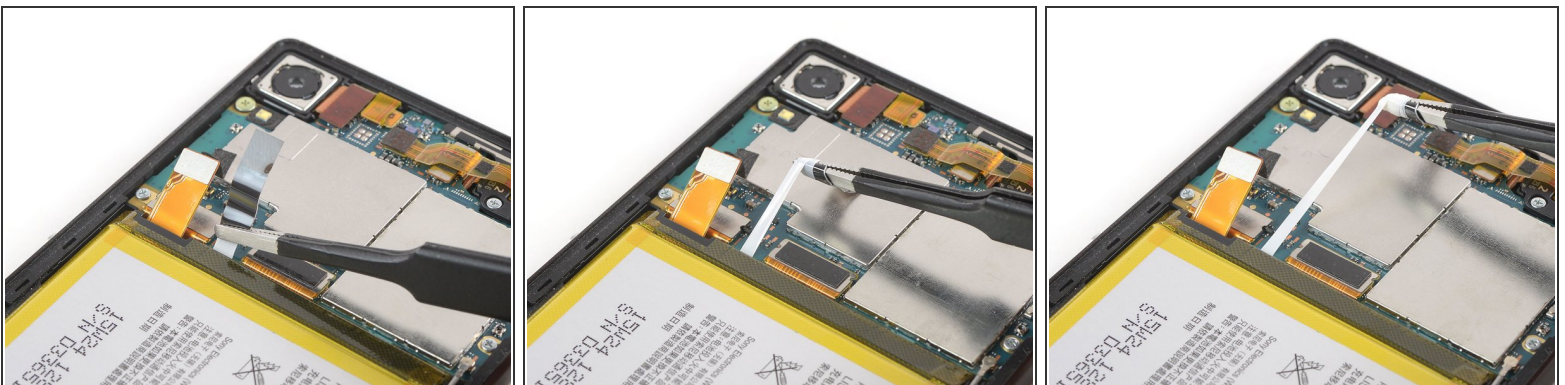
- Use a spudger to pry up and disconnect the battery connector.

Step 11 — Battery



- Use a pair of tweezers and grab the pull tab at the top right corner of the battery.
- Pull out the adhesive strip with a pair of tweezers.
- ❗ Make sure you pull out the strip in a slow and steady motion and in a flat angle. To prevent the adhesive strip from ripping, it is helpful to twist the strip around the tweezers.
- ❗ In case one of the adhesive strips rips and it's not possible to pull it out completely, you can use high isopropyl alcohol (>90%) and/or a [heated iOpener](#) to loosen the adhesive. After the adhesive is soft enough use a prying tool such as an opening pick, a plastic/playing card or a spudger to carefully pry out the battery.

Step 12



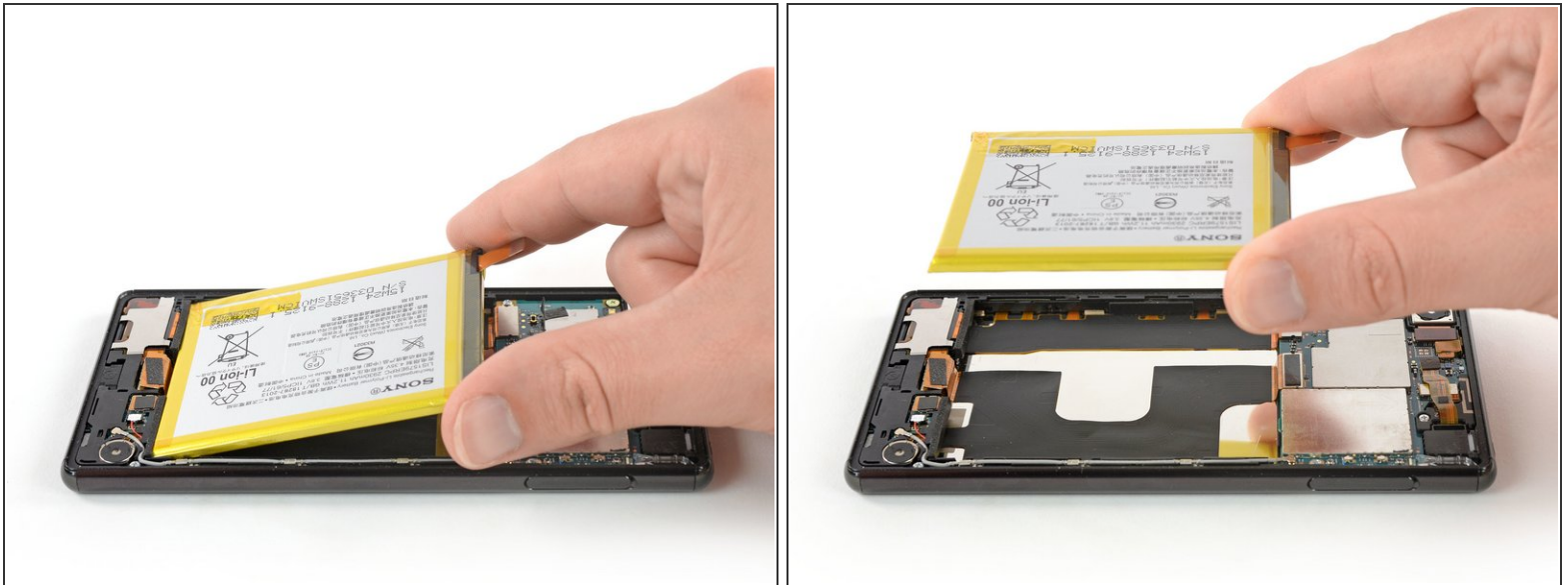
- Repeat the previous process with the adhesive tab next to the battery flex cable.

Step 13



- Use an opening pick to pry the battery out of its recess until you can get a good grip.

Step 14



- Remove the battery.

⚠ Do not reinstall a damaged or deformed battery, as doing so is a potential safety hazard.

- ☑ Remove any remaining adhesive from the midframe, and clean the glued areas with isopropyl alcohol and a lint-free cloth before applying new adhesive.

If possible, turn on your phone and test your repair before installing new adhesive and resealing the phone.

Secure the new battery with pre-cut adhesive or double-sided adhesive tape. In order to position it correctly, apply the new adhesive into the phone at the places where the old adhesive was located, not directly onto the battery. Press the new battery firmly into place.

To reassemble your device, follow these instructions in reverse order. Apply new adhesive where necessary after cleaning the relevant areas with isopropyl alcohol (+90%).

For optimal performance, calibrate your newly installed battery : Charge it to 100%, and keep charging it for at least two more hours. Then, use it until it shuts off due to low battery. Finally, charge it uninterrupted to 100%

Take your e-waste to an [R2 or e-Stewards certified recycler](#).

Repair didn't go as planned? Try some [basic troubleshooting](#), or ask our [Answers community](#) for help.

