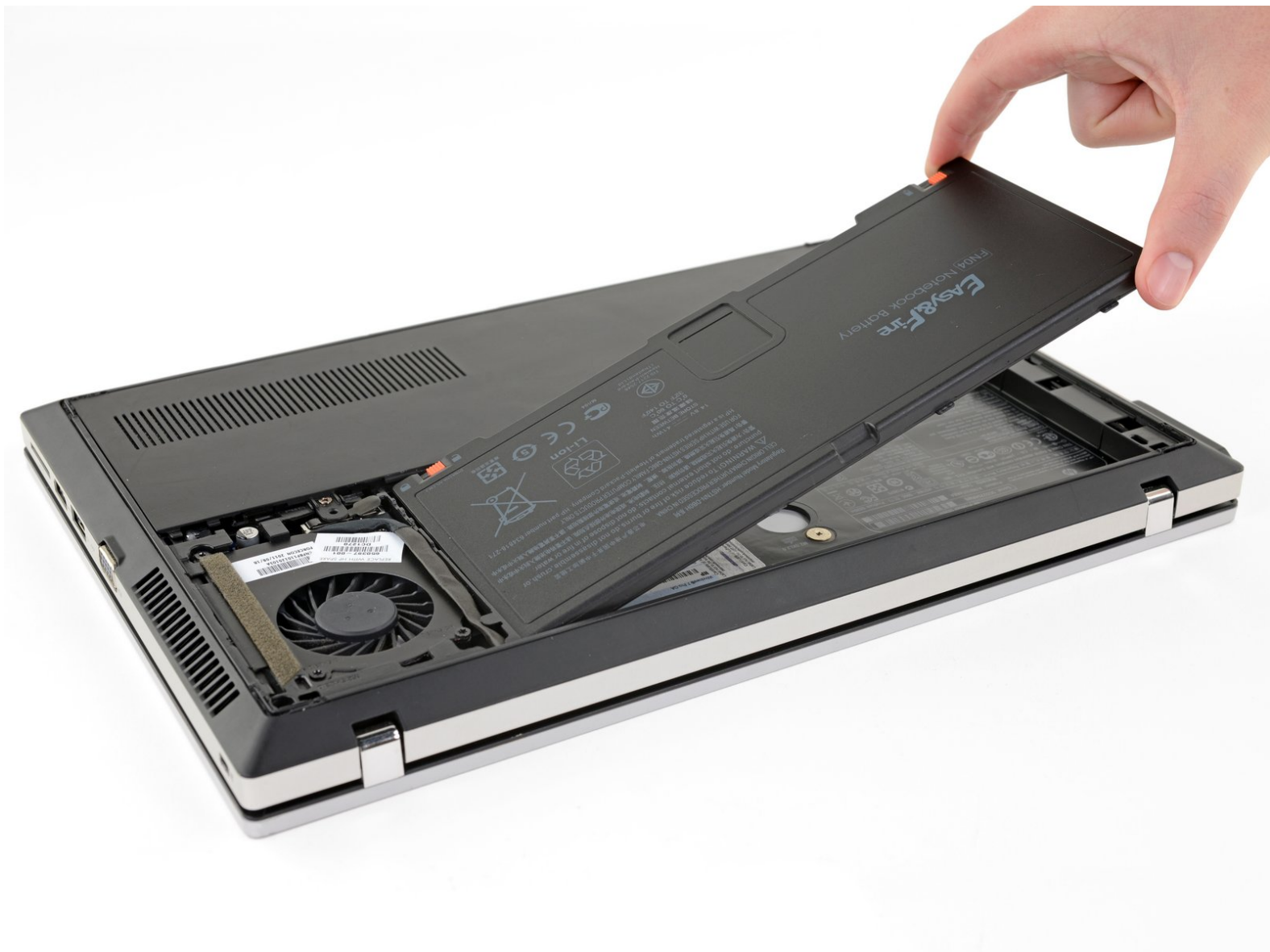




HP ProBook 5330m Battery Replacement

Remove and replace a dead or worn battery in an HP ProBook 5330m notebook computer.

Written By: Taylor Dixon



INTRODUCTION

This guide will show you how to remove and replace a dead or worn battery in an HP ProBook 5330m notebook computer.

If your battery is swollen, [take appropriate precautions](#).



TOOLS:

- [Spudger](#) (1)



PARTS:

- [HP FN04 Replacement Laptop Battery](#) (1)

Step 1 — Battery Cover



- The battery cover is locked in place by a switch on the bottom of the laptop.
- To release the lock and open the battery cover, slide the switch in the direction of the arrow next to the battery icon.
- ⓘ As you slide the switch, the battery cover should pop up.

Step 2



- Lift up and remove the battery cover.

Step 3 — Battery



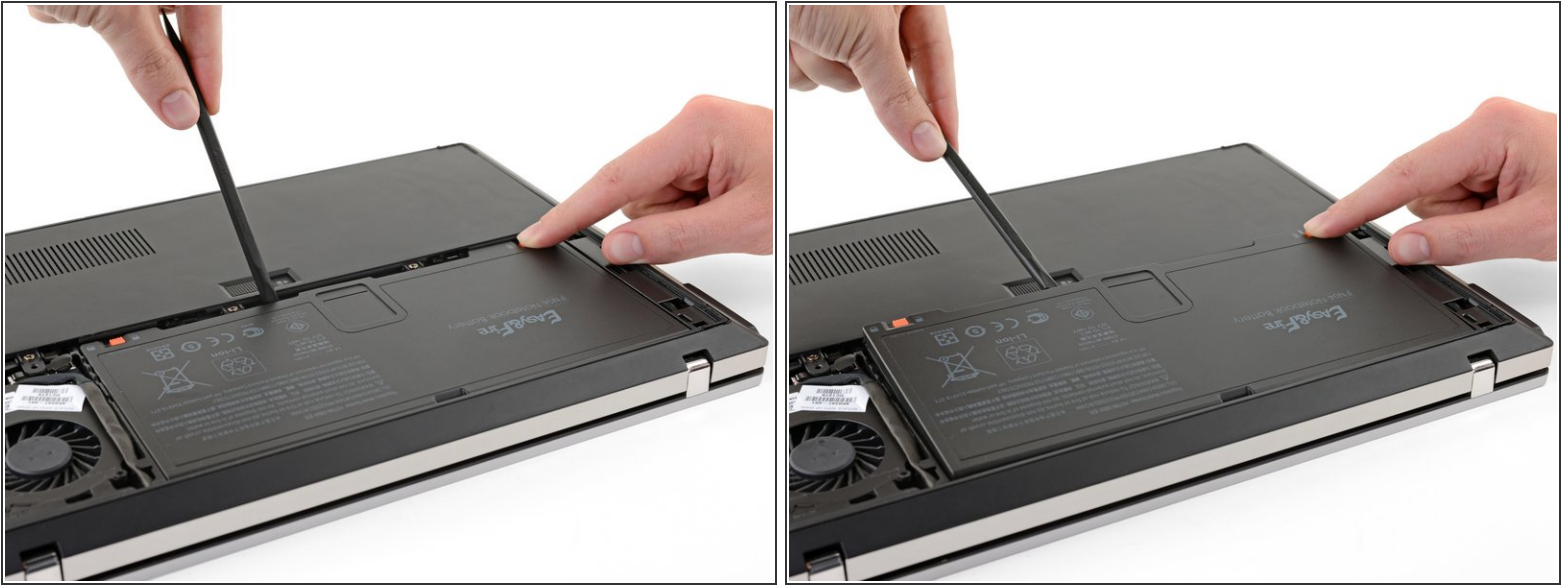
- i** Two switches lock the battery in place. To remove the battery you will need to slide both switches toward the center of the battery.
- The switch [marked with a padlock symbol](#) moves back and forth freely.
 - The switch [with the battery symbol](#) on the other side of the battery is spring loaded, so you will have to hold it open as you remove the battery.

Step 4



- Slide the switch with the padlock symbol toward the **unlocked** side.

Step 5



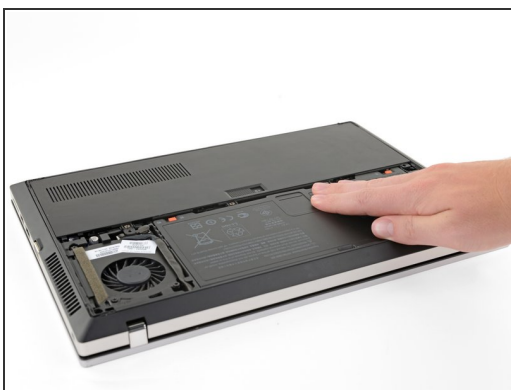
- Insert your finger or the flat edge of a spudger into the [small divot](#) along the edge of the battery just below the battery cover lock.
- Slide the spring-loaded switch with the battery symbol toward the center of the battery with one hand, while you pry the battery up with the other.
- ⓘ If you have correctly released both of the switches that hold the battery in place, **it should be very easy to pry up.**
- ⚠ Don't pry aggressively at the battery. If you can't hold the switch open while you pry, have a friend hold the switch while you lift out the battery.

Step 6



- Remove the battery.

Step 7



- ☒ To install your new battery, press it into place so that it lays flat, then slide the red switch with the padlock symbol back to the **locked** side.

To reassemble your device, follow these instructions in reverse order.

For optimal performance, calibrate your newly-installed battery: Charge it to 100% and keep charging it for at least 2 more hours. Then use your device until it shuts off due to low battery. Finally, charge it uninterrupted to 100%.

Take your e-waste to an [R2 or e-Stewards certified recycler](#).

Repair didn't go as planned? Check out our [HP ProBook](#) answers community for troubleshooting help.