



Samsung Galaxy S III Front-Facing Camera Replacement

Replace the Front-Facing Camera in your Samsung Galaxy S III.

Written By: Walter Galan



INTRODUCTION

Use this guide to replace the front-facing camera.



TOOLS:

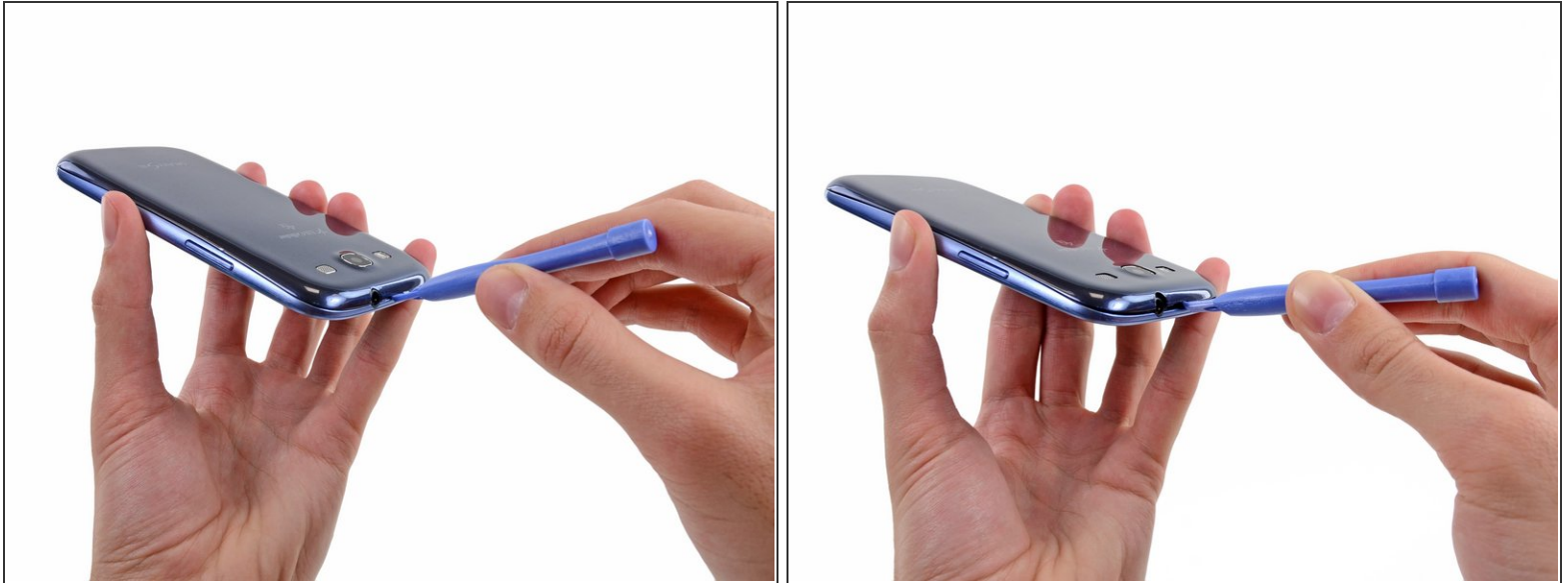
- [Phillips #00 Screwdriver](#) (1)
- [iFixit Opening Tool](#) (1)
- [Tweezers](#) (1)




PARTS:

- [Galaxy S III Front Camera](#) (1)

Step 1 — Rear Case



-  The following four steps can be accomplished without a plastic opening tool. However, it's recommended to use a tool to best avoid breaking any clips along the perimeter of the rear case.
- Insert a plastic opening tool or fingernail into the notch in the gap between the rear case and the rest of the phone, located at the top of the device.
 - Gently twist the opening tool to disconnect the clips securing the top of the rear case.

Step 2



- Slide the plastic opening tool left along the top edge and repeat the twisting motion to widen the gap between the rear case and the phone.

Step 3



- Continue to move the plastic opening tool around the perimeter of the top left corner, gently prying up along the rear case.

Step 4



- Pry along the top right side, and continue prying down the right side of the rear case.


Step 5



- Lift up and remove the rear case from the phone.
- i** You may need to peel the case up to separate it from any clips still holding it to the bottom of the phone.

Step 6 — Battery



 This step can be accomplished without the need of a plastic opening tool. Just use your finger if you want to.

- Wedge a plastic opening tool into the small notch above the battery.
- Pry the battery up out of its recess.

Step 7



- Remove the battery.

Step 8 — SIM Card



- Using your fingernail, push the SIM card slightly deeper into its slot, until you hear a click.
 - After the click, release the card and it will pop out of its slot.
- ☒ For reassembly, push the SIM card into the slot until it clicks in place.

Step 9



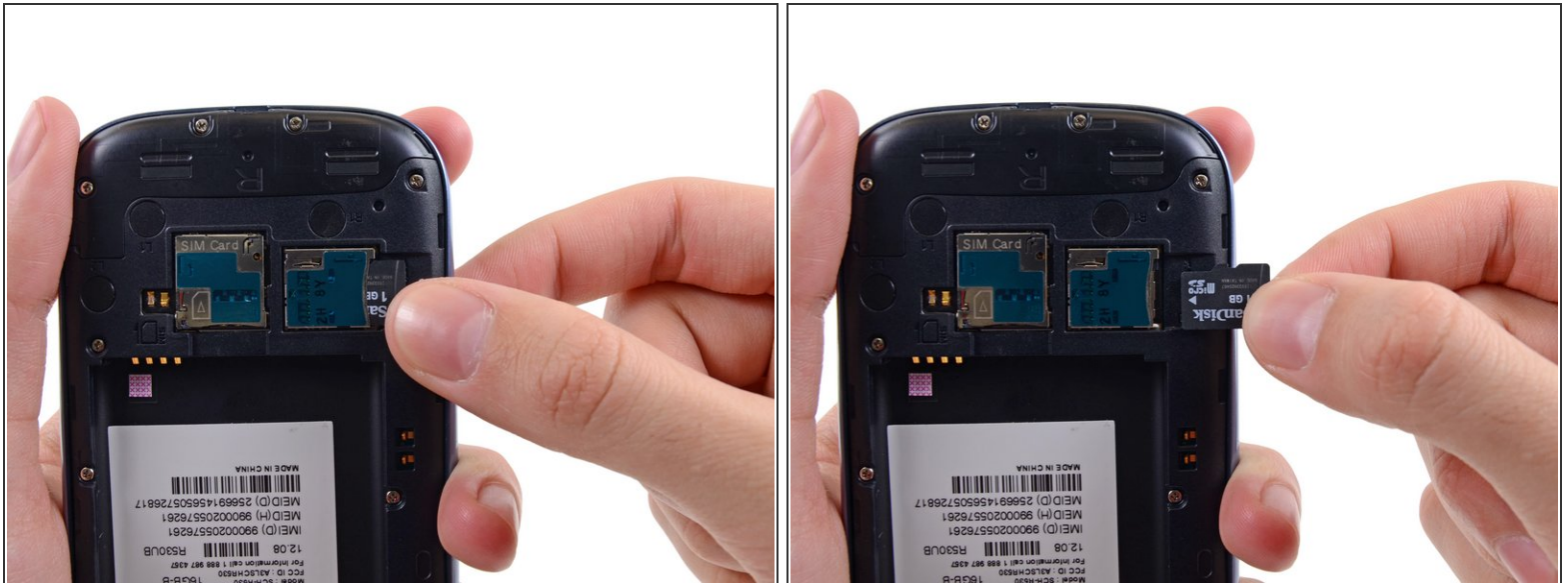
- Use your thumb to slide enough of the SIM card out of its slot to grab ahold of it.
- Grasp and remove the SIM card away from the phone.

Step 10 — microSD Card



- Using your fingernail, push the microSD card slightly deeper into its slot, until you hear a click.
 - After the click, release the card and it will pop out of its slot.
- ✦ For reassembly, push the microSD card into the slot until it clicks in place.

Step 11



- Use your thumb to slide the microSD card out of the slot.
- Remove the microSD card from the phone.

Step 12 — Plastic Midframe




- Remove the ten 4.0 mm Phillips screws securing the midframe to the front panel assembly.

Step 13



- Grasp the left side of the plastic midframe with your thumb and forefinger and lift it away from the phone.

 The midframe lightly snaps in place, and can be removed with very little force.

Step 14 — Headphone Jack/Speaker Assembly



- Use a plastic opening tool to pry the rear-facing camera connector up from its socket on the motherboard.

⚠ Make sure you are prying on the connector and not the socket, or you may damage the motherboard.

Step 15



- Insert a plastic opening tool outboard of the speaker portion of the headphone jack/speaker assembly.
- Gently pry the headphone jack/speaker assembly up from the front assembly.

Step 16



- Lift the headphone jack/speaker assembly out of the Galaxy S III.

Step 17 — Motherboard Assembly



- Use a plastic opening tool to pry the front-facing camera connector from its socket on the motherboard.

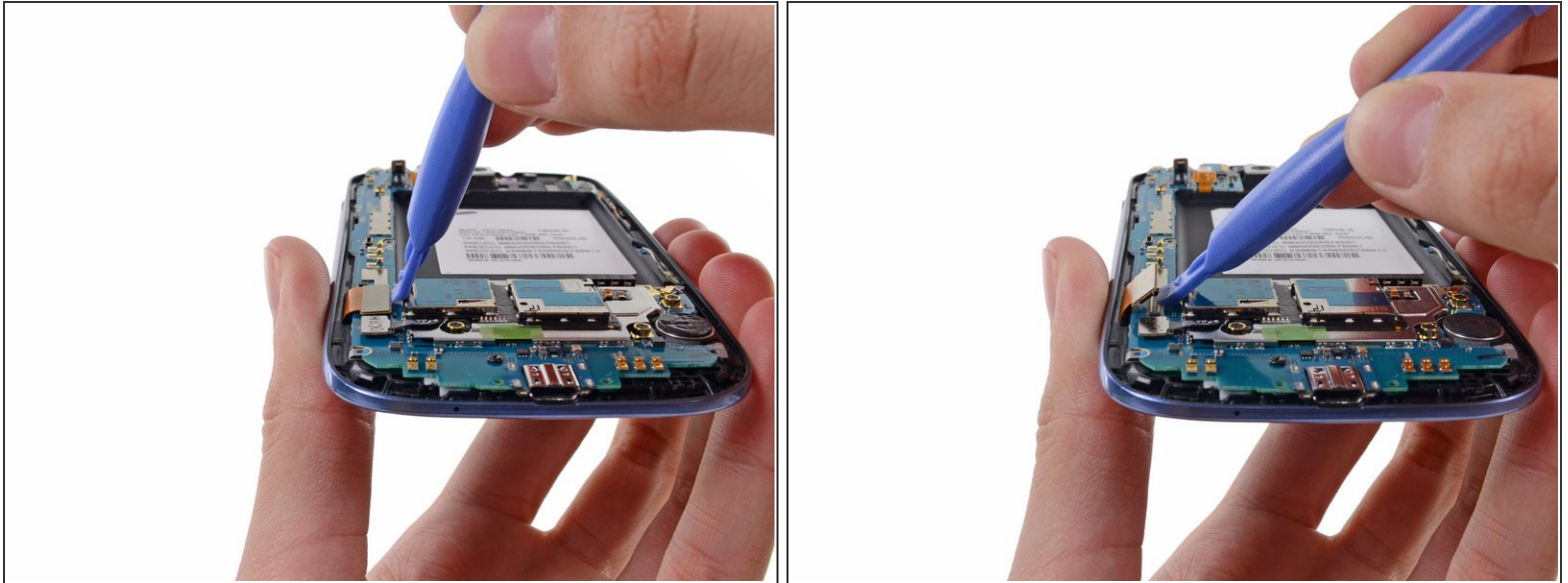
⚠ Do not try to remove the front-facing camera just yet. Its cable is still routed beneath the motherboard assembly to the ambient light sensor.

Step 18



- Disconnect the digitizer cable by gently prying its connector up from its socket on the motherboard.

Step 19



- Disconnect the display data cable from the motherboard.

Step 20



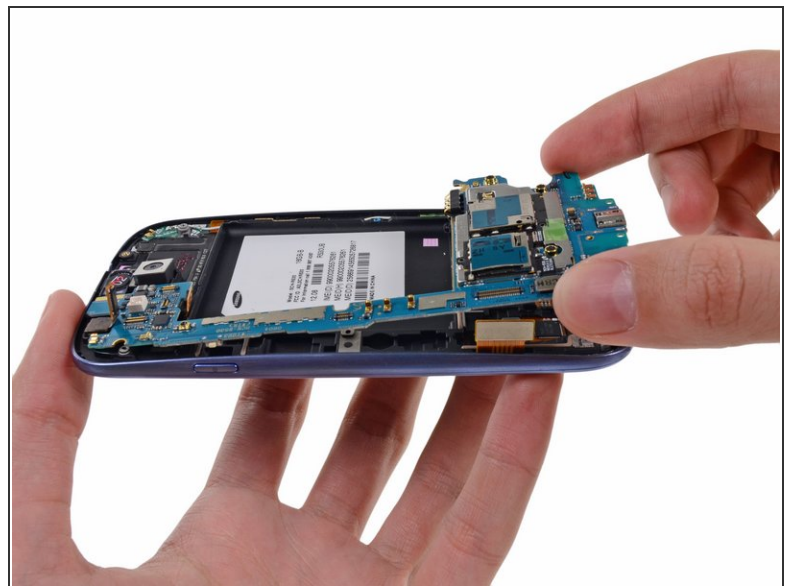
- Pry the Wi-Fi antenna cable connector up from its socket on the motherboard.
- Gently move the cable out of the way of the motherboard.

Step 21



- Remove the single 3.0 mm Phillips screw securing the motherboard to the front panel assembly.

Step 22



- Carefully lift the bottom of the motherboard assembly away from the front panel assembly.
- Remove the motherboard assembly from the front panel assembly, minding any cables that may snag on it.

Step 23 — Front-Facing Camera



- Remove the single 2.0 mm Phillips screw securing the front-facing camera bracket to the front panel.

Step 24



- Use a pair of tweezers to lift the front-facing camera/ambient light sensor/rear microphone assembly out from its socket in the front panel assembly.

To reassemble your device, follow these instructions in reverse order.

This document was generated on 2022-08-24 09:55:37 PM (MST).

