



# MFC-J4410DW Upper Cover Removal

How to disassemble the printer down to the upper cover.

Written By: Calion



---

## INTRODUCTION

This Guide will walk you through disassembling the printer down through the upper cover, which is necessary to access many components.

---

### **TOOLS:**


- [Spudger](#) (1)
- [Phillips #2 Screwdriver](#) (1)
- [Protective Part](#) (1)

*optional*

---

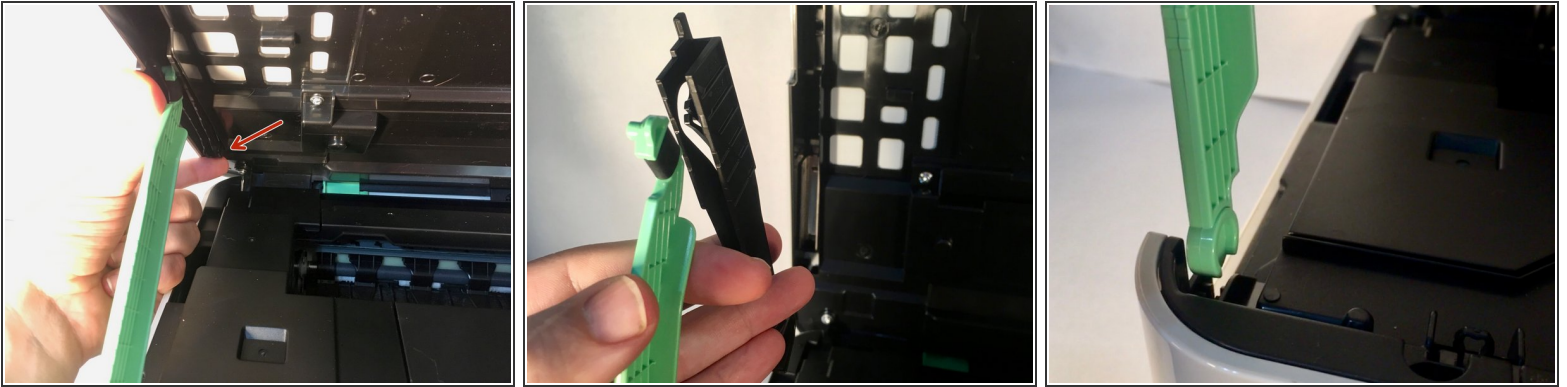
## Step 1 — Preparation



 Before beginning disassembly, turn off the printer and unplug the power cord.

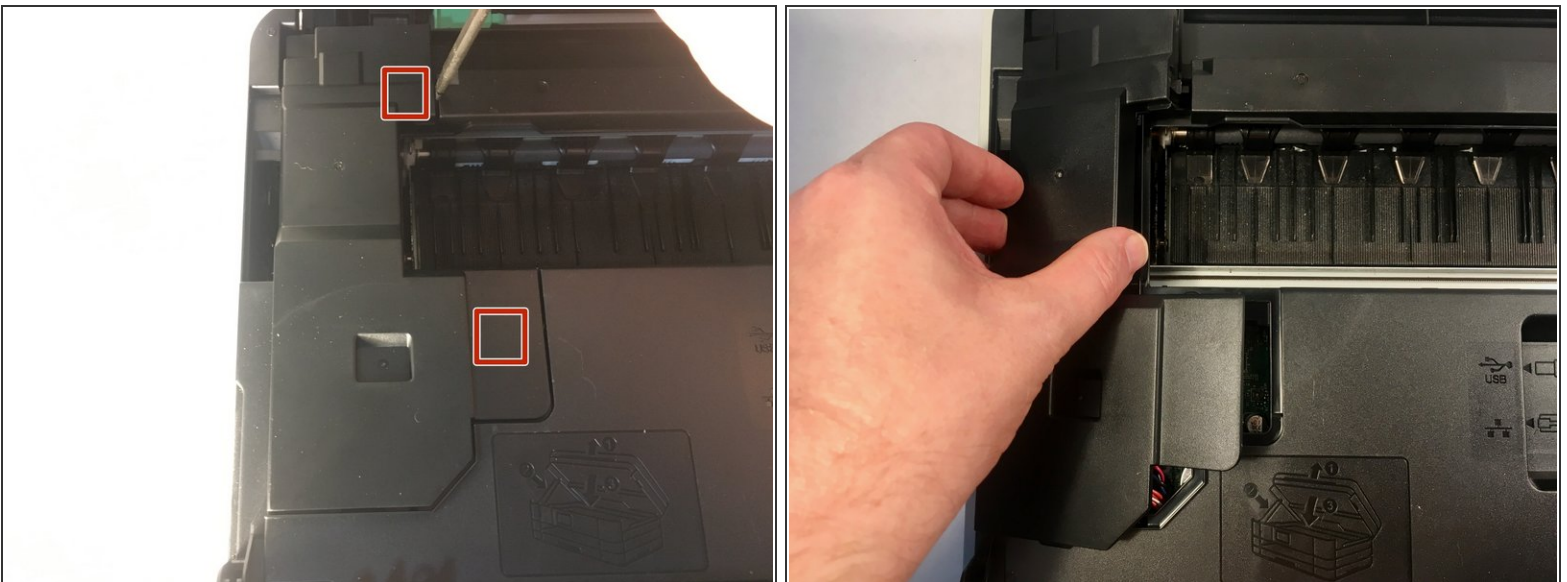
- Open the front access door and remove any cards or cables present. Close the access door.
- Remove the paper tray.
- Remove the ink cartridges.
  - ① You may wish to install the [Protective Part](#) to prevent the ink tubes from drying while the cartridges are removed.
- Open the printer cover using the finger holds on the sides.
- Unplug and remove any cords present under the cover.
- Remove the LAN port and EXT port caps (if present).

## Step 2 — Removing the cover support



- While holding the cover with one hand, pull the hook on the back of the support damper, then remove the damper from the cover.
- Remove the damper from the support.
- Turn the support upright and pull it straight out of the printer.

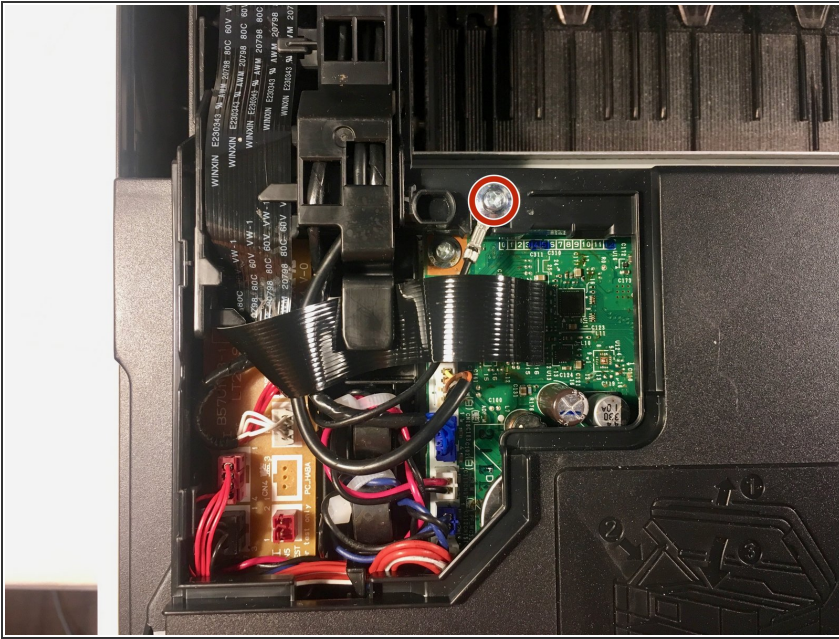
## Step 3 — Removing the harness cover



- Use your finger or a spudger to unhook the two tabs on the right side of the harness cover by levering it up.
- Remove the harness cover. There are two tabs on the left side that you have to wiggle free, and one on the front.



## Step 4 — Removing the grounding screw

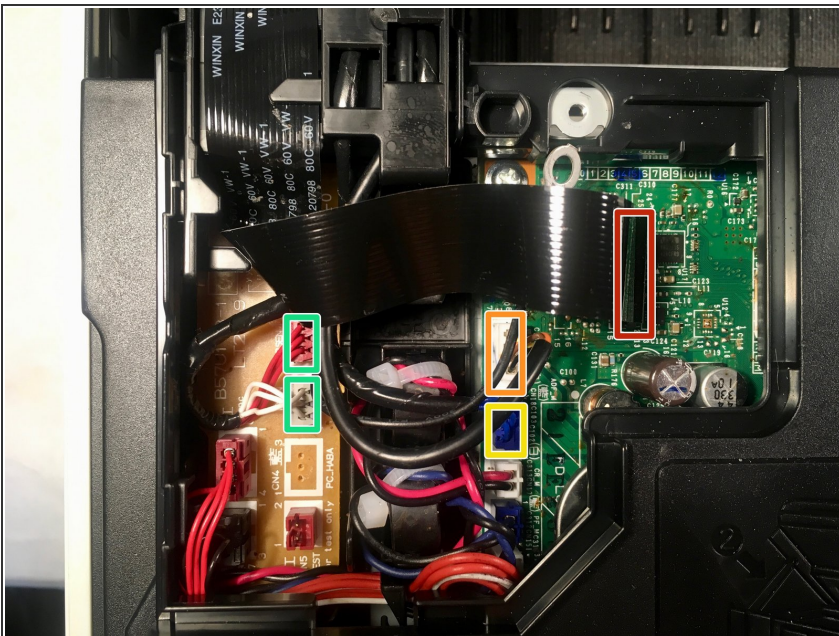


- Remove the 6 mm Phillips #2 screw from the grounding wire of the ADF motor harness.

★ Torque:  $0.40 \pm 0.10 \text{ N}\cdot\text{m}$

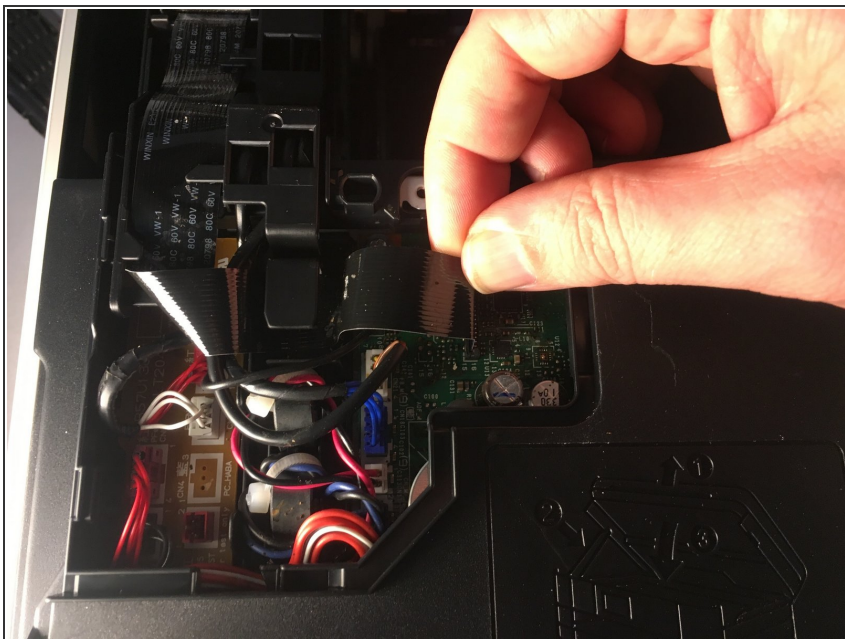
- ⓘ The Brother service manual lists torques for all screws, but proper torque should not be necessary.

## Step 5



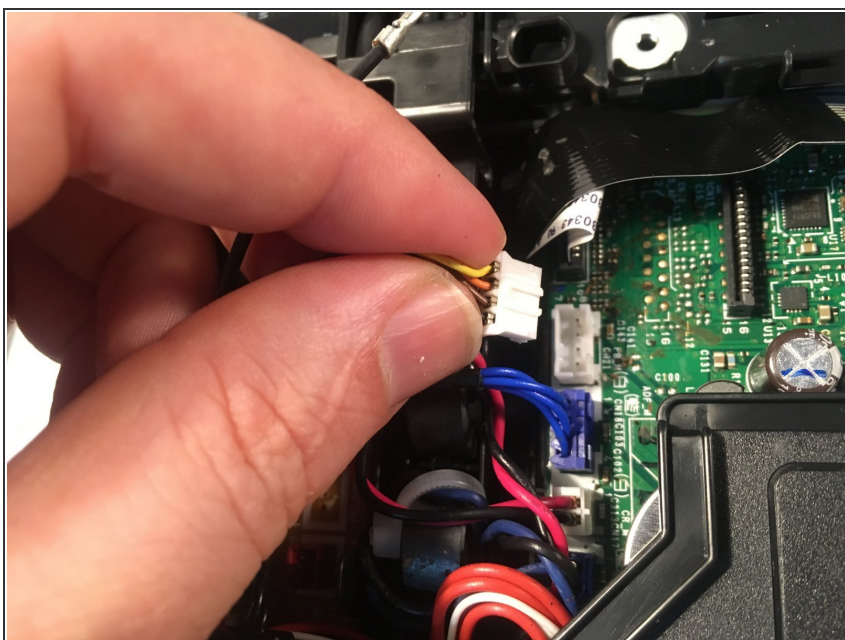
- In the proceeding steps, you will disconnect the following cables:
  - CIS flat cable
  - Scanner motor harness
  - ADF motor harness
  - Document detection/document scanning position sensor harness

## Step 6



- Pull the CIS flat cable out of its socket.
- ⓘ Pull all flat cables directly up out of their sockets, pulling on the cables themselves at the blue tabs.

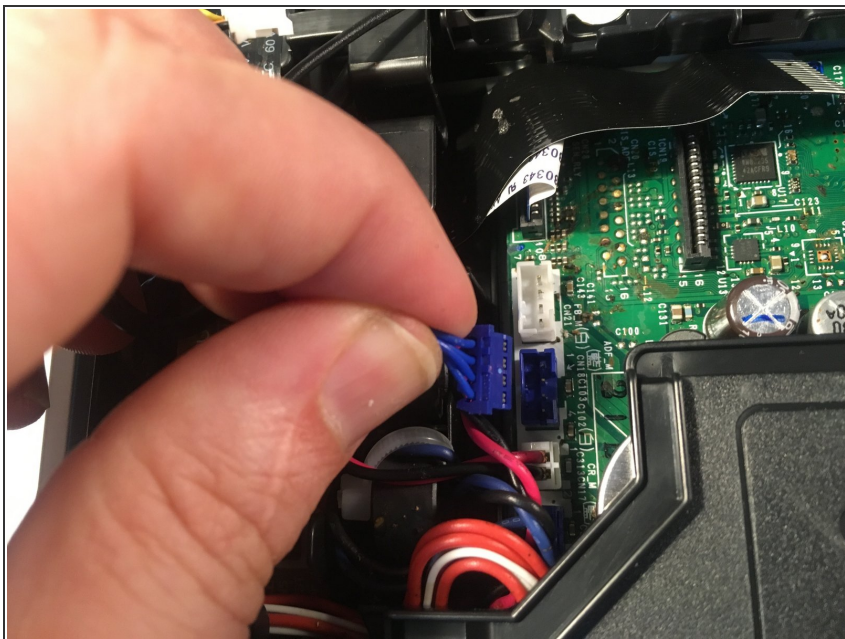
## Step 7



- Pull the scanner motor harness out of its socket.

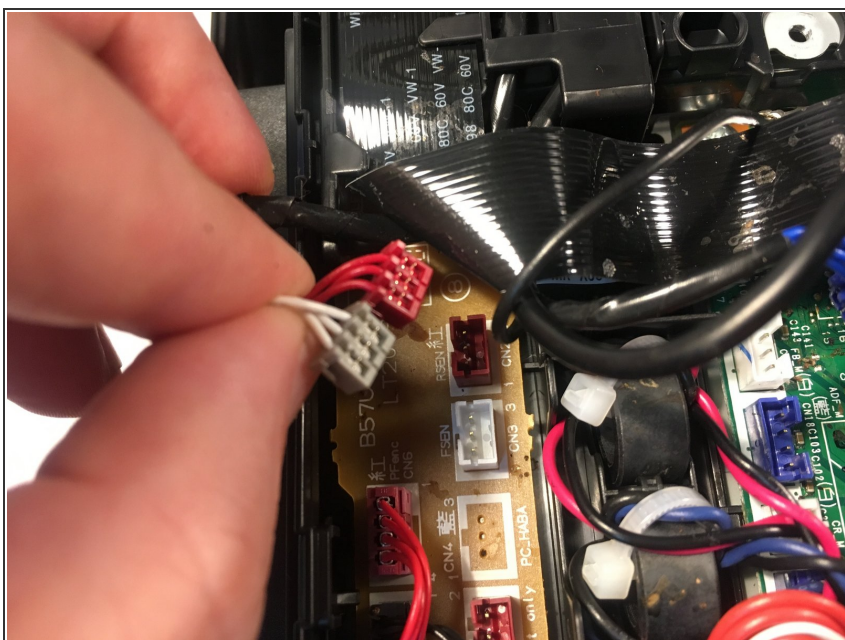


## Step 8



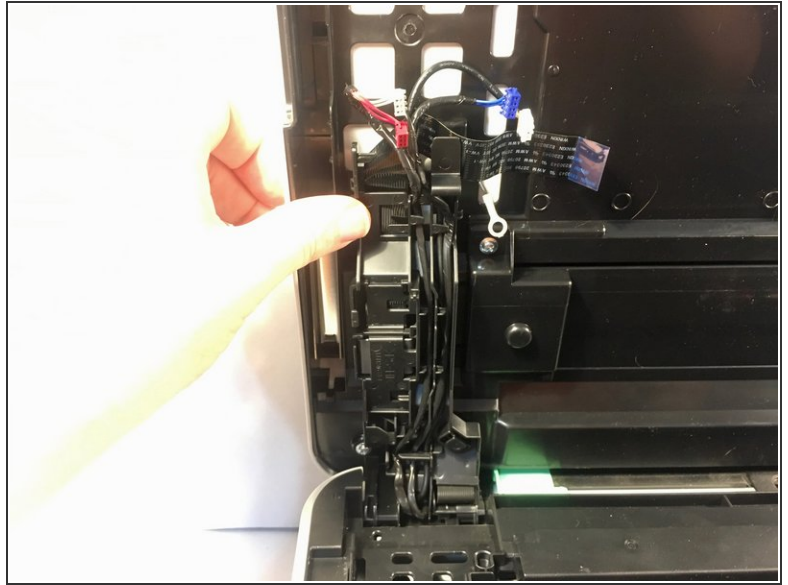
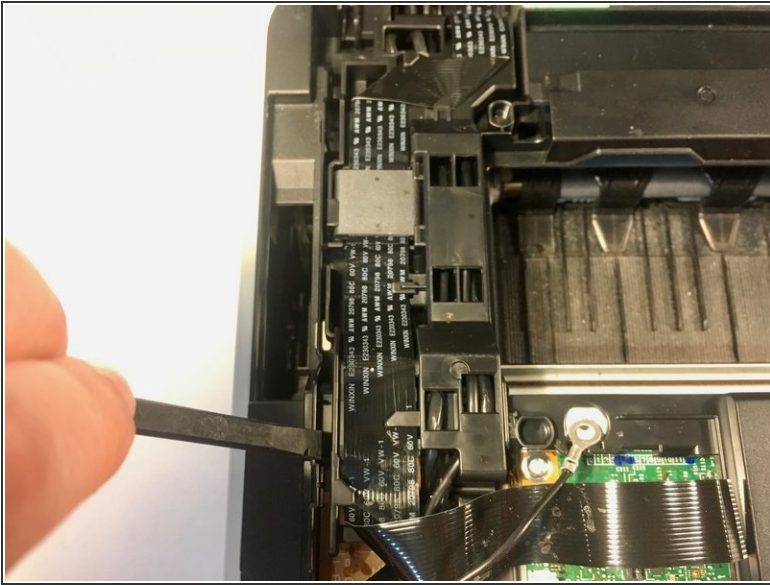
- Pull the ADF motor harness out of its socket.

## Step 9



- Pull the document detection/document scanning position sensor harness out of its sockets.

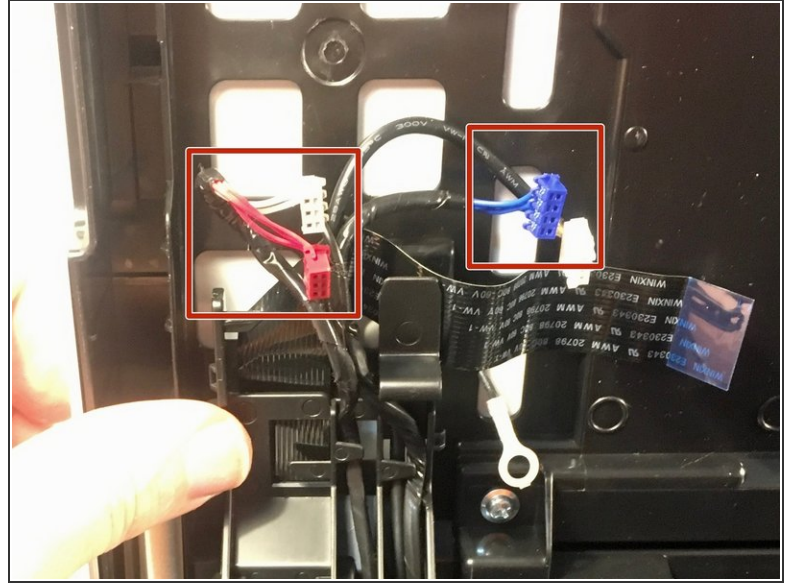
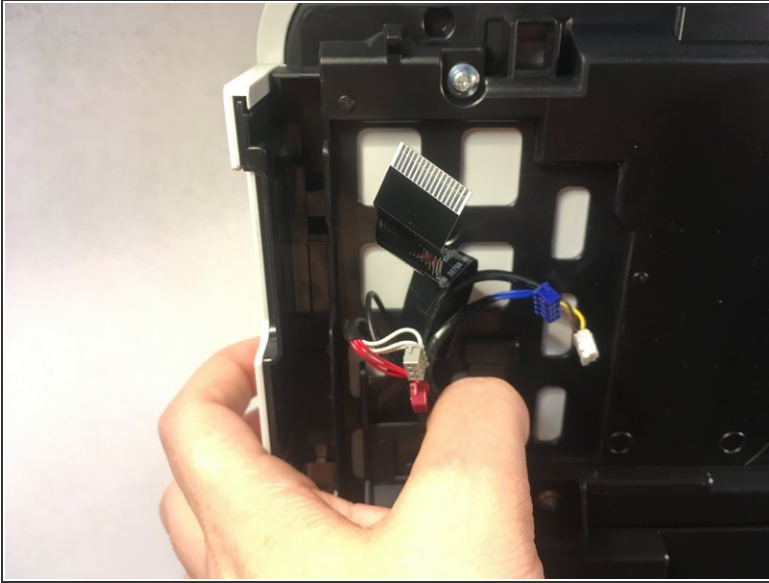
## Step 10 — Opening the scanner harness holder



- Insert a spudger between the scanner harness holder and frame to release the tab. There is a second tab on the opposite side.
  - Lift the scanner harness holder out of its frame.
- ✦ **Reassembly Note:** Before reattaching the harness holder, it is advisable to reattach the cover support ([Step 2](#)) to minimize tension on the wiring harnesses.



## Step 11 — Securing the scanner harness holder



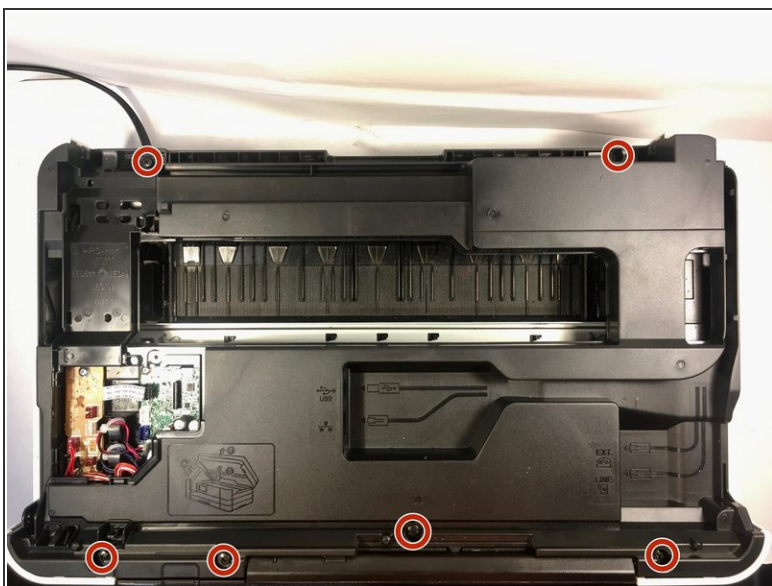
- Push on the tab to secure the scanner harness holder to the scanner cover.
- De-route the document detection/document scanning position sensor harness and the ADF motor harness from the scanner harness holder.
- ☑ During reassembly, put a 20mm-thick pad (book, stack of paper) on the scanner glass, close the scanner cover, then route the document detection/document scanning position sensor harness and the ADF motor harness through the harness holder. This will ensure the proper harness tension to allow scanning of thick books.

## Step 12 — Removing the scanner cover



- Using both hands, pull the scanner cover to the rear while holding it vertically, then lift it off of the printer.

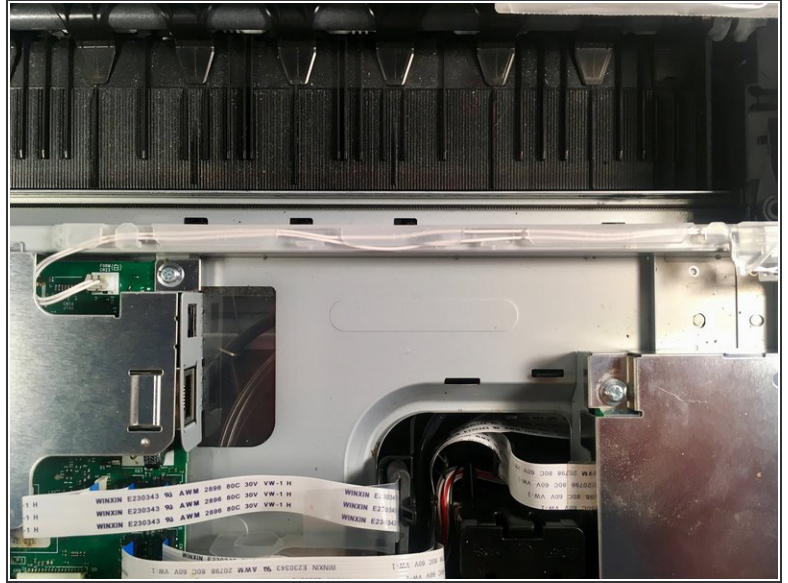
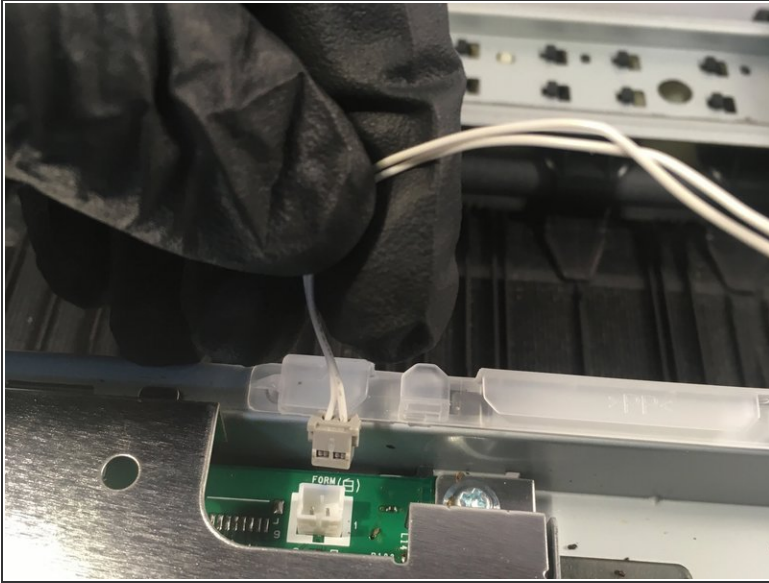
## Step 13 — Removing the upper cover



- Remove the six 12 mm Phillips #2 screws securing the upper cover to the printer.
  - ☑ Torque:  $0.70 \pm 0.10$  N•m
- Pull off the upper cover.
  - ☑ When reinstalling, ensure that the control panel wiring holder slides into its slot on the upper cover.

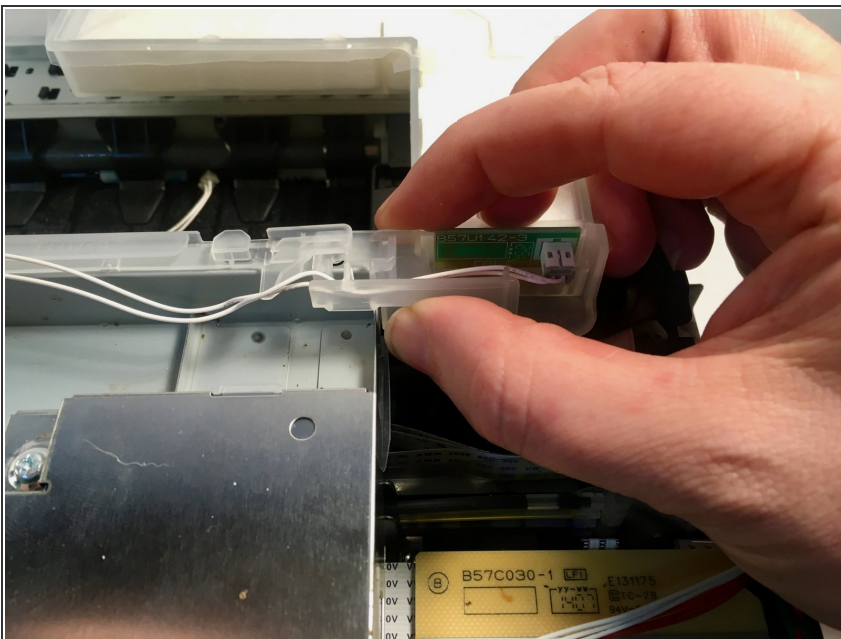


## Step 14 — Removing the ink absorber box wiring



- Remove the ink absorber full sensor from its socket.
- De-route the wiring from its harness.

## Step 15 — Unhooking the ink absorber



- Unclip the ink absorber from the harness by pulling it up and to the right.

To reassemble your device, follow these instructions in reverse order.