



iPad Mini CDMA Logic Board Assembly Replacement

Prereq for disconnecting all connectors from logic board.

Written By: Walter Galan



INTRODUCTION

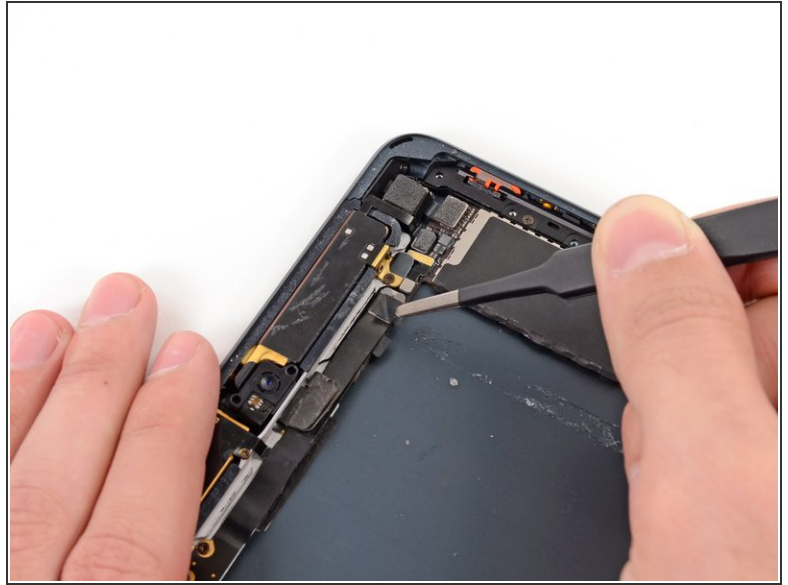
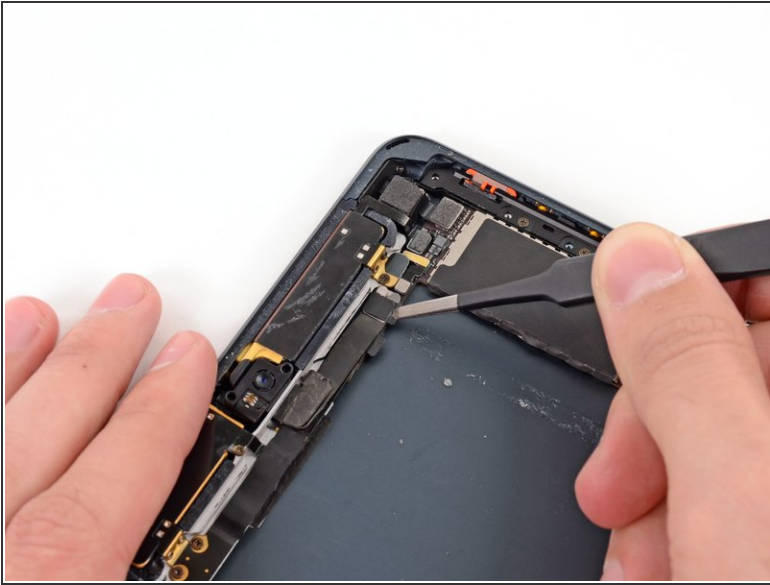
Prereq for disconnecting all connectors from logic board.



TOOLS:

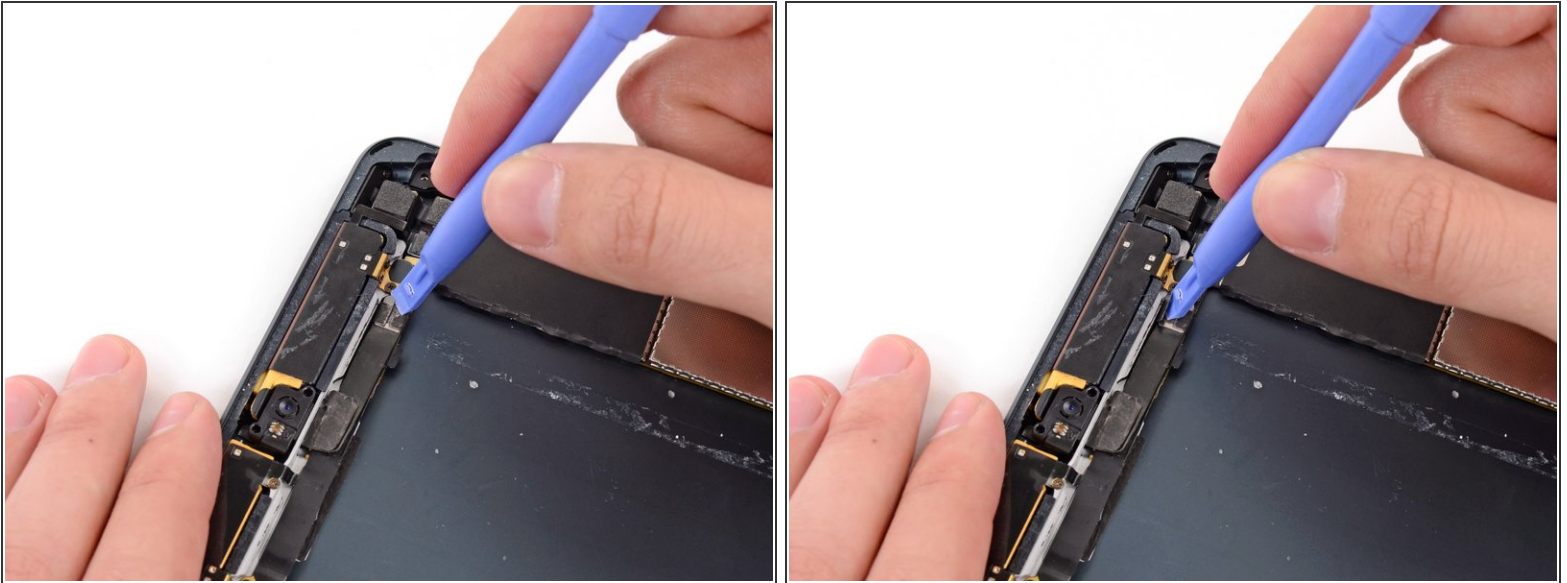
- [Tweezers](#) (1)
 - [iFixit Opening Tools](#) (1)
 - [Phillips #00 Screwdriver](#) (1)
 - [Spudger](#) (1)
-

Step 1 — Logic Board Assembly



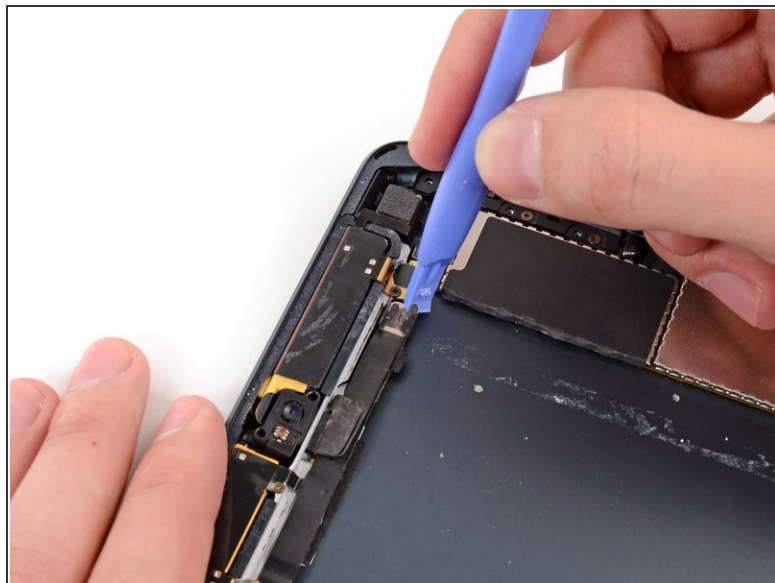
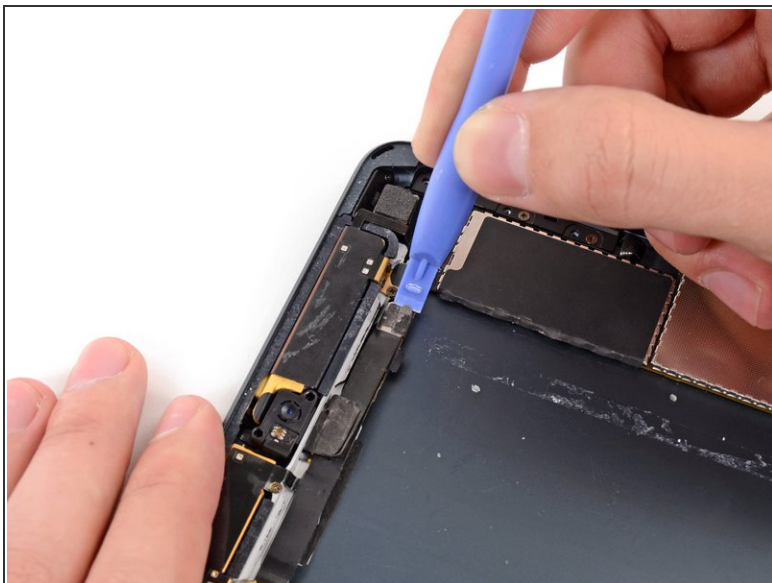
- Use tweezers to peel up and remove the small piece of tape covering the front-facing camera cable connector.

Step 2



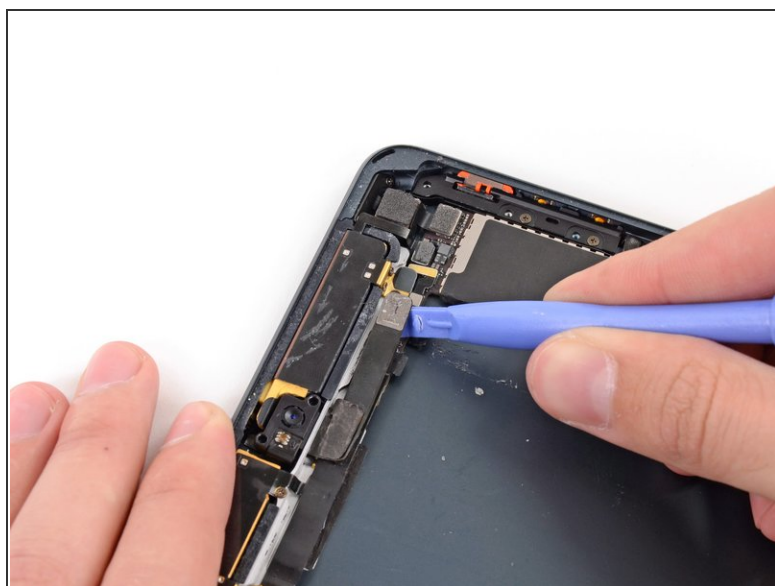
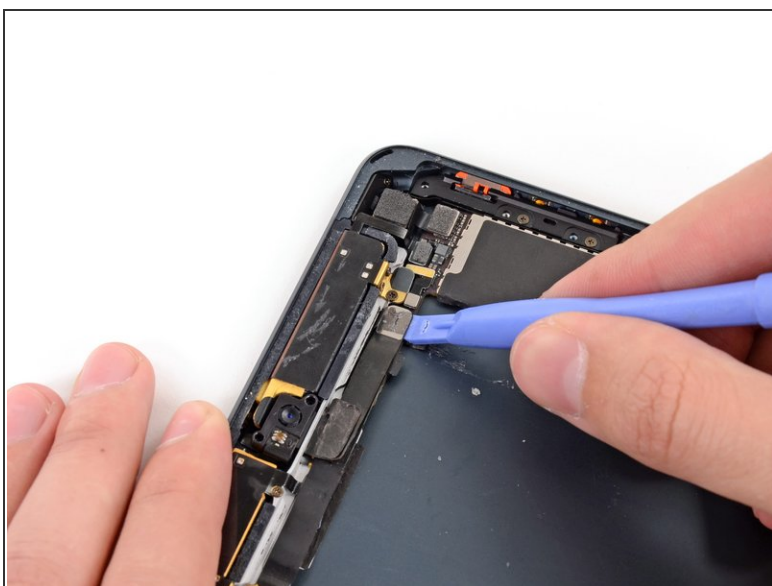
- i** The front-facing camera cable connector is secured with pieces of tape that wrap up around the sides of the cable and are fastened to two small metal plates.
- Use a plastic opening tool to gently pry the upper metal plate up from the front-facing camera cable connector.
 - Being careful not to break the plate or the tape attached to it, pry it up and fold it away from the front-facing camera cable connector.

Step 3



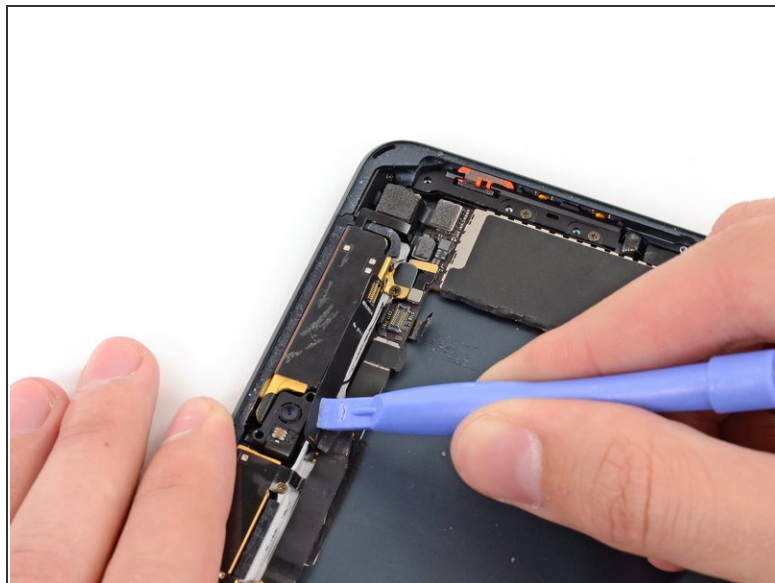
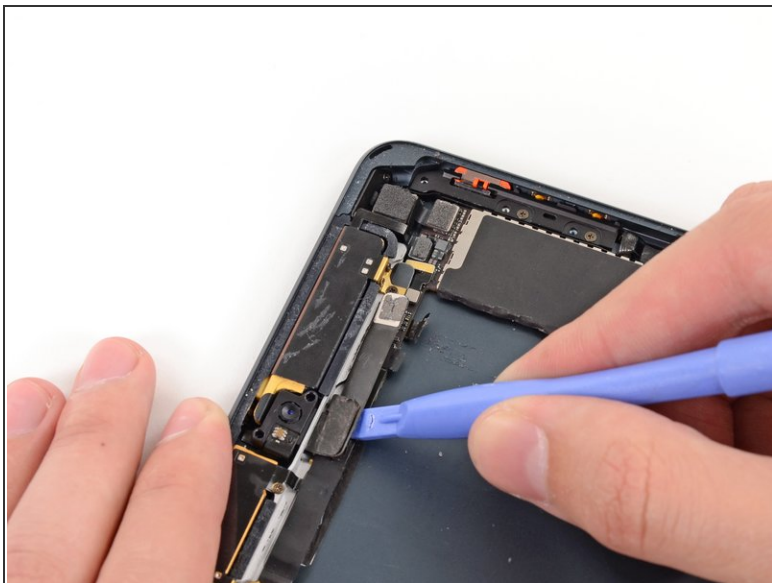
- Gently pry the second (lower) metal plate up from the front-facing camera cable connector.
- Again, carefully pry the plate up and away from the front-facing camera cable connector.

Step 4



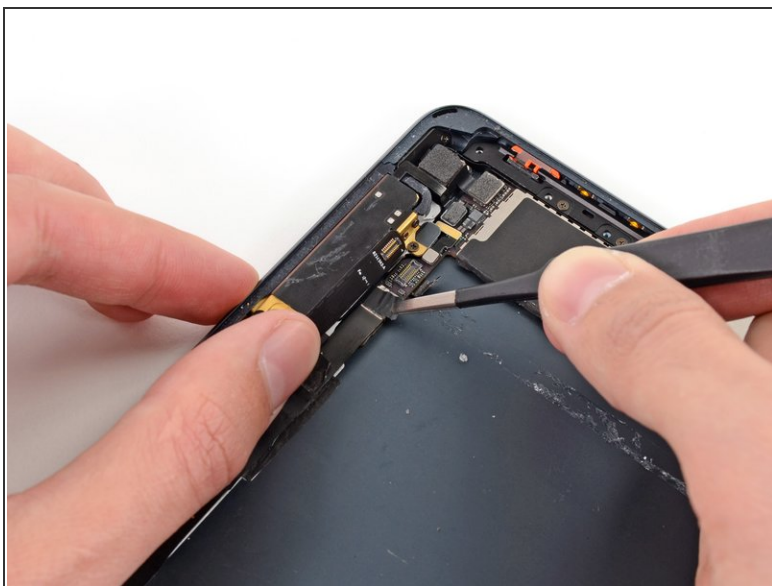
- Use a plastic opening tool to pry the front-facing camera cable's connector up from its socket on the logic board.

Step 5



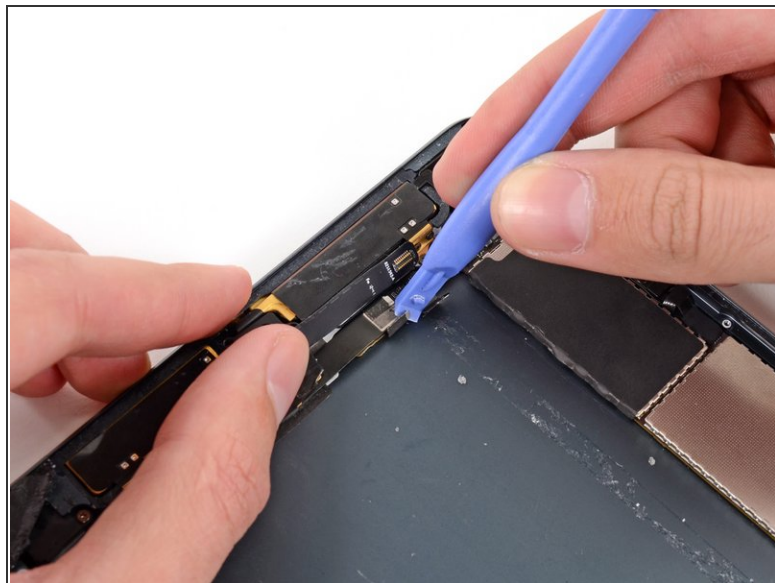
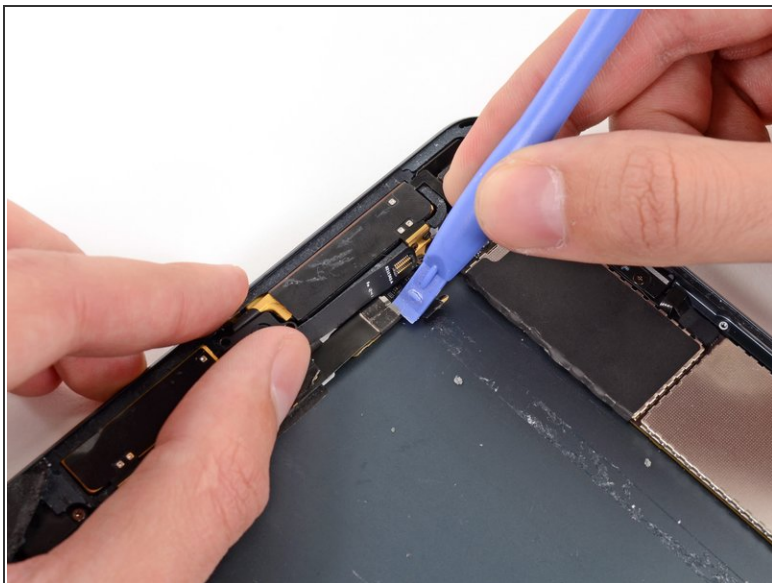
- Gently fold the front-facing camera cable up and out of the way of the logic board.

Step 6



- Use tweezers to peel up and remove the small piece of tape covering the headphone jack cable connector.

Step 7



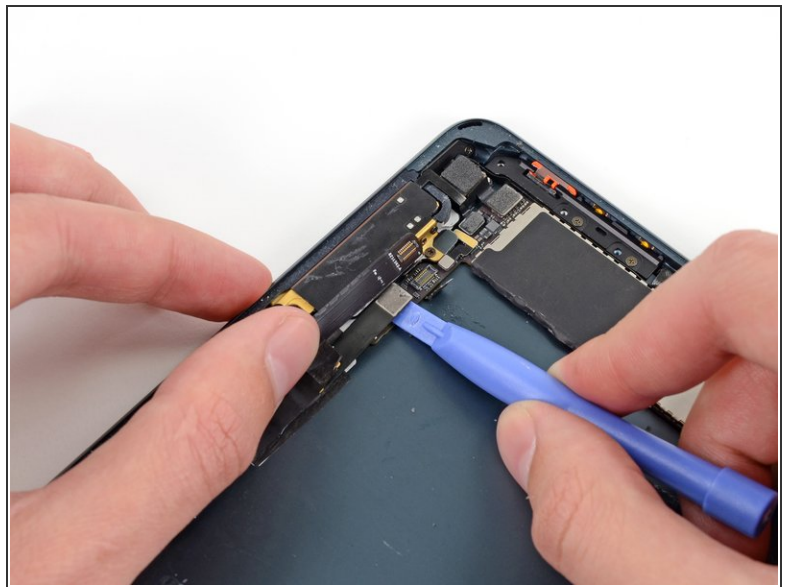
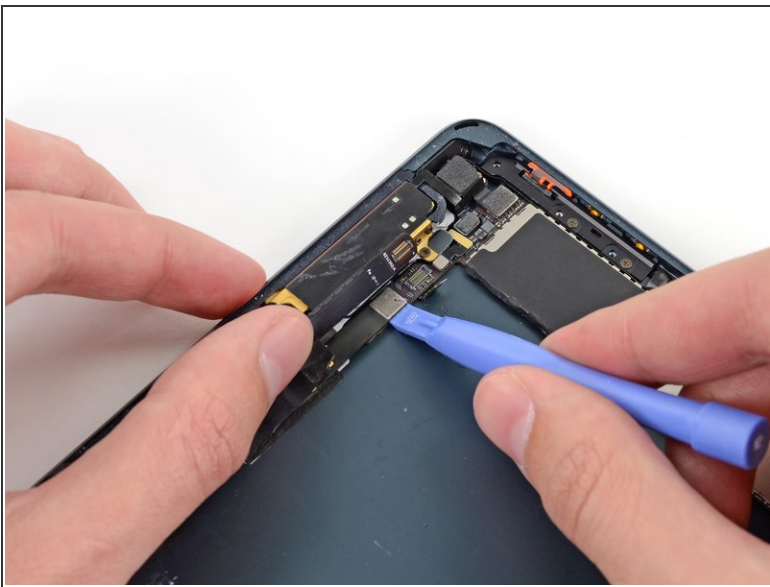
- Use a plastic opening tool to gently pry the lower metal plate up from the headphone jack cable connector.
- Being careful not to break the plate or the tape attached to it, pry it up and fold it away from the headphone jack cable connector.

Step 8



- Pry the second (top) metal plate up from the front-facing camera cable connector.
- Again, carefully pry the plate up and away from the headphone jack cable connector.

Step 9



- Use a plastic opening tool to pry the headphone jack cable's connector up out of its socket on the logic board.

Step 10



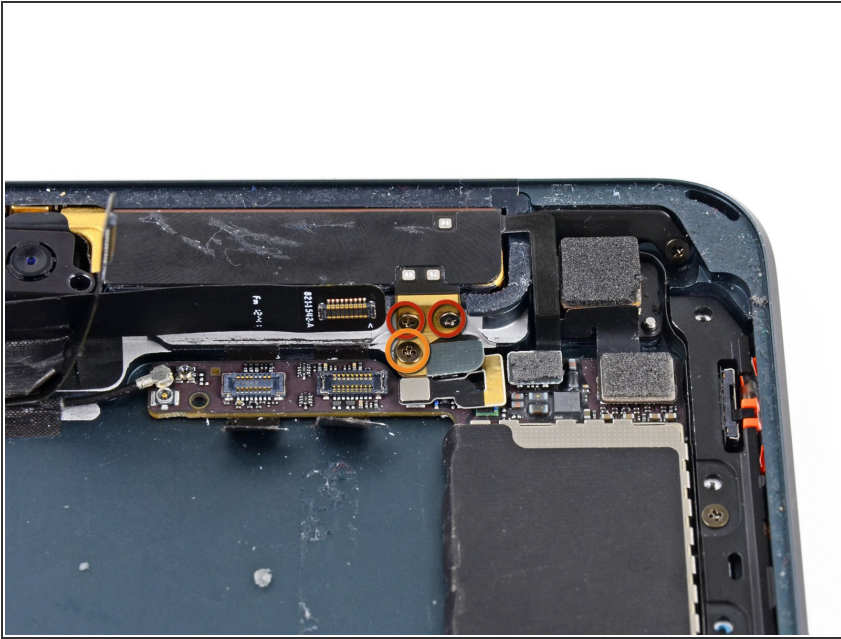
- Gently bend the headphone jack cable back, away from the logic board.

Step 11



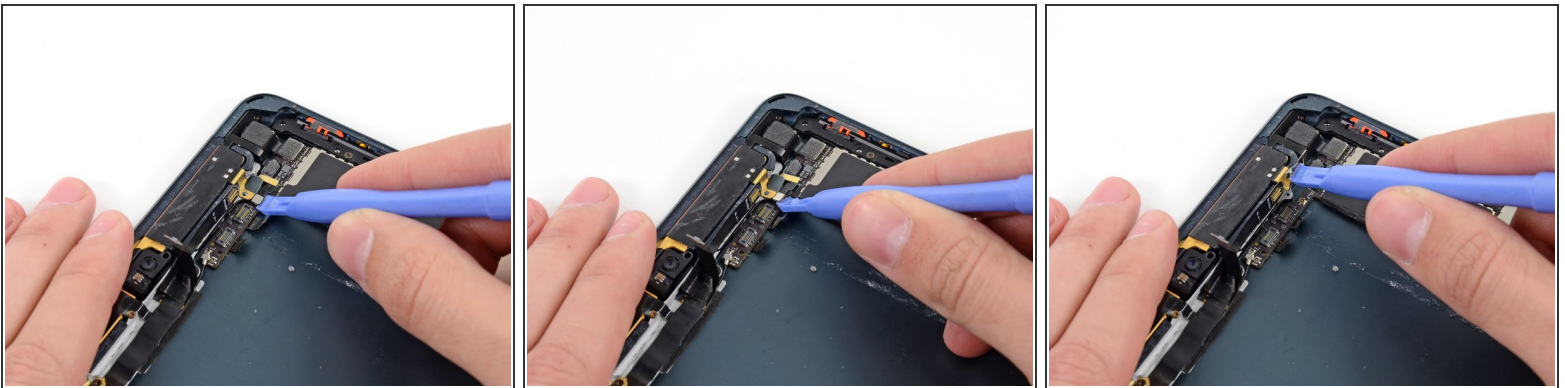
- Use a plastic opening tool to pry the top left antenna cable up from its socket on the logic board.

Step 12



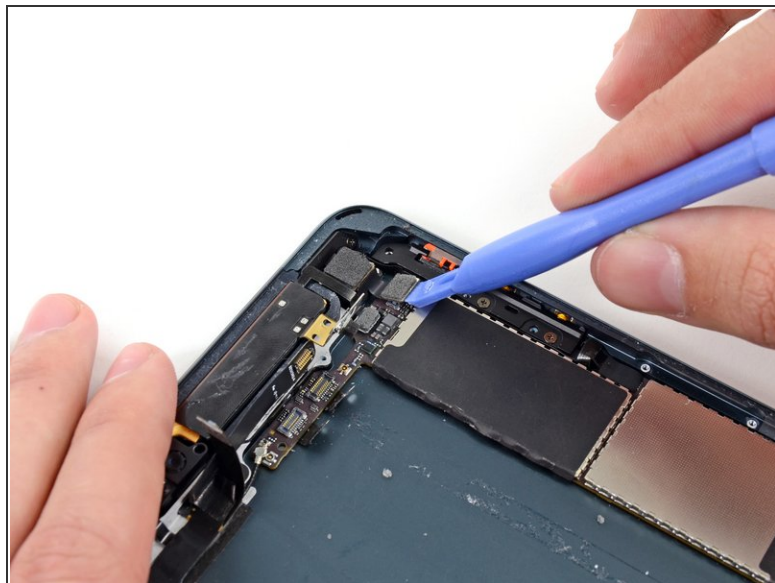
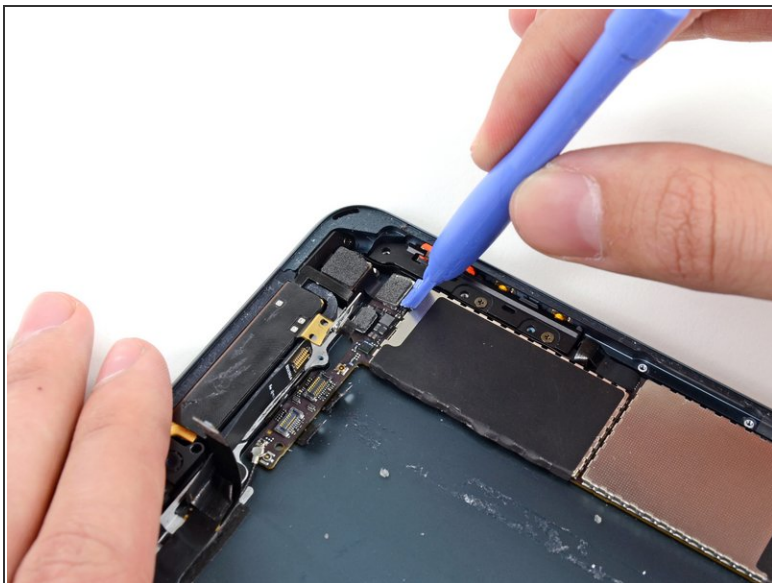
- Remove the following three screws securing the top right antenna to the rear case:
 - Two 1.3 mm #00 Phillips screws from the side of the antenna's socket.
 - One 1.8 mm #00 Phillips screw.

Step 13



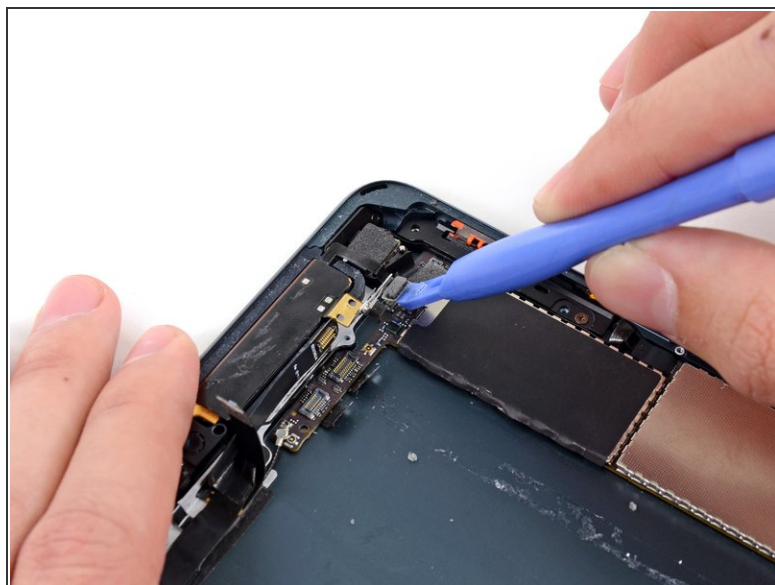
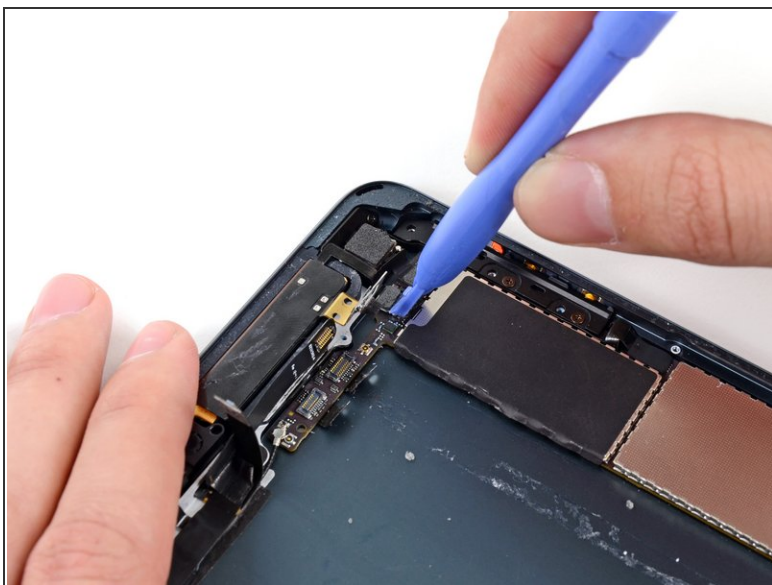
- Disconnect the top right antenna's coaxial cable from the logic board with a plastic opening tool.
- Gently bend the cable and screw tab up out of the way of the logic board.

Step 14



- Use a plastic opening tool to pry the rear-facing camera cable up from its socket on the logic board.

Step 15



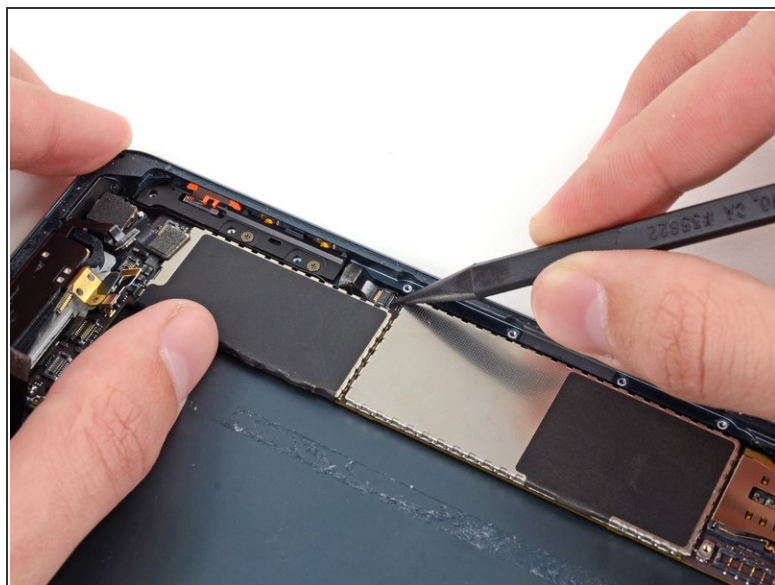
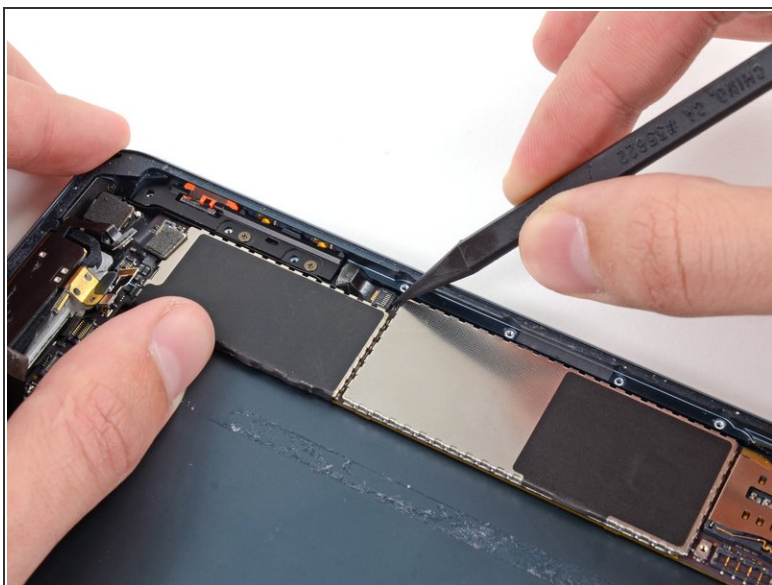
- Pry the top right antenna's ribbon cable up from its socket on the logic board with a plastic opening tool.

Step 16



- Use tweezers to peel up and remove the small piece of tape covering the button ribbon cable ZIF connector.

Step 17



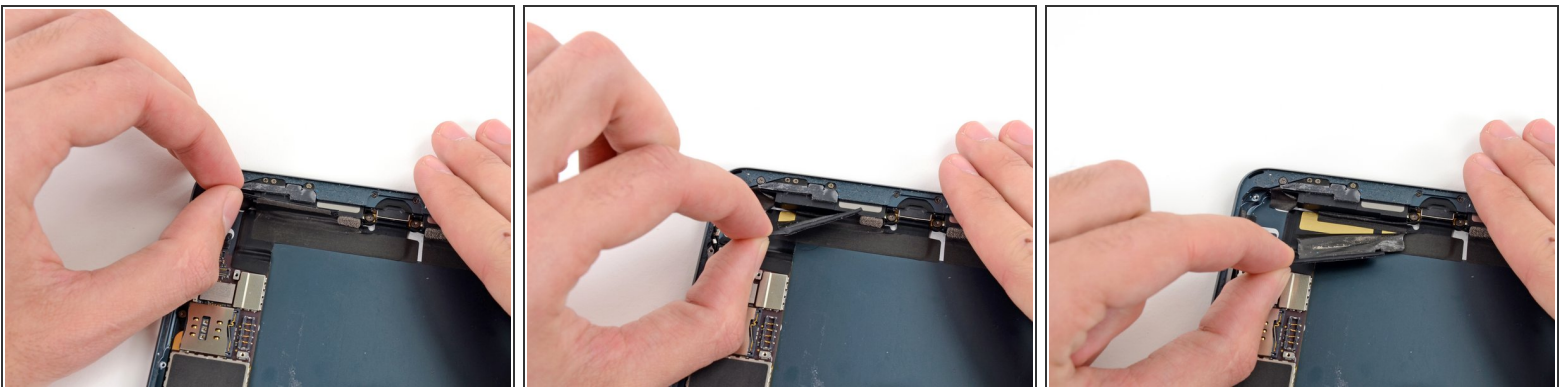
- Use the tip of a spudger to lift up the tab on the button ribbon cable ZIF connector.

Step 18



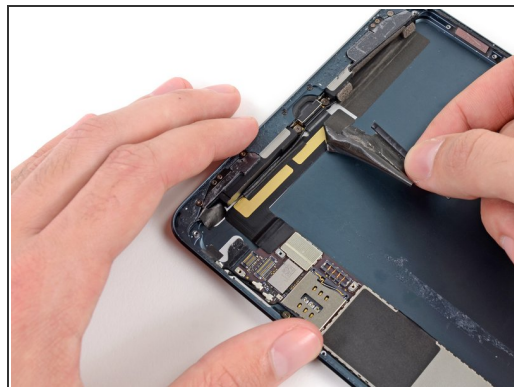
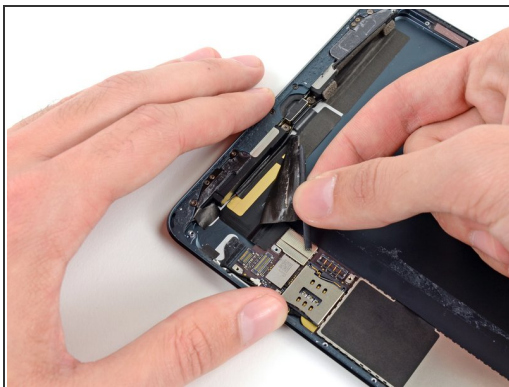
- Use tweezers to pull the button ribbon cable straight out of its ZIF socket on the logic board.

Step 19



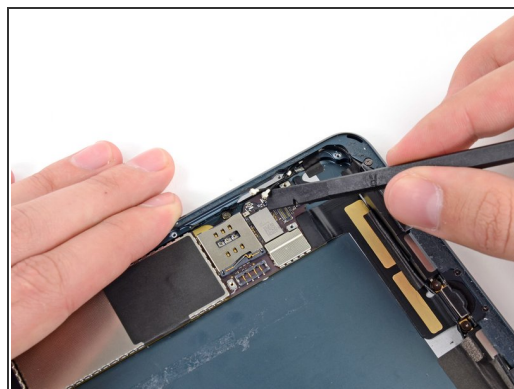
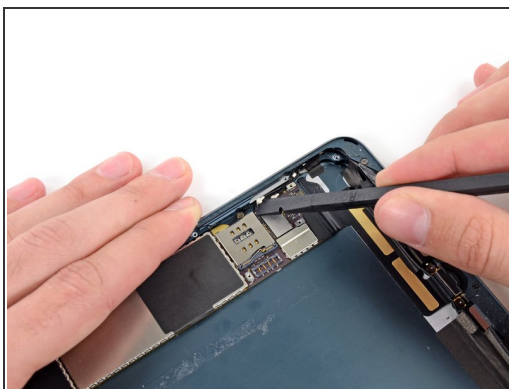
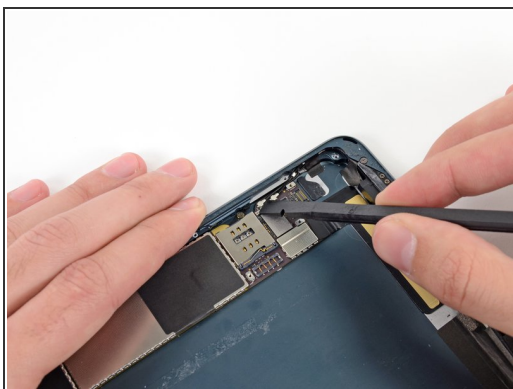
- Gently peel back the wide piece of tape covering the top of the right speaker.

Step 20



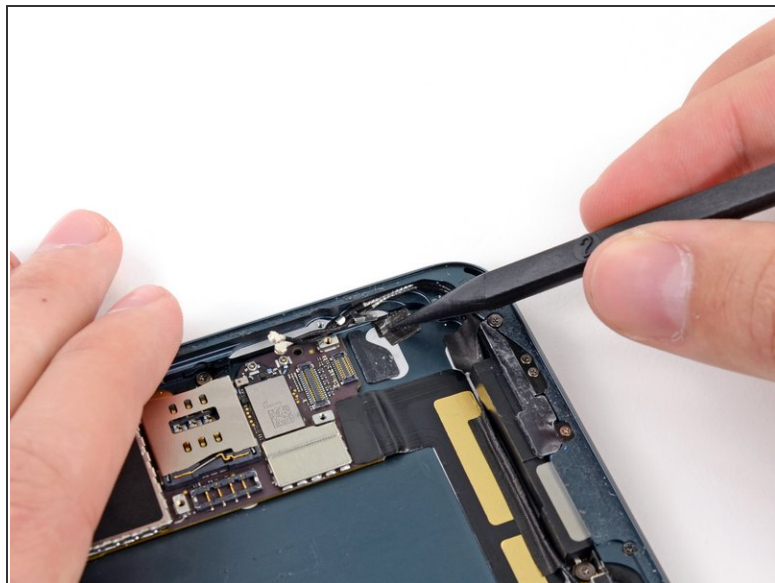
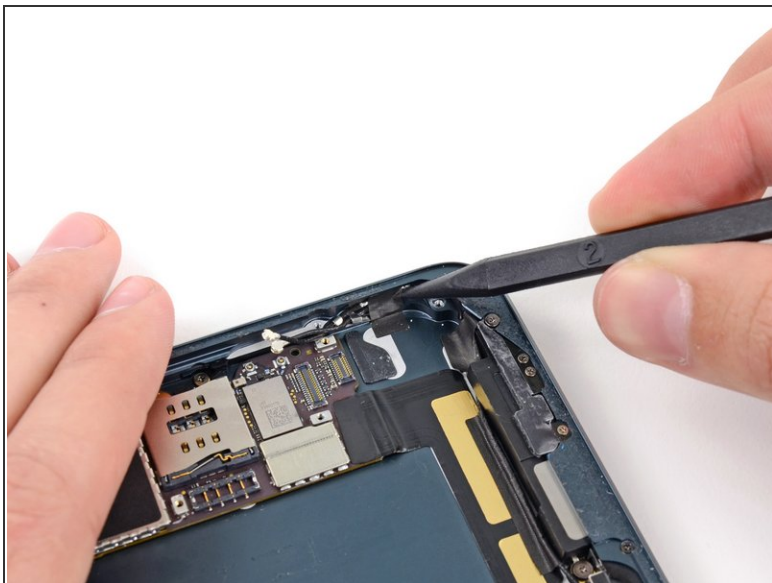
- Continue peeling the tape, and remove it from the iPad.

Step 21



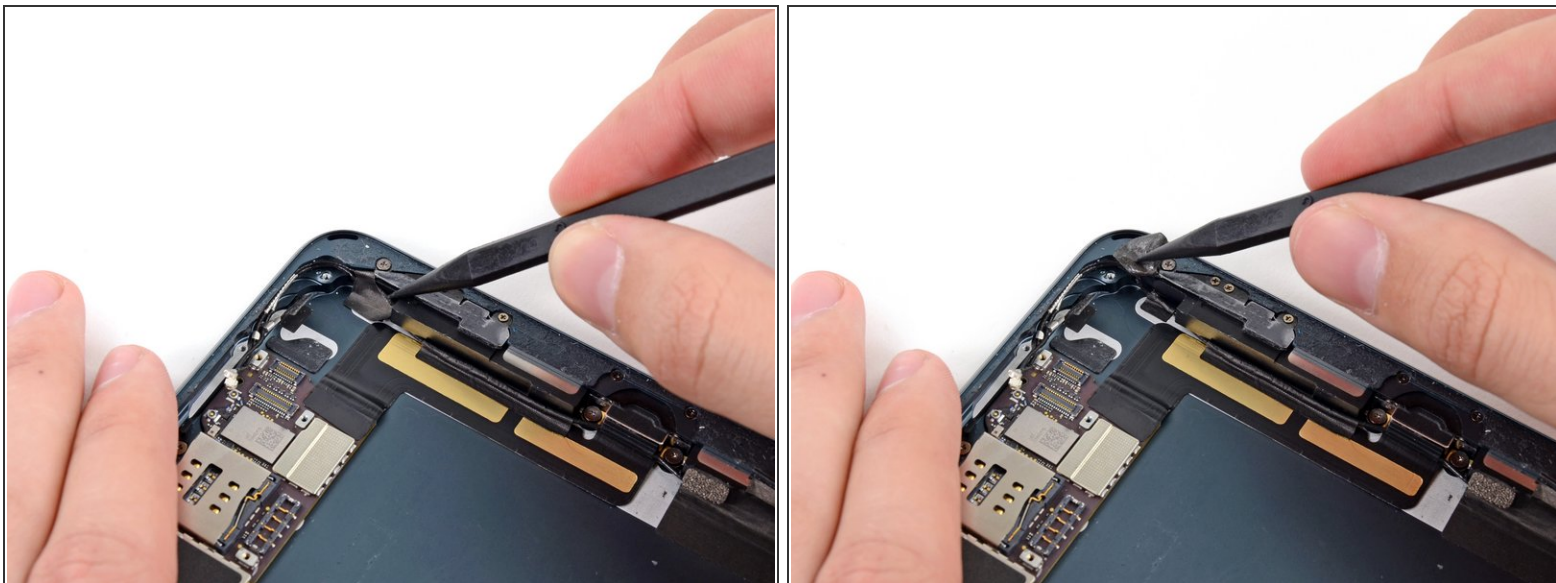
- Use the flat end of a spudger to disconnect the two bottom antenna cable connectors from their sockets on the logic board.

Step 22



- Use the tip of a spudger to peel back the small piece of tape covering both antenna cables on the bottom right side of the iPad.
- ☑ Leave the lower part of the tape stuck to the back of the rear case to aid in reassembly.

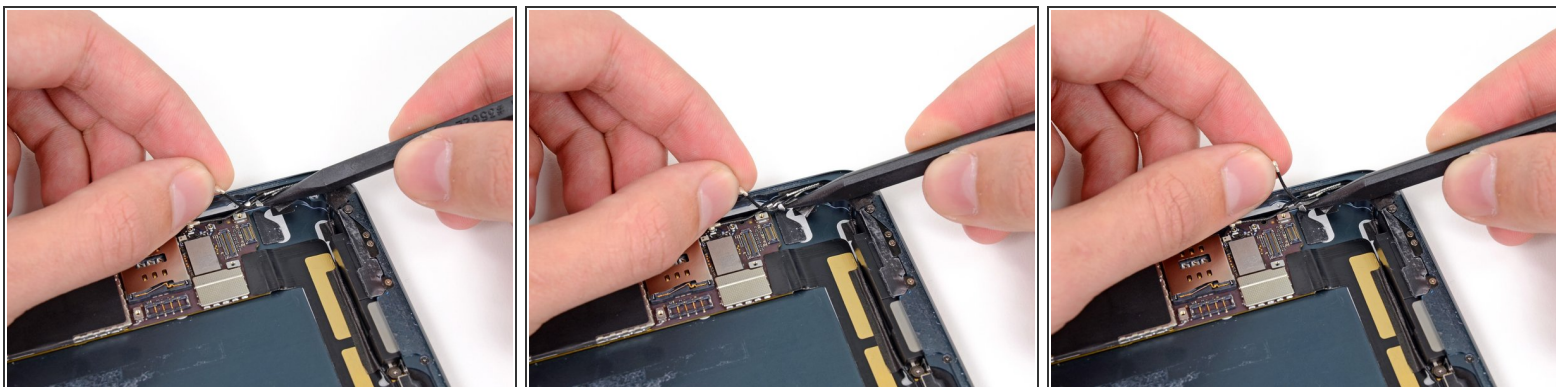
Step 23



- With the tip of a spudger, peel up the larger piece of tape covering both antenna cables near the bottom of the rear case.

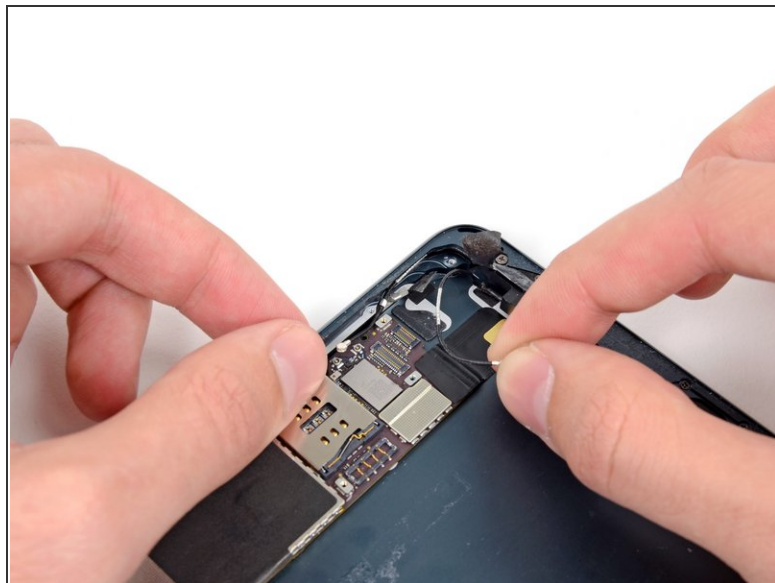
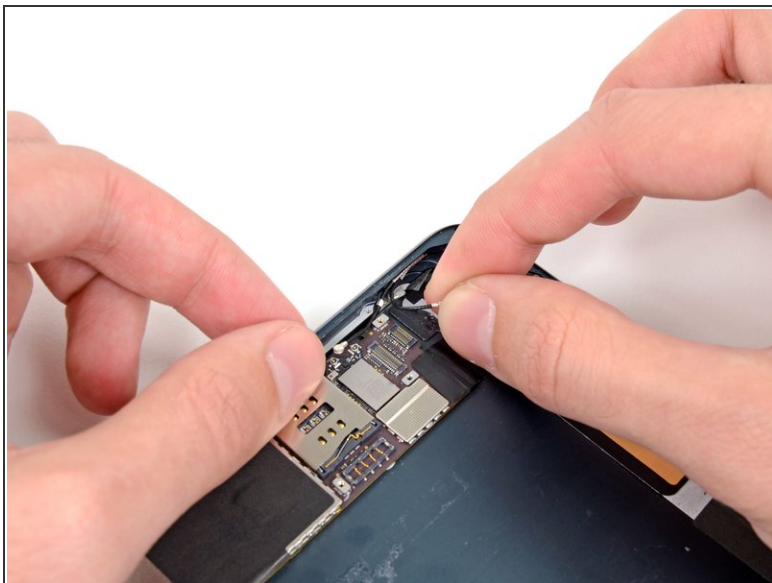
⚠ Do not try to remove this piece of tape; it is wrapped around the top antenna cable.

Step 24



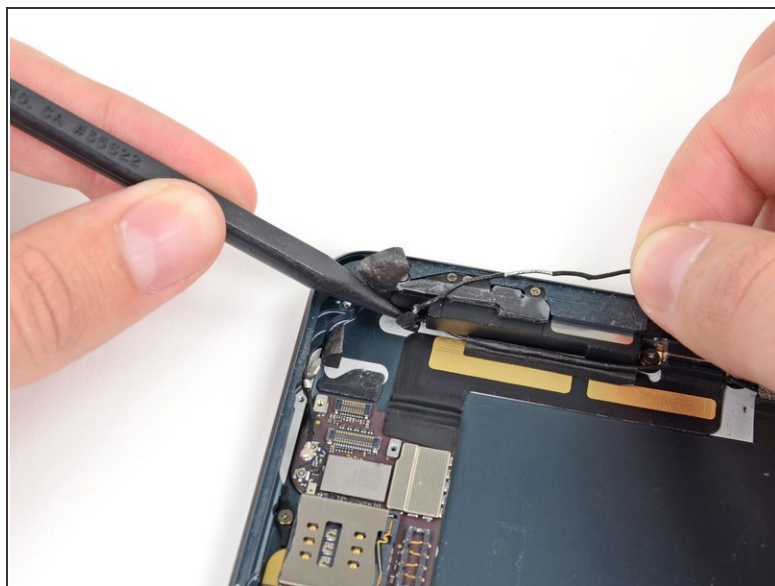
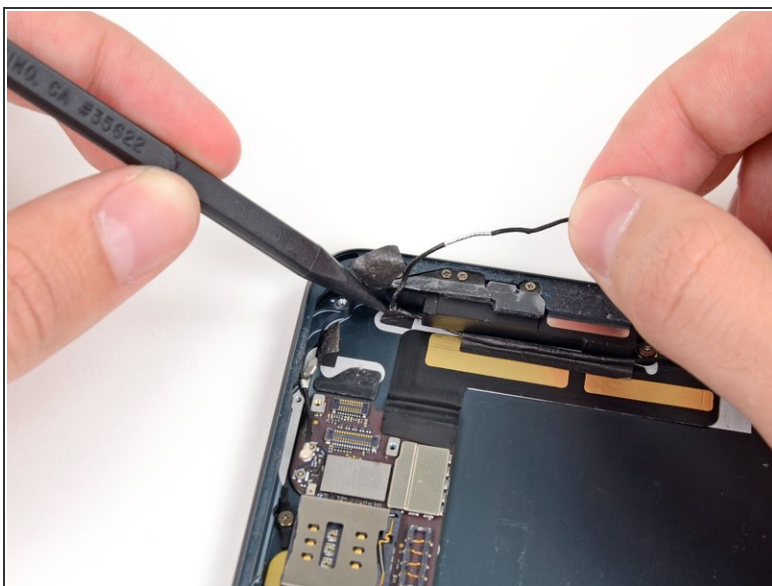
- Use the tip of a spudger to pry the small metal retaining clip off the left antenna cable, then de-route the cable from the clip.

Step 25



- De-route the antenna cable from the corner of the iPad.

Step 26



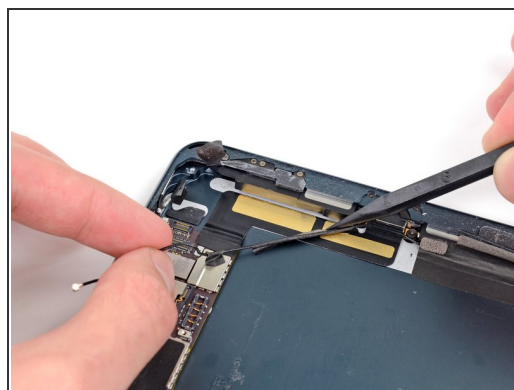
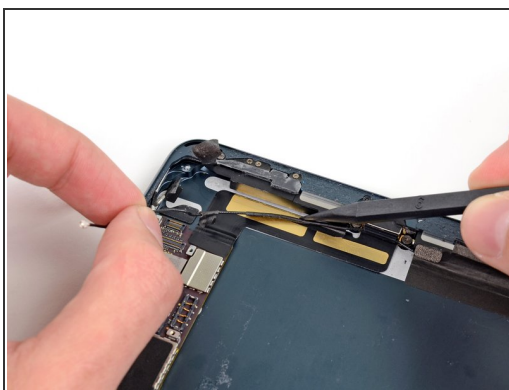
- Use the tip of a spudger to remove the small piece of tape securing the antenna cable in the bottom right corner of the iPad.

Step 27



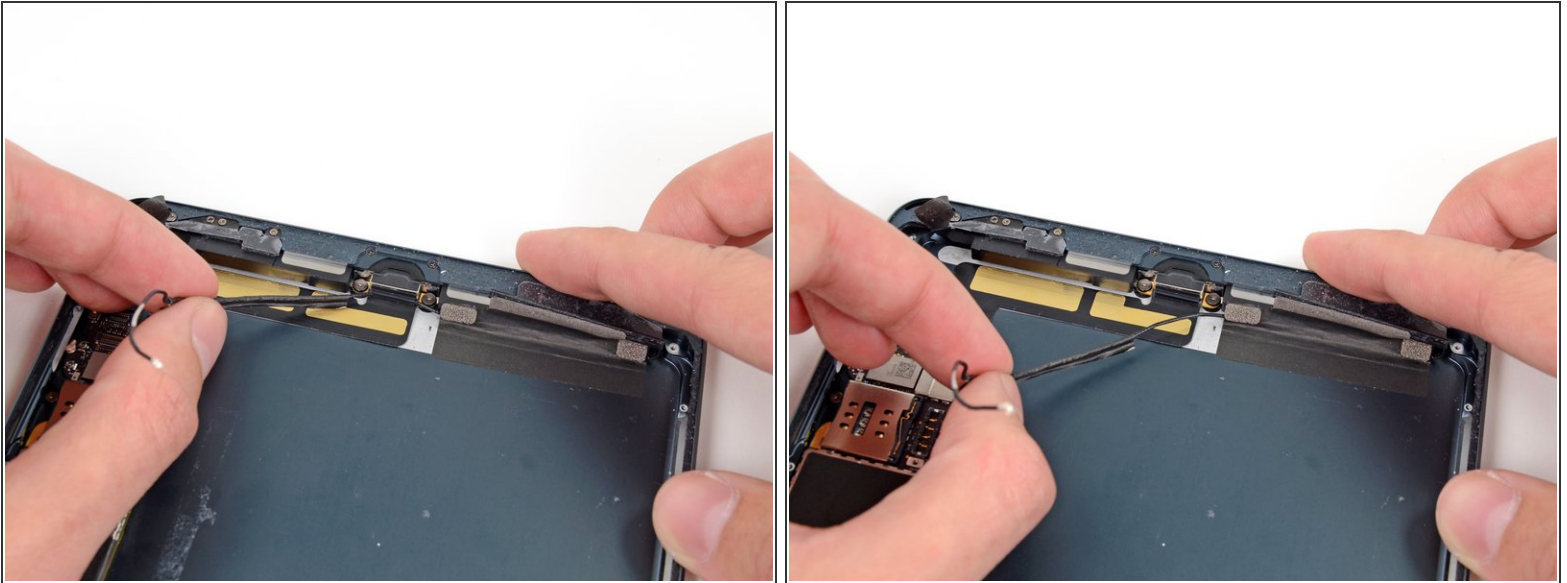
- Peel the cable back from the corner of the iPad.

Step 28



- Use the tip of a spudger to pry the antenna cable tape up from the rear case of the iPad.
- Gently pull the antenna cable out of the way as you work along the piece of tape, to keep it from resealing.

Step 29



- Pull the antenna cable from the slot behind the Lightning connector.

To reassemble your device, follow these instructions in reverse order.