



Emporia Vue Teardown

The Emporia Vue is a current monitoring system...

Written By: Steve Willson



INTRODUCTION

The Emporia Vue is a current monitoring system designed to provide residential users insight into their electricity usage.

TOOLS:

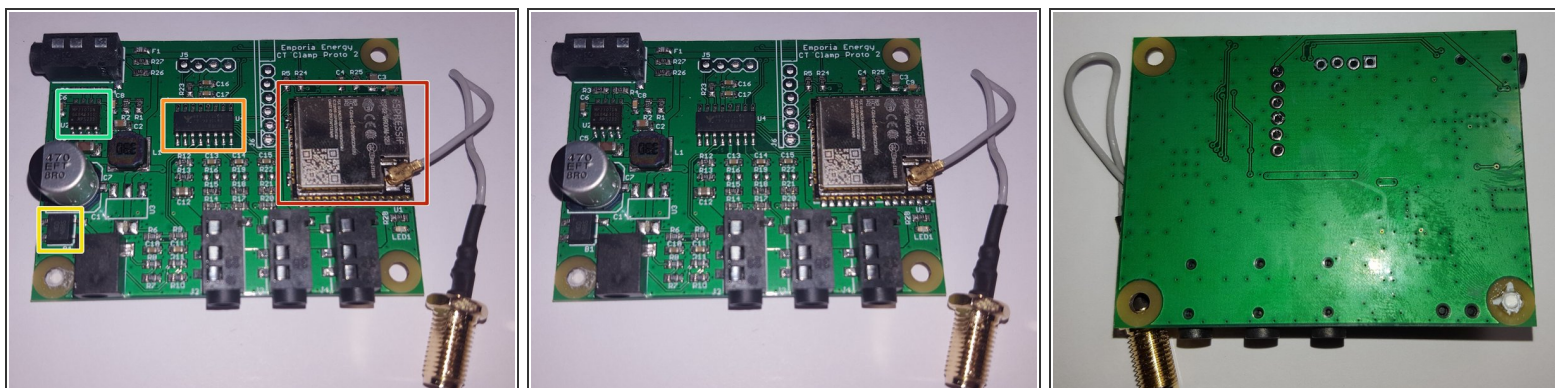
- [6-in-1 Screwdriver](#) (1)
-

Step 1 — Pry open the case



- The Emporia Vue is not designed to be taken apart. The case must be damaged to open it up.
- The red circles indicate where the case is glued together with supports.

Step 2 — Open the case



- The following components are on the inside of the case.
- ESPRESSIF ESP32-WROOM-32U
- [Silicon Labs EFM8 'Busy Bee' Microcontroller](#)
- MDD MB65
- Monolithic Power Systems [step down converter MP2307](#)

Step 3

