



Xbox 360 Wireless Controller Teardown

This Teardown guide will show you how to take apart a xbox 360 wireless controller.

Written By: RareWarrior123





TOOLS:

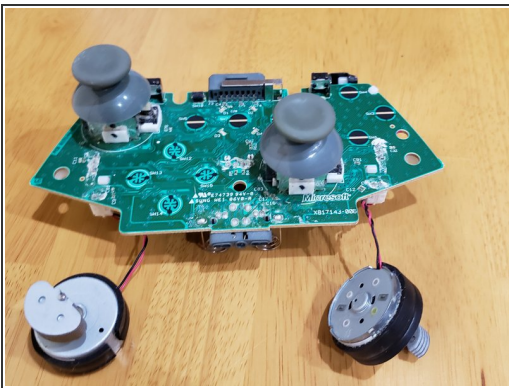
- [Phillips #0 Screwdriver](#) (1)
- [T8 Torx Screwdriver](#) (1)

Step 1 — Introduction



- Remove 7 screws located on the back of the controller using the TR-9 Toolbit

Step 2 — Removing Analog Sticks



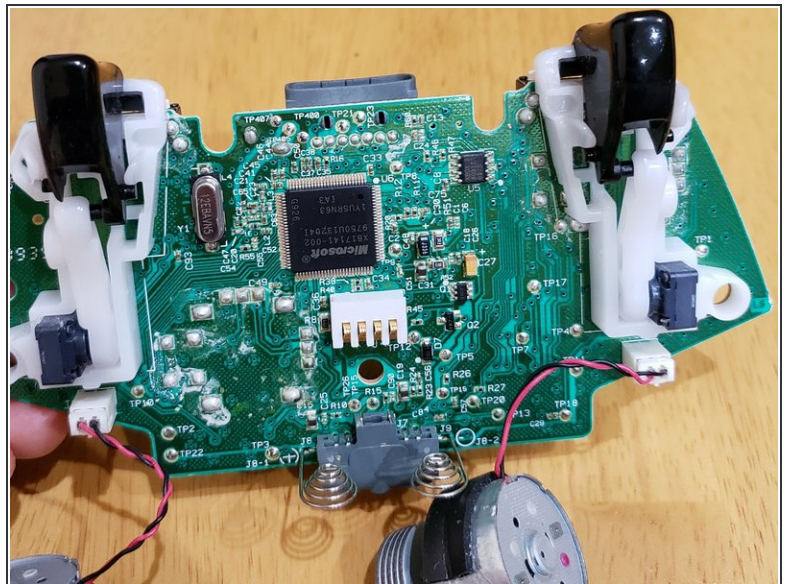
- Then take off and replace the analog sticks if they aren't functioning correctly.

Step 3 — Removing D-Pad



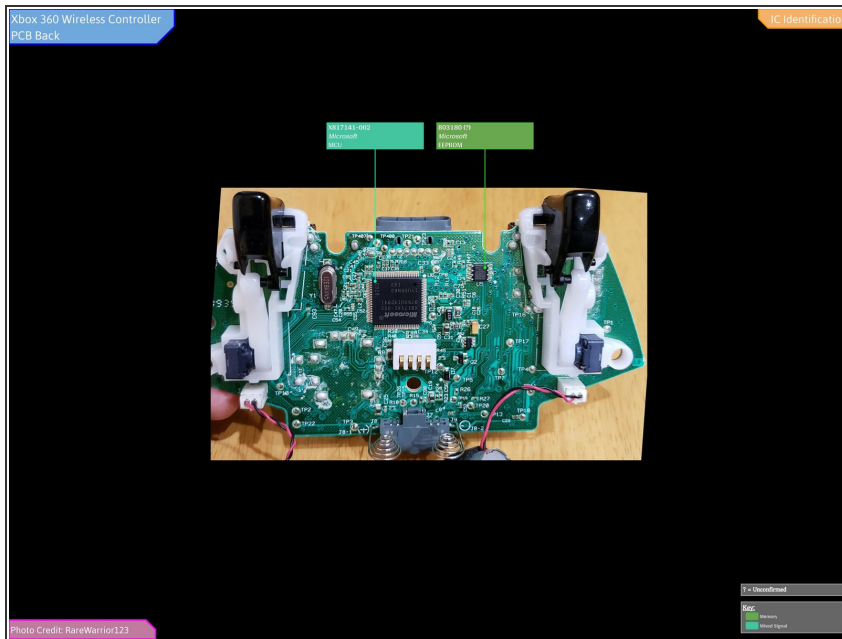
- Remove two screws from the D-Pad using a Phillips #0 Screwdriver, After doing so, you will see two latches underneath the screws that you just removed and you have to press the two latches at the same time to completely remove the D-Pad.

Step 4 — All of the Xbox 360 controller parts




- If you followed these directions successfully this is what the final result should look like.

Step 5



- Full IC Identification:

 You may need to enlarge it to view the text.