



# Braven BRV-X Button Module(s) Replacement

This guide will go through button module replacement for the Braven BRV-X.

Written By: Trey Peterson



---

## INTRODUCTION

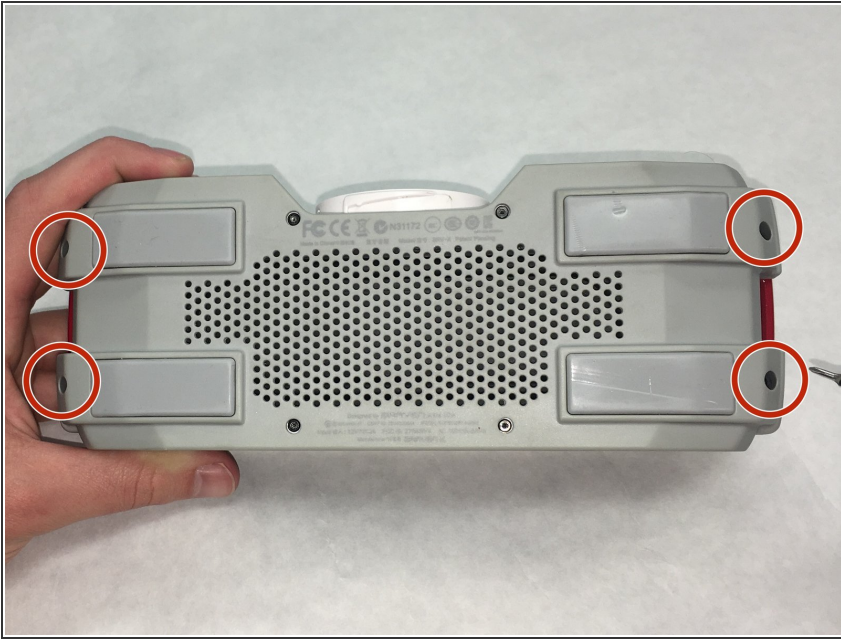
If the buttons on your speaker are not working, they may need to be replaced. Use this guide to replace the button module on your Braven BRV-X.

---

### TOOLS:

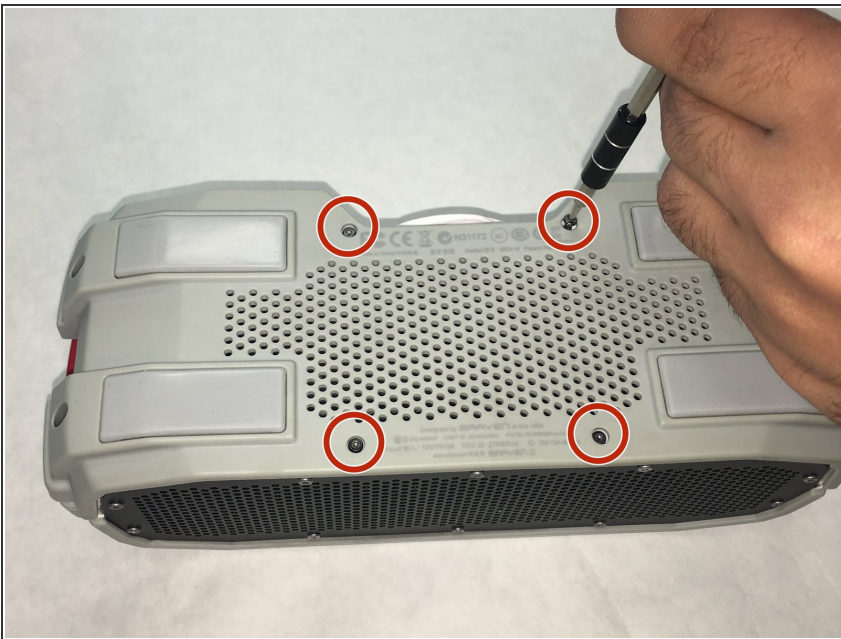
- [Metal Spudger](#) (1)
  - [1.5mm Hex Screwdriver](#) (1)
  - [Phillips #00 Screwdriver](#) (1)
-

## Step 1 — Front Speaker Panel



- Remove four 1.1 cm outer screws in the outer shell using the Phillips #00 screwdriver.

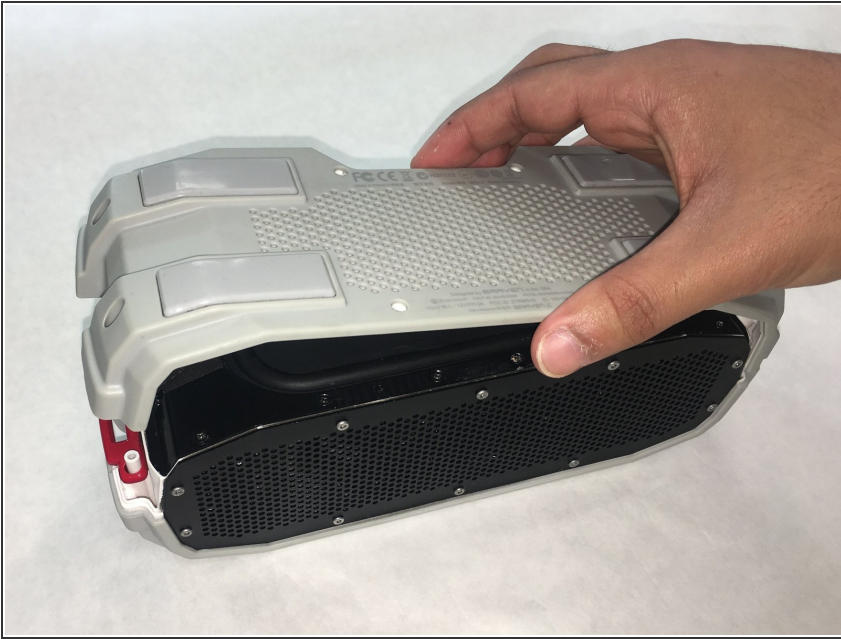
## Step 2



- Remove four 1.3 cm inner screws in the outer shell using the 1.5mm Hex screwdriver.

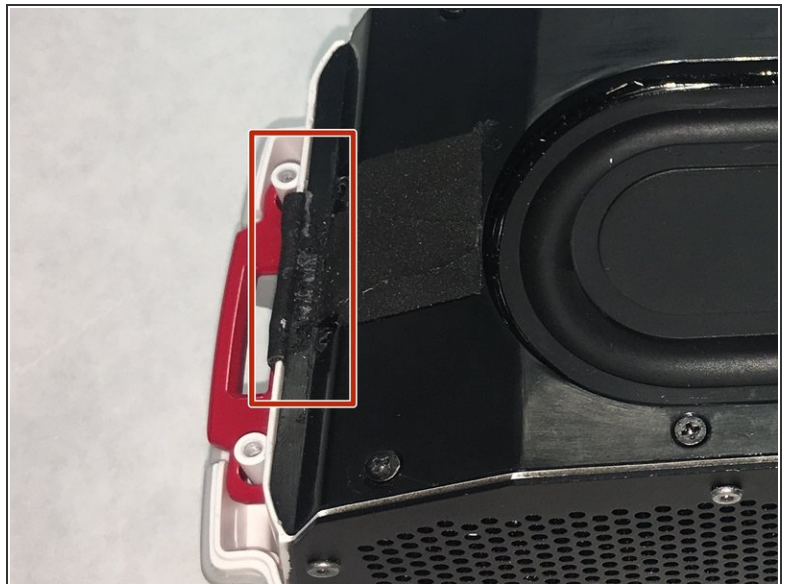


### Step 3



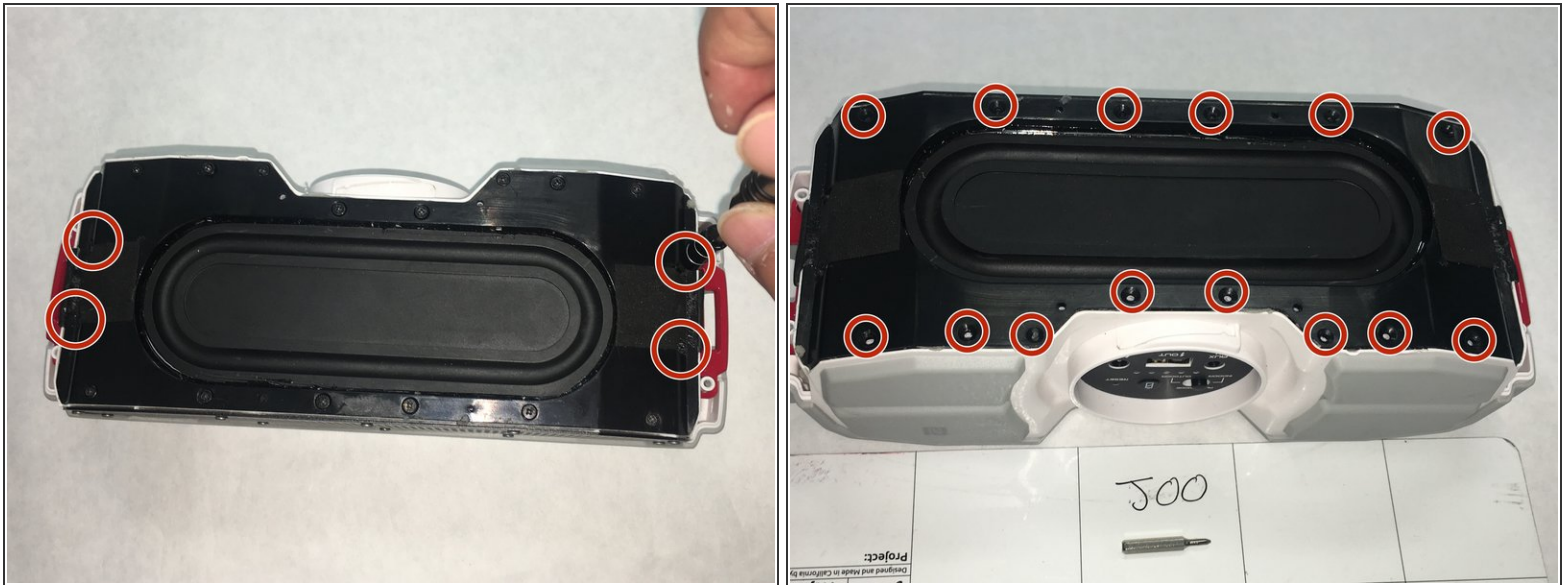
- Gently remove the outer shell.

### Step 4



- Cut adhesive tape on both sides.

## Step 5



- Remove eighteen 0.9cm screws in the inner shell using the Phillips #00 screwdriver.

## Step 6



- Pry open the glued inner shell using a spudger around all sides of the shell.

⚠ Don't use too much pressure as that could cause damage to the plastic.



## Step 7



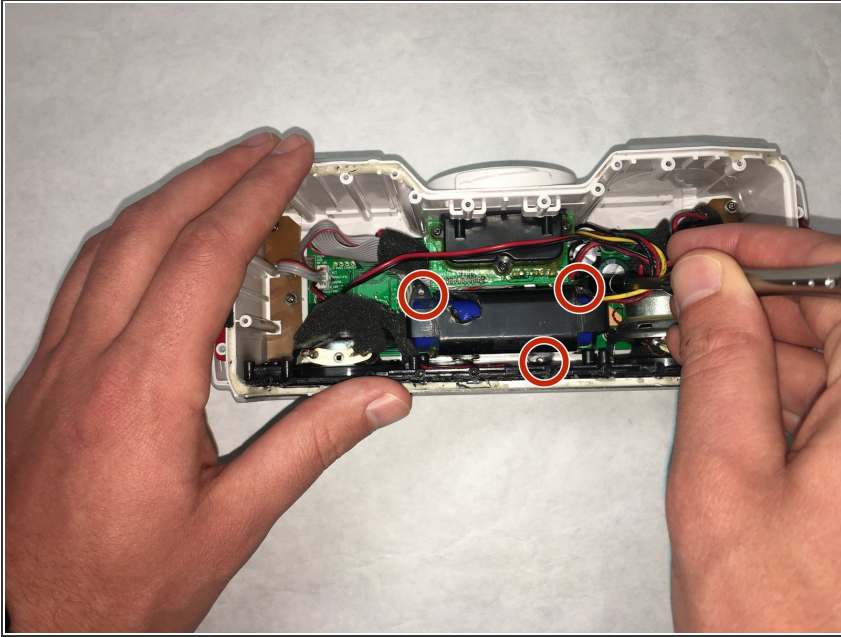
- Remove ten 0.7 cm screws in the front plate using the 1.5 mm Hex screwdriver.

## Step 8



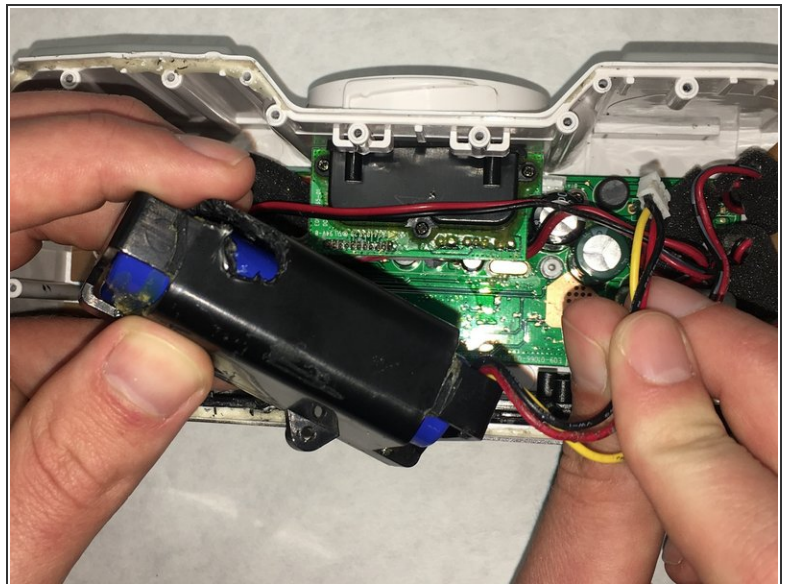
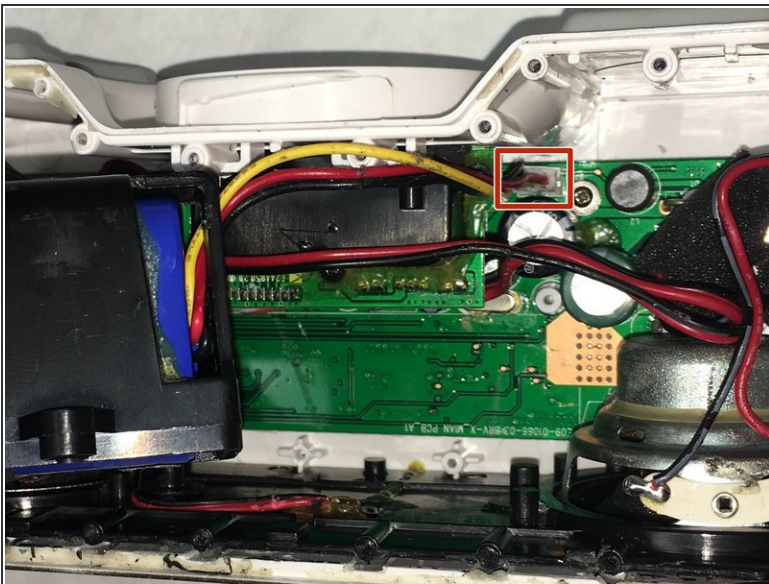
- Use a spudger to open the front speaker plate.

## Step 9



- Remove three 1.0 cm screws from the battery unit.
- ⓘ It is recommended (but not required) to remove the battery.

## Step 10



- Disconnect the ribbon cable attached the main board.

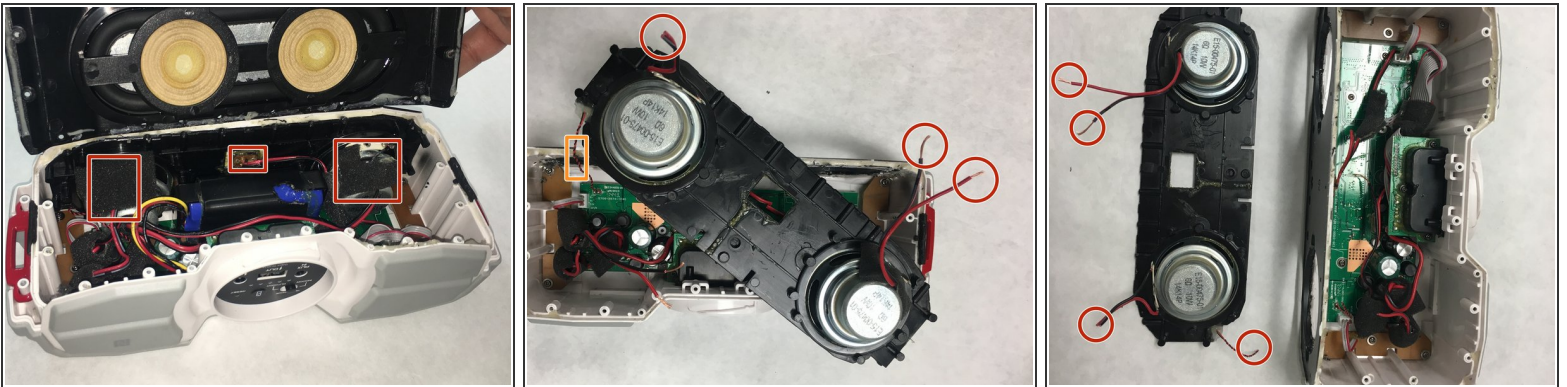


## Step 11



- Pry open the second plate holding in the speaker using a spudger around all sides.
- ❗ It is recommended to use a spudger to remove the heavily glued areas between the plates before prying.
- ⚠ Don't use too much pressure as that could cause damage to the plastic.

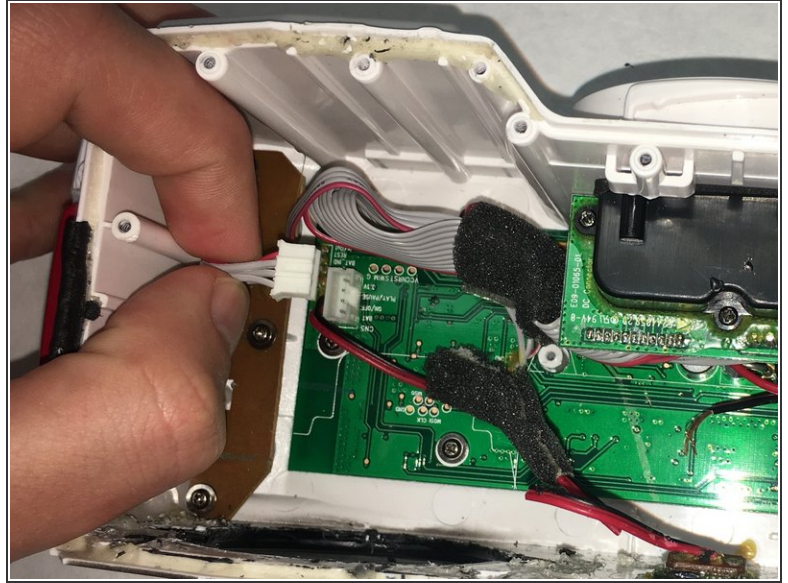
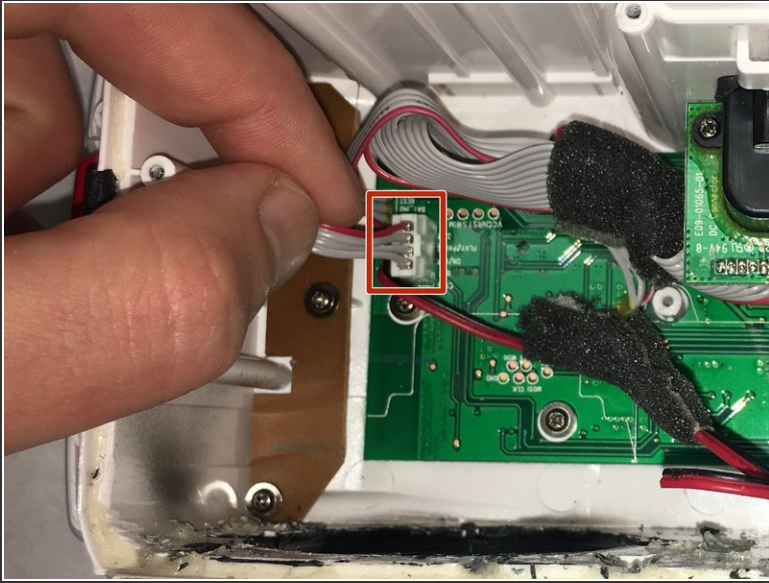
## Step 12



- Cut the 20 gauge wires attached to the front IR sensor and two speaker wires.
- ❗ Leave enough length on the wire to work with it afterwards.
- Cut the 22 gauge wire attached in the corner.
- Solder the new speaker plate during reassembly.
- ❗ To properly solder and desolder connections, visit the [How to Solder and Desolder Connections](#) guide.

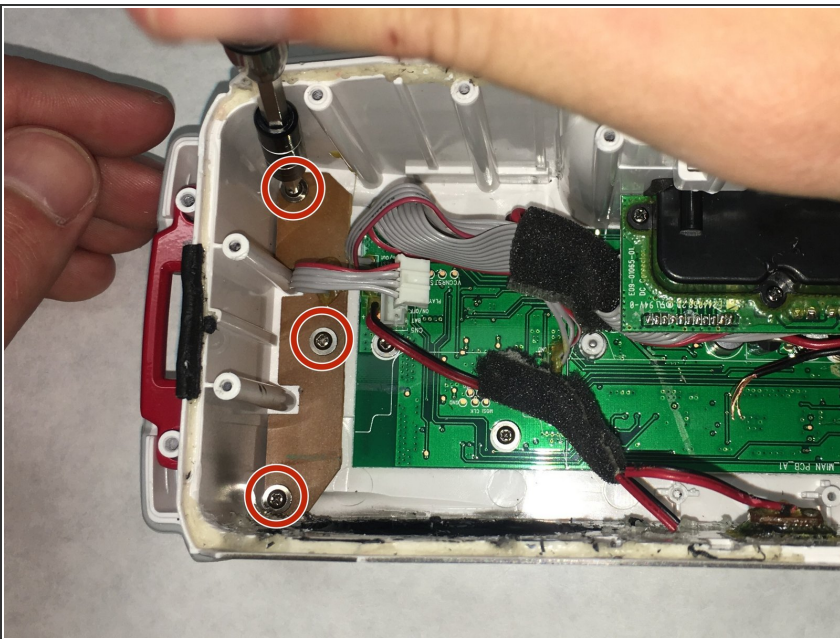


## Step 13 — Button Module(s)



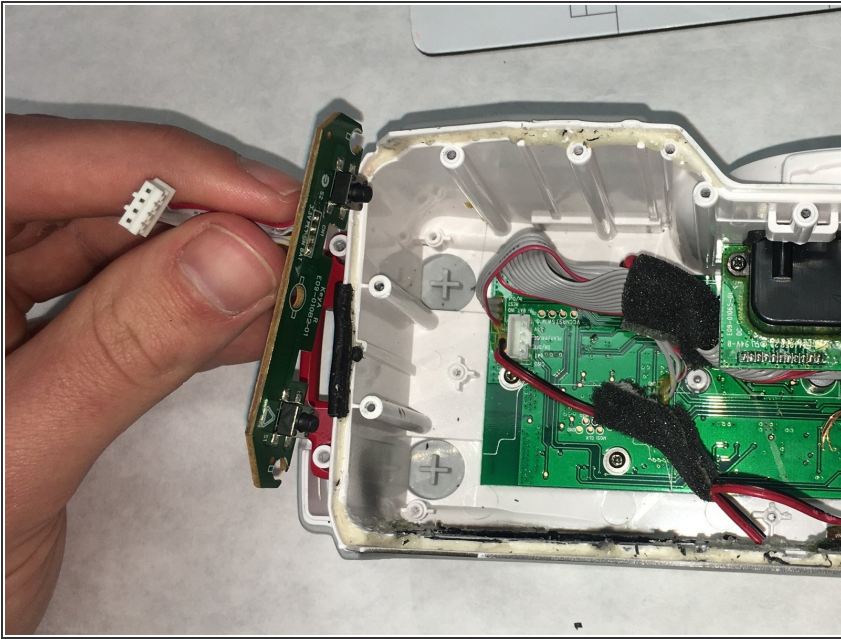
- Remove the ribbon cable attached to the main board.
- ⓘ Pull from the clip and not from the cable.

## Step 14



- Remove three 0.7 cm screws from the button module(s) using the Phillips #00 screwdriver.

## Step 15



- Gently lift the button module from the enclosure.

To reassemble your device, follow these instructions in reverse order.