



# Samsung Galaxy Note Edge Volume Button Replacement

This guide will show you how to remove and replace the volume button in your Samsung Galaxy Note Edge.

Written By: Lizzie Todd



## INTRODUCTION

If you are unable to adjust the volume on your device, the volume switch may be faulty. Use this guide to replace the volume button in your device.

---

### TOOLS:

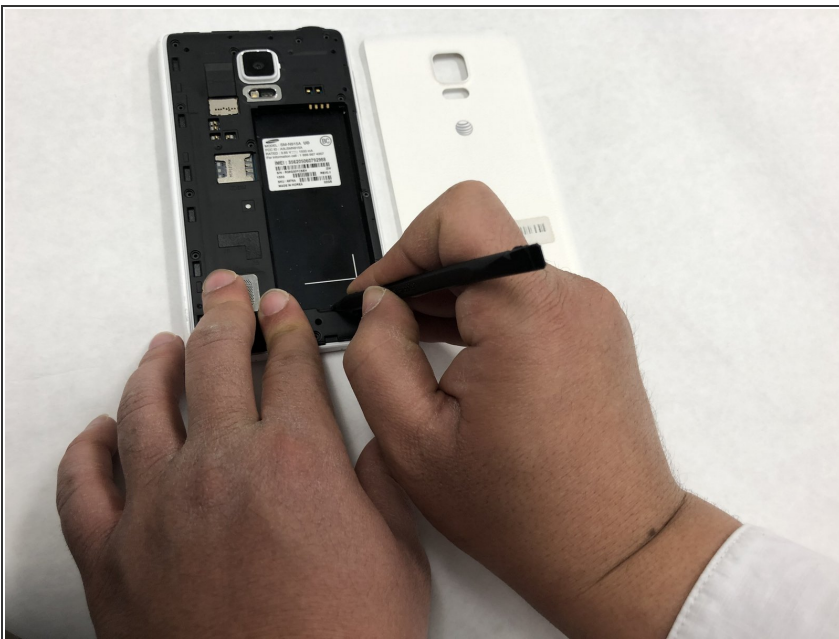
- [Spudger](#) (1)
  - [Phillips #000 Screwdriver](#) (1)
  - [Tweezers](#) (1)
-

## Step 1 — Volume Button



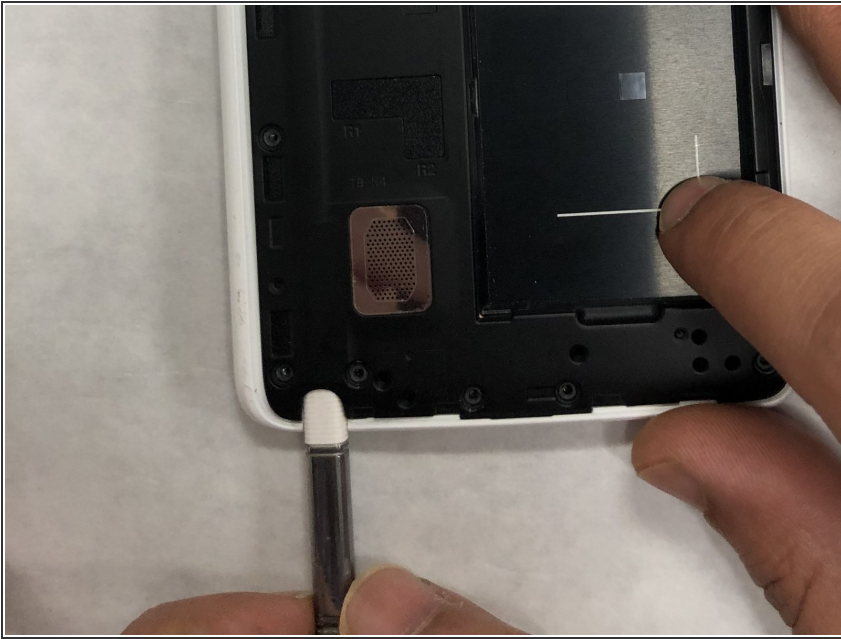
- Place your device flat down on a clean surface.
- Use a Spudger to remove the back cover using the notch at the top left.

## Step 2



- Use a Spudger to remove the battery using the notch located underneath the battery.
- ⓘ Note: During the creation of this guide, we did not have access to a battery.

### Step 3



- Remove the stylus from its sheathe.

### Step 4



- Use a Philips #000 Screwdriver to remove the fifteen 4mm screws.

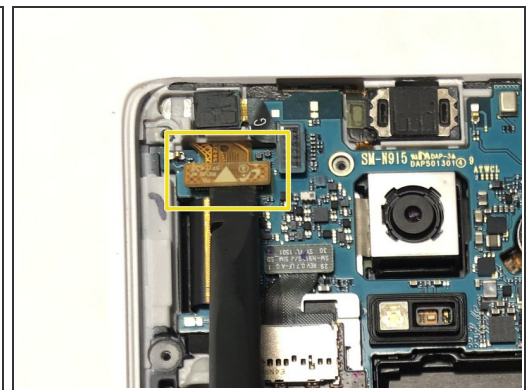
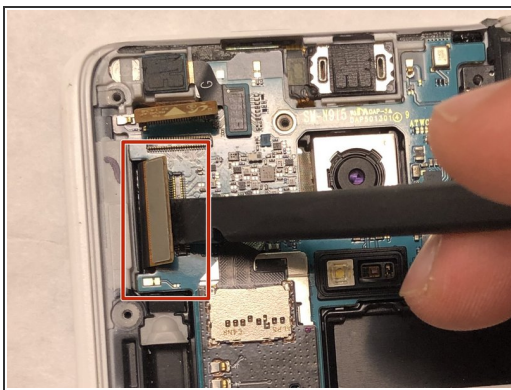


## Step 5



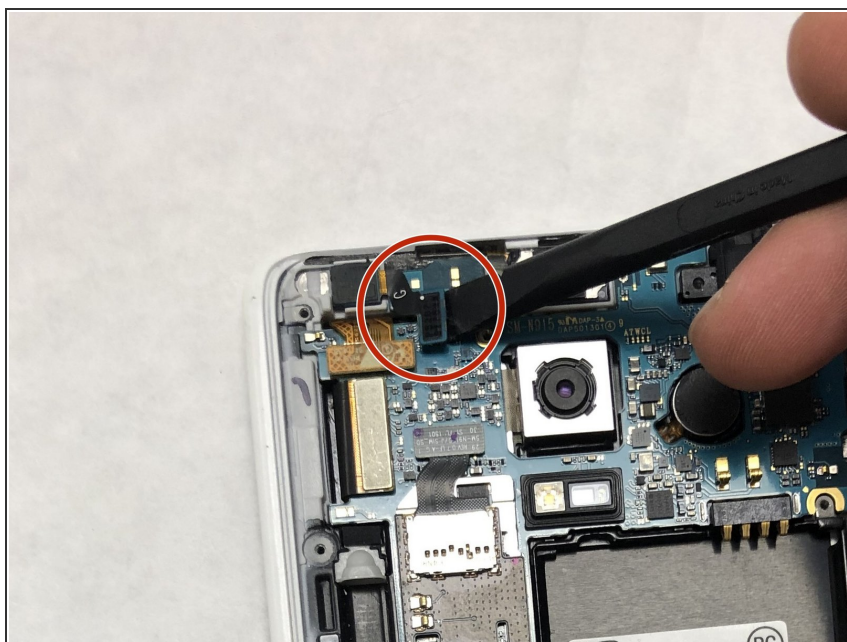
- Use a Spudger to remove the black chassis and expose the motherboard.

## Step 6



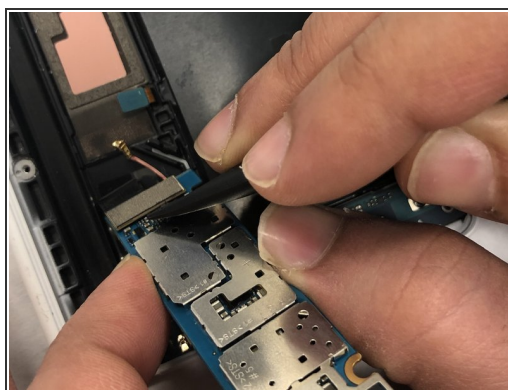
- Use a Spudger to disconnect the following connections:
- Connection 1
- Connection 2
- Connection 3


## Step 7



- Remove the connection for the front camera.

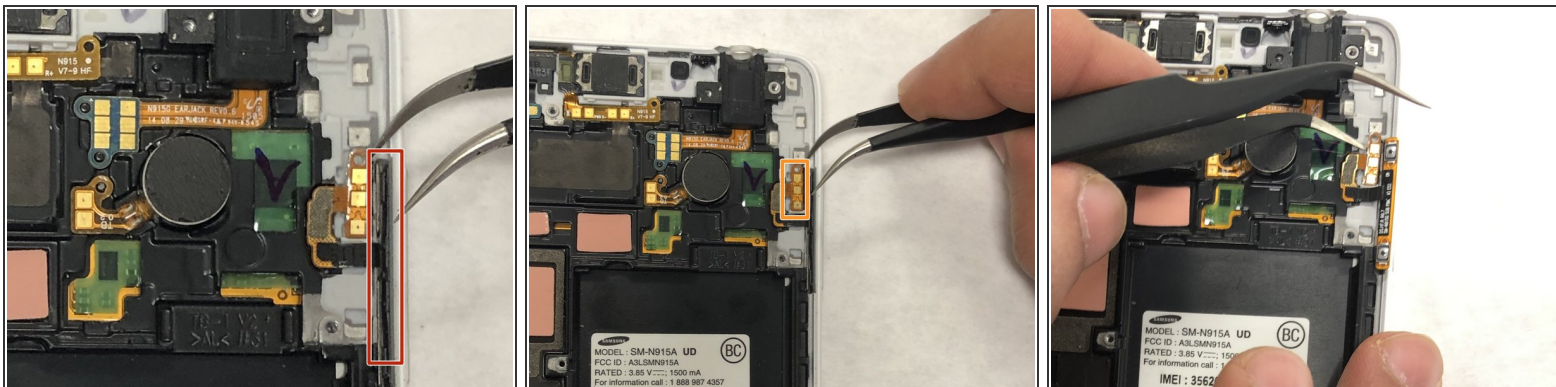
## Step 8



 Do not try to completely remove the motherboard until the final step.

- Use a Spudger to gently lift the motherboard.
- Remove the connection of the motherboard and the daughter board.
- Remove the motherboard.

## Step 9



- Remove the volume button panel.
- Remove the volume button connection.
- Remove the volume button entirely.

To reassemble your device, follow these instructions in reverse order.