



Samsung Galaxy Note Edge Front Camera Replacement

This guide will accomplish how to change the front camera. This guide is for a Samsung Galaxy Note Edge.

Written By: Lizzie Todd



INTRODUCTION

If your device isn't properly taking photos and video, the camera may be faulty. Use this guide to replace the front camera in your device.

Step 1 — Front Camera



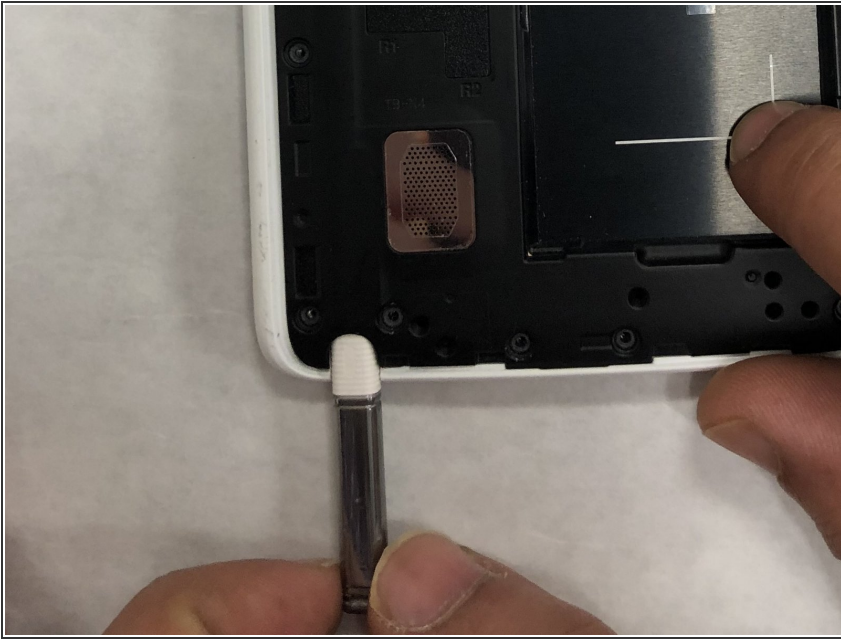
- Place your device face down on a clean surface.
- Use a Spudger to remove the back cover using the notch at the top left.

Step 2



- Use a Spudger to remove the battery using the notch located underneath the battery.
- Note: During the creation of this guide, we did not have access to a battery.

Step 3



- Remove the stylus from its sheathe.

Step 4



- Use a Philips #000 Screwdriver to remove the fifteen 4mm screws.

Step 5



- Use a Spudger to remove the black chassis and expose the motherboard.

Step 6



- Use a Spudger to separate the camera's connector.
- Use a Spudger to remove the camera from its slot.

To reassemble your device, follow these instructions in reverse order.