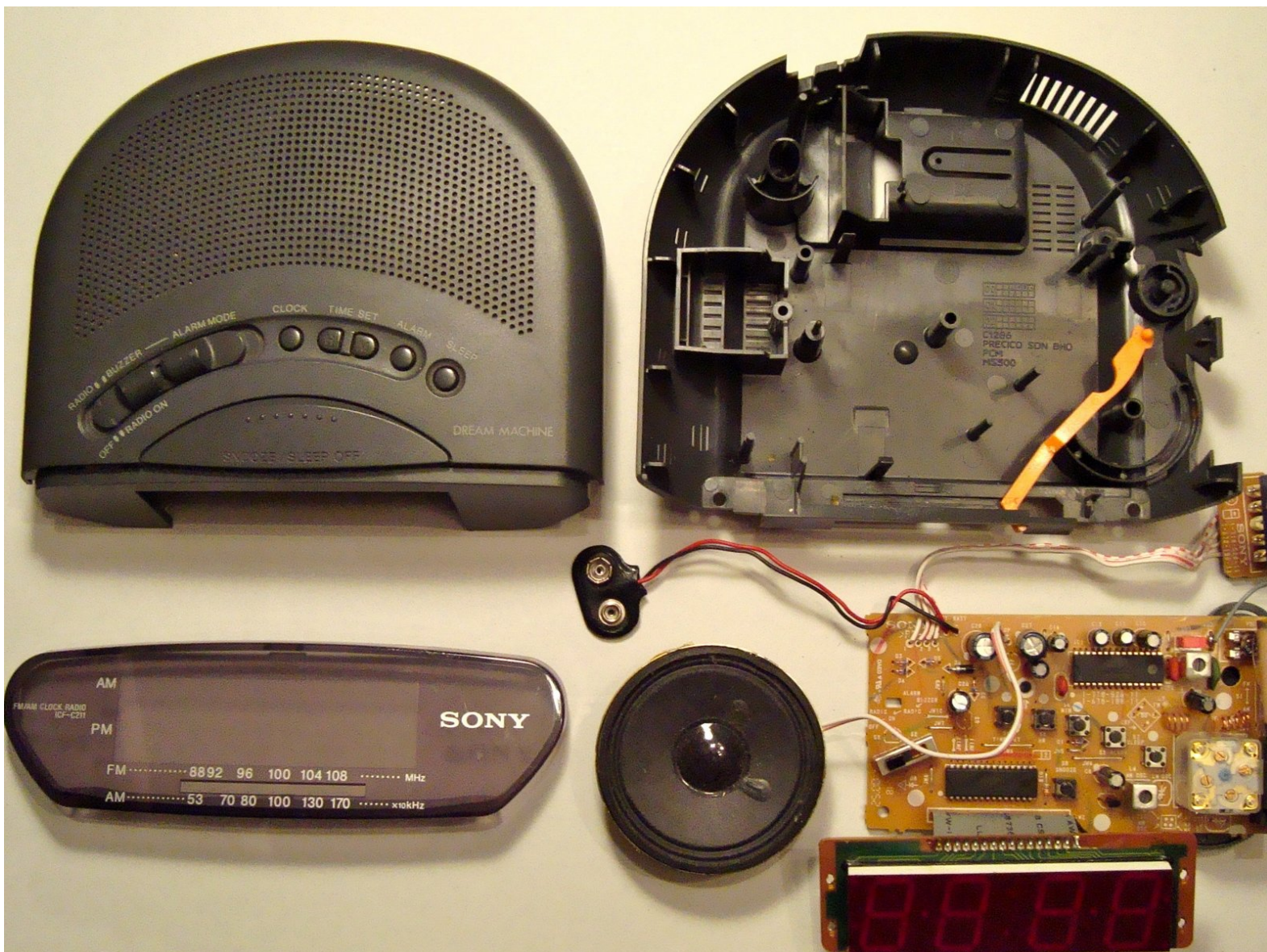




# Sony Dream Machine ICF-C211 Teardown

Written By: matte18



---

## INTRODUCTION

While I was walking around my overcrowded basement I ran into something I stopped using years ago when I bought a super technological cellphone that did everything and more than my older morning companion. After checking if it was still working i decided to tear it down and see how this little gadget saved my life so many times in the morning..



### TOOLS:

- [Phillips #1 Screwdriver](#) (1)
  - [Flathead 3/32" or 2.5 mm Screwdriver](#) (1)
-



## Step 1 — Sony Dream Machine ICF-C211 Teardown



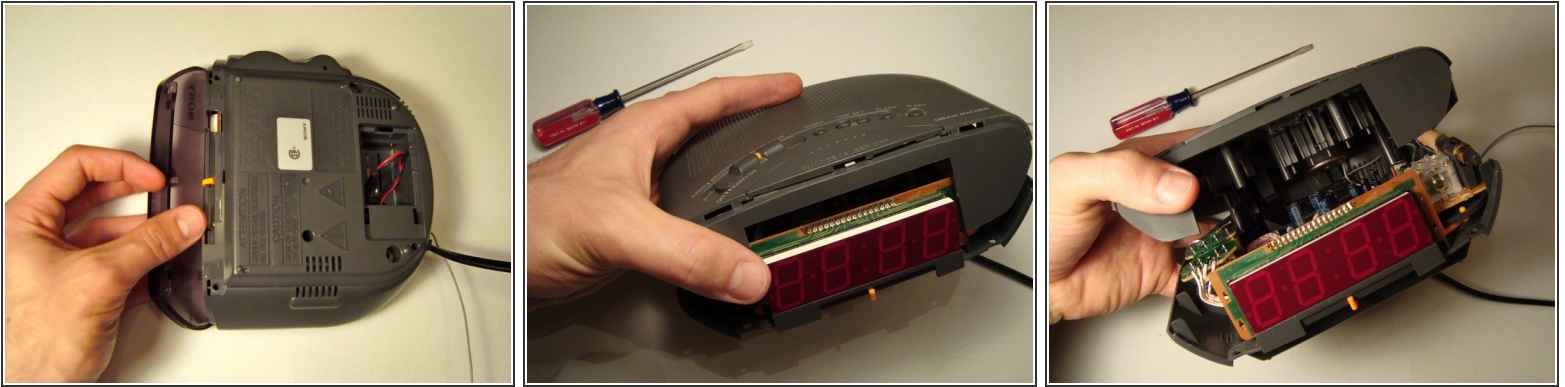
- How many of you at least once in your life wanted to smash your alarm clock against the wall to make it stop beeping?? Well today we're gonna do something worse... we're going to tear it down!!

## Step 2



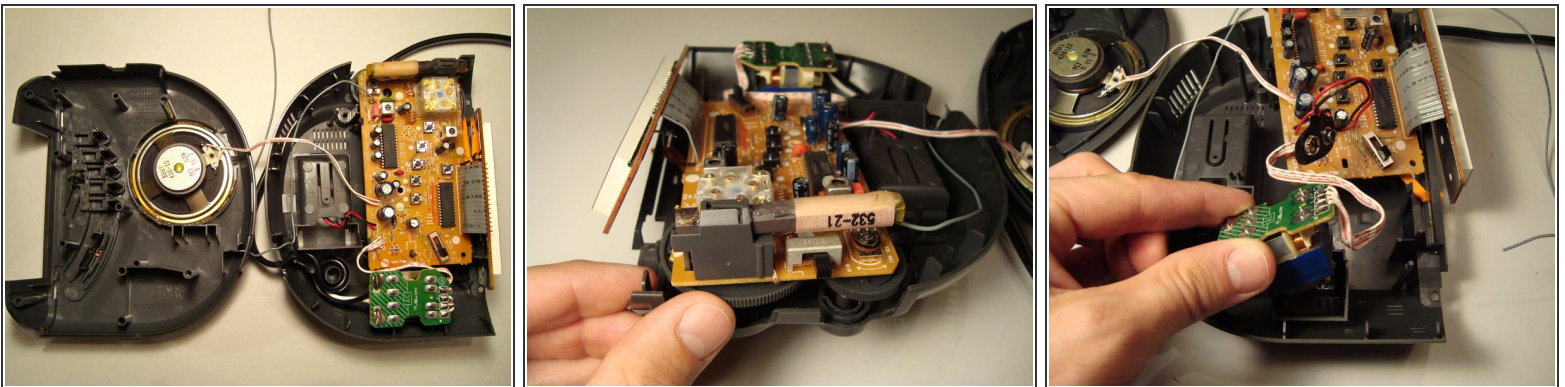
- Let's turn the alarm clock upside down, regardless of the risk of electric shock as stated by the caution sign, we proceed using a regular Phillips screwdriver.
- As you can see the Sony Dream Machine has a battery power backup just to make sure it'll ruin your dreams by going off even if the power is out! Diabolical..

### Step 3



- After removing the screws, lift the front clear plastic panel in front of the LED.
- Now flip the alarm clock. Lift the top gently to avoid breaking any plastic component inside, because you won't find any screws inside, everything is locked with plastic joints and glue...interesting..

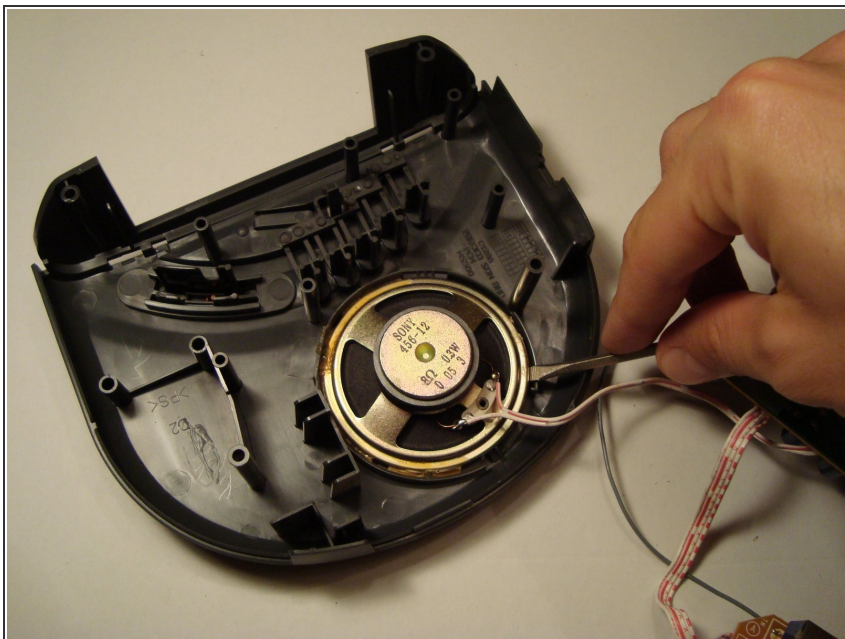
### Step 4



- Here it is.. your alarm clock split in half.
- Now we need to remove the circuit board... nothing easier... just lift it from the side with your thumb and there you go!
- Before we move on to the top half of the alarm clock we need to remove the AC, just like the circuit board use your thumb for some leverage and it will easily pop out of its case.

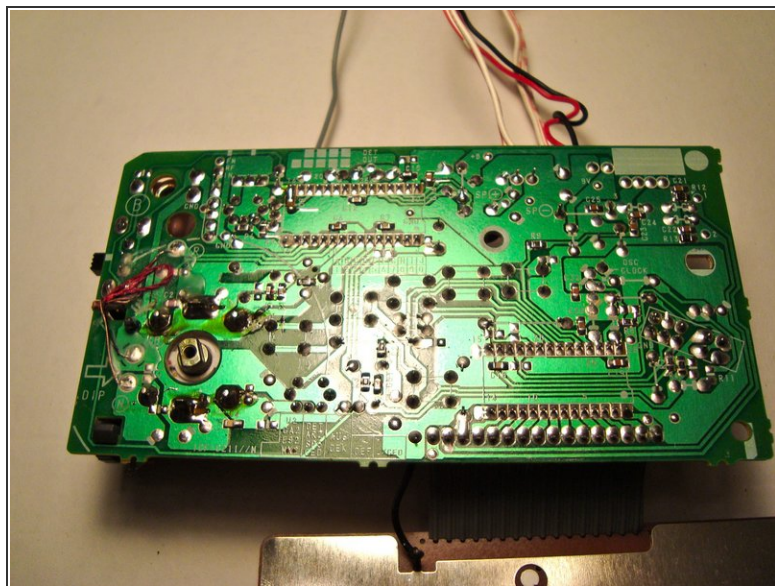
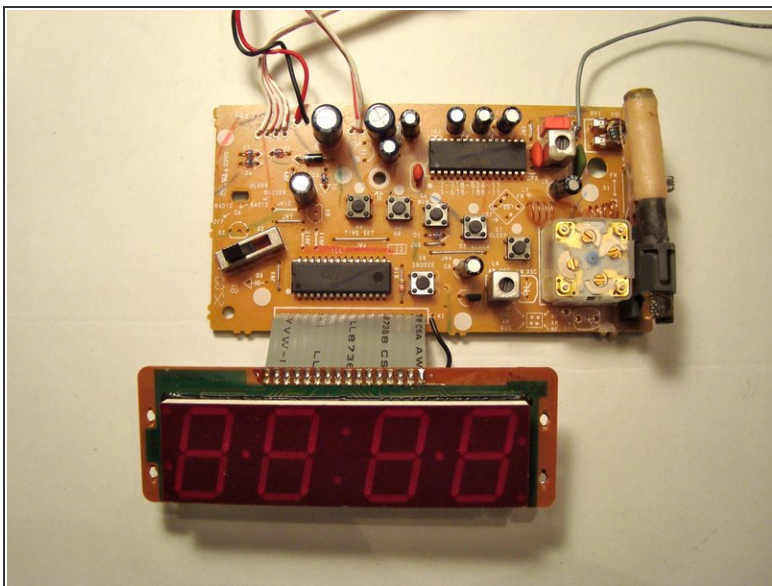


## Step 5



- This is probably the most fun part of the teardown: manage to unglue the speaker off the case... I suggest you grab a flathead screwdriver and start digging.. just be careful not to damage too much the plastic ring around it or you won't be able to put it back on!

## Step 6



- Here are some pictures of the circuit board.
- Our teardown is now complete!! Good luck putting it back together!

To reassemble your device, follow these instructions in reverse order.