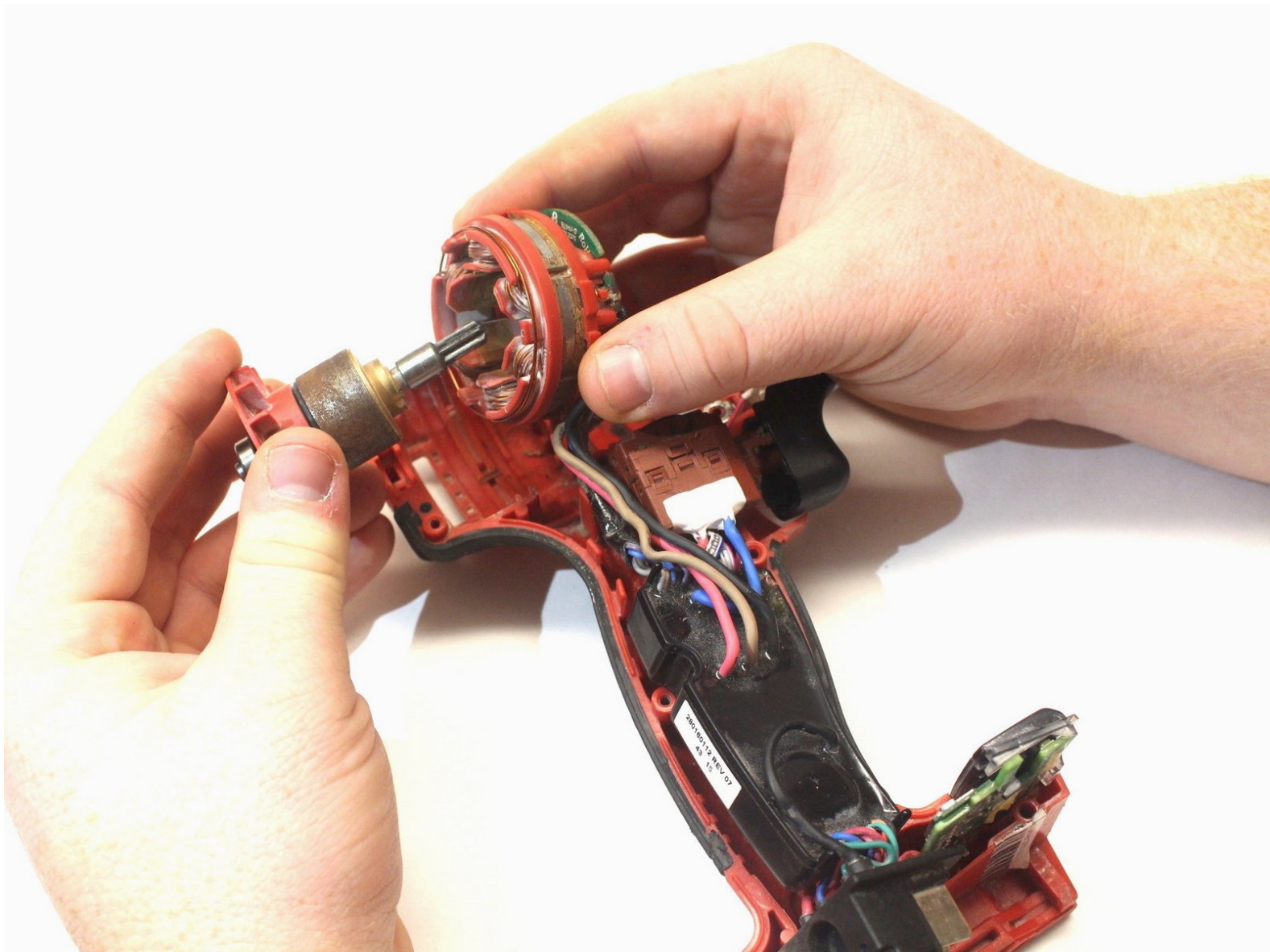




Milwaukee Hex Impact Driver 2750-20 Chuck Drive Shaft Replacement

This informative guide explains how to replace the Milwaukee Hex Impact Driver 2750-20 chuck drive shaft.

Written By: Charles Putnam



INTRODUCTION

The following repair guide shows how to remove and replace the chuck drive shaft in a Milwaukee Hex Impact Driver 2750-20.



TOOLS:

- [T9 Torx Screwdriver](#) (1)
 - [Spudger](#) (1)
-

Step 1 — Outer Casing



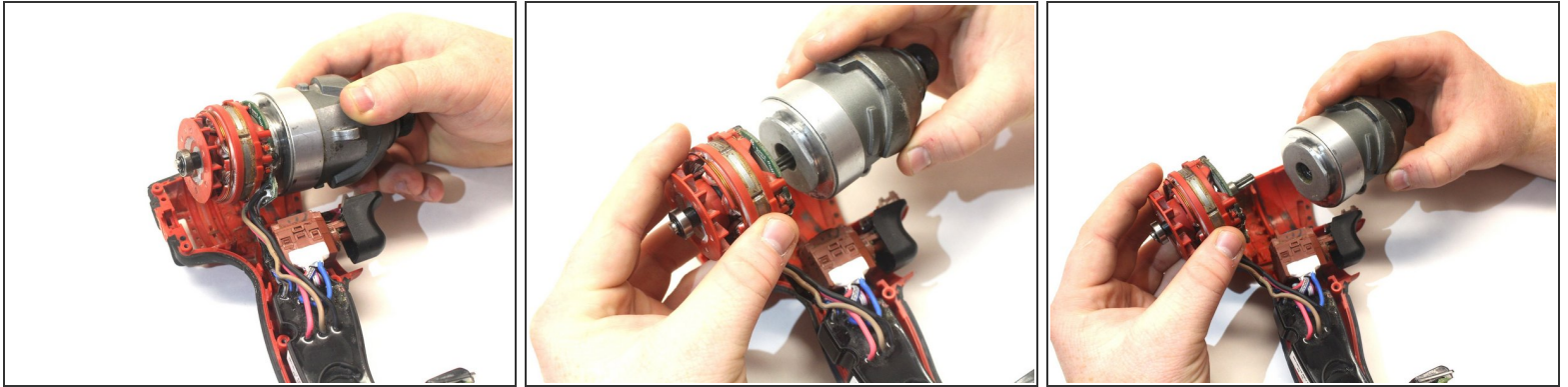
- Remove the five T9 15.5 mm screws.
- Remove the single T9 19.5mm screw.
- Remove the two T9 37mm screws.

Step 2



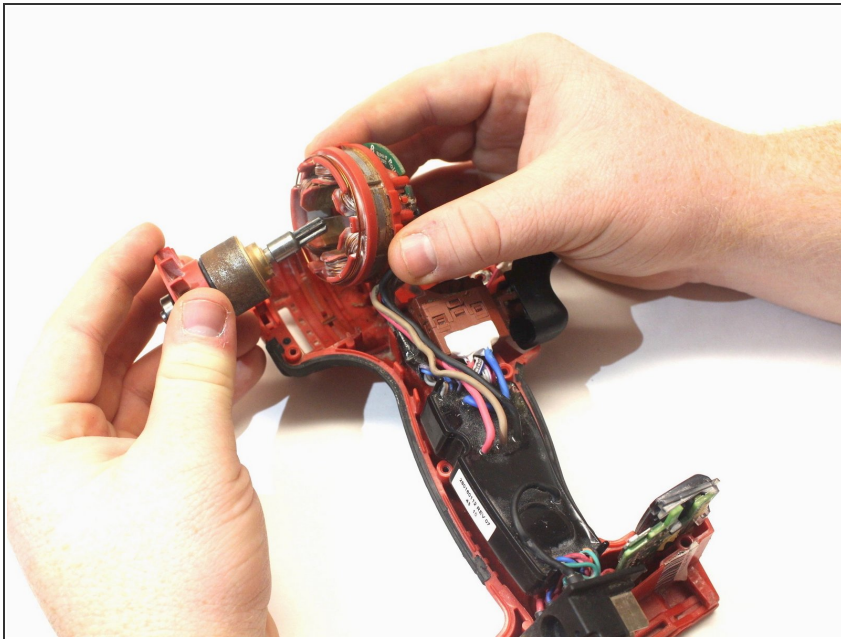
- Remove the drill casing to expose the drill's interior parts.

Step 3 — Chuck Drive Shaft



- Pulling directly outward, remove the driver head from the motor assembly by picking it up out of the casing.

Step 4



- Remove the drive shaft assembly from the motor coils.
- ⓘ There will be resistance when removing the drive shaft as there is magnetism working against you.

To reassemble your device, follow these instructions in reverse order.