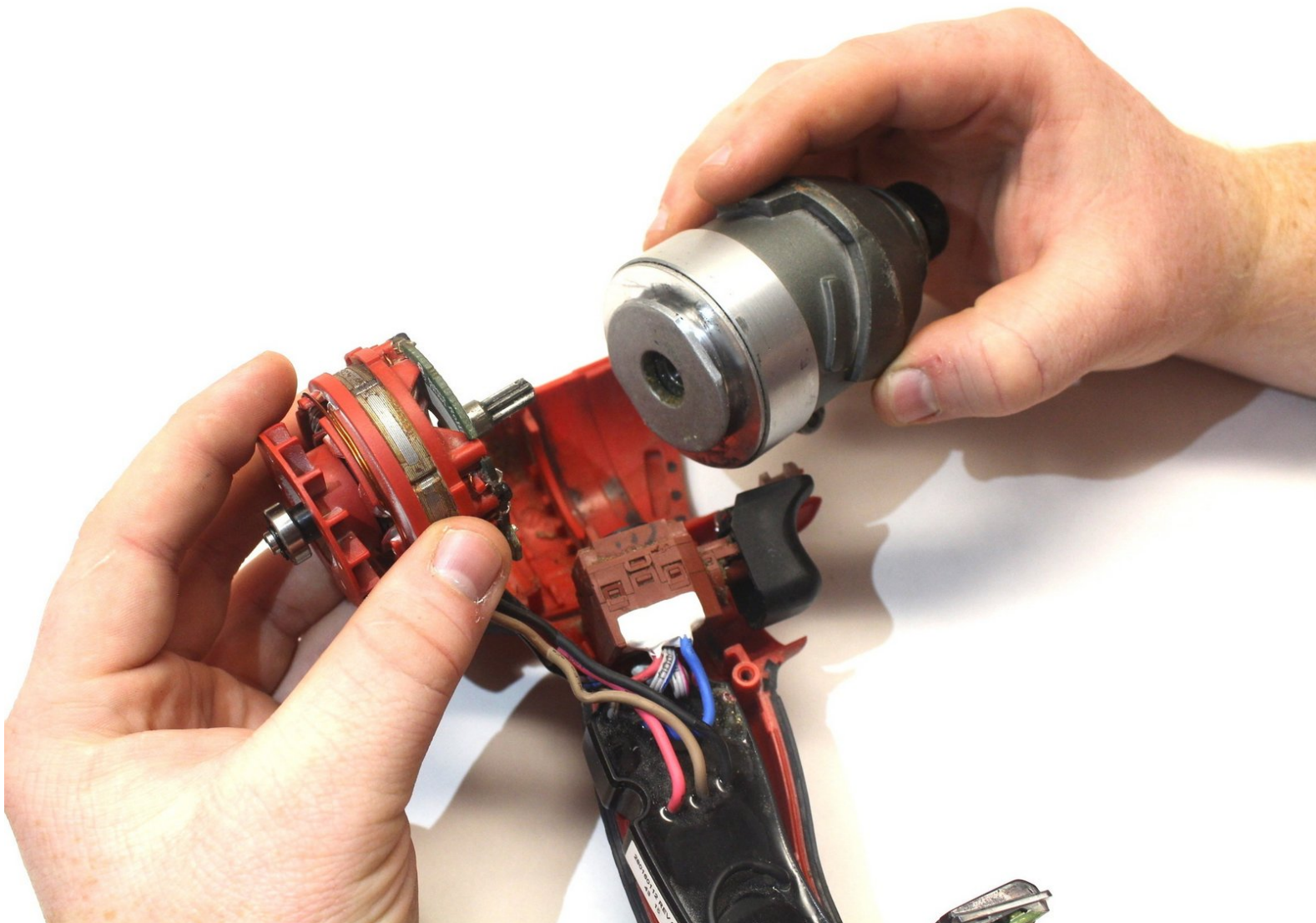




Milwaukee Hex Impact Driver 2750-20 Driver Head Replacement

This informative guide explains how to replace a Milwaukee Hex Impact Driver 2750-20 driver head.

Written By: Charles Putnam



INTRODUCTION

The following repair guide shows how to remove and replace the Milwaukee Hex Impact Driver 2750-20 driver head in an easy and effective manner.



TOOLS:

- [Spudger](#) (1)
 - [T9 Torx Screwdriver](#) (1)
-

Step 1 — Outer Casing



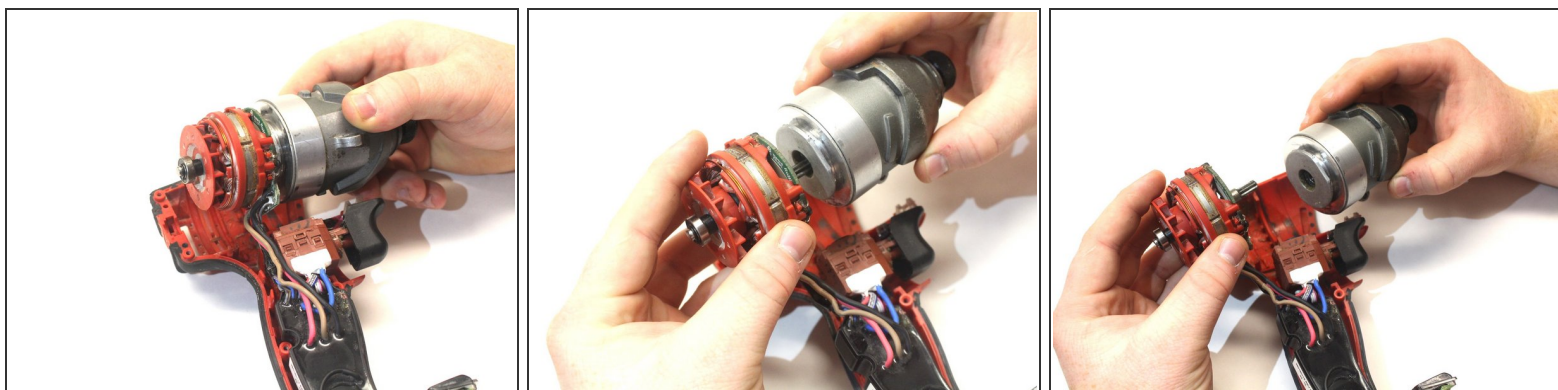
- Remove the five T9 15.5 mm screws.
- Remove the single T9 19.5mm screw.
- Remove the two T9 37mm screws.

Step 2



- Remove the drill casing to expose the drill's interior parts.

Step 3 — Driver Head



- Lift the driver head and motor assembly directly out of the outer casing.
- Pull the driver head away from the motor assembly, separating the two.

To reassemble your device, follow these instructions in reverse order.