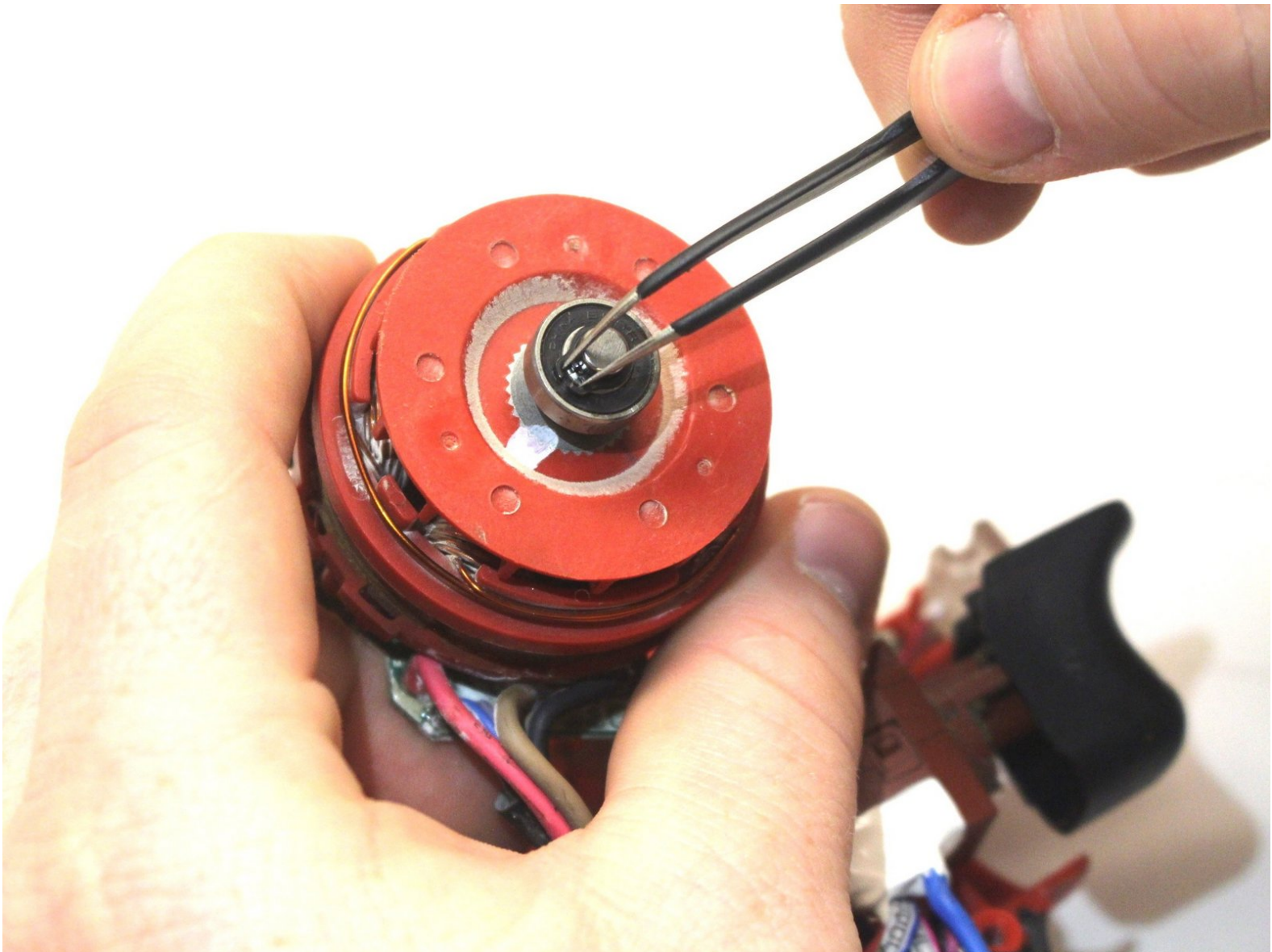




# Milwaukee Hex Impact Driver 2750-20 Output Shaft Bearing Replacement

This informative guide explains the process of replacing the output shaft bearing for a Milwaukee Hex Impact Driver 2750-20.

Written By: Charles Putnam



---

## INTRODUCTION

The following repair guide shows how to remove and replace the output shaft bearing in an Milwaukee Hex Impact Driver 2750-20.

---



### TOOLS:

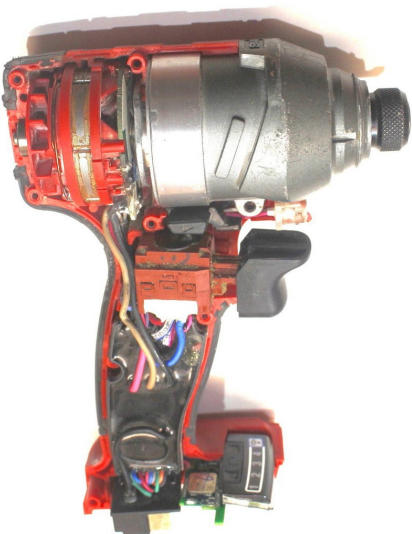
- [T9 Torx Screwdriver](#) (1)
  - [Spudger](#) (1)
  - [Tweezers](#) (1)
-

## Step 1 — Outer Casing



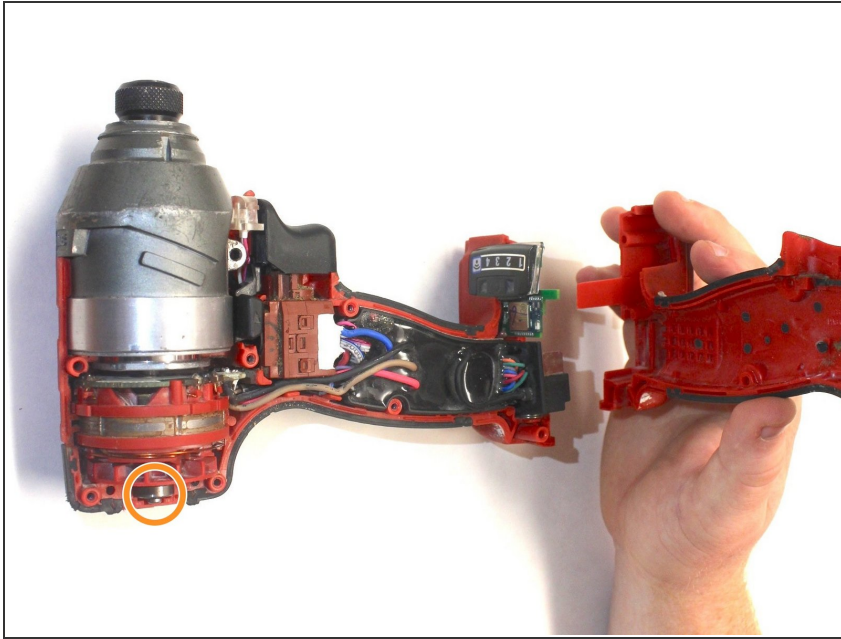
- Remove the five T9 15.5 mm screws.
- Remove the single T9 19.5mm screw.
- Remove the two T9 37mm screws.

## Step 2



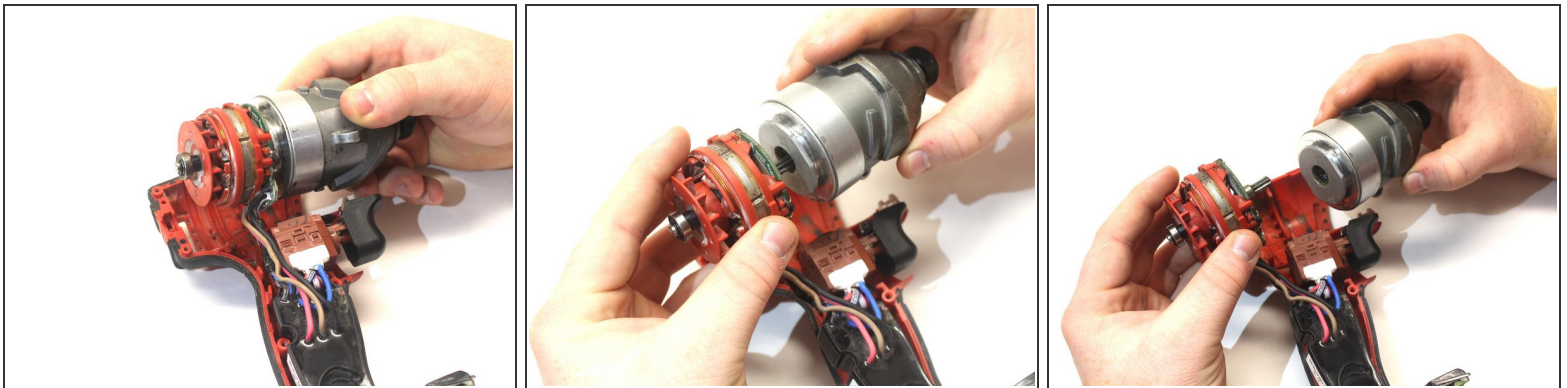
- Remove the drill casing to expose the drill's interior parts.

### Step 3 — Output Shaft Bearing



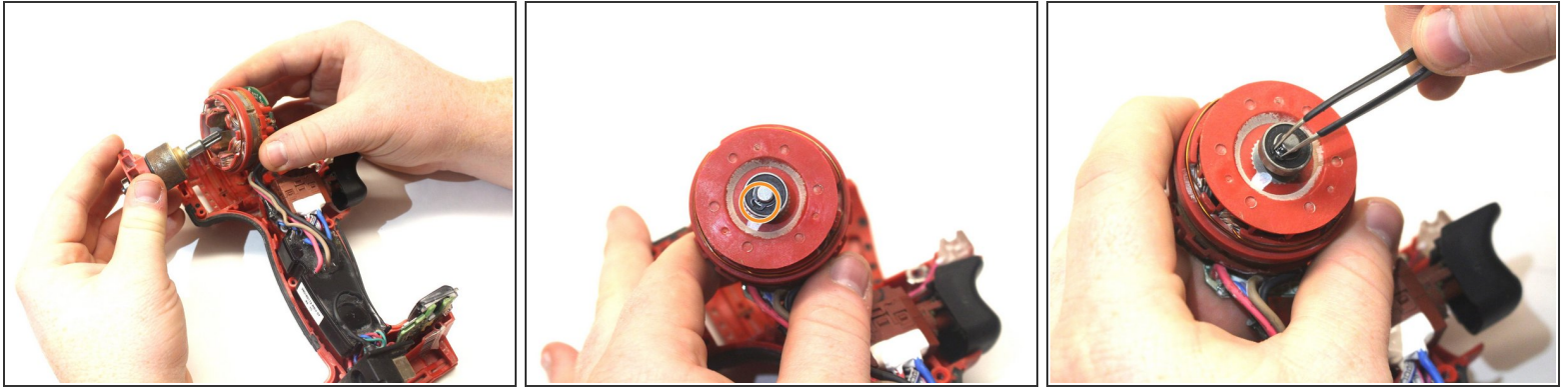
- Once the interior is open locate the output shaft driver pictured at the left of the screen.

### Step 4



- Lift the driver head and motor assembly directly out of the outer casing.
- Pull the driver head away from the motor assembly, separating the two.

## Step 5



- Remove the fan and the drive shaft assembly from the motor core assembly.
- Using a pair of tweezers, remove the retaining ring.
- Remove the old bearing and reinstall the new retaining clip.

To reassemble your device, follow these instructions in reverse order.