



How to Repair a Jammed Nozzle on a Perfume Bottle

While applying perfume, one may press down too...

Written By: Tiera Forde



INTRODUCTION

While applying perfume, one may press down too hard causing the nozzle or sprayer to be jammed. This repair project involves a step-by-step procedure guide on how to fix a jammed nozzle on a perfume bottle. This repair requires you take extra safety precautions when removing the nozzle because the bottle is made of glass which can break easily if not gently handled.

TOOLS:

[Sewing Needle](#) (1)

[Slip Joint Pliers](#) (1)

Step 1 — How to Repair a Jammed Nozzle on a Perfume Bottle



- Remove the nozzle from the bottle by taking the pliers and unscrewing the nozzle counterclockwise.
- ① If the bottle is made from glass, untwist the nozzle from the bottle gently and slowly as much as possible to prevent the bottle from being damaged.

Step 2



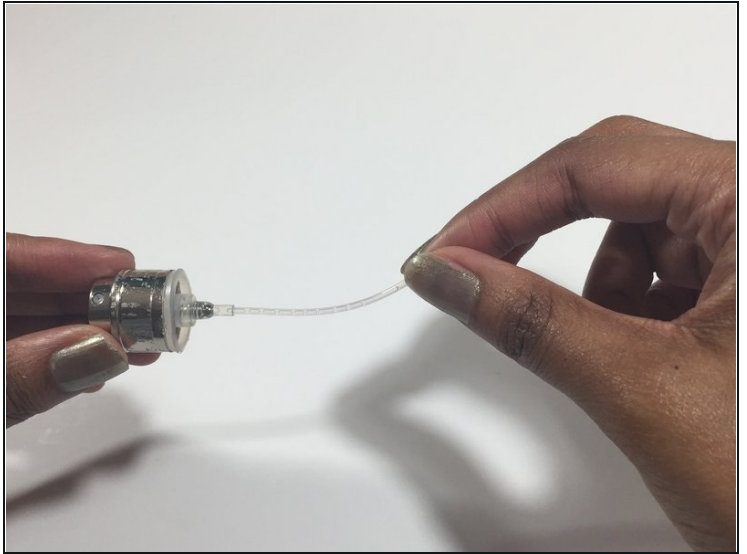
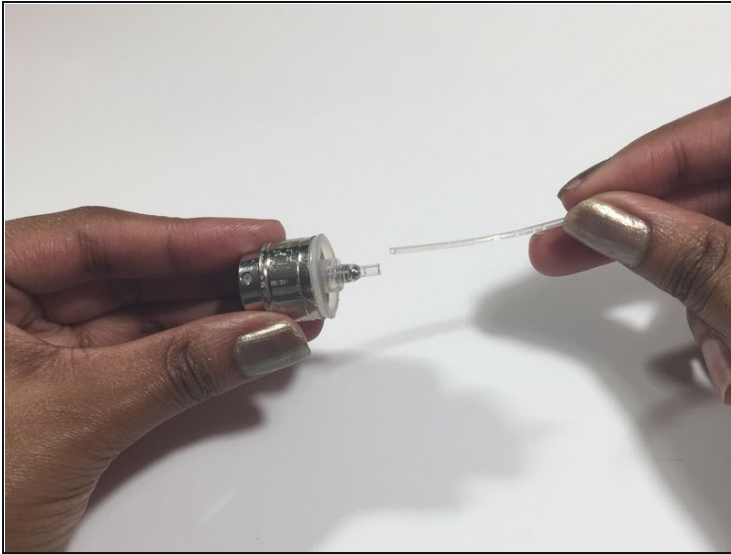
- Using your hand, gently pull out the tube so that the metal ball is exposed.

Step 3



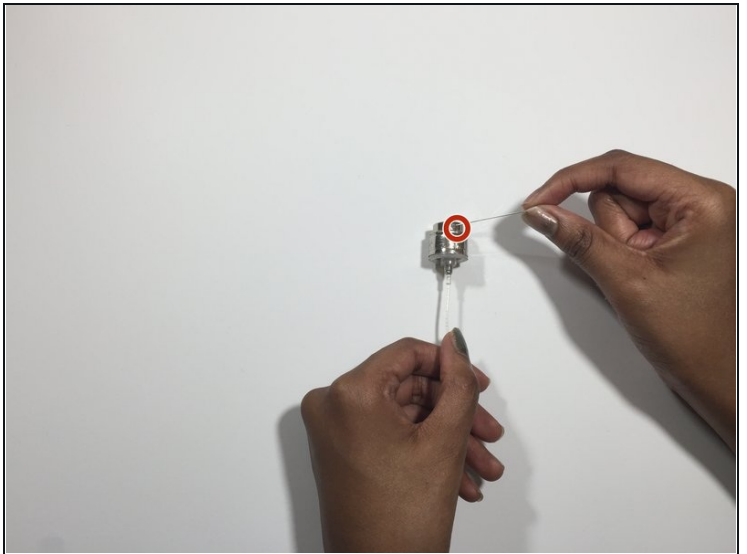
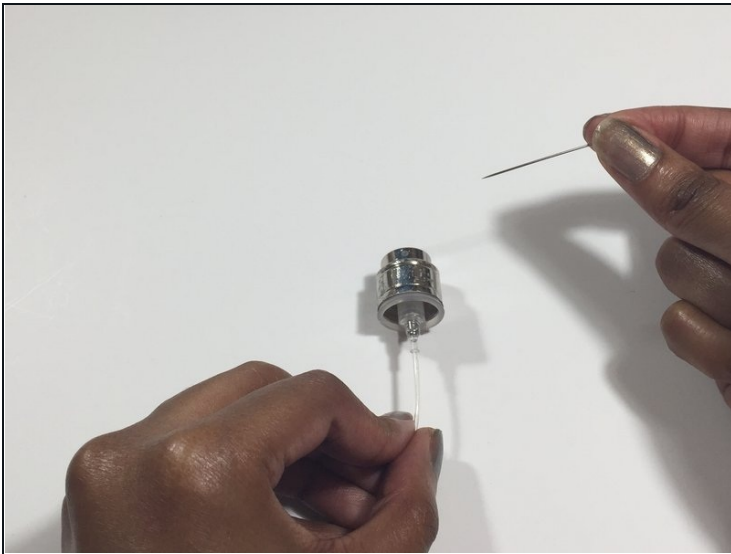
- Insert a sewing needle into the opening to adjust the metal ball that is stuck in the spring.
- ① The reason why the nozzle of the perfume bottom is jammed is because the metal ball is stuck in the spring. This prevents the pump from retracting. The metal ball is supposed to be directly at the bottom of the spring which allows the pump to retract and the product to protrude out of the bottle when you press down on the nozzle.

Step 4



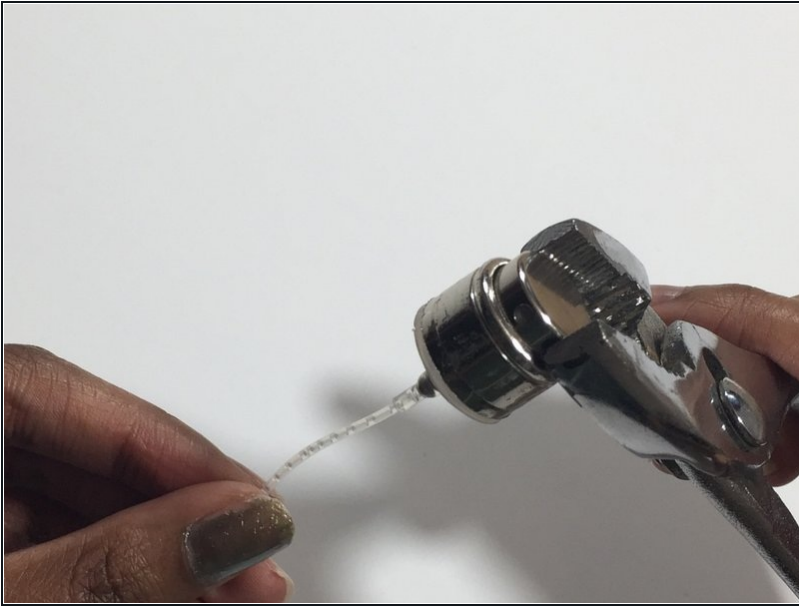
- Using your hands, insert the tube back into the opening.

Step 5



- Insert the sewing needle into the small opening to make sure that there is no clogging within the opening.

Step 6



- Using the pliers, gently twist the jammed nozzle in a clockwise motion until the pump pops up.

Step 7



- Using your hands, screw the nozzle back on to the bottle in a clockwise direction.

Step 8



- Test the newly unjammed nozzle to see if the product projects out effectively.

To reassemble the perfume bottle, follow these instructions in reverse order.