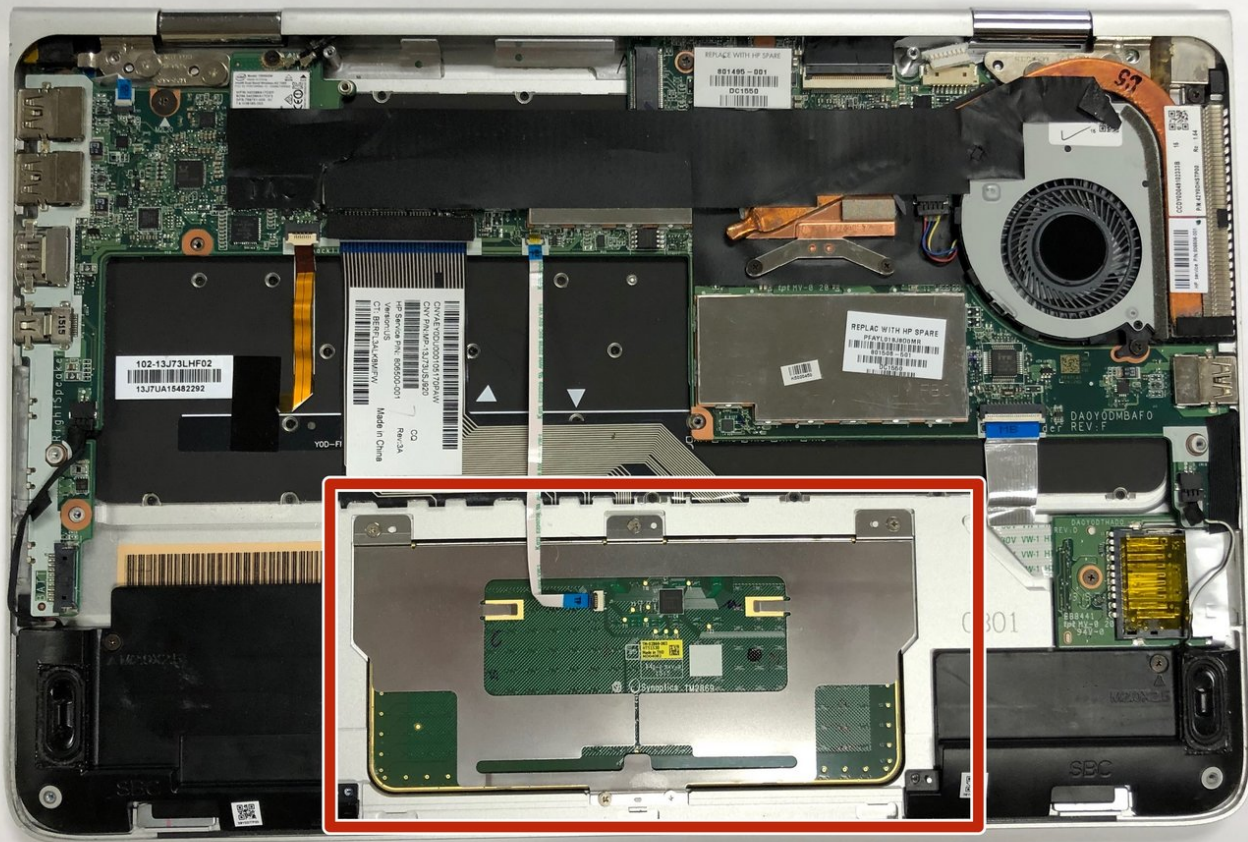




# HP Spectre 13-4002dx Touchpad Replacement

This guide will walk you through how to replace the touchpad for this HP laptop.

Written By: Cayce Stewart



---

## INTRODUCTION

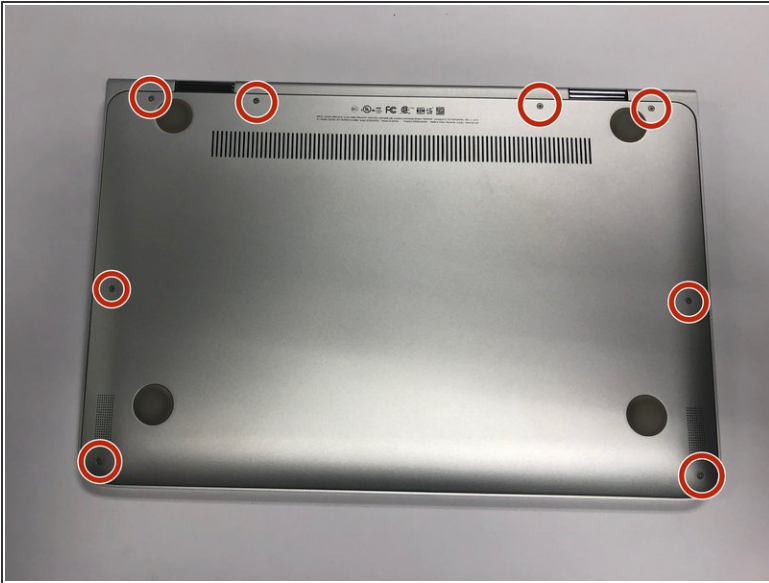
The touchpad is for navigating the cursor on your laptop's screen. The touchpad may need to be replaced if there is no response when you place your hand on it. The laptop needs to be turned off and disconnected from any power source during this procedure. Disconnecting the battery while the laptop is on may hurt you or damage your laptop.



### TOOLS:

- [T5 Torx Screwdriver](#) (1)
  - [Spudger](#) (1)
  - [Phillips #000 Screwdriver](#) (1)
  - [Tweezers](#) (1)
-

## Step 1 — Bottom Case



- Using the Torx T5 screwdriver, remove the eight 8 mm screws on the bottom case of the laptop.

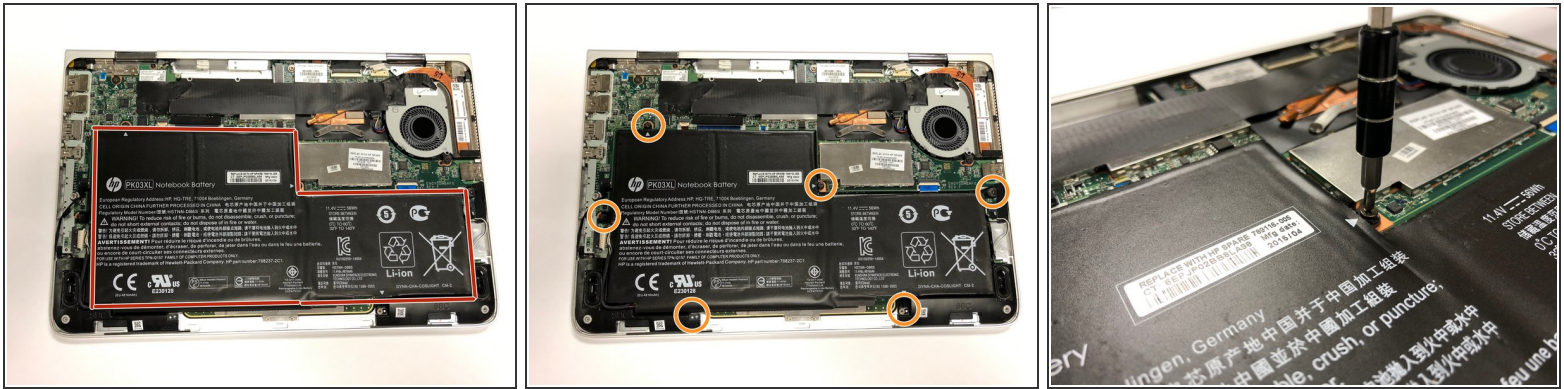
## Step 2



- Pry up one corner of the bottom case with a spudger.
- Work the spudger around the edges, making your way towards the bottom of the laptop.
- Remove the bottom case.

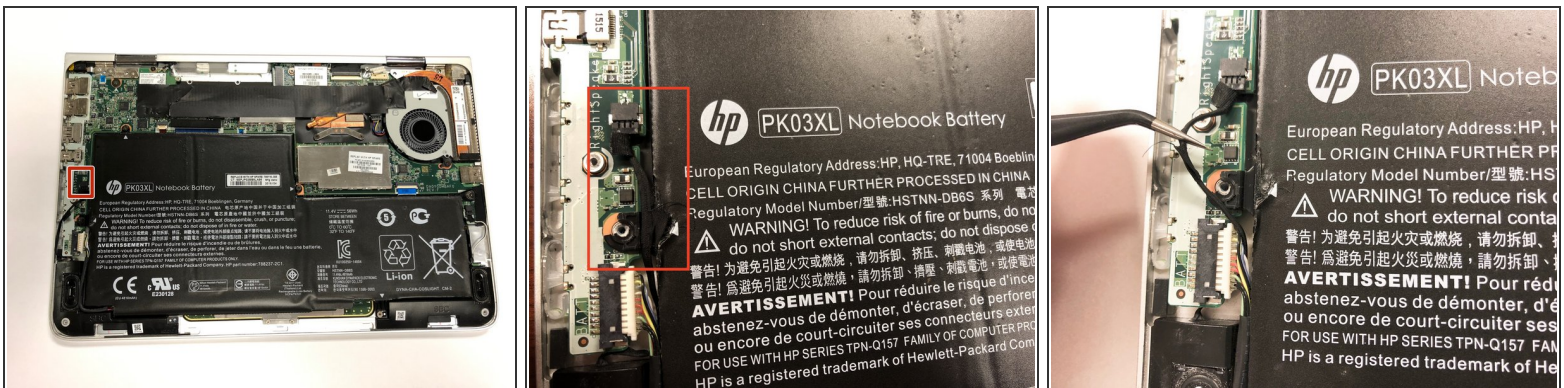


## Step 3 — Battery



- Orient the laptop the same way as the pictures. The battery is bordered in a red outline.
- Remove the six 4 mm screws using a Phillips #000 screwdriver.

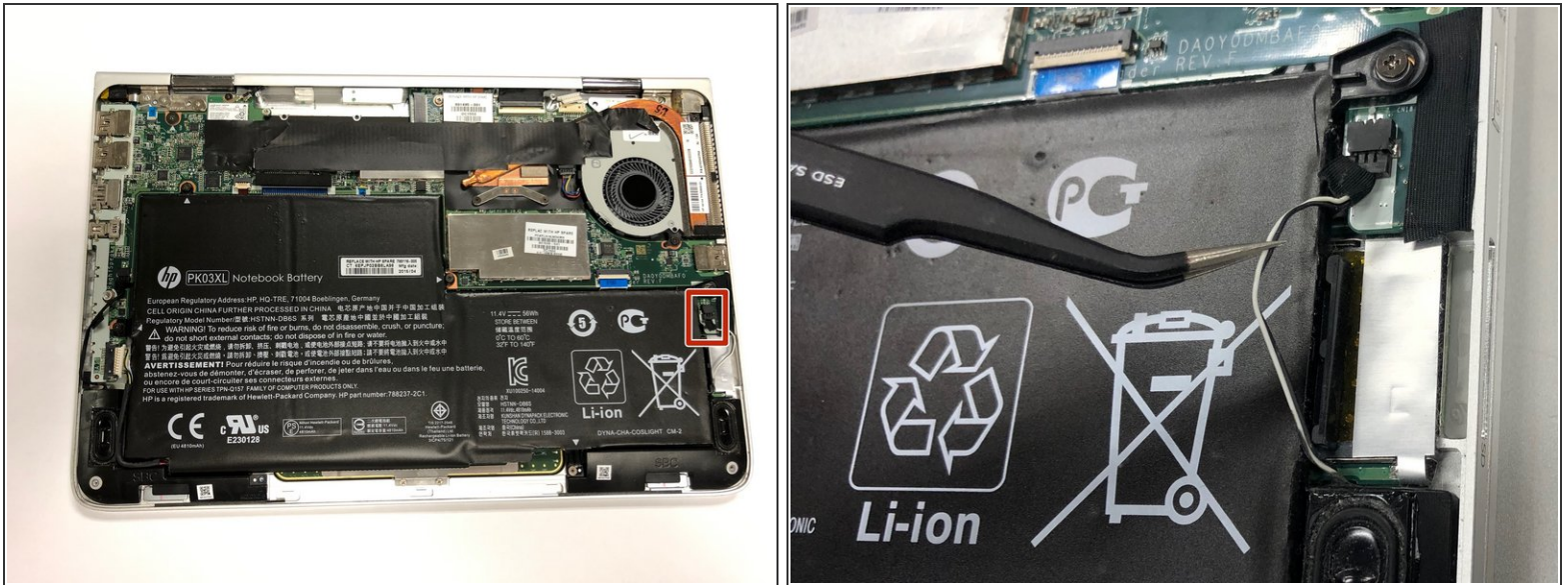
## Step 4



**⚠** Do not disconnect the cable connector shown in the red box.

- The speaker cable may be attached to the battery with black electrical tape. If so, remove the tape.
- Move the cable clear of the battery.

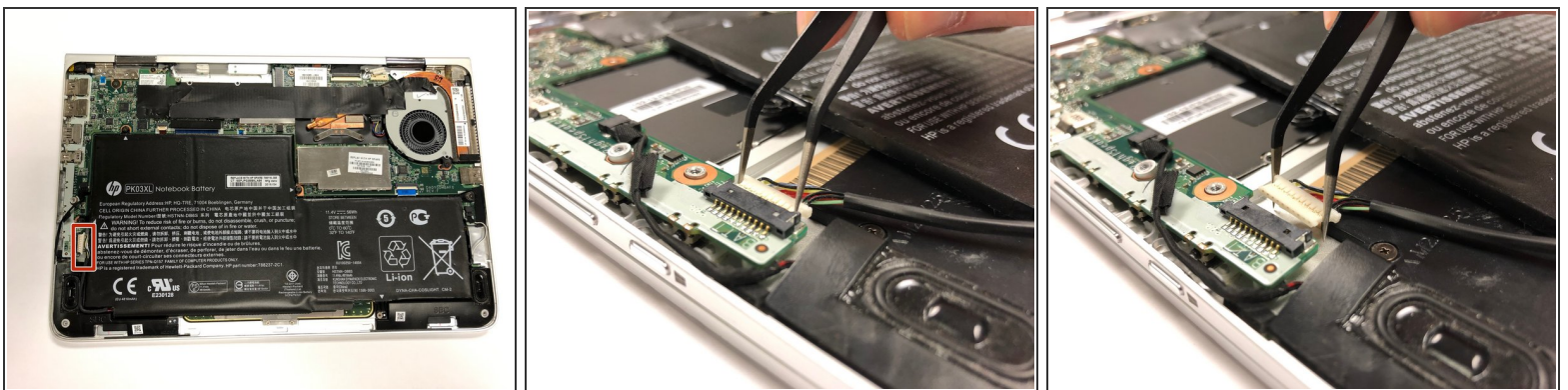
## Step 5



**⚠** Do not disconnect the cable connector located in the red box.

- Use tweezers to remove the speaker cable from the groove attached to the battery.
- Push the cable to the side so it does not get in the way of the battery removal.

## Step 6



- Disconnect the battery cable connector by sliding it out of the socket.
- ① Move the battery out of the way if you need more room to disconnect the power cable.

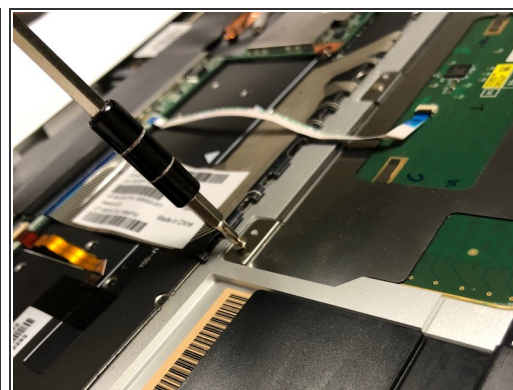
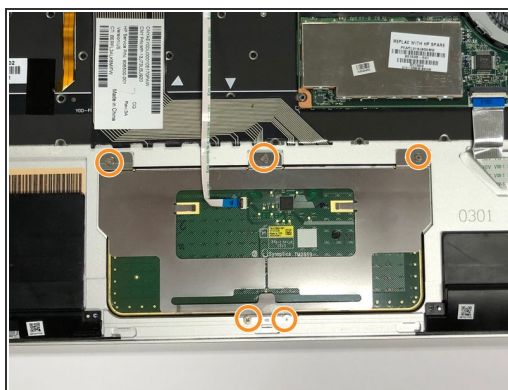
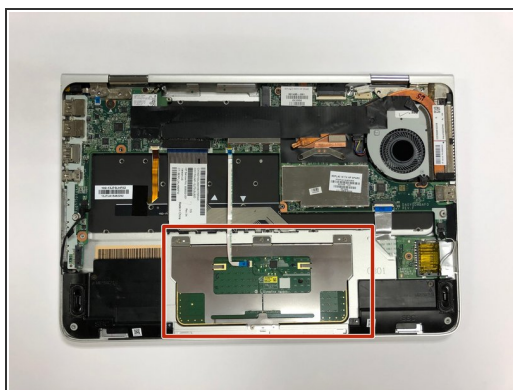


## Step 7



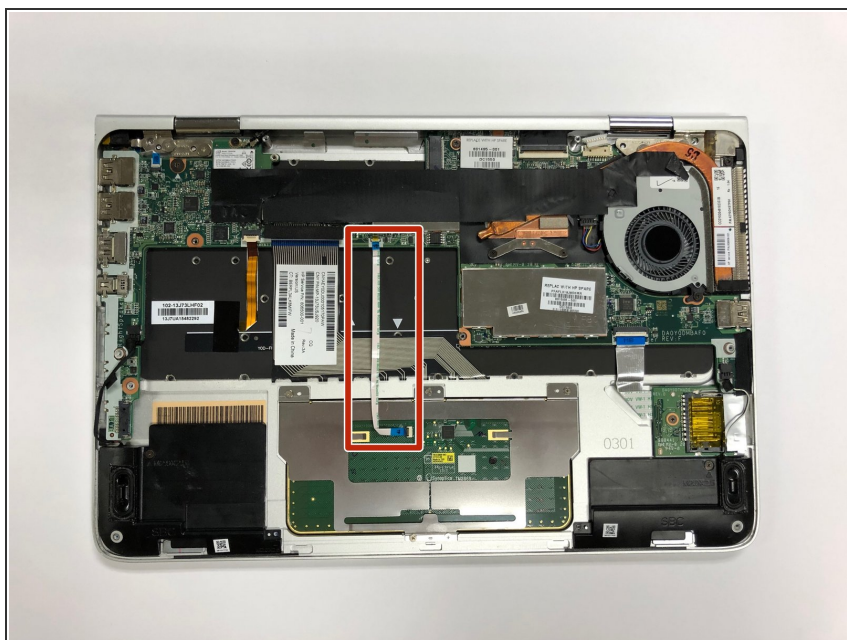
- Carefully remove the battery.

## Step 8 — Touchpad



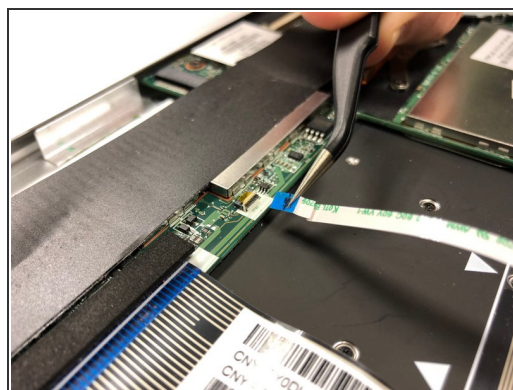
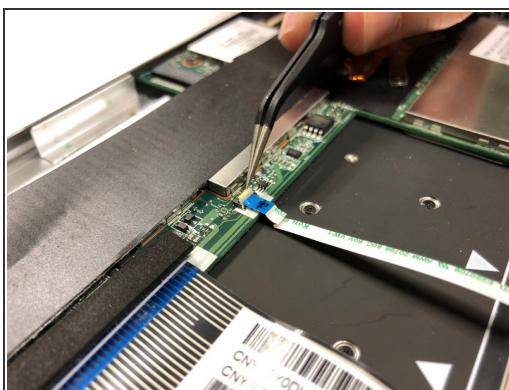
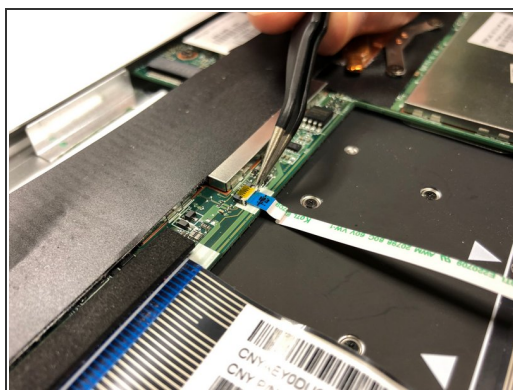
- The touchpad is boxed in red.
- Remove the five 20 mm Phillips #0 screws.

## Step 9



- Remove the connector outlined in red.

## Step 10



- To release the ribbon cable, flip up the white tab on the connector 90 degrees.
- Pull the ribbon cable out of the connector.

## Step 11



- Remove the touchpad.

To reassemble your device, follow these instructions in reverse order.