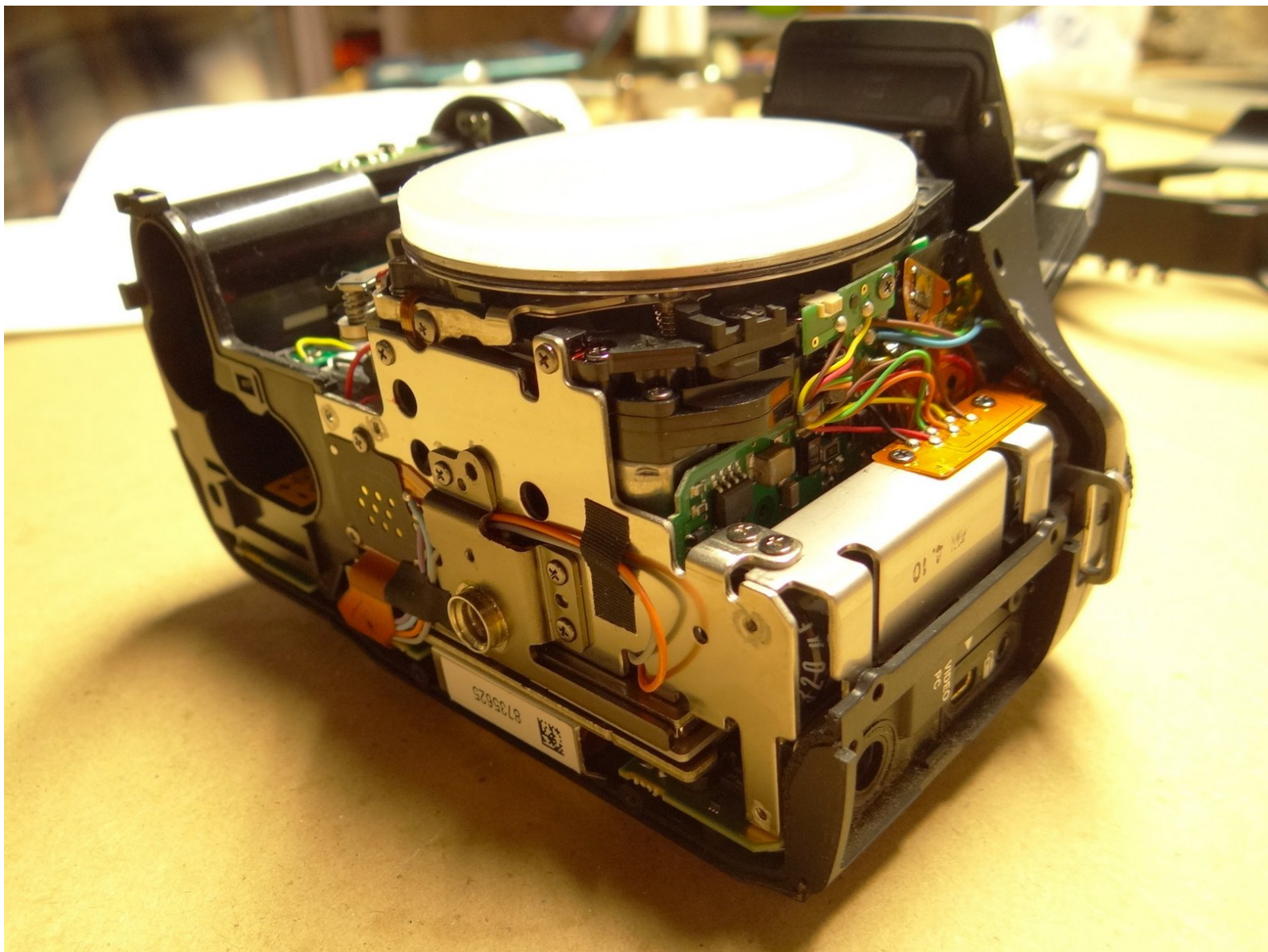




Disassembling Pentax K200D Front Cover

Remove the front cover to access the lens mount, manual and autofocus switch, lens release switch, timer light, and other components.

Written By: Rick Nelson



INTRODUCTION

Remove the front cover to access the lens mount, manual and autofocus switch, lens release switch, timer light, and other components.



TOOLS:

- [Phillips #00 Screwdriver](#) (1)
-

Step 1 — Preparation



- Retrieve your Pentax K200D, the lens mount cover, and required tools.
- Remove the lens, if you have one attached, and replace it with the lens mount cover to make handling and repair easier.

Step 2 — Flash



- With the camera turned on, press the pop-up flash button to release the flash.
- ⚠ Be sure to turn the camera back off before proceeding.
- Remove the two 4.3 mm Phillips screws securing the top edge of the front cover to the top cover.

Step 3 — Bottom cover



- Remove the seven 4.3 mm Phillips screws securing the bottom cover to the camera body
- Remove the two 2.5 mm Phillips screws also securing the bottom cover to the camera body
- ⓘ Open the battery door and carefully remove the bottom cover, as the battery door components become unsecured when the bottom cover is removed.

Step 4



- Remove the two 4.3 mm Phillips screws securing the right side of the front cover to the camera body.

To reassemble your device, follow these instructions in reverse order.