



HP Windows Mixed Reality Controllers TPC-Q044 Trigger Replacement

This guide goes over how to replace the trigger on the HP Windows Mixed Reality Controllers TPC-Q044.

Written By: Clement Cheung



INTRODUCTION

This guide goes over how to replace the controller's trigger button.

If your TPC-Q044 trigger button starts failing when using your controller, you may want to think about replacing the component. The failure may be a result of a loose spring or a broken latch. The replacement of the circuit board is not too complex. You will need the indicated screwdrivers and a spudger to complete this task. There are no warnings or potential hazards when replacing the pad.



TOOLS:

- [Spudger](#) (1)
 - [Phillips #00 Screwdriver](#) (1)
-

Step 1 — Batteries



- Slide the rear compartment cover in the direction of the arrow.
- ☞ If replacing batteries, ensure the (+) and (-) on the battery match the (+) and (-) labeled in the battery compartment.

Step 2 — Shell



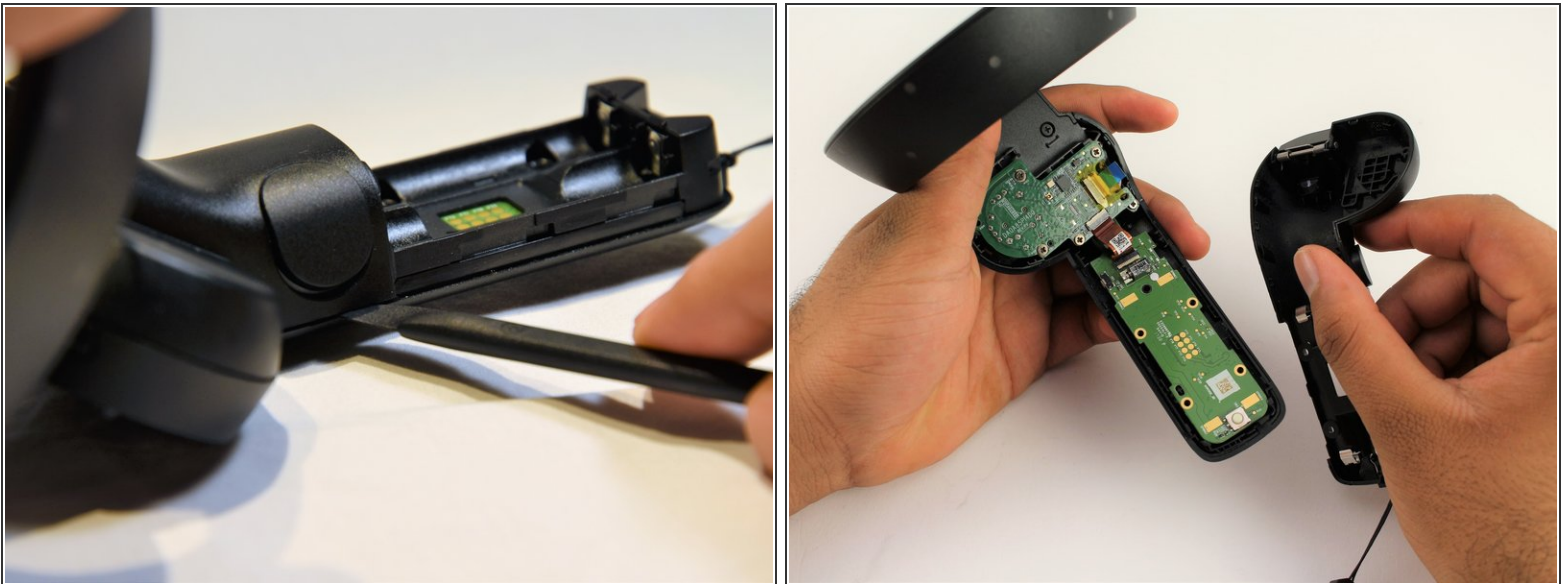
- Remove the four 4mm screws using a Phillips #00 screwdriver.

Step 3



- Grip the main body and pull the joystick outwards until the entire front panel pops off.
- Remove the 6mm screw in the corner of the joystick well using a Phillips #00 screwdriver.

Step 4



- Use a spudger to pry apart the two halves of the assembly.
- Work slowly, prying a small section at a time until the halves are completely separated.

Step 5 — Trigger



- Grasp the trigger with one hand while pushing against the outer wall of the shell.
 - Apply pressure, pulling the wall away from the trigger.
 - Remove the trigger starting from the freed edge.
- ☒ The spring-rod assembly can easily come apart. Inserting the large end first during reassembly may make the process easier.

To reassemble your device, follow these instructions in reverse order.