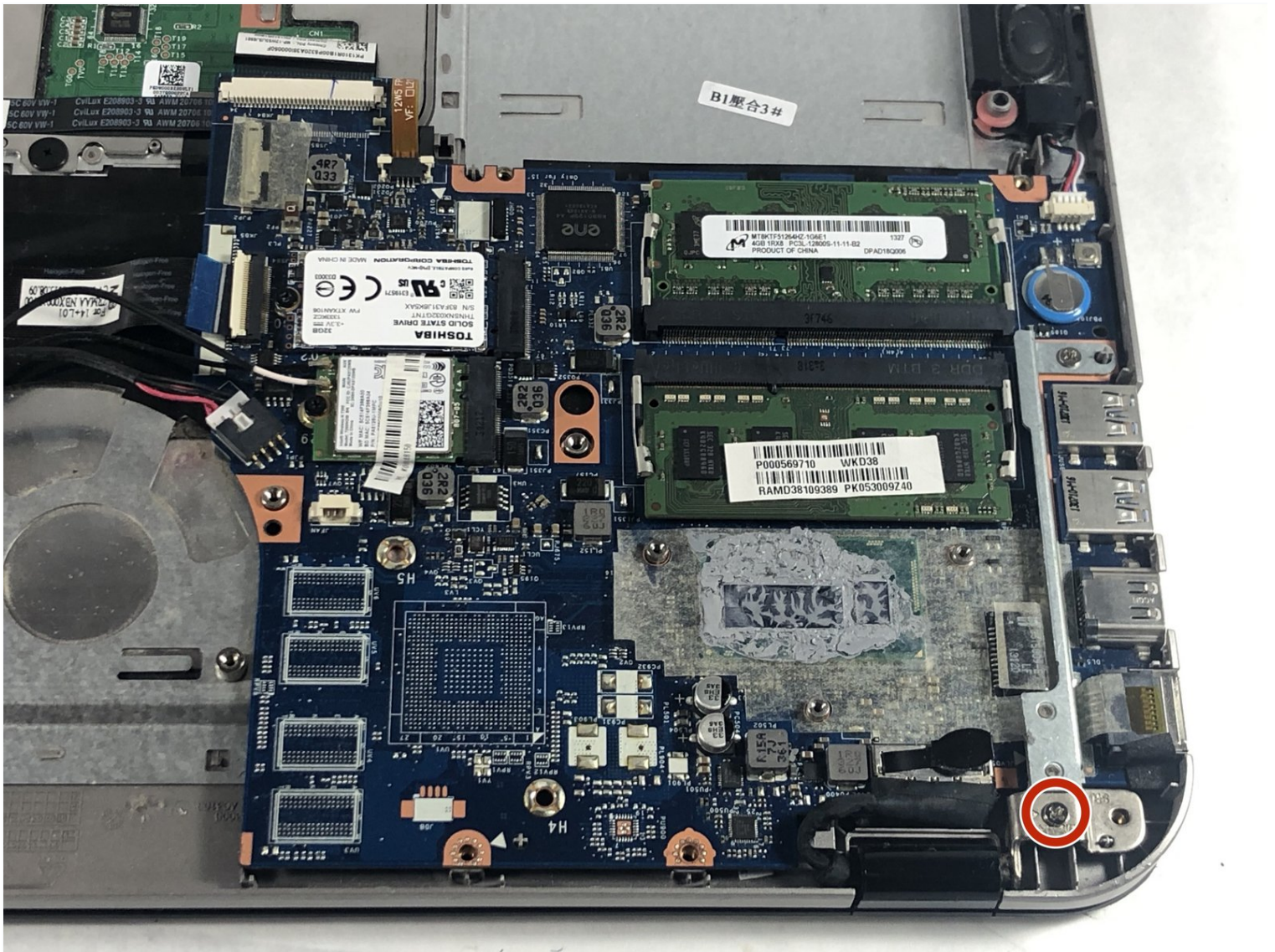


Toshiba Satellite E45T-A4300 Motherboard Replacement

The motherboard is the base for all of the...

Written By: James Nguyen



INTRODUCTION

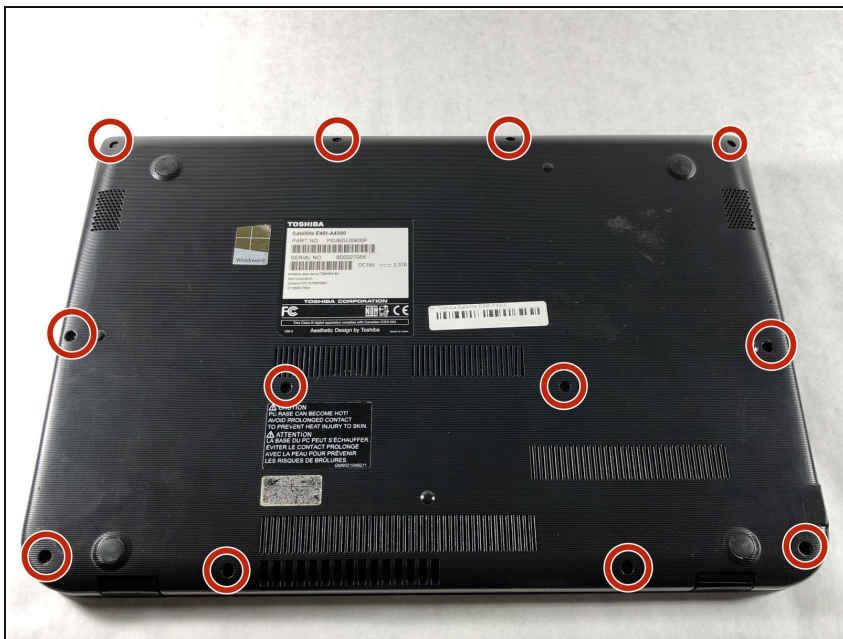
The motherboard is the base for all of the parts of the laptop to communicate with each other. When the motherboard is damaged such that certain functions of the laptop won't work, then a replacement for the motherboard may be necessary.

TOOLS:

Phillips #1 Screwdriver (1)

Spudger (1)

Step 1 — Back Panel



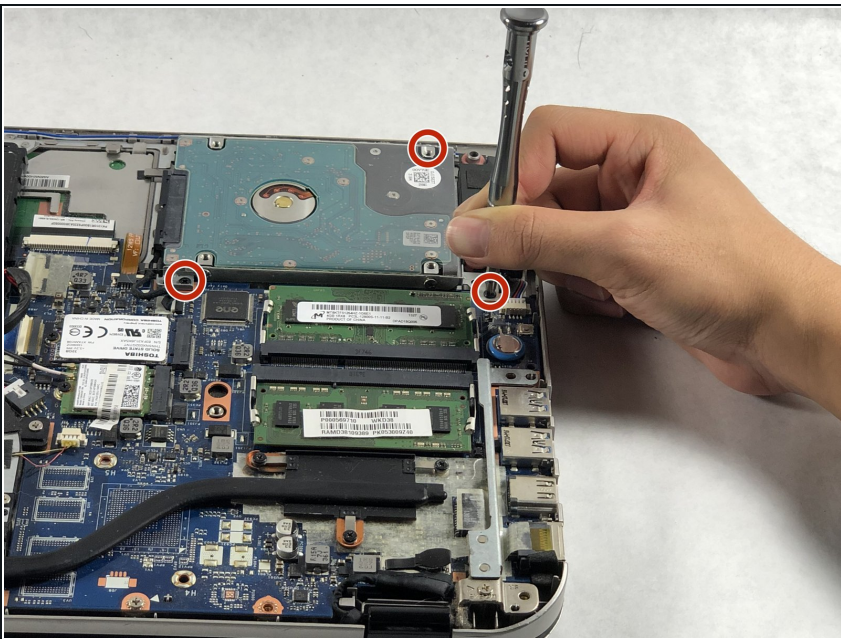
- Remove the twelve 5 mm Phillips #1 screws from the back panel.

Step 2



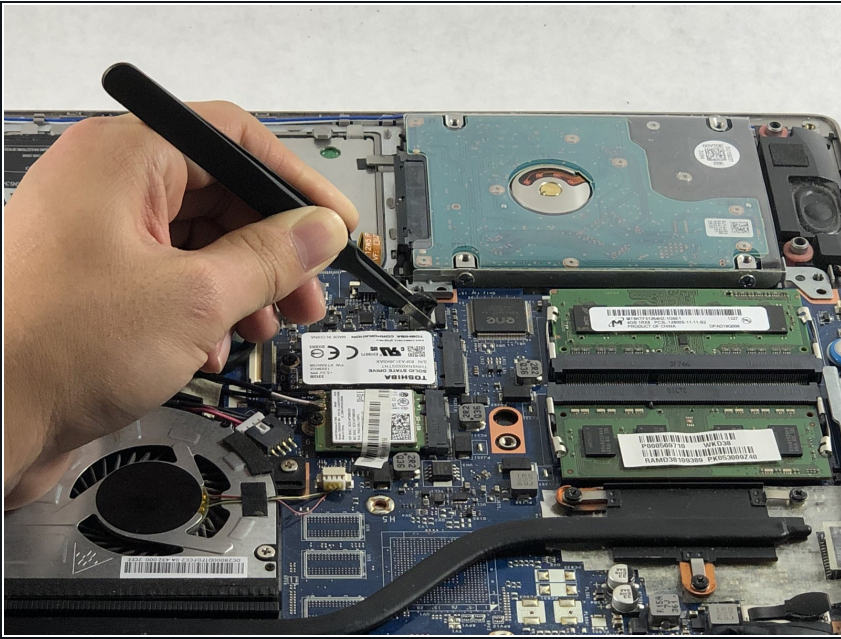
- Pry the back panel open with the plastic spudger or fingernails.
- ⓘ Pry it gently so that the back panel does not crack.

Step 3 — Hard Drive



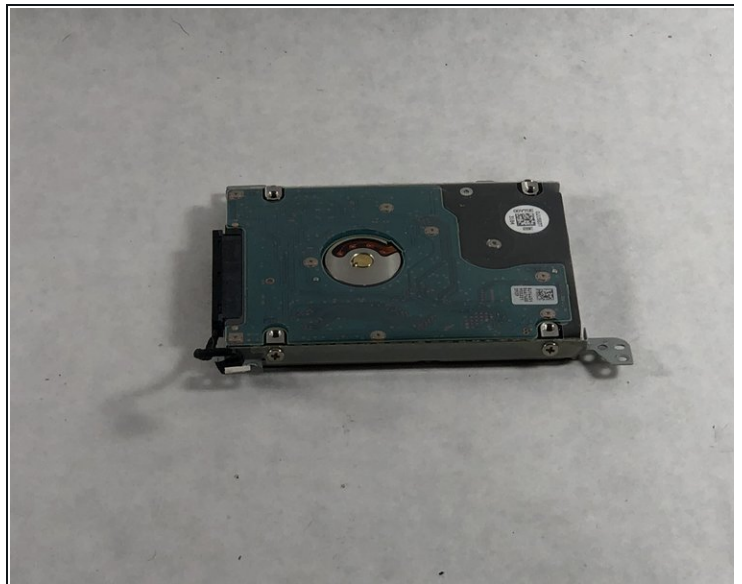
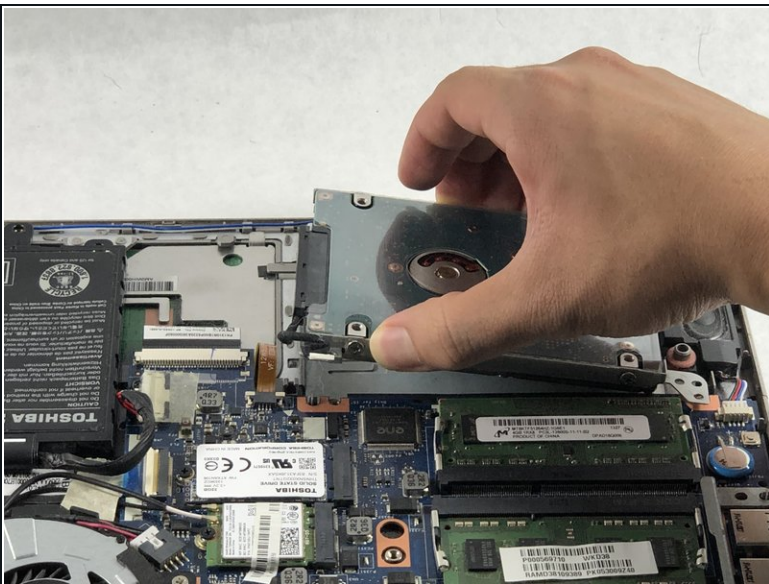
- Remove the three 7mm black screws using the Phillips #1 screwdriver.

Step 4



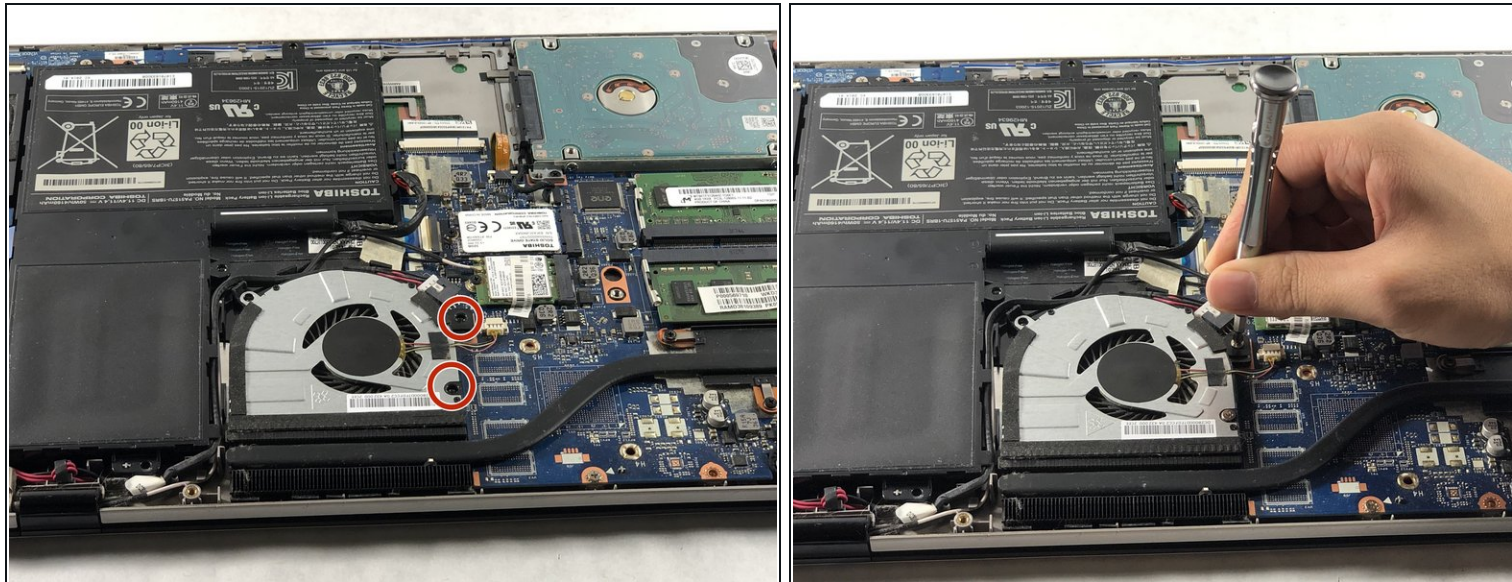
- Remove the hard drive's connection port with grooved tweezers.

Step 5



- Pull the hard drive out of the hook and remove it from the device.

Step 6 — Fan



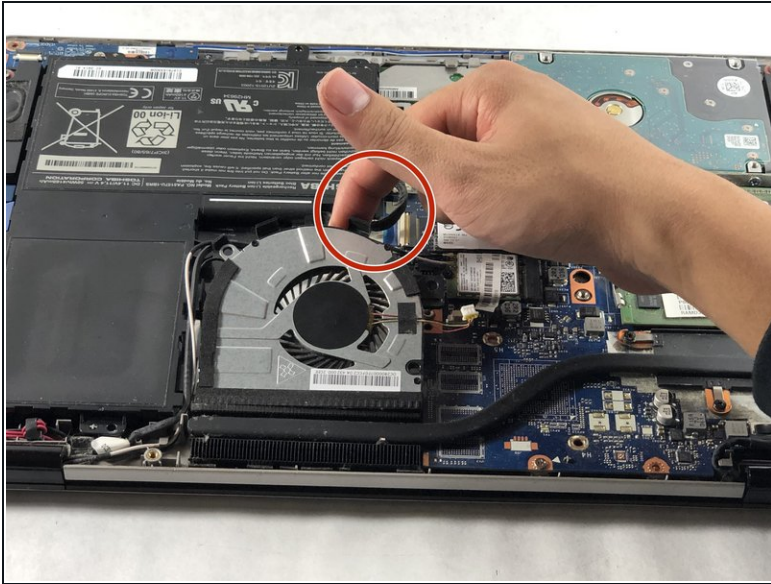
- Remove the two 5 mm screws using a Phillips #1 screwdriver.

Step 7



- Gently disconnect the fan cable from the device.

Step 8



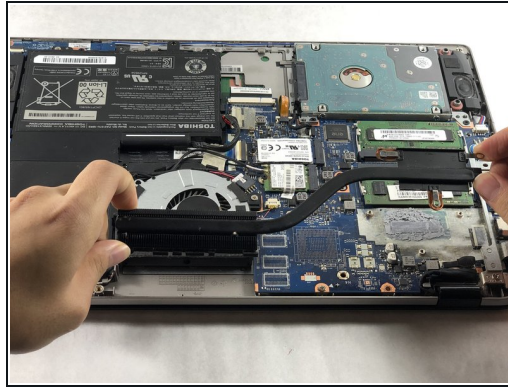
- Move the wires away from the fan's hook.
- Remove the fan from the device.

Step 9 — Heat Sink



- Remove the three 5 mm screws using a Phillips #1 screwdriver.

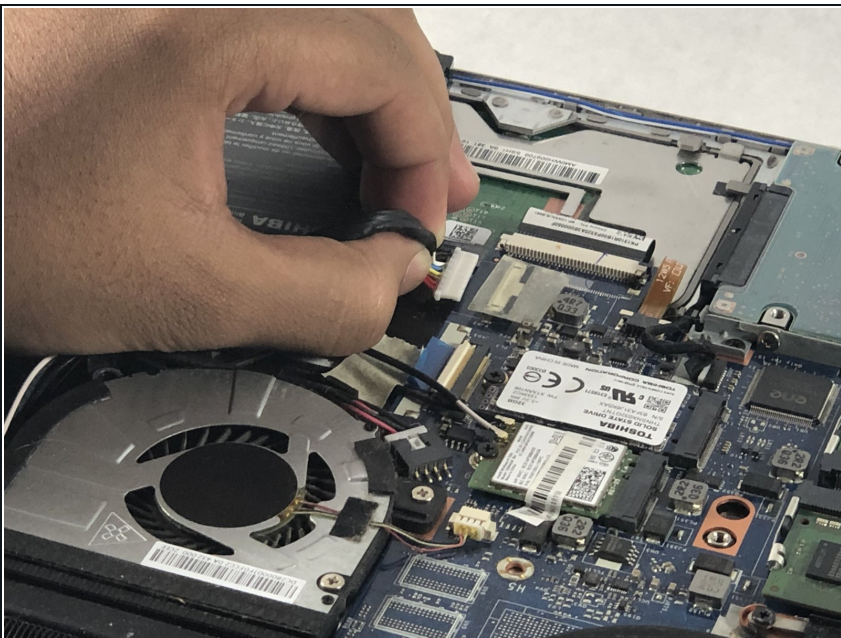
Step 10



- Pry the heat sink away from the laptop with two hands at both ends and remove it from the device.

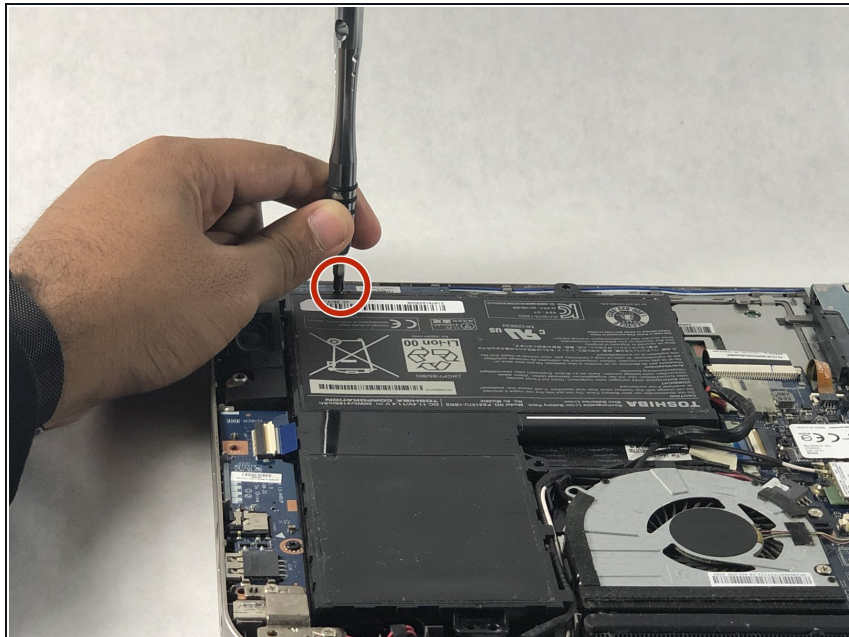
⚠ The heat sink is glued to a gray paste called thermal paste. Do not touch the paste.

Step 11 — Battery



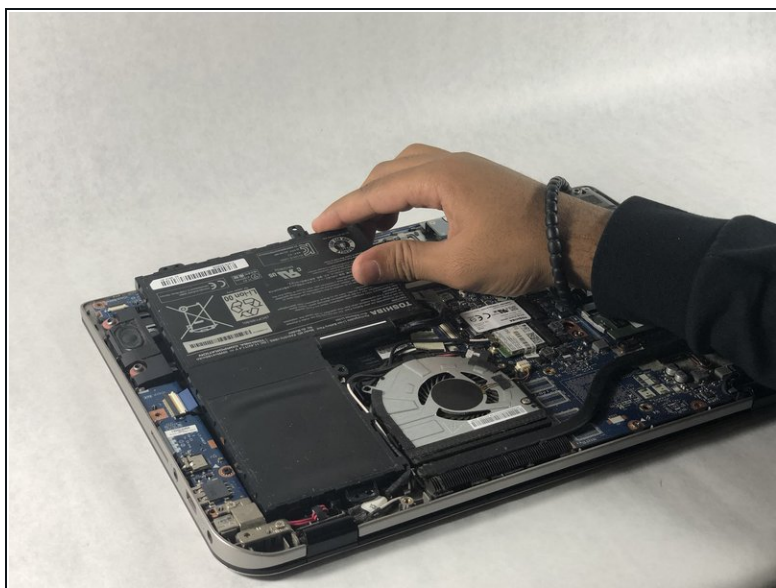
- Disconnect the battery connector from the motherboard.

Step 12



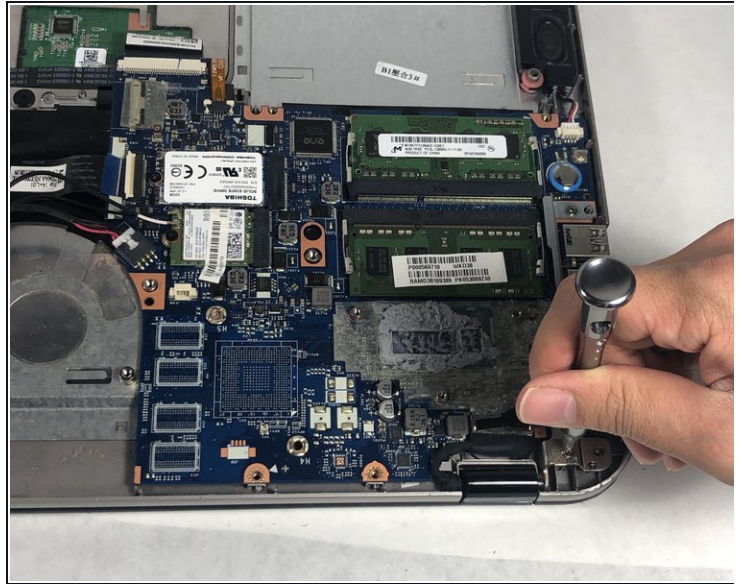
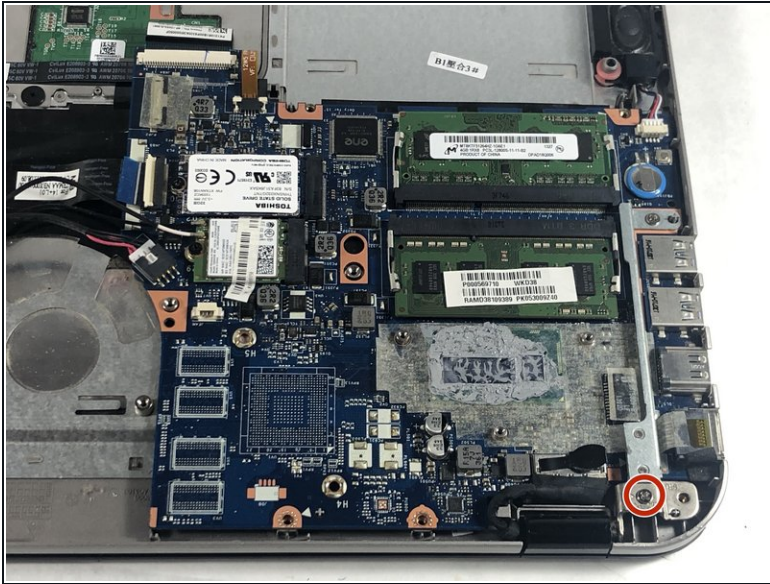
- Remove the single screw Phillips #1 screw near the battery.

Step 13



- Remove the battery from the laptop.

Step 14 — Motherboard



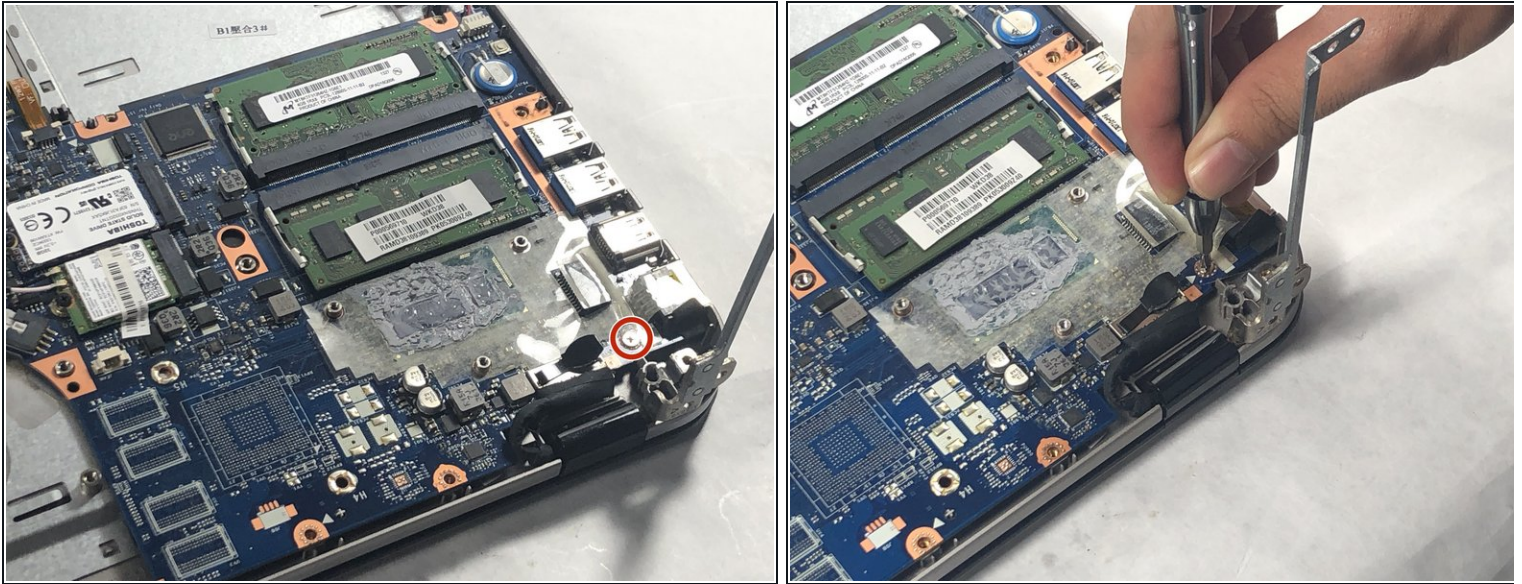
- Remove the single 7 mm silver screw using a Phillips #1 screwdriver.

Step 15



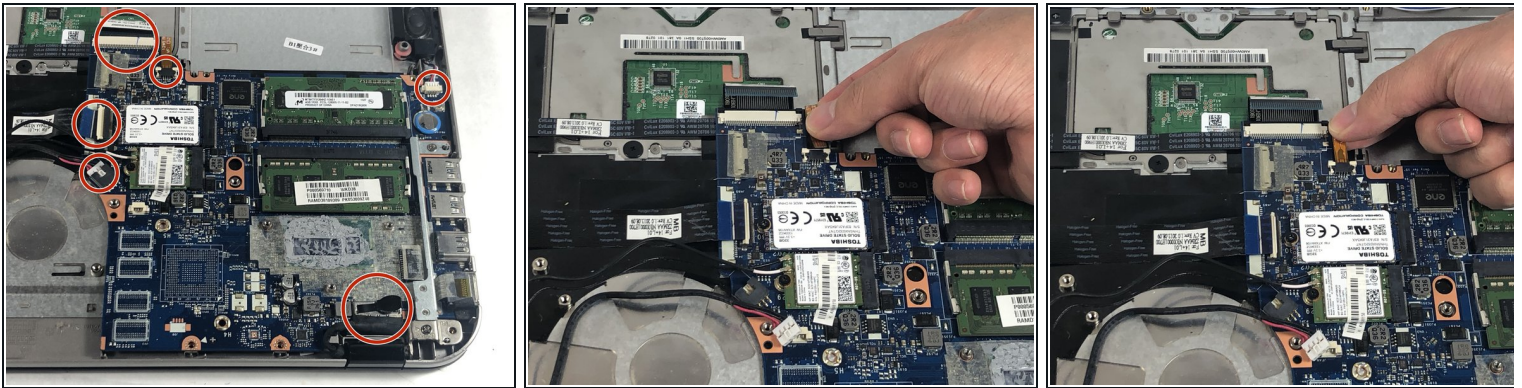
- Pull metal stick holder until it is upright.

Step 16



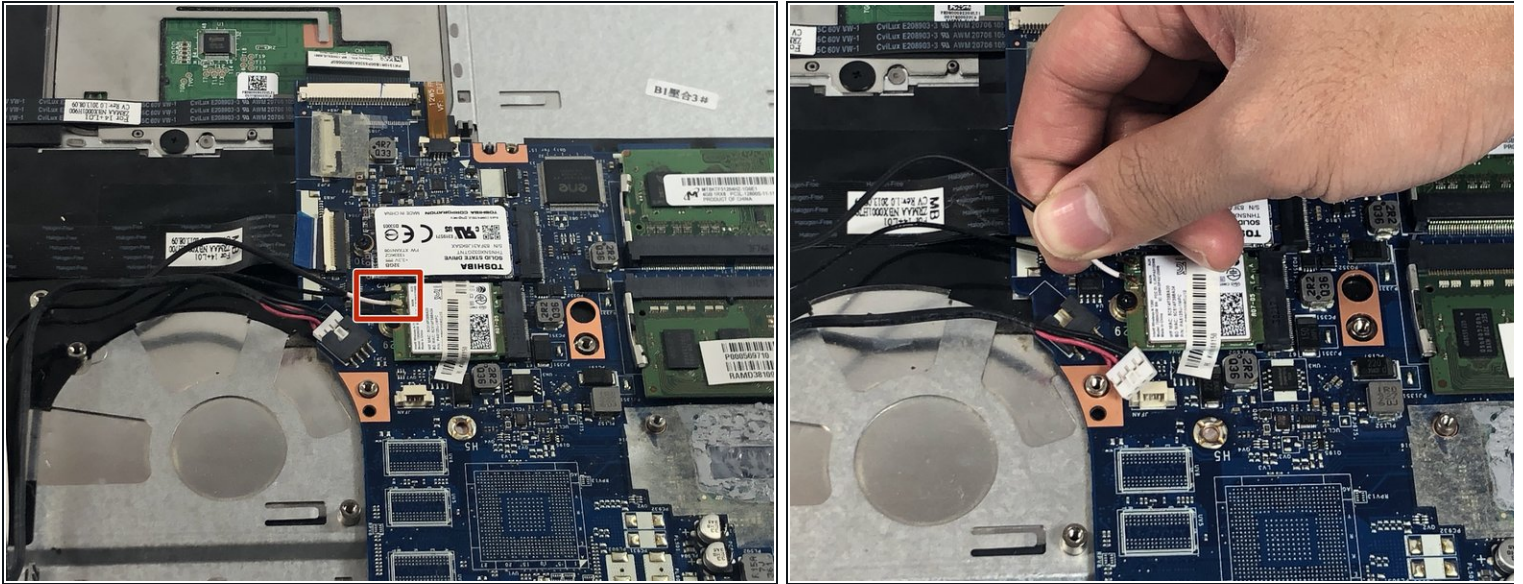
- Remove the 7 mm silver screw under the metal bar using the Phillips #1 screwdriver.

Step 17



- Disconnect the six connectors from the device.
- ❗ For the monitor port, pull it from the black tab.
- ❗ For the connection port with the blue strip, lift the white placeholder before pulling the blue strip out of the connection port.

Step 18



- Pull out 2 plugs out from the wireless network card.

Step 19



- Remove the motherboard from the device.

To reassemble your device, follow these instructions in reverse order.