



# Toshiba Satellite E45T-A4300 SSD Replacement Guide

Use this guide to replace the SSD in your Toshiba Satellite E45t-A4300.

Written By: James Nguyen



---

## INTRODUCTION

The solid state drive, or SSD in short, has the same functionality of the hard drive in storing data, but without a magnet. If the SSD is damaged from long time use or being given the wrong data, then a replacement for the SSD may be necessary.



### TOOLS:

- [Phillips #1 Screwdriver](#) (1)
  - [Spudger](#) (1)
-

## Step 1 — Back Panel



- Remove the twelve 5 mm Phillips #1 screws from the back panel.

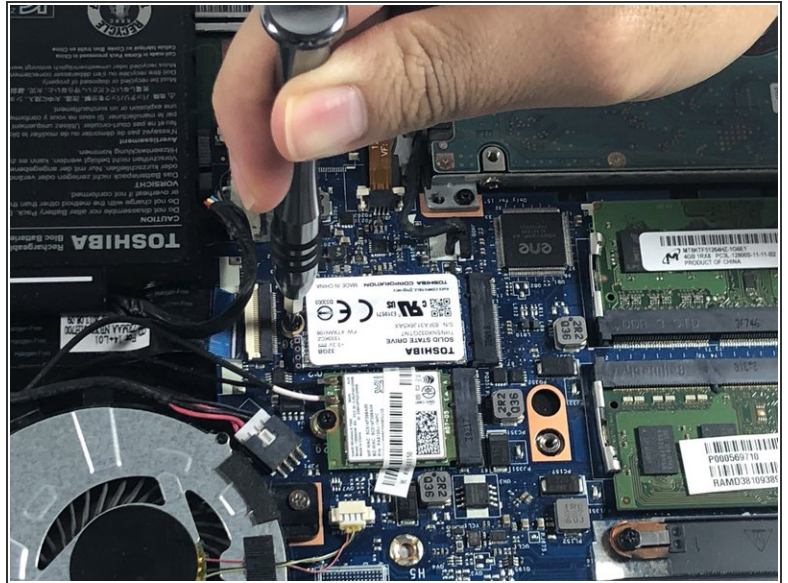
## Step 2



- Pry the back panel open with the plastic spudger or fingernails.
  - ⓘ Pry it gently so that the back panel does not crack.

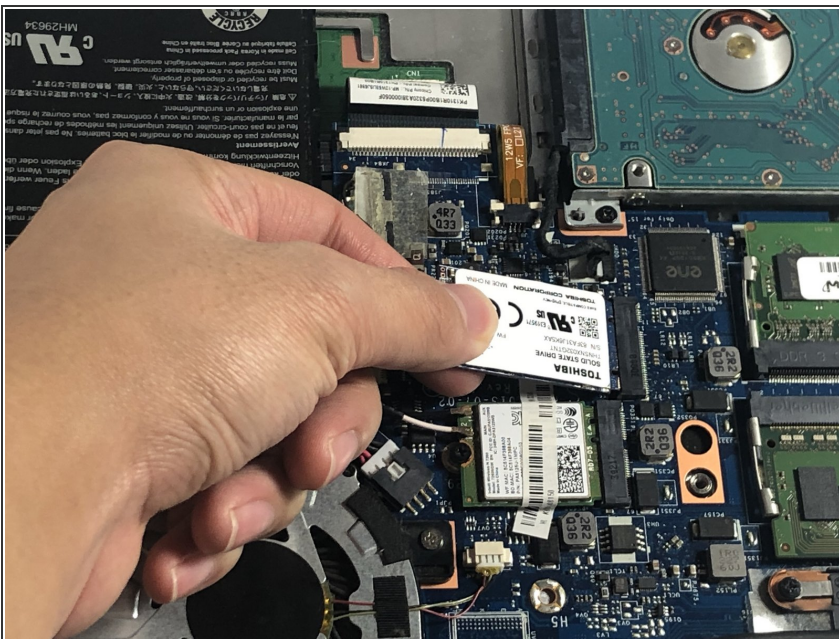


## Step 3 — SSD



- Remove the single 3 mm black screw using a Phillips #1 screwdriver.

## Step 4



- Pull the SSD away from the motherboard.

To reassemble your device, follow these instructions in reverse order.