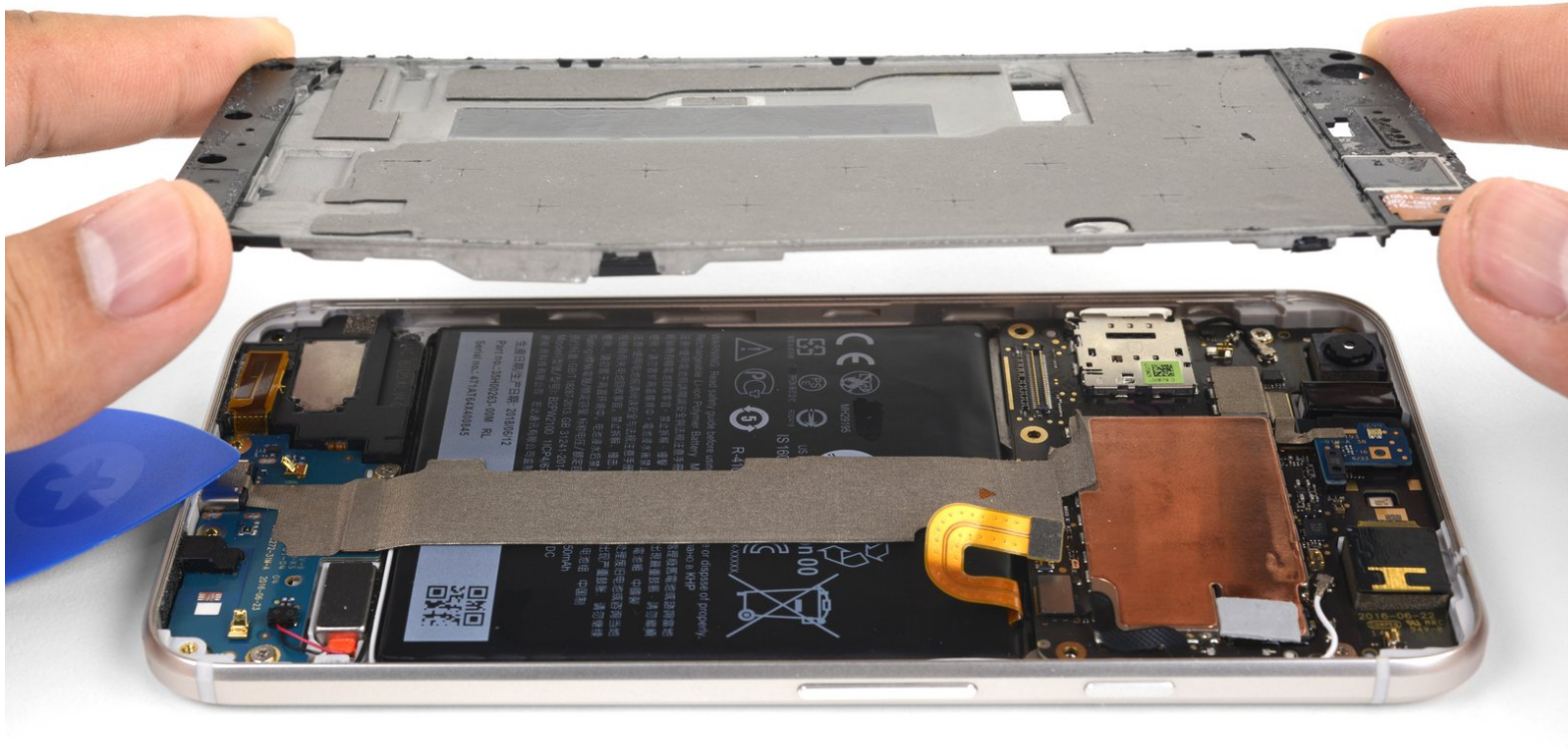




# Google Pixel XL Opening Procedure

Prereq only! Opening procedure for the Google Pixel XL. Removes midframe.

Written By: Arthur Shi



## INTRODUCTION

Prereq only! Opening procedure for the Google Pixel XL. Removes midframe.

**The Pixel XL's unreinforced display panel is fragile** and is attached to the frame with strong adhesive, making repairs difficult. There is a considerable chance of breaking the display, especially if it already has micro-fractures. Be sure to apply plenty of heat and be extremely careful during the prying stage.



### TOOLS:

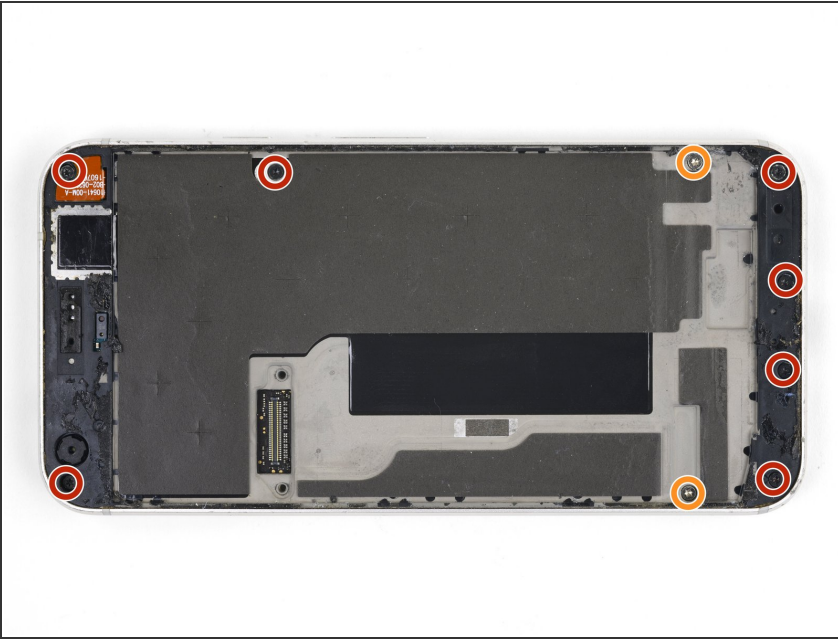
- [iOpener](#) (1)
- [iFixit Opening Picks set of 6](#) (1)
- [T5 Torx Screwdriver](#) (1)



### PARTS:

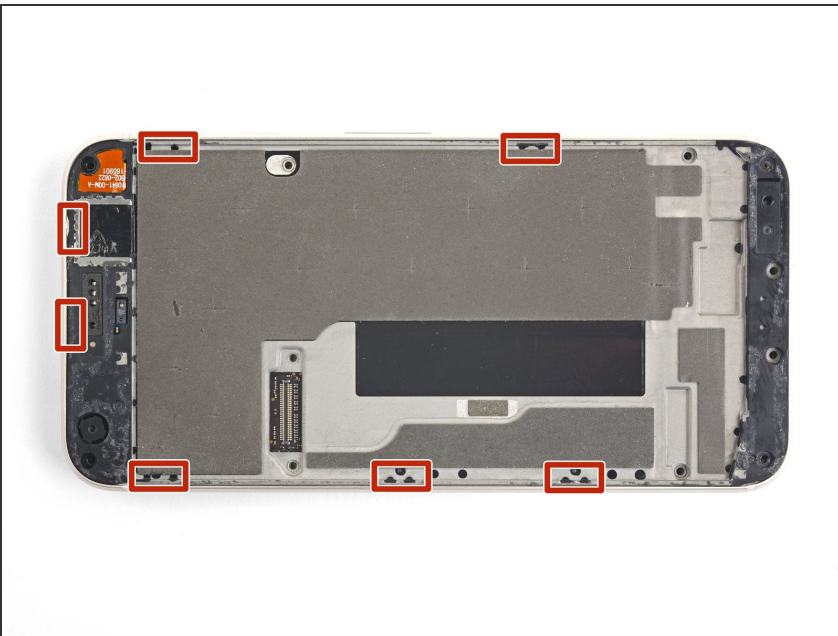
- [Google Pixel XL Display Adhesive](#) (1)

## Step 1 — Google Pixel XL Opening Procedure



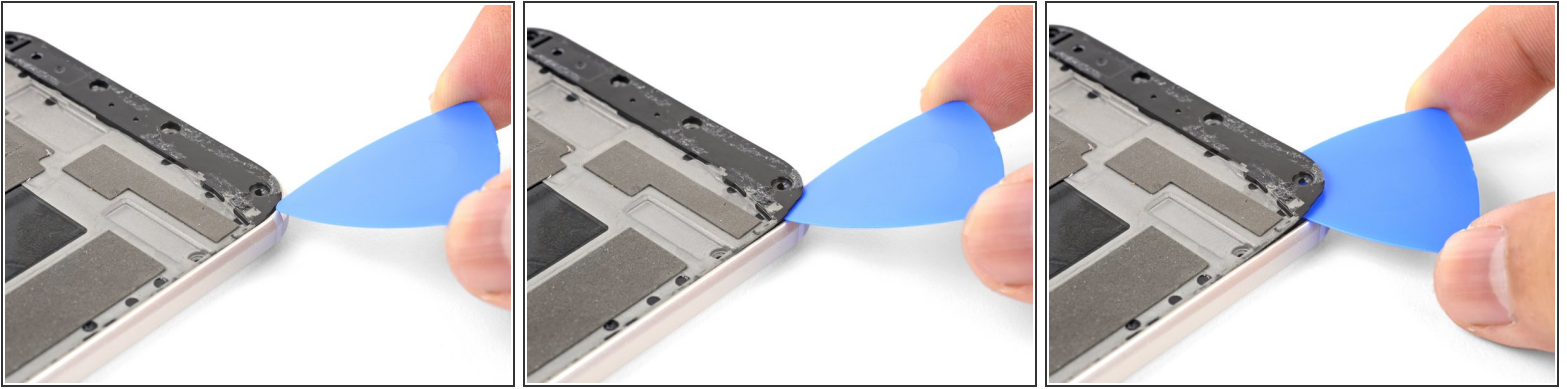
- Remove the following screws that secure the midframe to the back:
  - Seven black 4 mm T5 screws
  - Two silver 3 mm T5 screws

## Step 2



- The midframe is held tightly in place by plastic clips which push into the edge of the back case.

### Step 3



- Find the small notch in the bottom left corner of the frame and insert an opening pick.
- Slide the opening pick along the bottom edge of the phone towards the bottom right corner and leave it there.

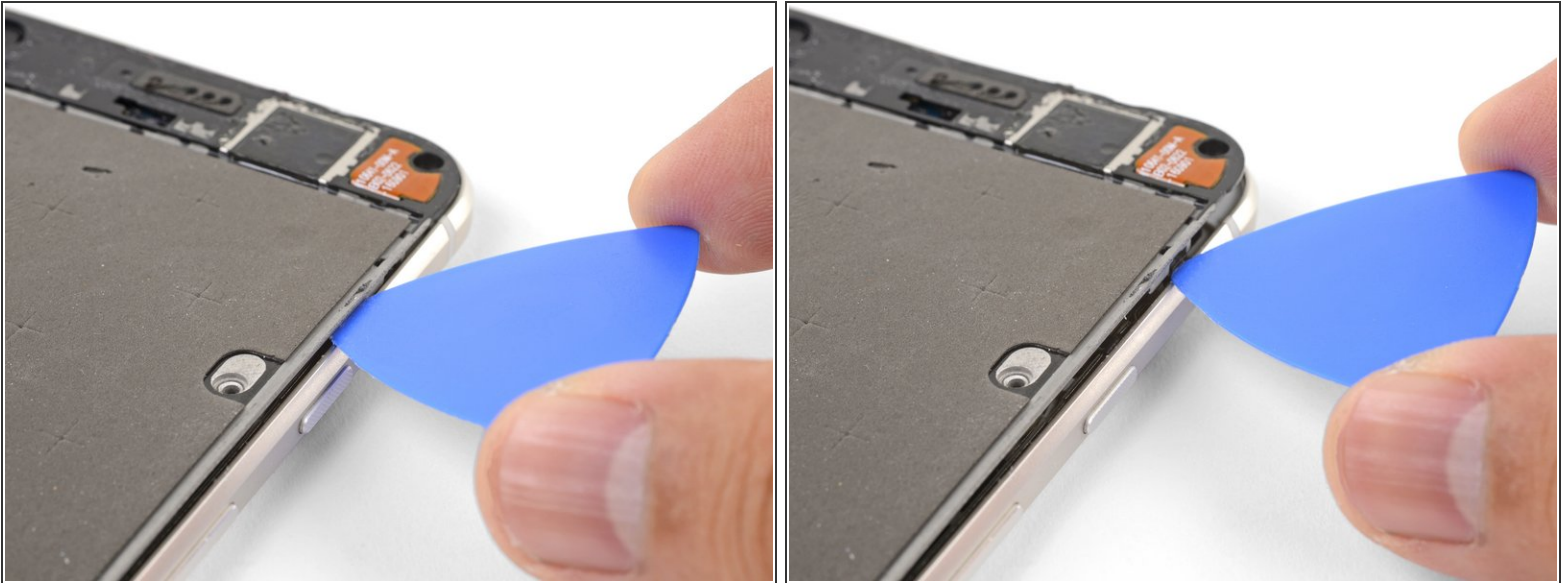
### Step 4



- Insert a separate opening pick into the right edge of the phone, near the bottom.
- Slowly push the pick upwards along the seam until the first clip pops free.
  - ⓘ Due to the tight tolerances, this may be difficult, requiring a substantial amount of force. If you are having trouble, try [inserting and sliding a playing card](#).
- Once you've released the clip, leave the opening pick in place to prevent the midframe from resealing.

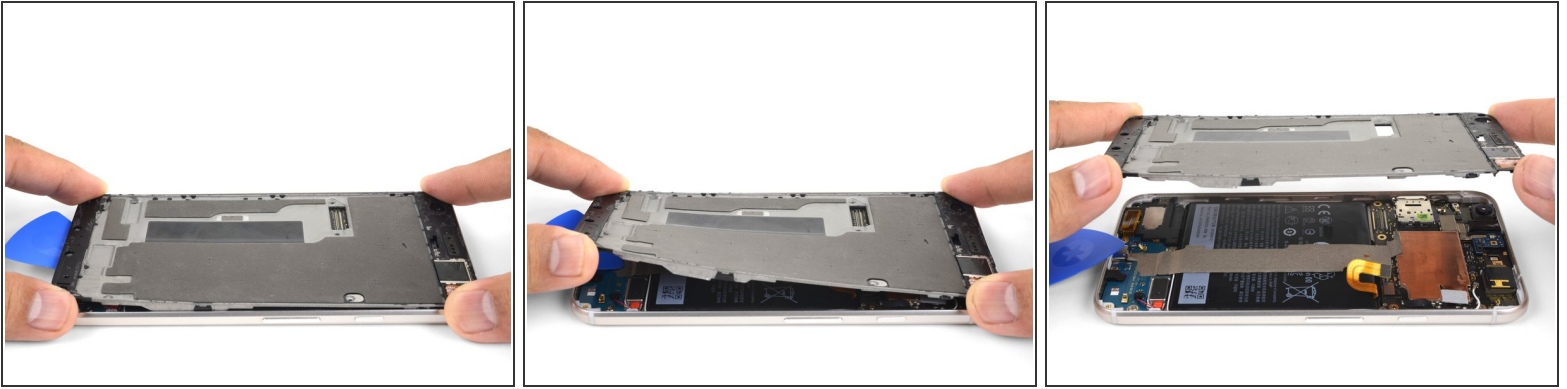


## Step 5



- Insert an opening pick into the right edge of the phone and slide it upwards towards the top right clip.
  - ① You do not need to insert the pick more than 2 mm into the edge. If you insert the pick all the way in, you may risk damaging flex cables.
- Slowly slide the pick past the clip to disengage it from the frame.
  - ① At this point, the right edge of the midframe should be free from the case. If it isn't, slide an opening clip up and down along the right edge.

## Step 6



- Grasp the right edge of the midframe by the corners and slowly hinge the edge up.
  - When the left edge feels loose, stop hinging and lift the midframe upwards.
  - Remove the midframe.
- ☒ To reinstall the midframe, align it to the case, then [squeeze around the perimeter](#) until all the clips snap back into position. When properly done, the midframe should lie flat.

To reassemble your device, follow these instructions in reverse order.