



T-Mobile SDA (HTC Tornado) SIM Card Replacement

This guide will demonstrate how to install or replace a SIM card.

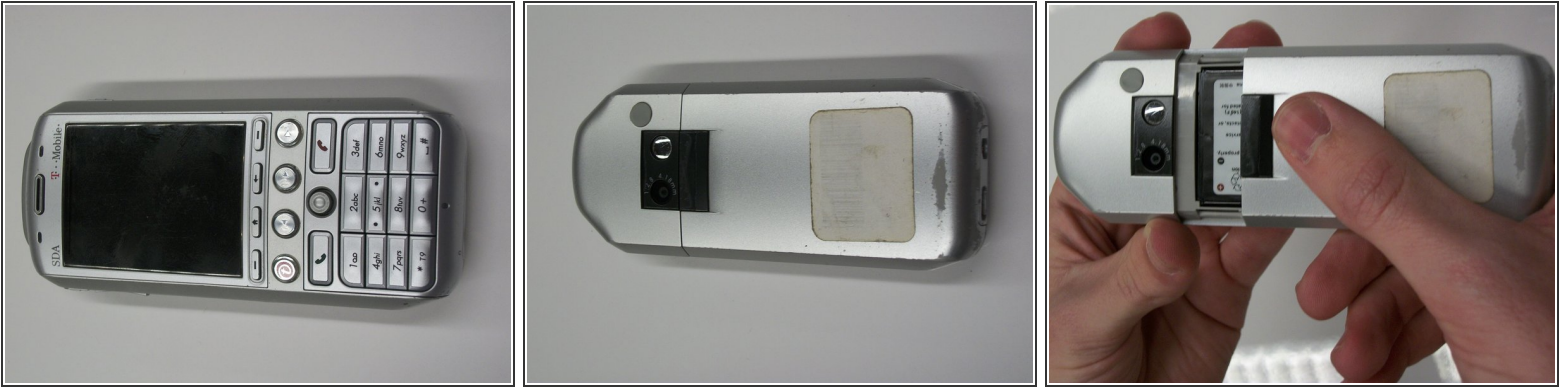
Written By: Kaitlyn Patterson



INTRODUCTION

This guide is useful if the SIM card of the phone needs to be replaced or removed.

Step 1 — Battery



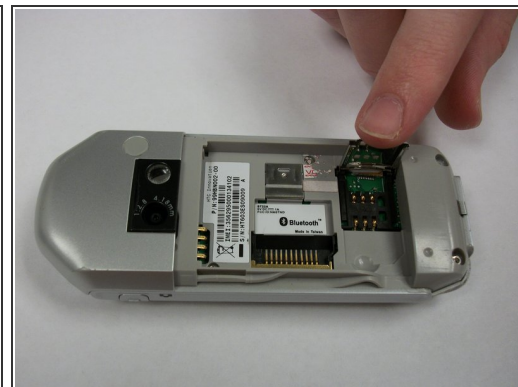
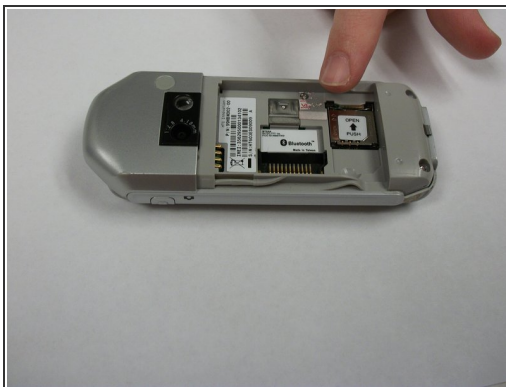
- To remove the battery cover, first turn the phone so that the keypad is face down.
- While holding the phone with one hand, place the thumb of the other hand at the top of the battery cover.
- Slide the battery cover toward the bottom of the phone to remove.

Step 2



- To remove the battery, first grab it using a finger on either side.
- Pull the battery upward, while securing the phone with your other hand.
- Gently remove the battery and place it to the side of the phone.

Step 3 — SIM Card



- Open the SIM card door, located on the lower right part of the phone.
- Insert the SIM card into the door with the gold plating facing downward.
- Close the SIM card door by lightly pushing downward.

To reassemble your device, follow these instructions in reverse order.