

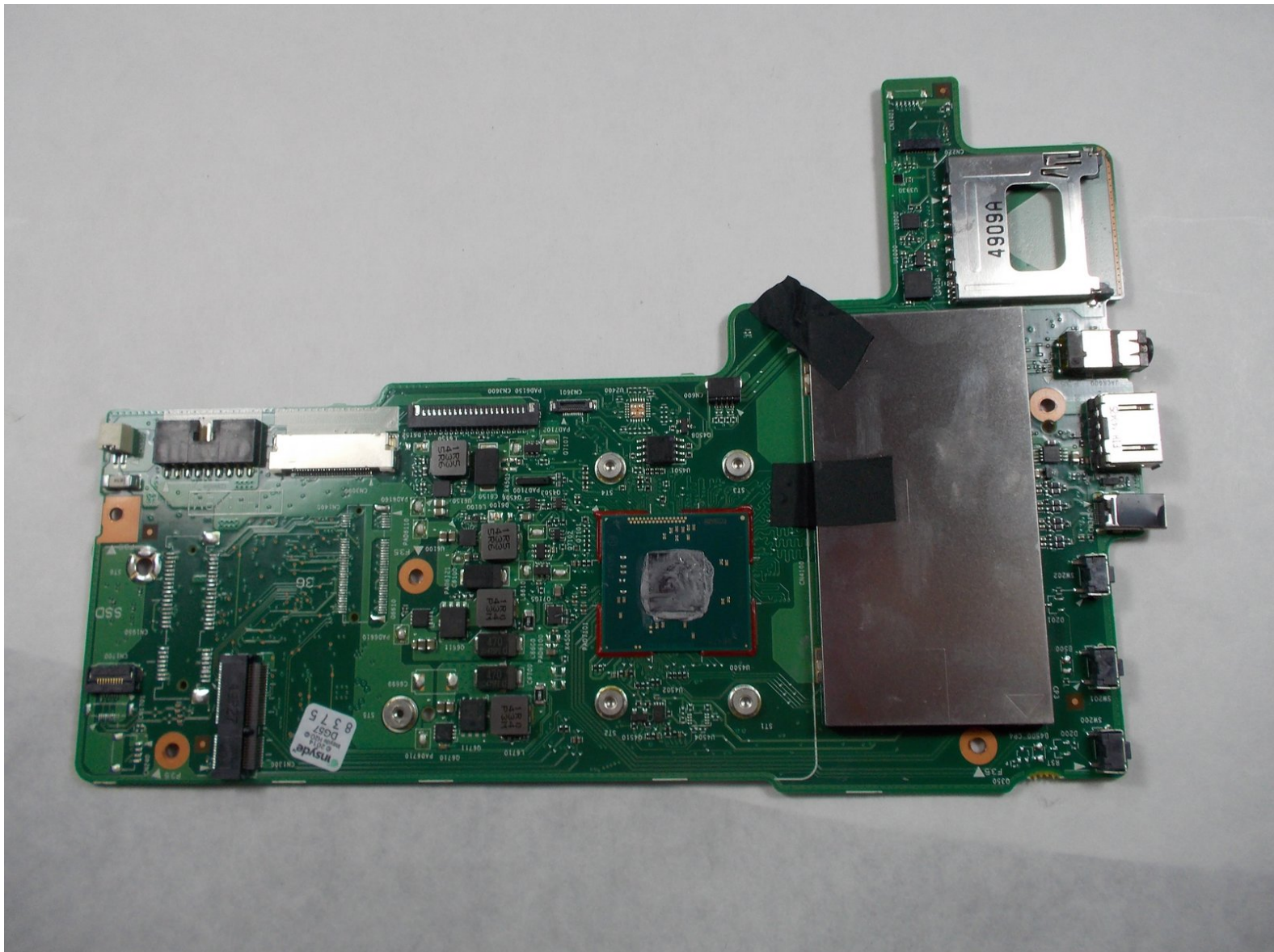


Toshiba Satellite Click 2 L35W-B3204

Motherboard Replacement

How to replace a Toshiba Satellite Click 2 L35W-B3204 motherboard.

Written By: Lexi Lannigan



INTRODUCTION

If your laptop experienced a power surge or short circuit, you may need to replace the motherboard using this guide. This replacement only requires the screen portion of the laptop, so remove the keyboard before beginning.



TOOLS:

- [iFixit Opening Tools](#) (1)
 - [Tweezers](#) (1)
 - [Spudger](#) (1)
 - [Phillips #0 Screwdriver](#) (1)
-

Step 1 — Screen



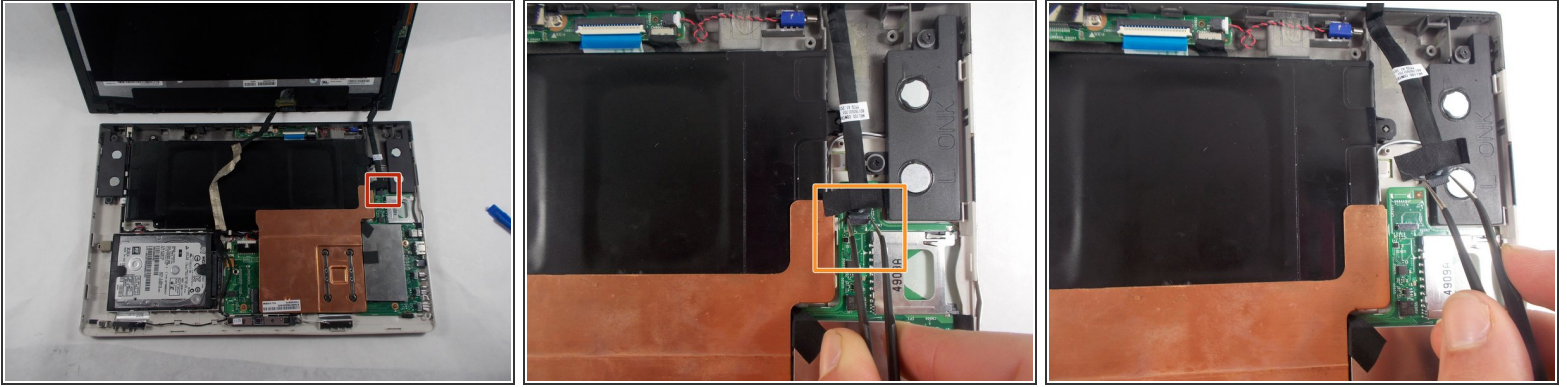
- Begin by inserting the plastic opening tool into the lip that lies between the screen and the plastic housing and gently prying it open. The best place to begin the screen removal is the bottom left side of the screen.
- Continue to work your way around the screen with the opening tool until all the clips are undone and the screen is free.
- Lift screen off of plastic cover to expose the internal components.

Step 2



- Locate the wide, golden connection on the bottom of the screen. Use the black spudger to peel away the tape holding it in place.
- Use tweezers to gently remove the plug from the screen.

Step 3



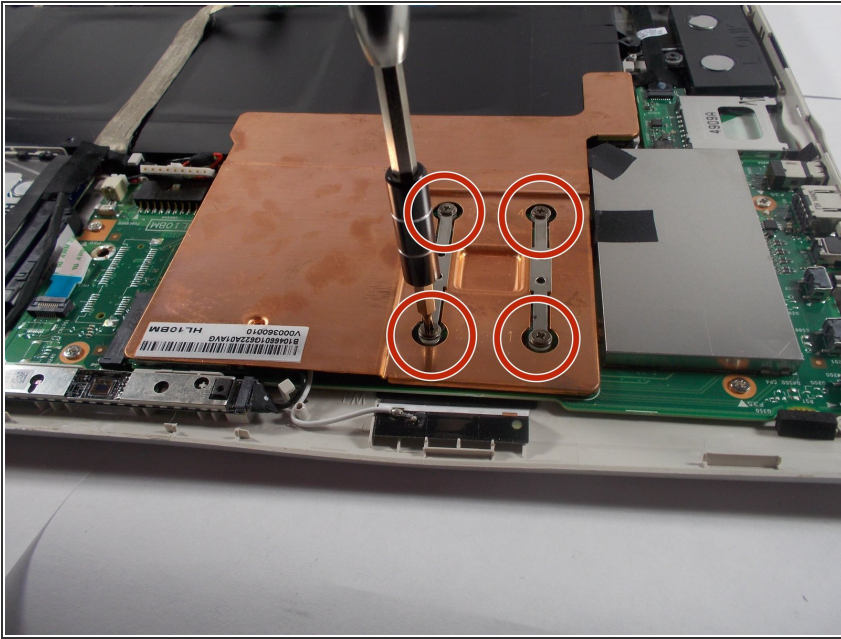
- Trace the black ribbon cable that begins on the right of the screen. This cable is connected to the upper part of the motherboard, which is located near the right speaker.
- Using tweezers, gently grasp the plug on the end of the ribbon cable and remove it from the motherboard.

Step 4



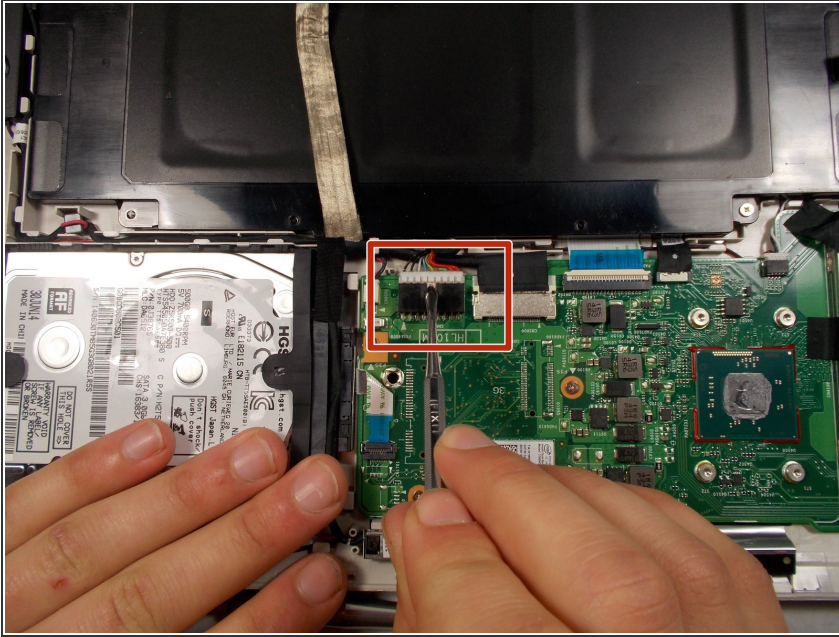
- Your screen is now completely detached from the internal components.

Step 5 — Battery



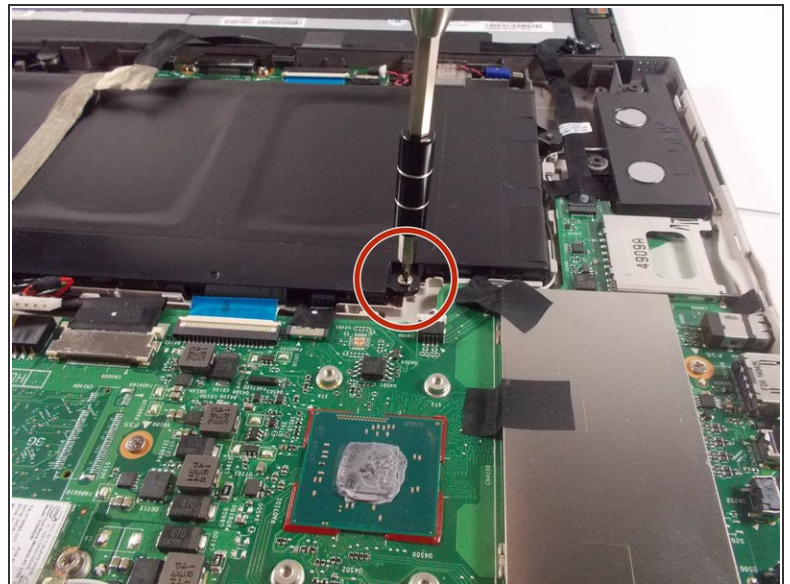
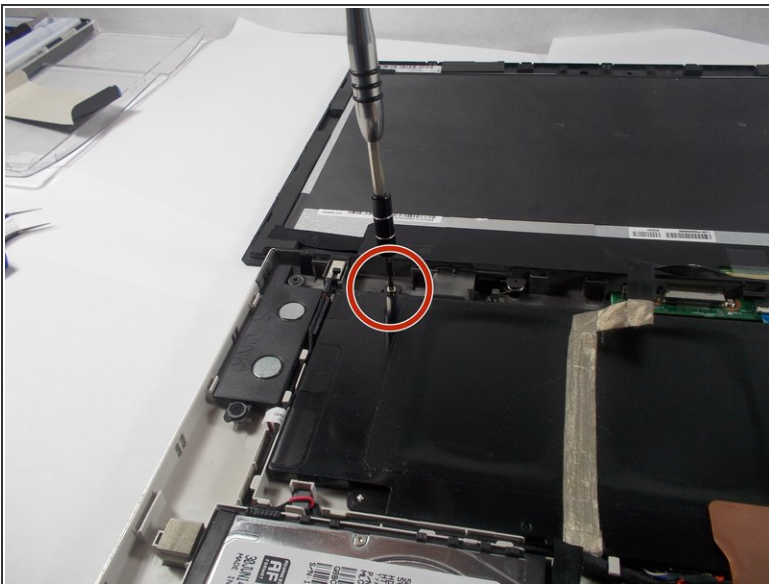
- Remove the copper shield by removing the four Phillips screws that hold the shield in place.

Step 6



- Unplug the battery from the motherboard by pushing the white clip with a metal spudger. You can attempt to use the plastic spudger first, but it may be more difficult.

Step 7



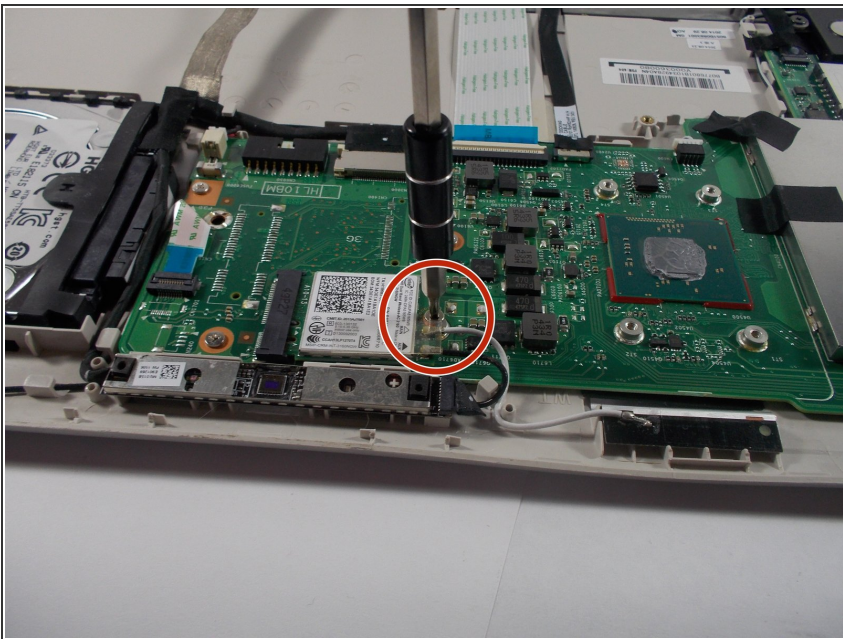
- Remove 2 6mm Phillips #0 screws holding the battery in place.

Step 8



- Remove the battery by lifting on the left side, while holding the ribbon cable above it out of the way.

Step 9 — Motherboard



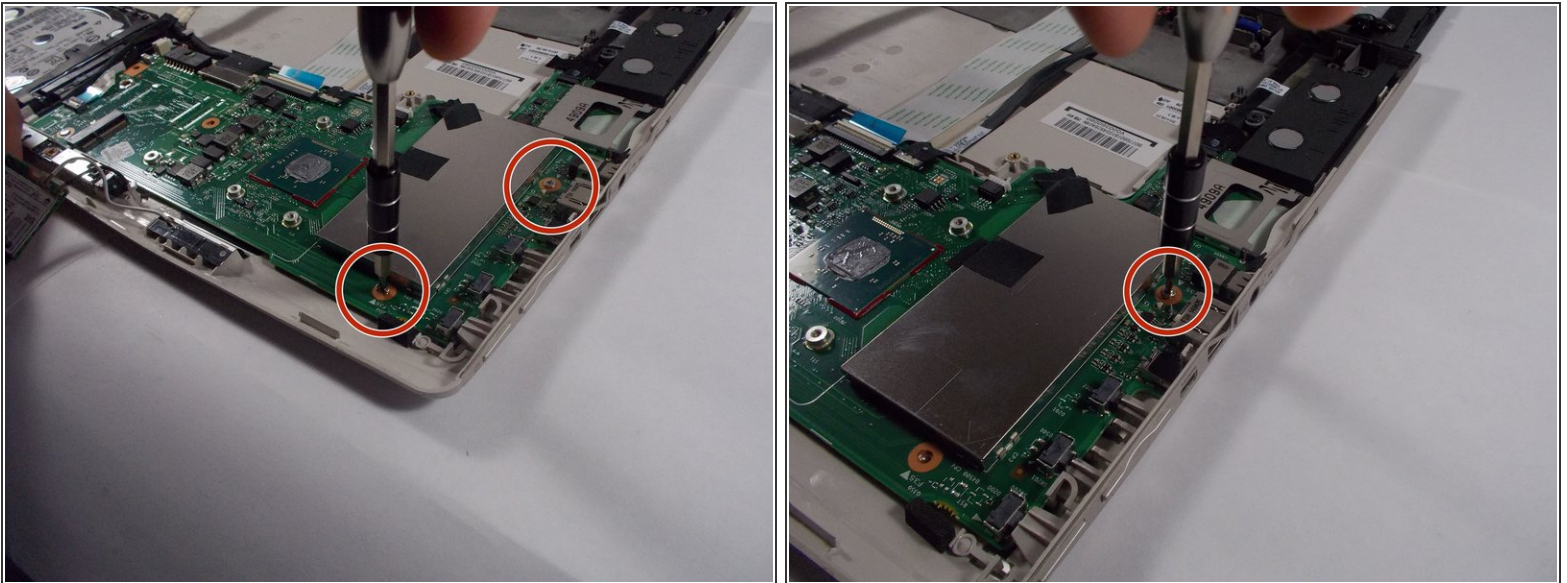
- Use a size 0 Phillips head screwdriver to remove the 4mm screw which secures the Wifi Card in place.
- Make sure to carefully remove Wifi card from the motherboard to prevent damage.

Step 10



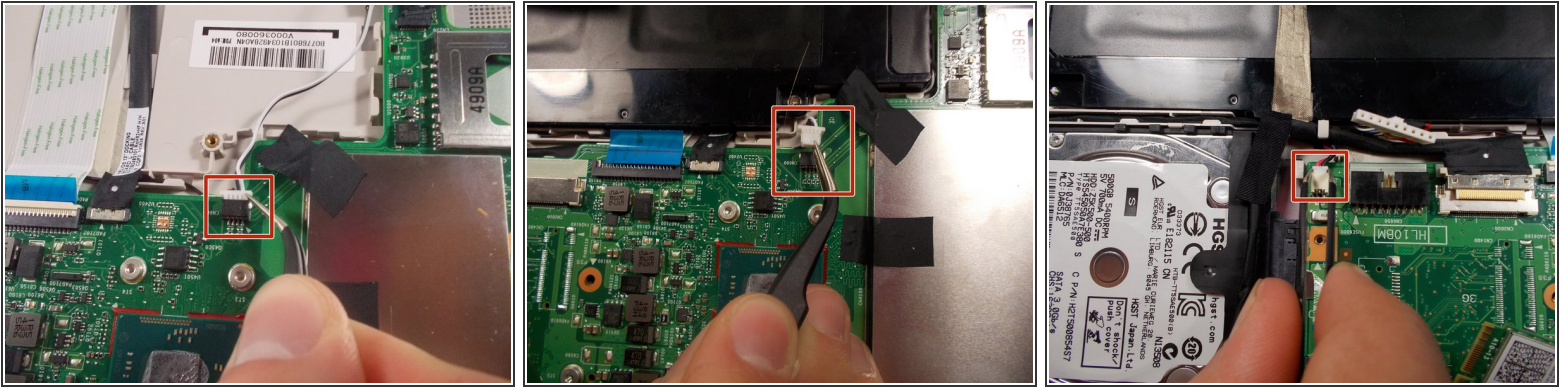
- Remove the middle, top left, and bottom left 4mm screws from the motherboard using the size 0 Phillips screwdriver.
- ⓘ These screws are identified by a solid gold ring around the base of the screw on the motherboard.

Step 11



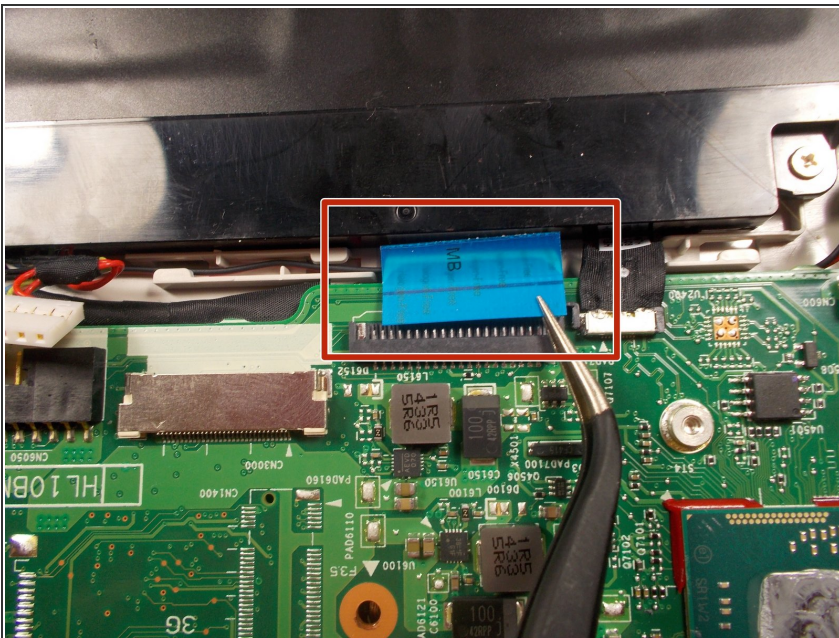
- Proceed taking off 2 additional 4mm Phillips head screws identified by the gold ring.
- ⓘ These screws are located on the top right and bottom right corners of the motherboard.

Step 12



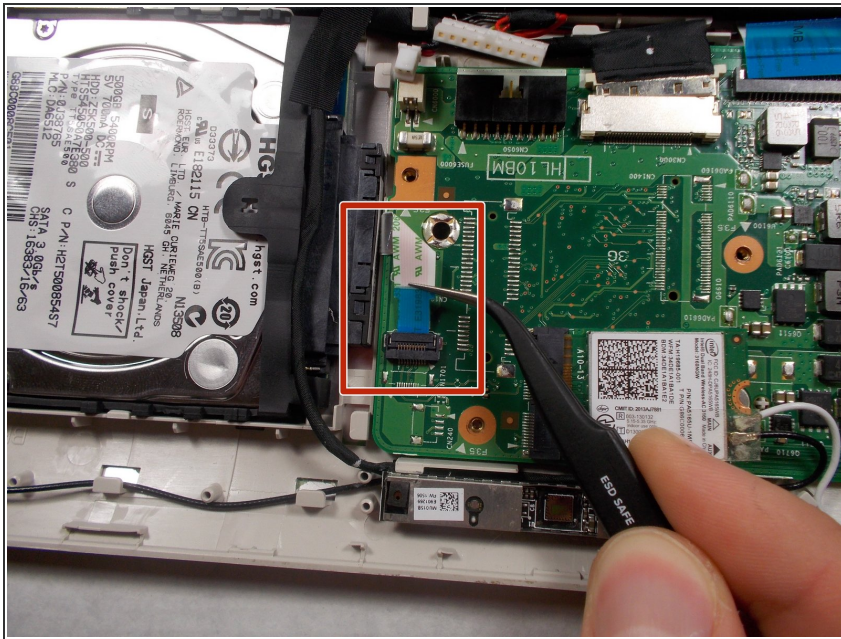
- The next step is to carefully remove the small 3 pin connector using tweezers.
- There are two of these 3 pin connectors, located on the top right and top left regions of the motherboard.

Step 13



- Located on the top middle region of the motherboard, the ribbon cable connector must be disconnected in order to replace the circuit board.
- ⚠ These connections can be fragile and must be handled with caution to avoid damage to the cable.
- Using the tweezers, carefully remove the ribbon cable from the connection port.

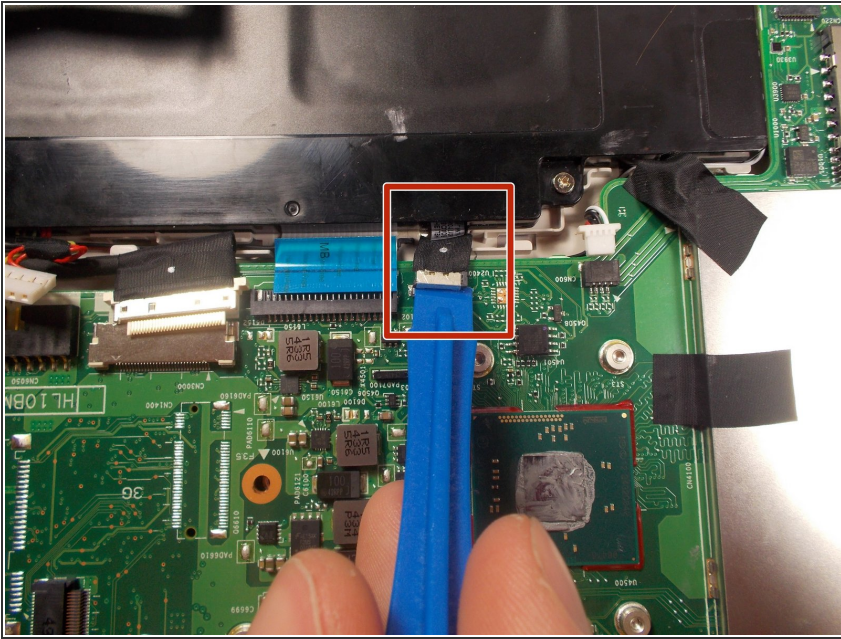
Step 14



- An additional ribbon cable connector is located on the left side of the motherboard, approximately 1.5 inches from the bottom corner.

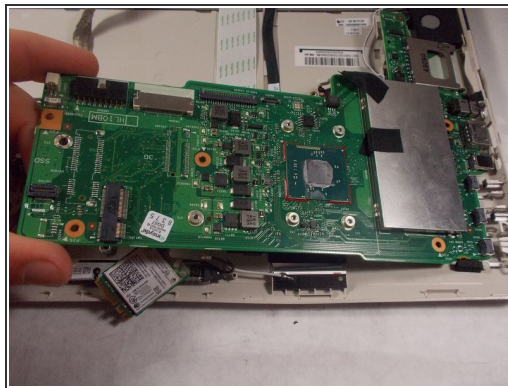
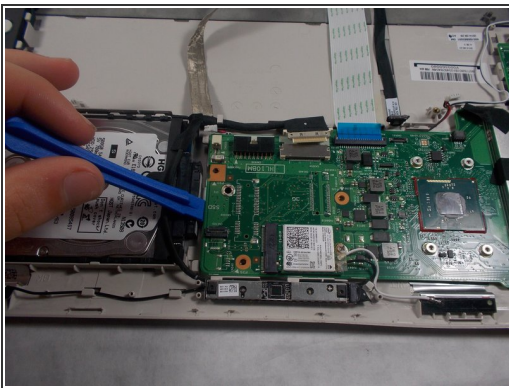
⚠ As stated before, remove the ribbon cable connector carefully and with caution using tweezers.

Step 15



- The final connector pin is located in the upper right region of the motherboard, as well as to the right of the previous top middle ribbon pin connection.
- Using the iFixit opening tool, carefully apply pressure to lift up the connection from the motherboard.

Step 16



- Now that the motherboard is completely disconnected and all screws have removed, gently apply upward pressure to the bottom of the motherboard using the iFixit opening tool.
- The motherboard should pop up and able to be taken out by hand.

To reassemble your device, simply follow these instructions in reverse order.