



Asus A53E-ES92 Wifi Card Replacement

This guide will show you how to remove the wifi...

Written By: Robyn Lam



INTRODUCTION

This guide will show you how to remove the wifi card on an Asus A53E-ES92.

TOOLS:

Phillips #0 Screwdriver (1)

Step 1 — Wifi Card



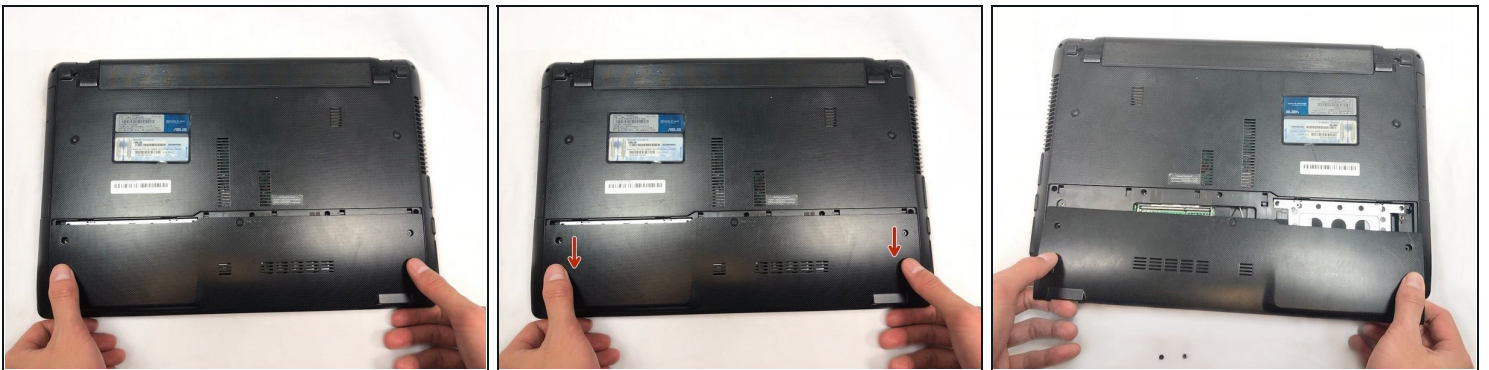
- Turn laptop over to expose the bottom panel

Step 2



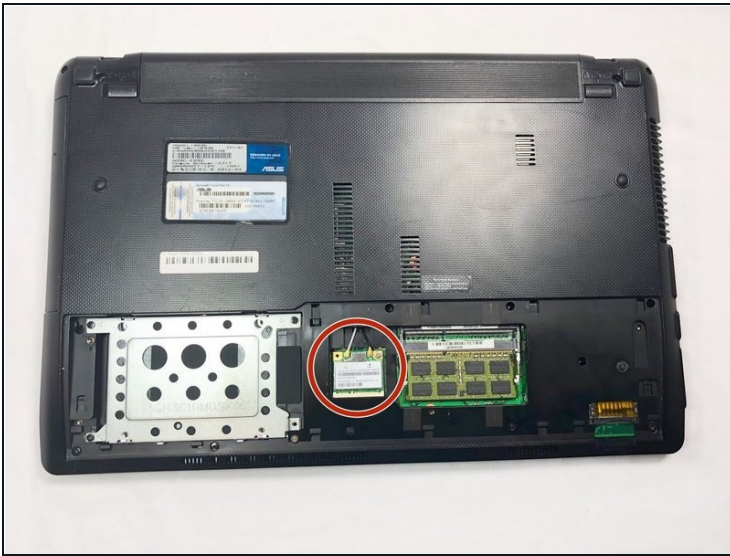
- Use a Phillips #0 screwdriver to remove the two screws circled in picture.

Step 3



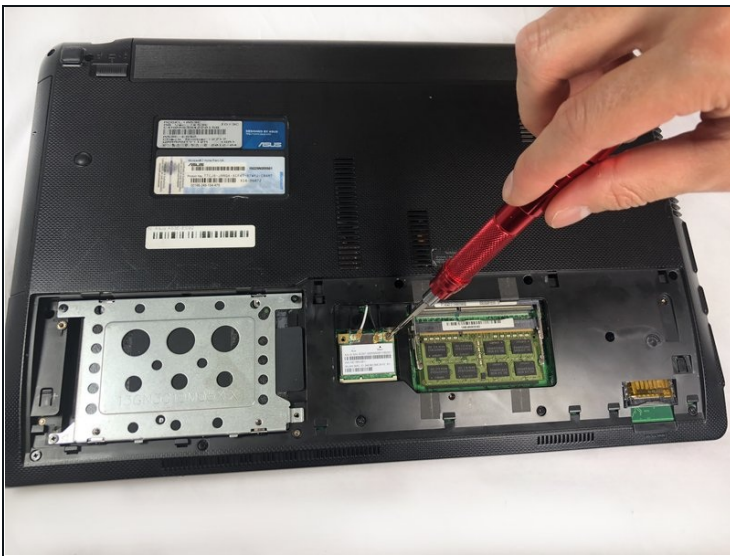
- Place fingers on panel as shown below.
- Apply slight force while gently sliding the panel away from the laptop.
- Remove panel.

Step 4



- Locate wifi card, circled in red.

Step 5



- Remove the two screws using the Phillips #0 screwdriver.

Step 6



- Remove the two pin connectors from the wifi card.

Step 7



- Remove the Wi-Fi card from the device.

To reassemble your device, follow these instructions in reverse order.