



# Toshiba Satellite L875D-S7210 RAM Replacement

Use this guide to replace the RAM in your Toshiba Satellite L875D-S7210.

Written By: Ian M Sloop



## INTRODUCTION

If your computer runs more slowly than it used to, your random access memory (RAM) chip may need replacement. Use this guide to replace your RAM.



### TOOLS:

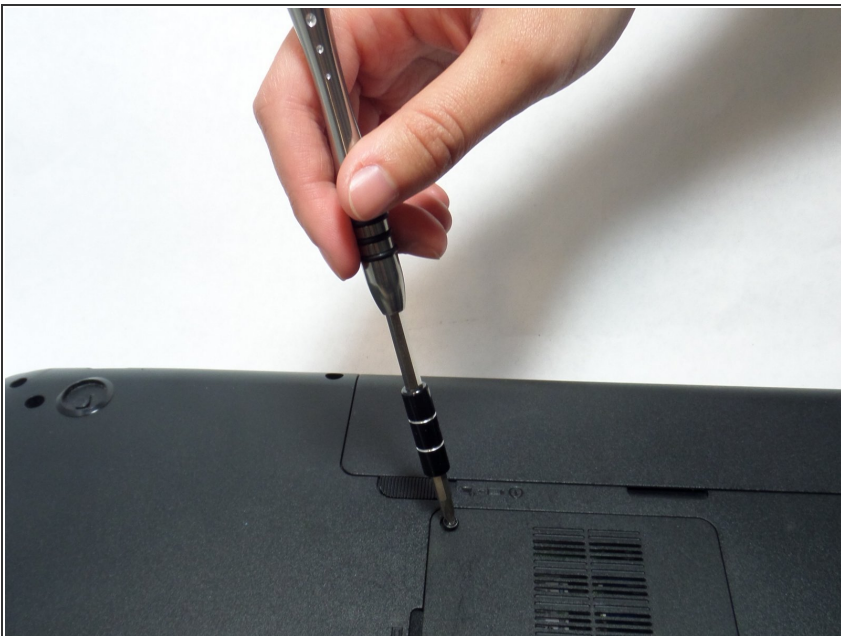
- [Metal Spudger](#) (1)
  - [Phillips #1 Screwdriver](#) (1)
-

## Step 1 — RAM



- Flip the laptop over and locate the screw beneath the left battery latch.

## Step 2



- Use the Phillips #1 screwdriver to remove the screw.

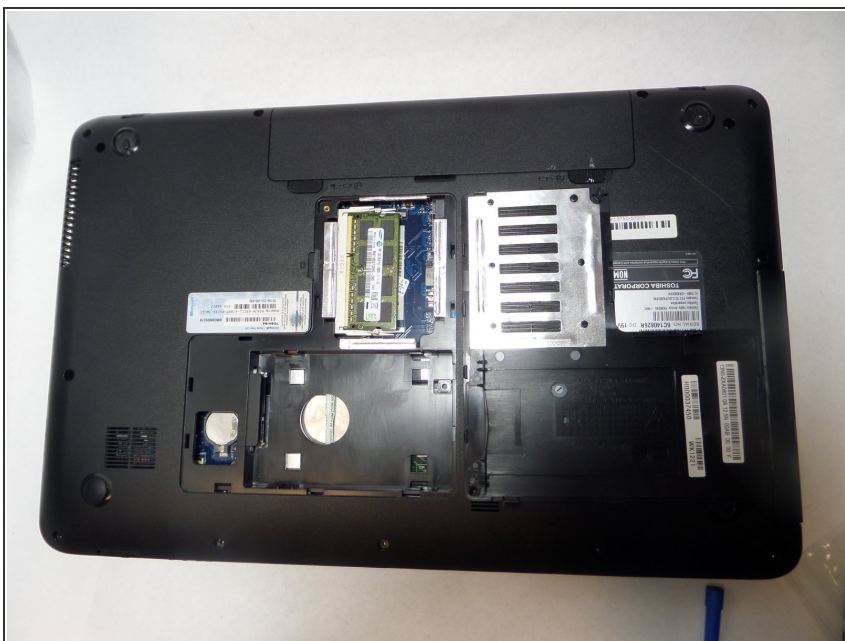


### Step 3



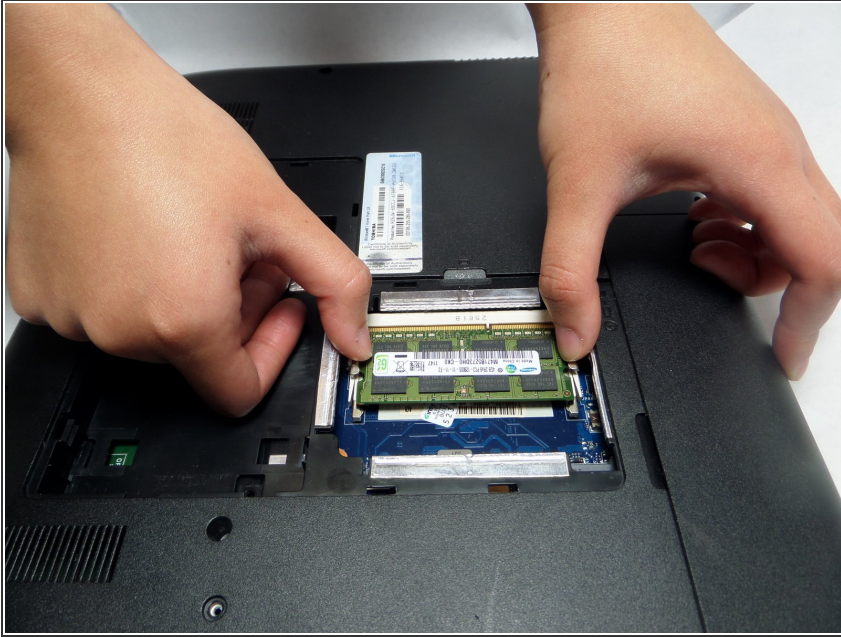
- Using a metal spudger, slip it into the groove and gently pry open the cover.

### Step 4



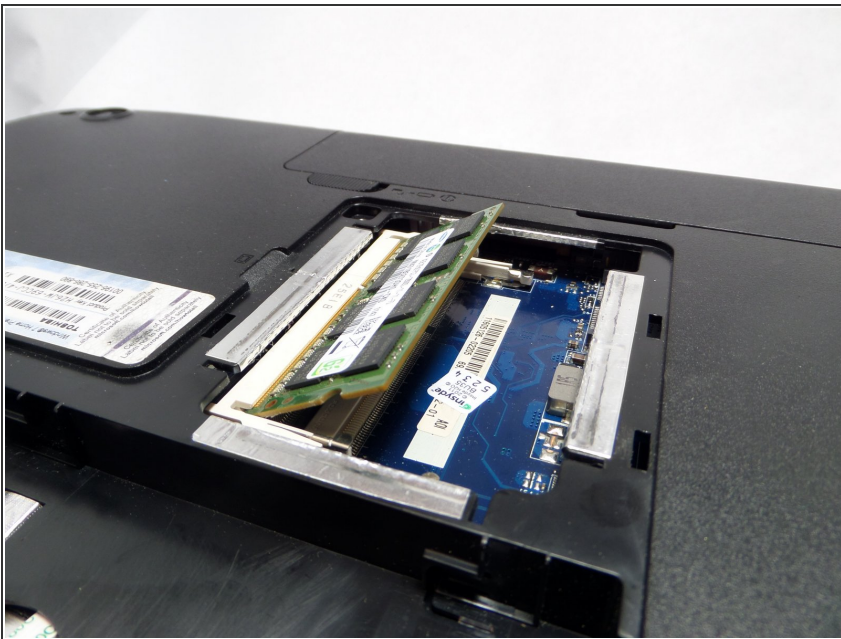
- Locate the RAM card at the top left corner closest to the bottom of the battery.

## Step 5



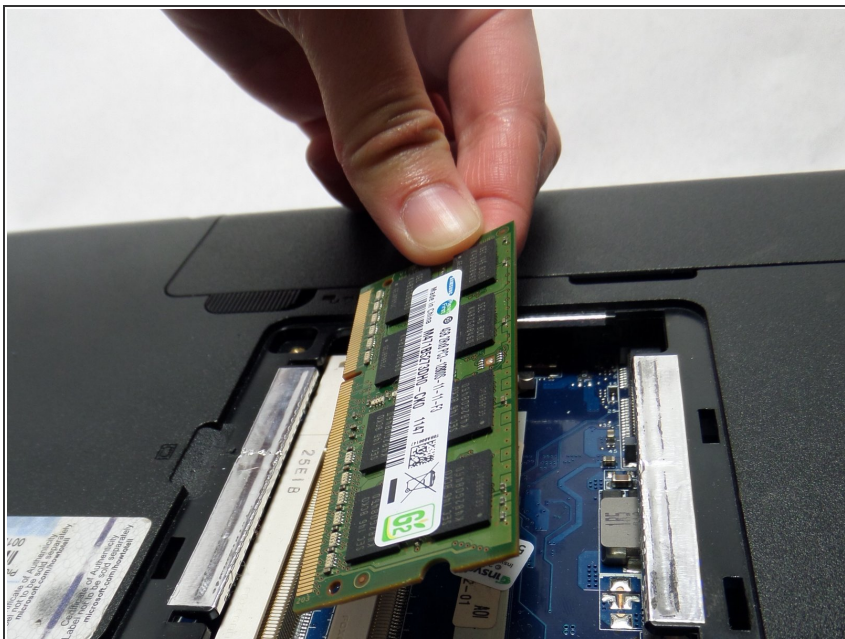
- Using two fingers, push the two levers outwards in opposite directions of each other to release the RAM card.

## Step 6



- When done correctly, the RAM card should pop up like this.

## Step 7



- Remove the existing RAM card and insert the your new RAM by snapping the RAM in place. Make sure the notch on your RAM card matches up with the slot.

To reassemble your device, follow these instructions in reverse order.