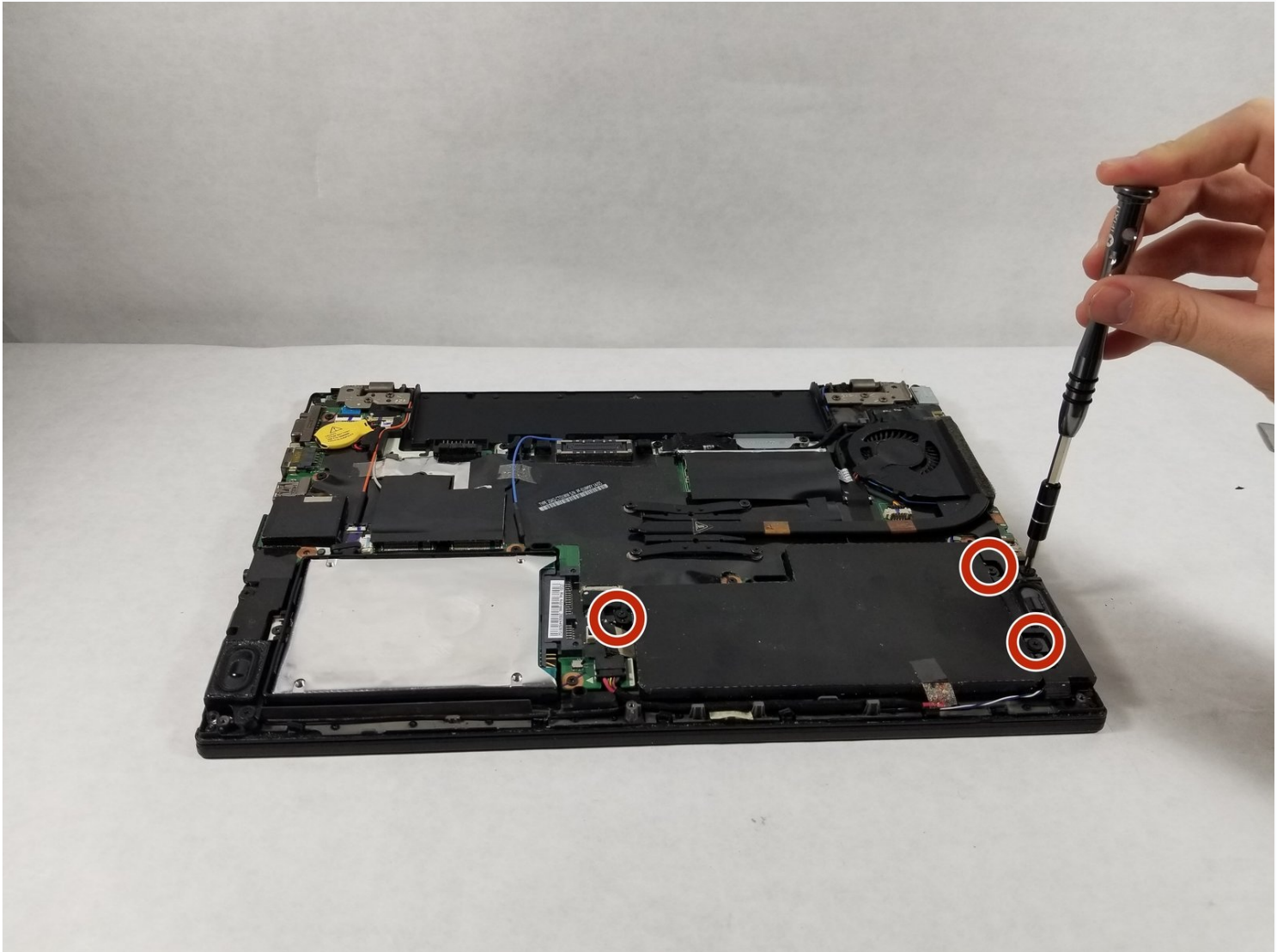




Lenovo Thinkpad T440S Battery Replacement

Is your device turning off unexpectedly or not...

Written By: Terelle Montalvo



INTRODUCTION

Is your device turning off unexpectedly or not properly holding a charge? Consider using this guide to replace the battery in your device.

TOOLS:

[Phillips #1 Screwdriver](#) (1)
[Metal Spudger](#) (1)

PARTS:

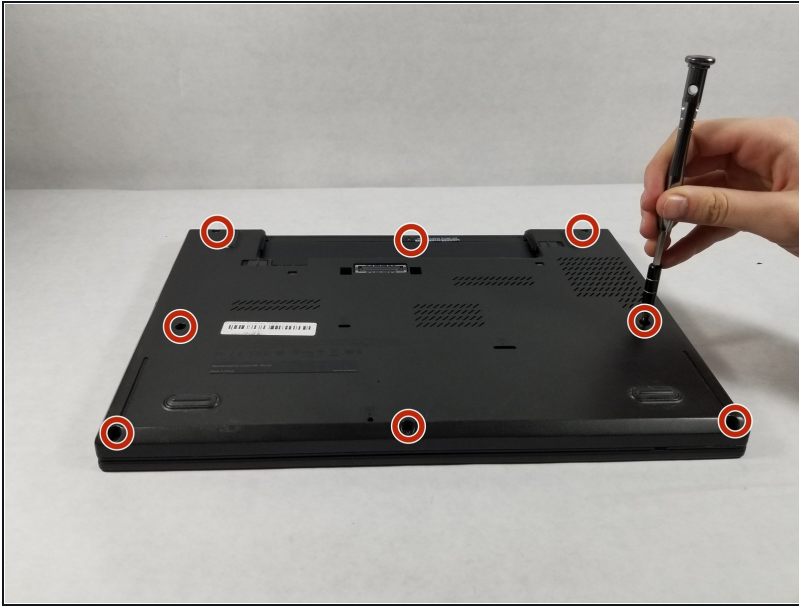
[Lenovo ThinkPad Internal T440 / T450 / T460 / X240 / X250 / X270 Battery](#) (1)

Step 1 — Back Panel



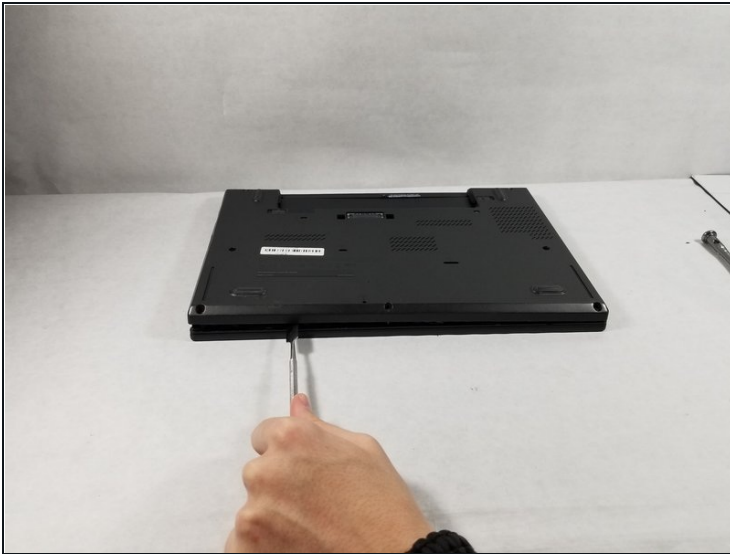
- Make sure to power down and turn off your device before proceeding with the repair.
- Flip your laptop over so that the backside is facing you.

Step 2



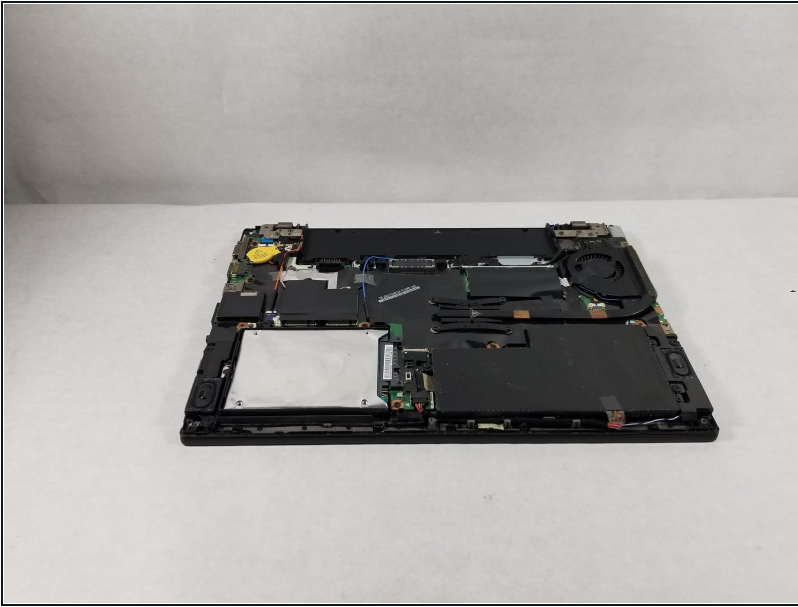
- Using a Phillips #1 screwdriver, remove the eight screws securing the backplate.
- Don't try to force screws which won't come out. They are held in place by a stopper on the reverse side. This will not prevent you from removing the backplate.

Step 3



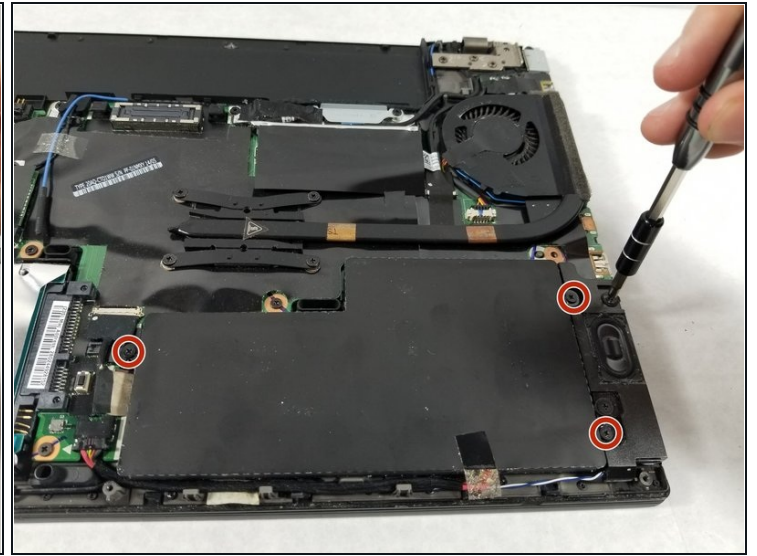
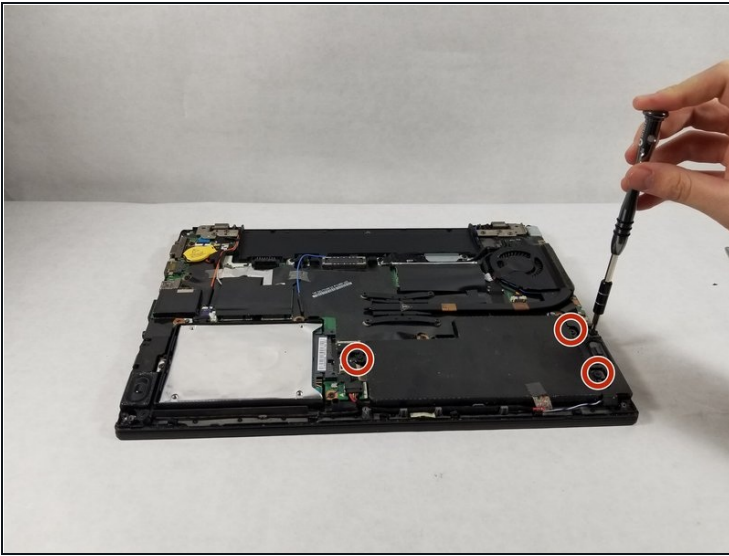
- Using the metal spudger, wedge it in the seam where the backplate meets the front plate and run the tool along the seam to separate the backplate.

Step 4



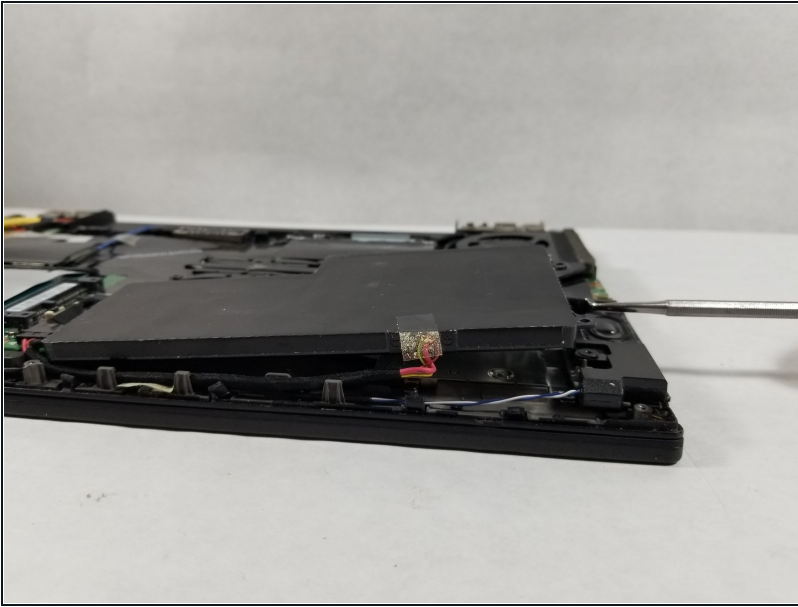
- Remove the back panel from the device.

Step 5 — Battery



- Use the Phillips #1 screwdriver to remove the three screws holding in the battery.

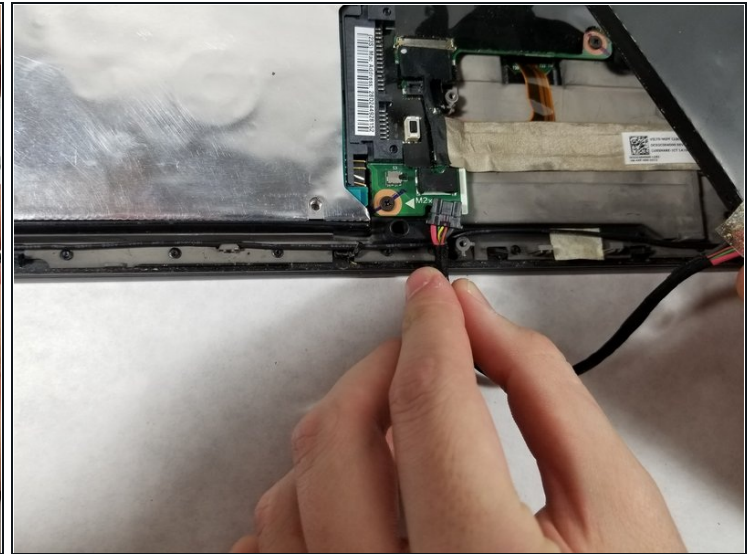
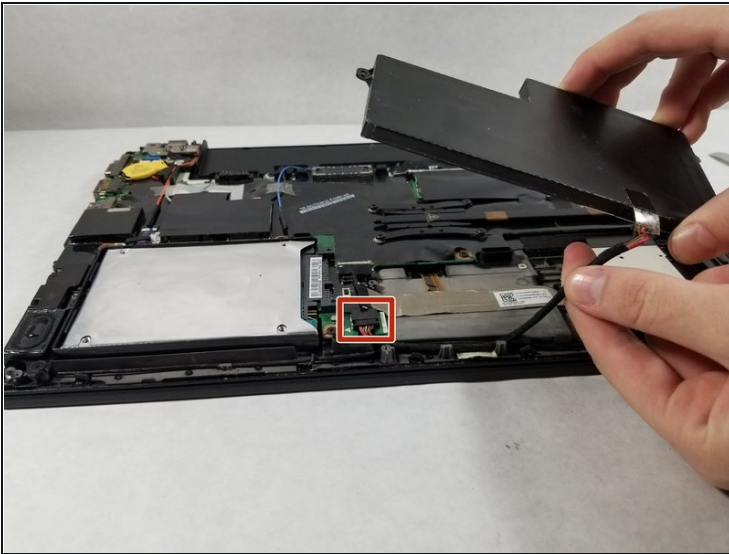
Step 6



- Use the spudger to lift the battery out of its compartment.

⚠ Although shown in this photo, please refrain from using the metal spudger on any lithium-ion batteries. The metal spudger can easily puncture the battery and cause further problems with the device.

Step 7



- Unclip the battery from the device.
- Remove the battery from the device.

To reassemble your device, follow these instructions in reverse order.