



Dell Chromebook 13-7310 Network Card Replacement

A replacement guide for the network card on the Chromebook 13-7310.

Written By: Brett Raymond



INTRODUCTION

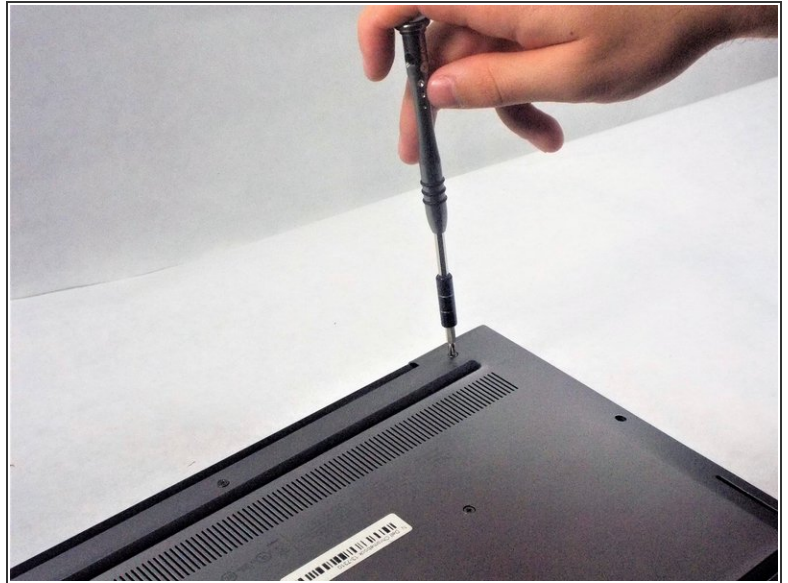
Are you having trouble connecting your Chromebook to the internet? Your network card may be damaged, and in need of replacement! Follow this easy guide to quickly get your computer connected to the internet again.



TOOLS:

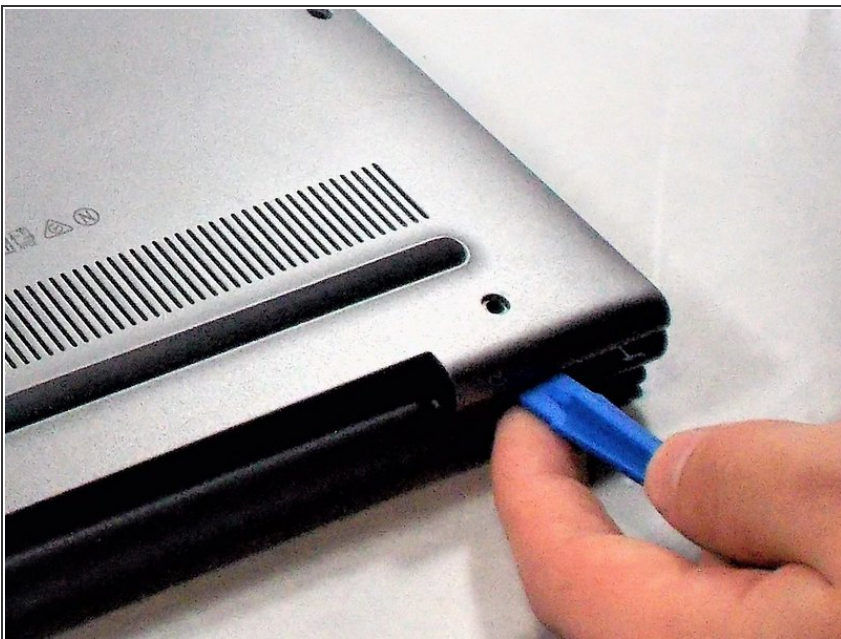
- [Spudger](#) (1)
 - [Phillips #1 Screwdriver](#) (1)
 - [iFixit Opening Tools](#) (1)
 - [Phillips #0 Screwdriver](#) (1)
-

Step 1 — Back Cover



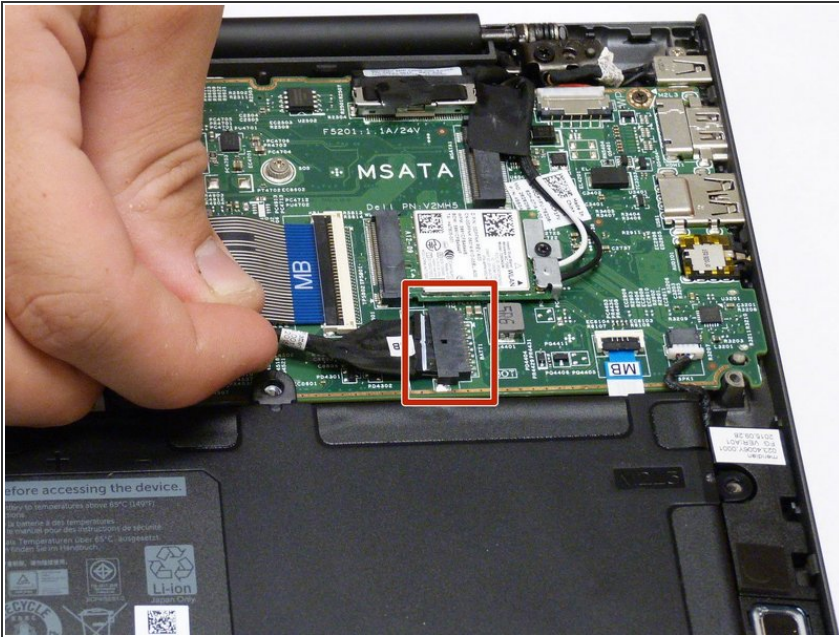
- Remove the eleven 3mm Phillips #1 screws.

Step 2



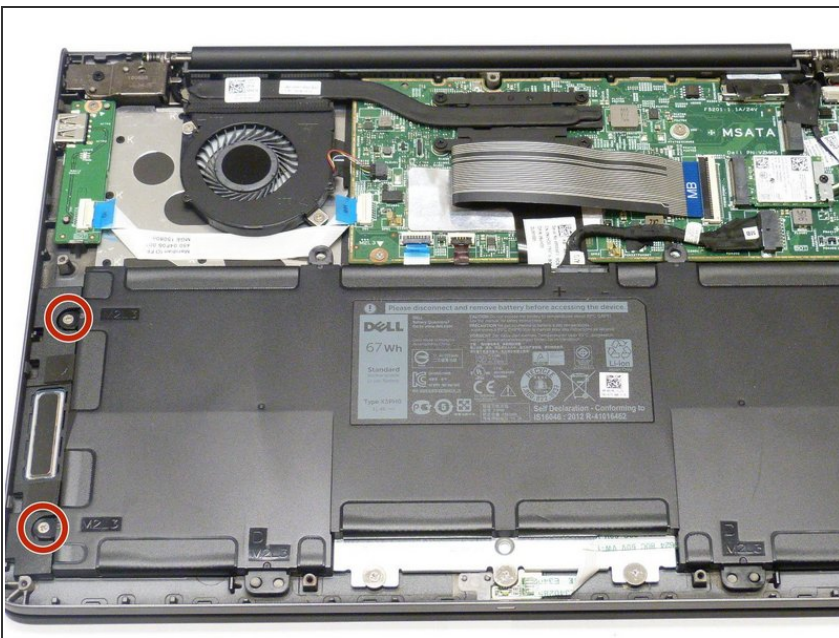
- Use a plastic opening tool to gently remove the back panel.
- ⓘ It can be easier to pry open near a corner.

Step 3 — Battery



- Use your fingers to remove the connecting cable to the battery unit. Firmly grab the cord closest to the motherboard connection and pull straight back.

Step 4



- Remove the four 2mm screws on the sides of the battery.

Step 5



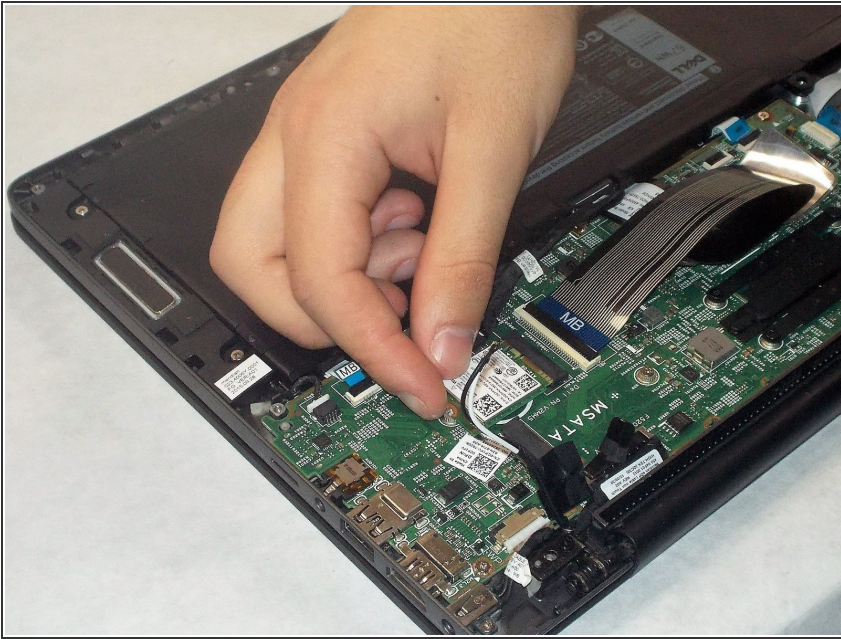
- To remove the battery, lift up on one side to get your fingers underneath and lift away.

Step 6 — Network Card



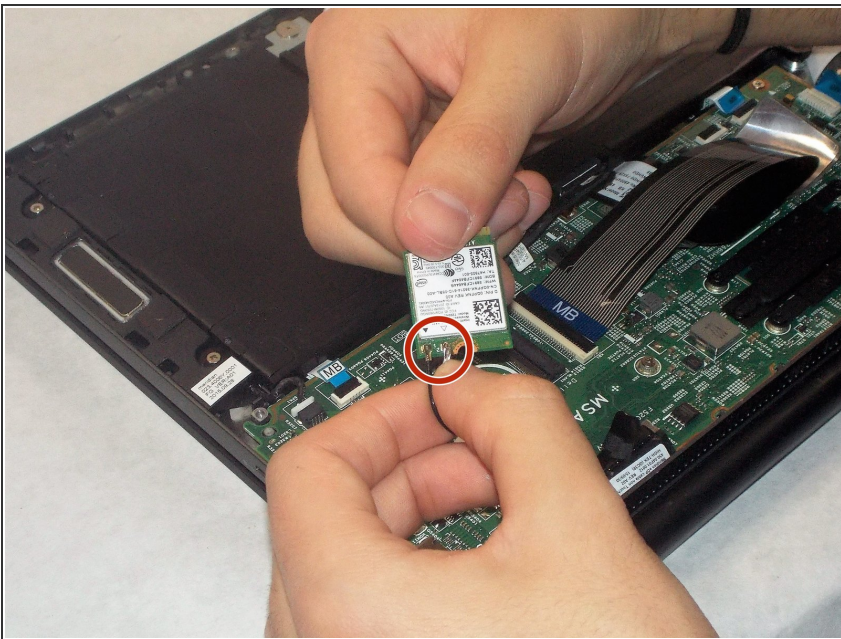
- Use #1 Phillips screwdriver to remove the 1mm screw in the network card.

Step 7



- Disconnect the network card from motherboard socket.

Step 8



- Disconnect 2 cable connectors from network card.
- ⓘ If the cables are stuck, continue to gently wiggle them until they disconnect.

To reassemble your device, follow these instructions in reverse order.