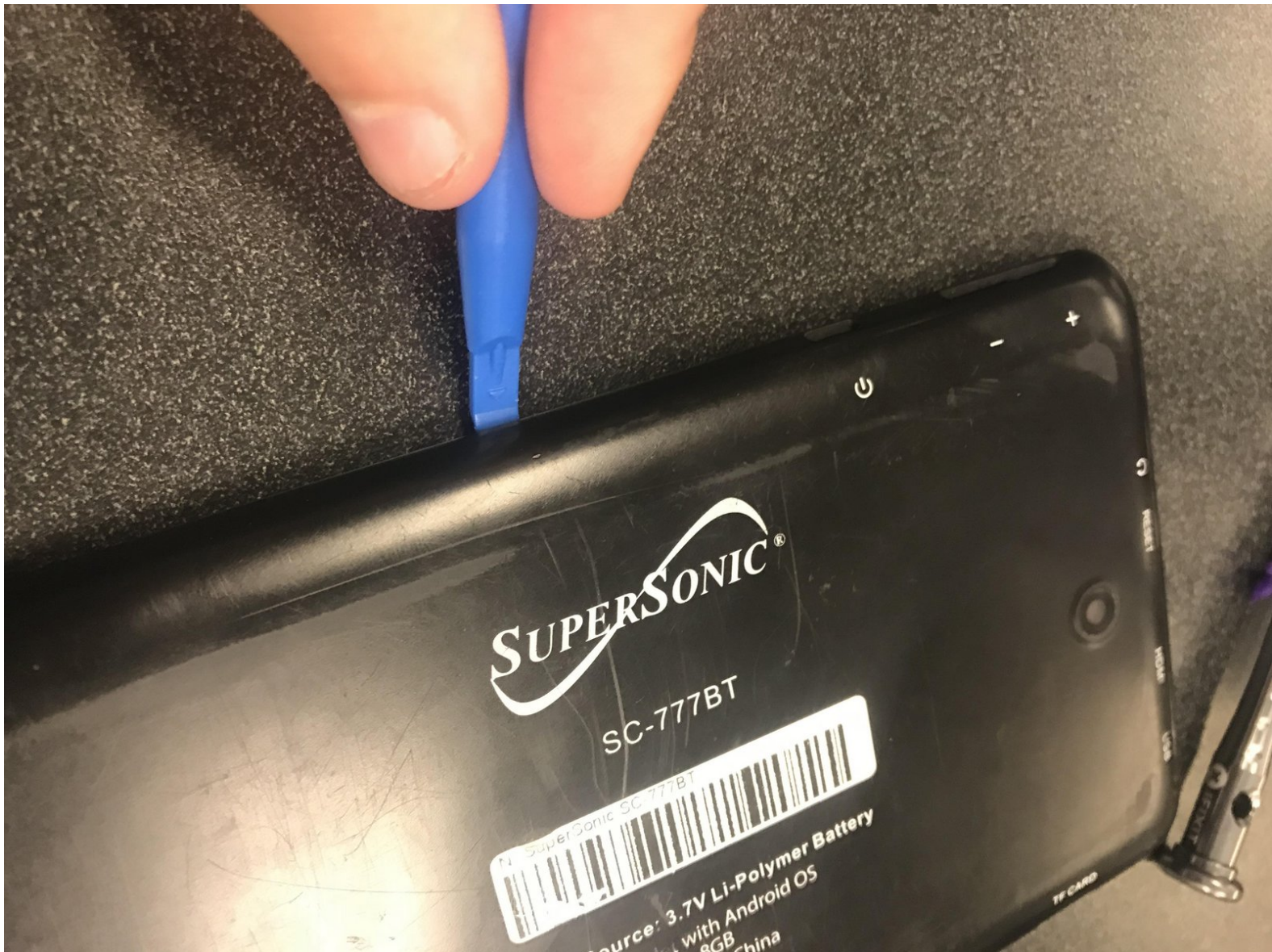




# SuperSonic Matrix Mid SC-999 Camera Replacement

On an Android Supersonic, the camera might not have the best quality. This guide will show you how to Replace The Supersonic camera.

Written By: Logan Robinson



This document was generated on 2021-02-27 08:58:50 AM (MST).



## TOOLS:

- [Phillips #0 Screwdriver](#) (1)
-

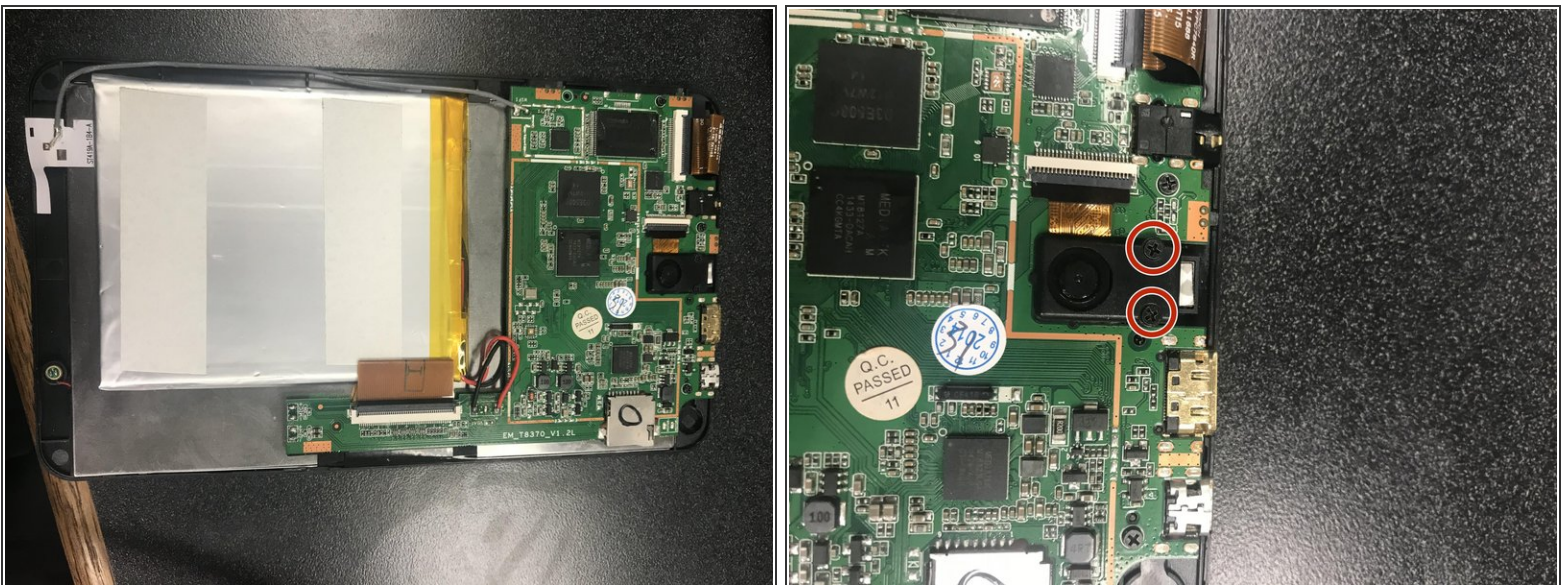


## Step 1 — Opening the Back



- Open up the back on the tablet.

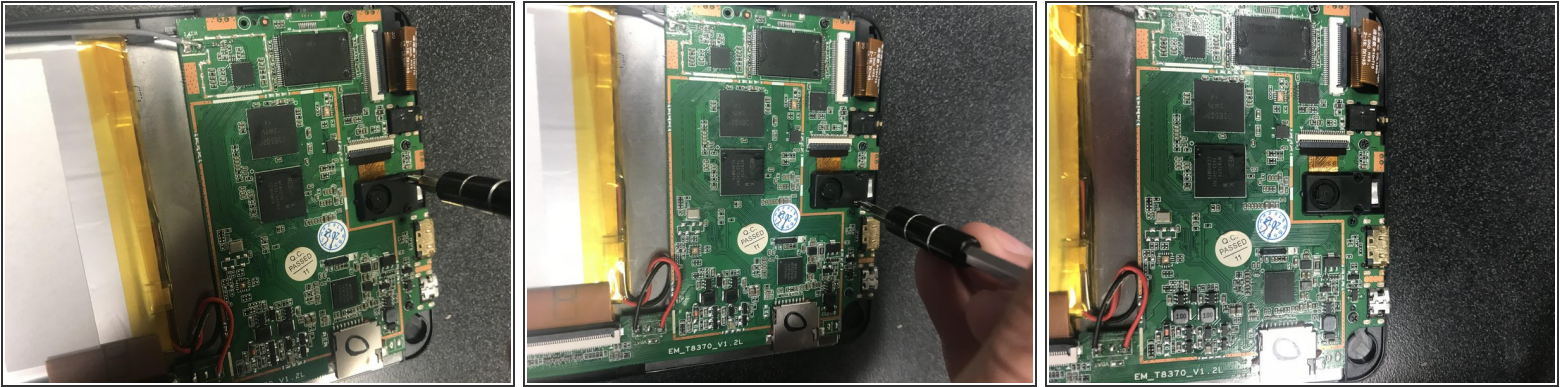
## Step 2 — Finding the Camera



- Locate the camera.
- Unscrew the two screws.

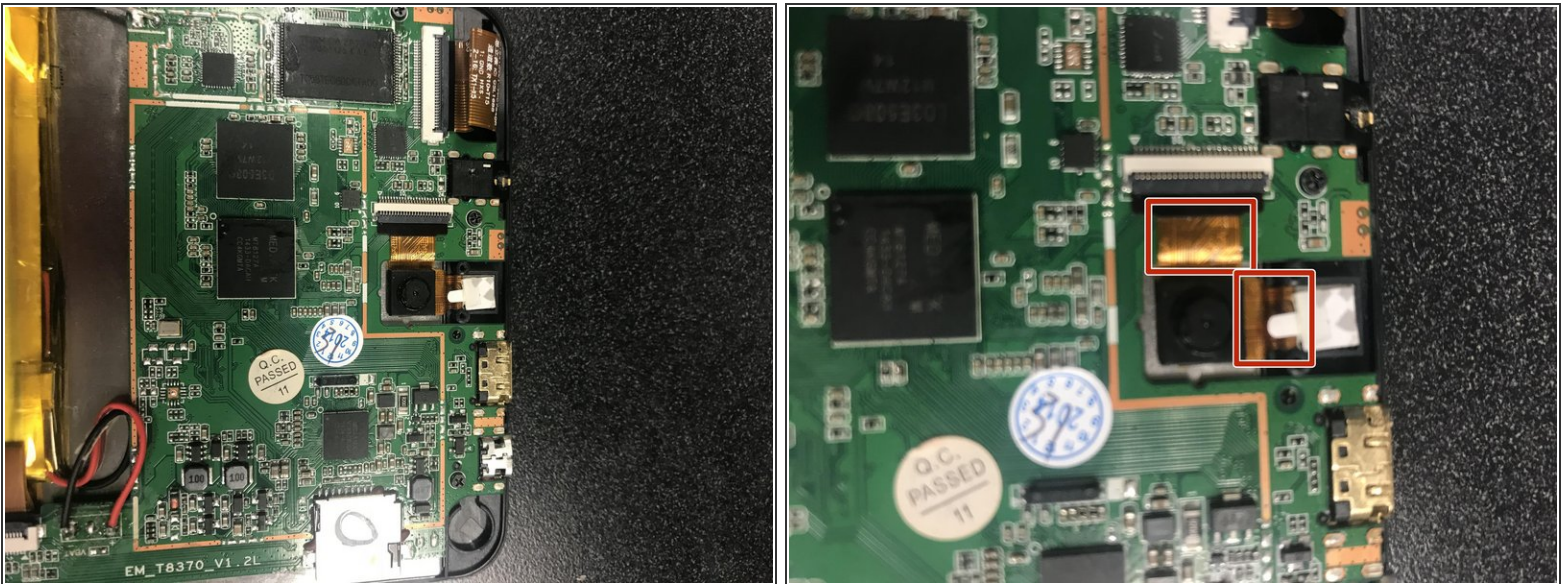


### Step 3 — Unscrewing the Cover



- Use the J0 Phillips screw driver to unscrew the the two small screws on either side of the black peice.

### Step 4 — Opening Up to the Camera



- Pull the black camera cover off and locate the camera with two gold bands running off upwards and to the right.

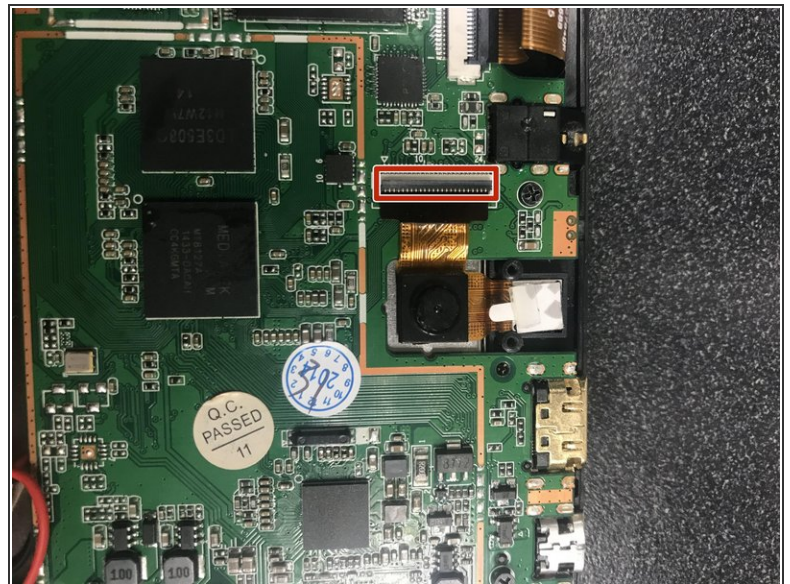
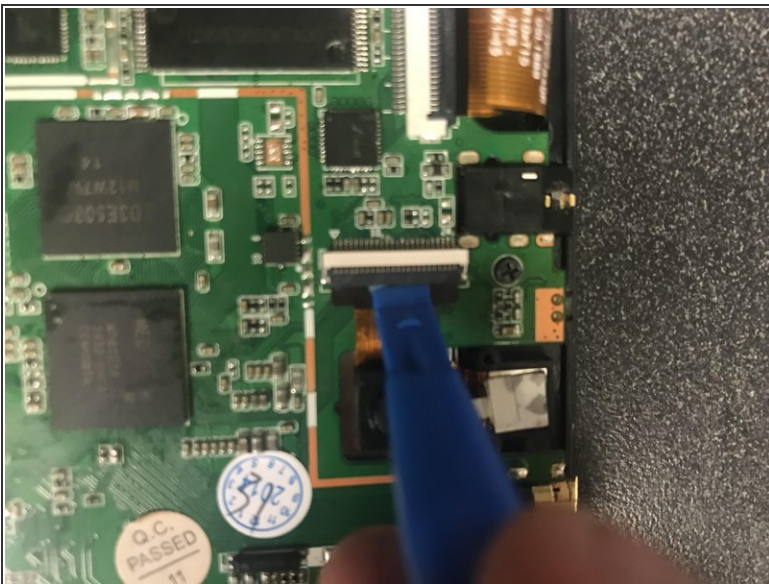


## Step 5 — Finding Where the Camera and Motherboard Meet



- Follow the gold band the runs up towards the white and grey box connected to the green plate.

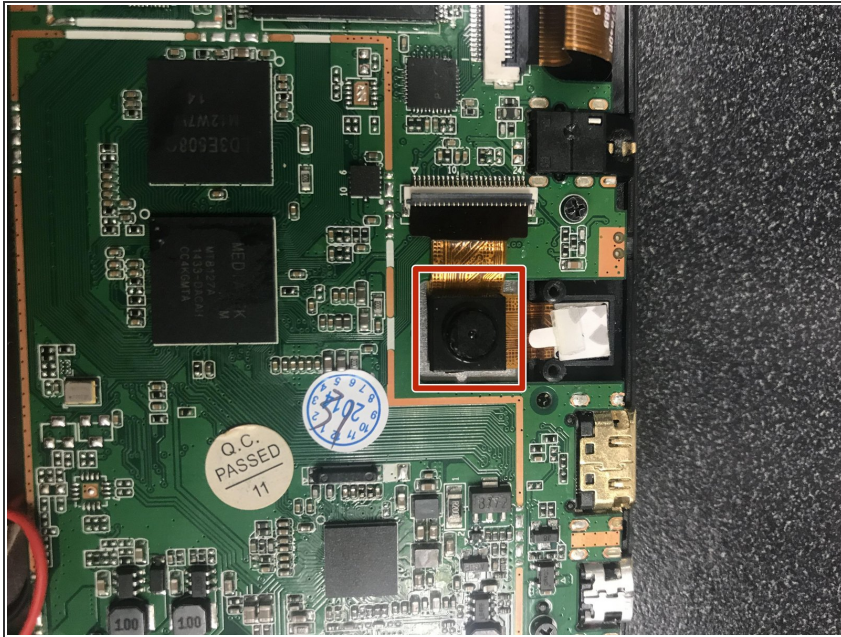
## Step 6 — Unhocking the Camera from Motherboard



- Use the wedge from step one to lift the grey box up.
- The grey piece should open up towards you.

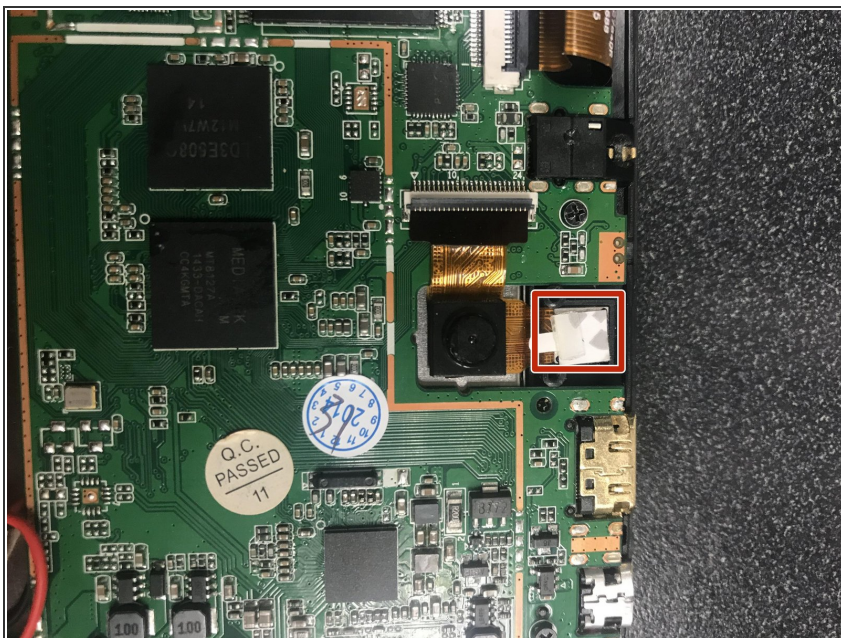


## Step 7 — Finding the Camera Pt. 2



- Now turn your attention back the camera.

## Step 8 — Finding the Front Camera



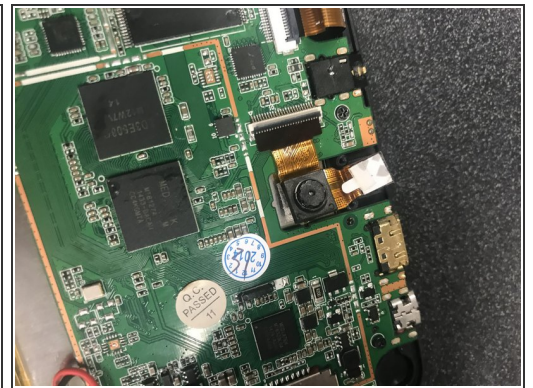
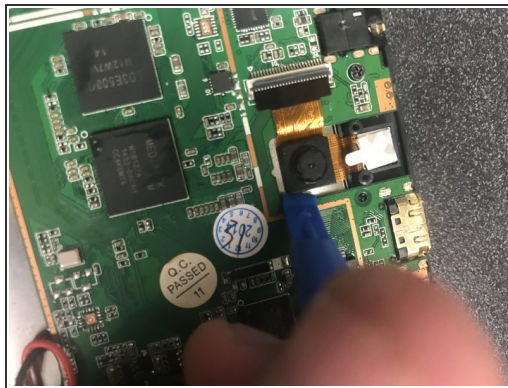
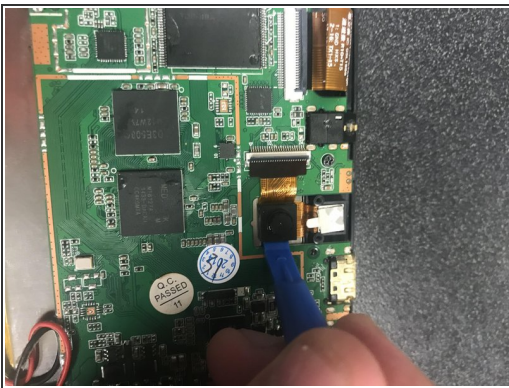
- Next, Follow the second gold band to right to the white paper, or the front camra.

## Step 9 — Unhocking the Front Camera from device



- Now, carefully remove the front camera with the same wedge from step one, six, and eight.

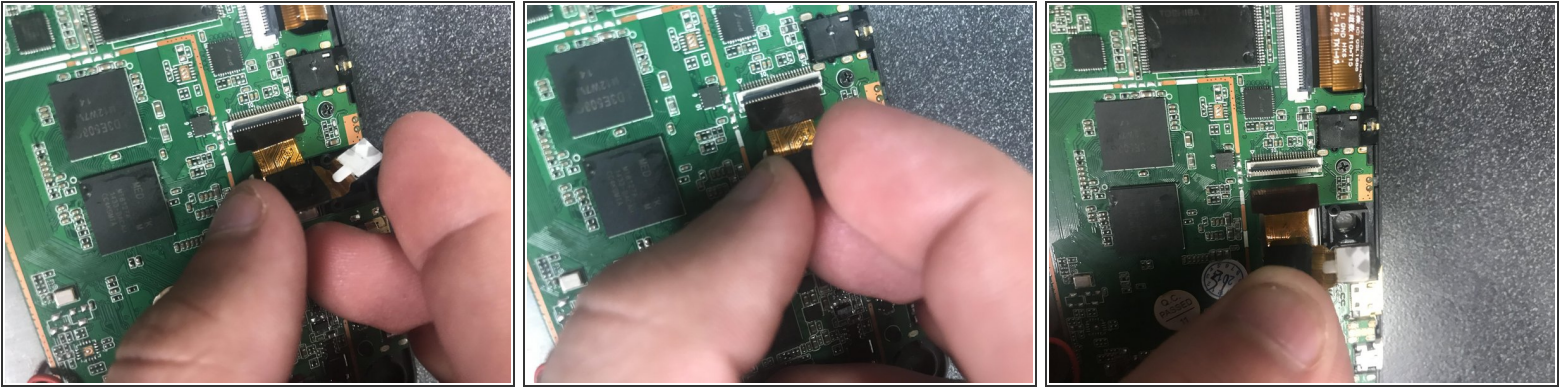
## Step 10 — Unhocking the Back Camera from Device



- Use the same wedge used in step one and step six to go under the camera and carefully pry away from the silver plating.



## Step 11 — Taking the Camra System Off the Device.



- When the camera becomes loose, gently pull up and out to the right to slide the gold band out of the white and grey box.

To reassemble your device, follow these instructions in reverse order.