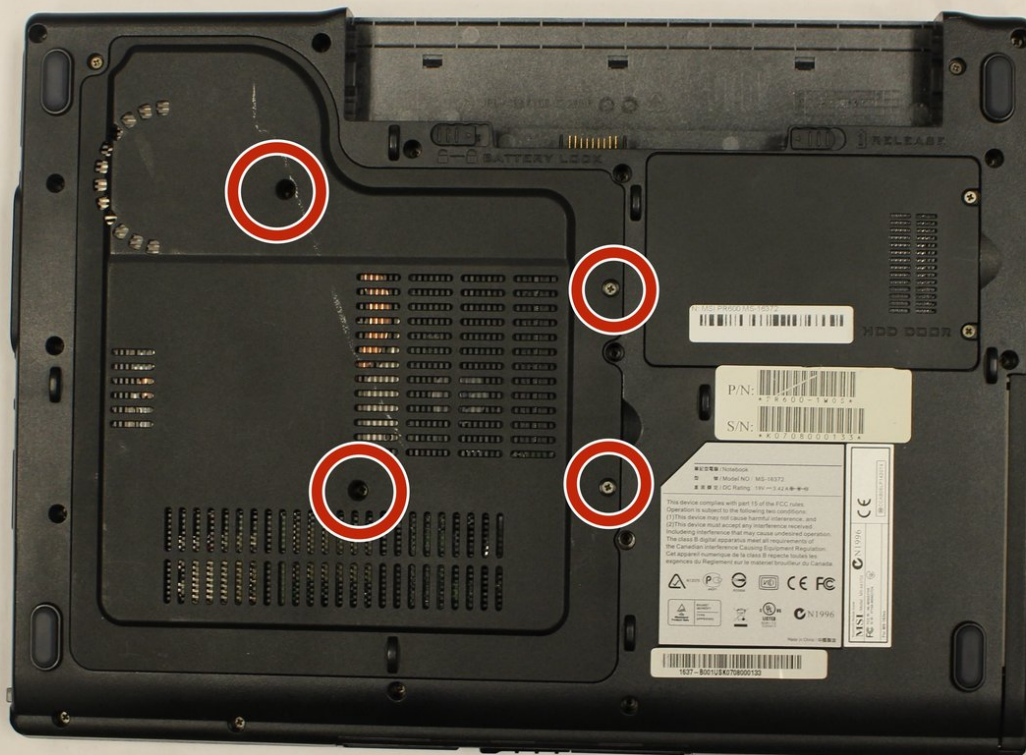




MSI PR600 MS-16372 RAM Replacement

If you can hear your laptop turning on, but the screen is black you may need to take out the RAM to reset the computer.

Written By: Lauren Mewes



INTRODUCTION

In order to start this process of taking the RAM out and putting it back in, you must remove turn off your laptop and then remove the battery. Follow the battery replacement prerequisite before starting this guide.



TOOLS:

- [Phillips #00 Screwdriver](#) (1)
-

Step 1 — Battery



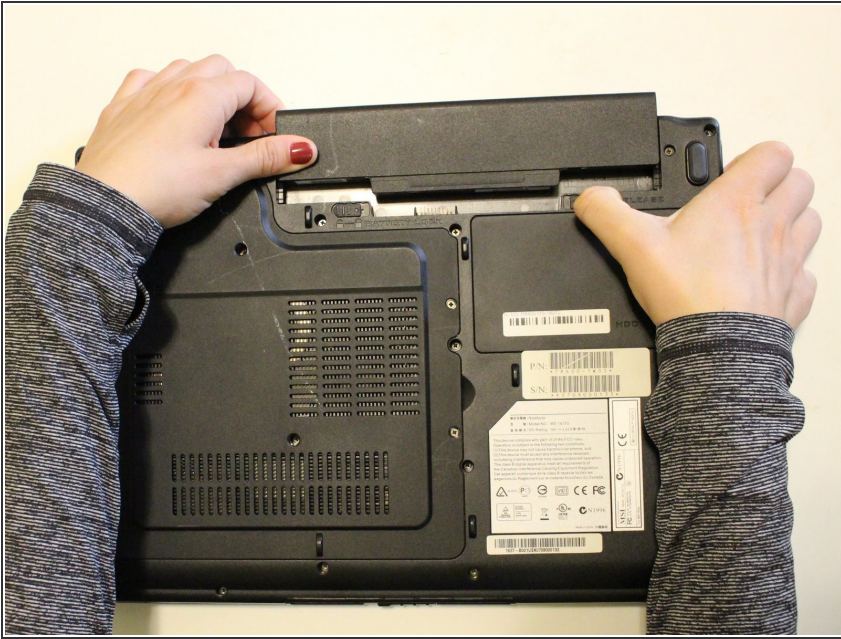
- First, turn off the computer and unplug the power cord.
- ⚠ If laptop is not unplugged from the power cord, you could be at risk of electric shock.

Step 2



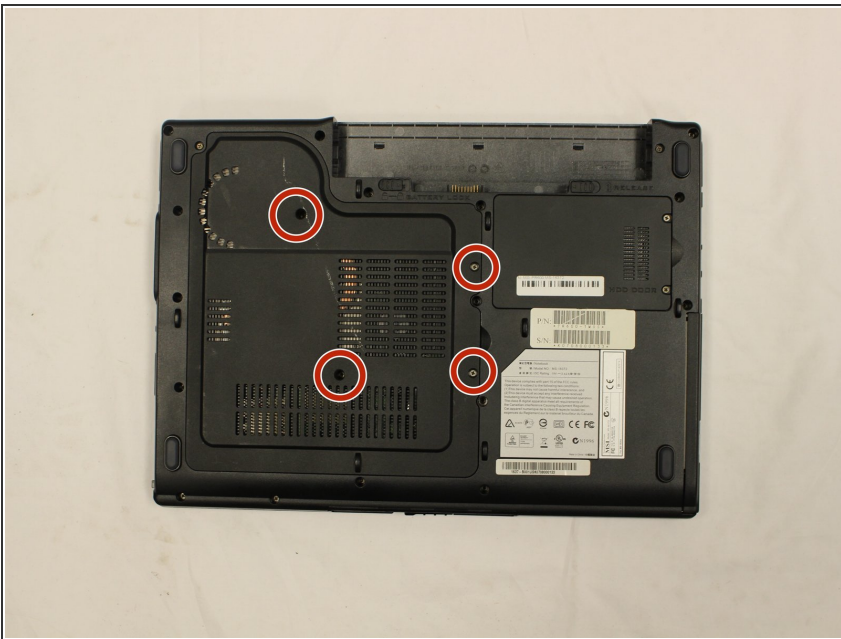
- Flip laptop over so that you are looking at the bottom of the laptop.
- Put your left pointer finger on the switch labeled "Battery lock" and your right pointer finger on the switch labeled "Release".

Step 3



- Switch the tab labeled "Battery lock" to the unlocked position.
- Slide the tab labeled "Release" to the right and hold it down.
- While holding the "Release" tab to the right, slide the battery out with your left hand.

Step 4 — RAM



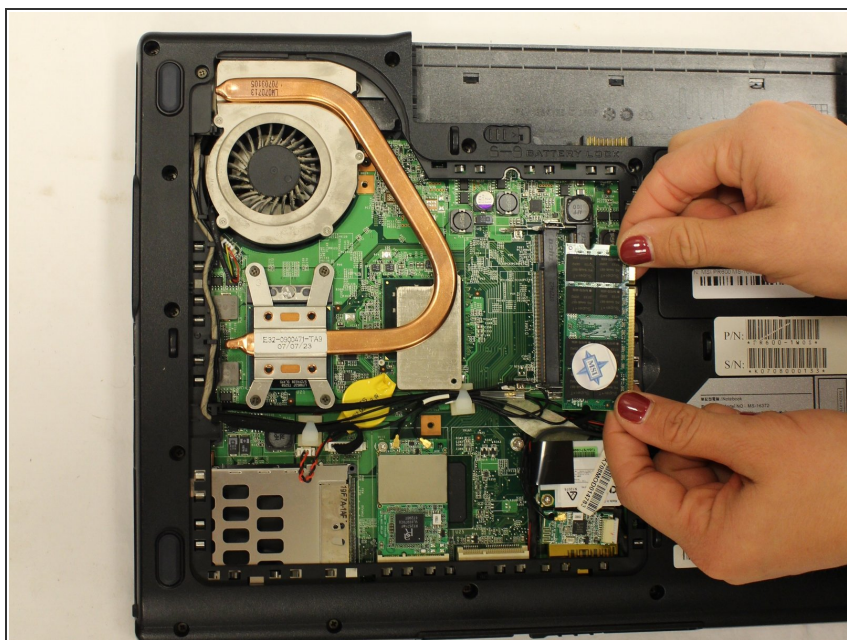
- Unscrew the four 10 mm Phillips head screws circled in red in the picture using the Phillips 00 screwdriver.

Step 5



- Put your pointer finger underneath the tab and lift up to remove the plastic cover.

Step 6



- Slide the RAM off by pulling it away from the fan.
- Slide RAM back in to serve as a reset.

To reassemble your device, follow these instructions in reverse order.