



# MacBook Pro 13" Retina Display Early 2015 Feet Replacement

Replace broken or worn MacBook Pro Retina Early 2015 Feet

Written By: Taylor Dixon



# INTRODUCTION

Have your MacBook Pro feet seen better days? Use this guide to give your early 2015 MacBook Pro a fresh set of feet.



## TOOLS:

- [MacBook Pro and Air 5-Point Pentalobe Screwdriver](#) (1)
- [Tweezers](#) (1)
- [Adhesive Cleanup Kit](#) (1)



## PARTS:

- [MacBook Pro Retina \(A1425, A1502, A1398, and A2289\) Plastic Feet](#) (1)

## Step 1 — Lower Case



- Remove the following ten screws securing the lower case to the upper case:
  - Two 2.3 mm P5 Pentalobe screws
  - Eight 3.0 mm P5 Pentalobe screws
- ☑ Throughout this repair, [keep track of each screw](#) and make sure it goes back exactly where it came from to avoid damaging your device.

## Step 2



- Wedge your fingers between the upper case and the lower case.
- Gently pull the lower case away from the upper case.
- Remove the lower case and set it aside.

## Step 3



- ✦ During reassembly, gently push down the center of the lower case to reattach the two plastic clips.
  - The lower case is connected to the upper case at the center, with two plastic clips.

## Step 4 — Feet



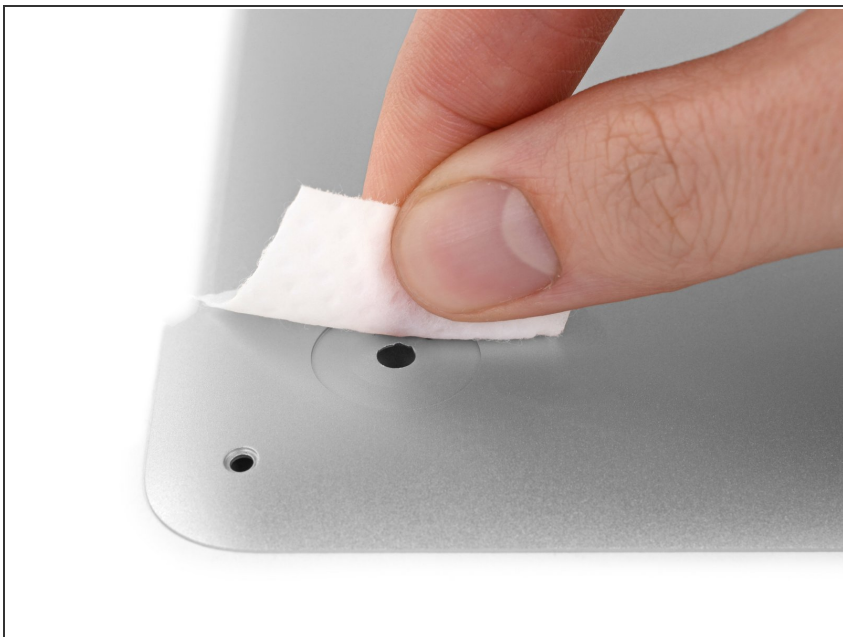
- Peel away any stickers from the backside of the rear case covering the feet you have chosen to replace.
  - ✦ Any stickers you remove will most likely be unsalvageable for re-use. That's okay! Your MacBook does not need them to function.

## Step 5



- Remove any broken or damaged feet.
  - ❗ If the foot you are replacing is still intact, you can use your tweezers push it out from the inside.
- If the old foot is difficult to remove, use a hair dryer or a heat gun to apply some heat to the area and loosen the adhesive.

## Step 6



- Scrub the foot cavity with adhesive remover to remove any remaining adhesive.

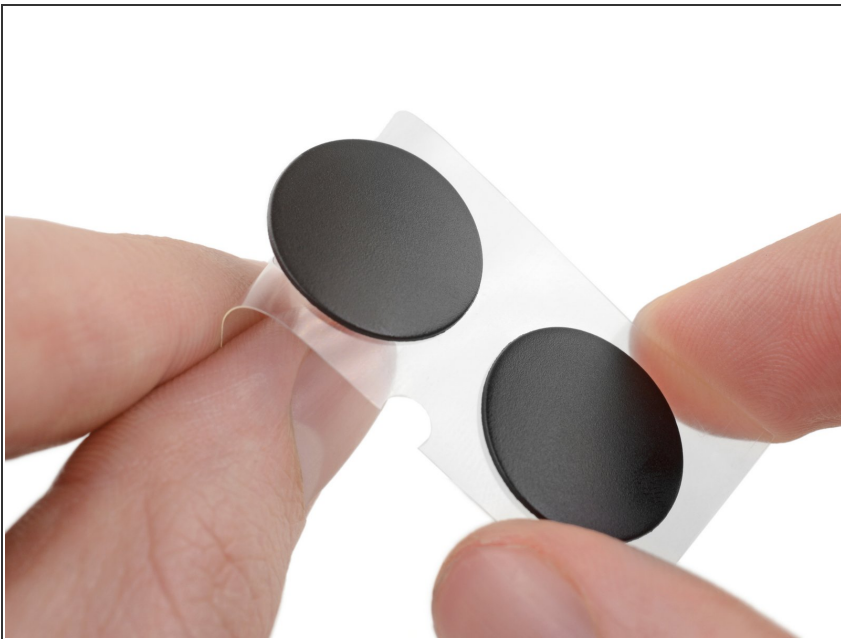


## Step 7



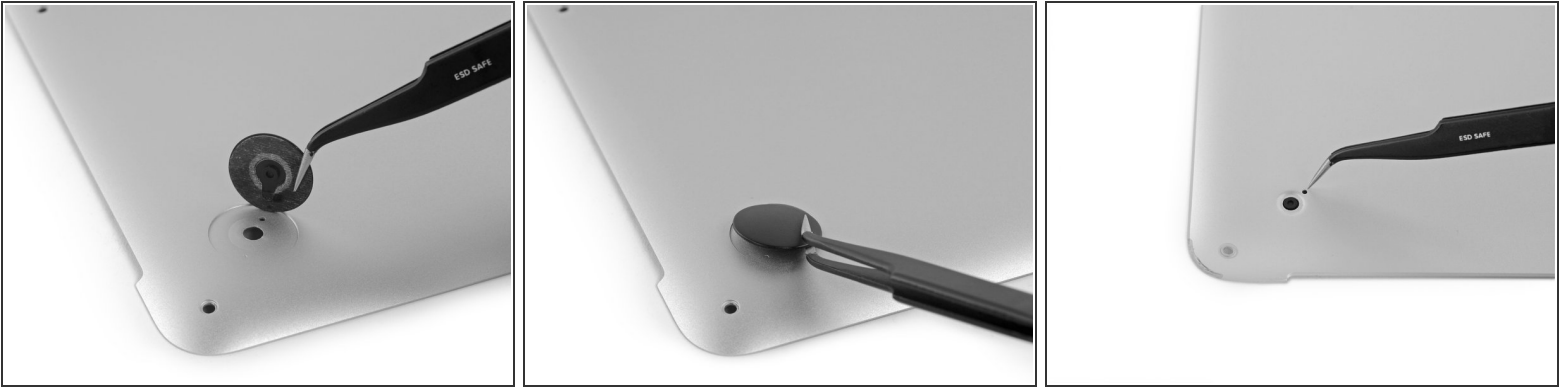
- Wipe the foot cavity with an isopropyl alcohol prep pad to remove any cleaner residue and prep the area for the adhesive on the new foot.

## Step 8



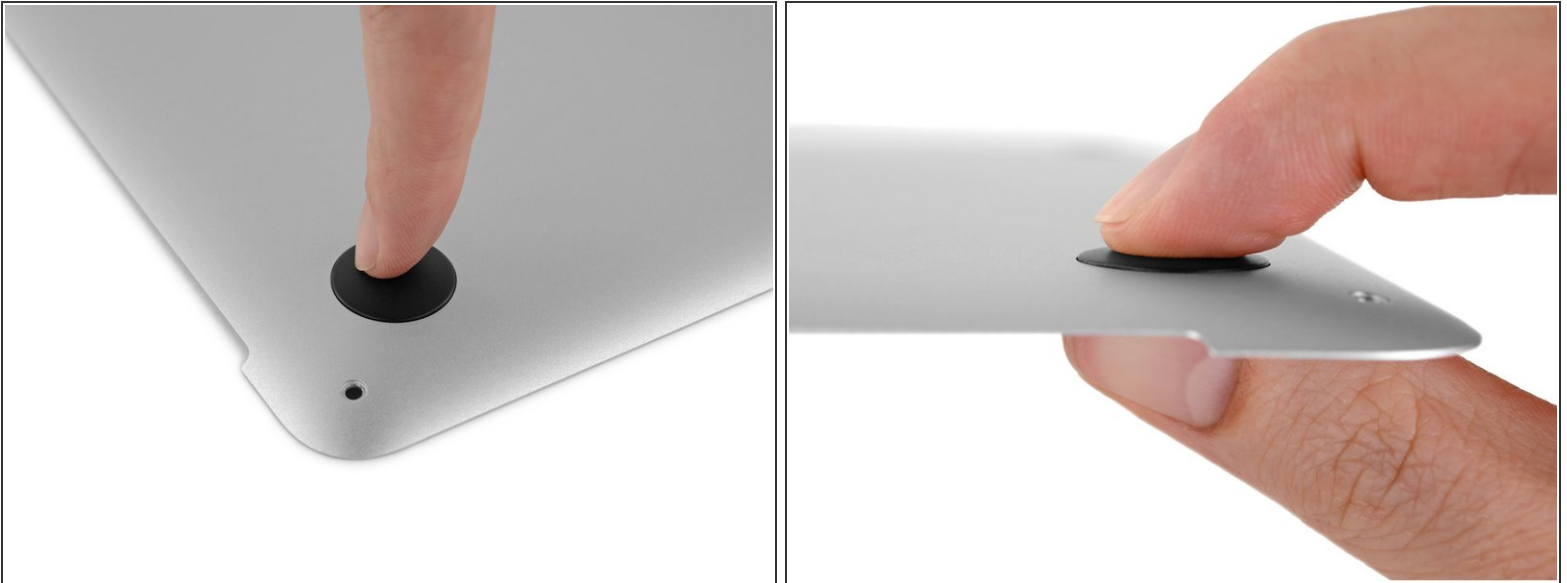
- Peel a replacement foot from the plastic backing.
- ⓘ The adhesive is fairly strong—make sure that you are peeling the foot up, not tearing the plastic backing.

## Step 9



- Align the new foot inside the cavity.
  - ❗ Make sure the alignment nub on the foot is lined up with the small hole near the perimeter of the pad.
  - ❗ You may want to use a pencil to lightly mark where the alignment nub is located. Be careful not to scratch the lower case with your pencil.
- Lay the foot down while keeping it properly aligned.
- Check for proper alignment from the inside of the case. The alignment nub should be slightly visible through the alignment hole.

## Step 10



- Press the new foot into place firmly with your finger, then apply pressure by pinching the foot from either side of the case with your finger and your thumb.
- Maintain pressure for 30 seconds to set the pressure-sensitive adhesive.
- Repeat the last seven steps for any remaining broken or worn feet.

To reassemble your device, follow these instructions in reverse order.