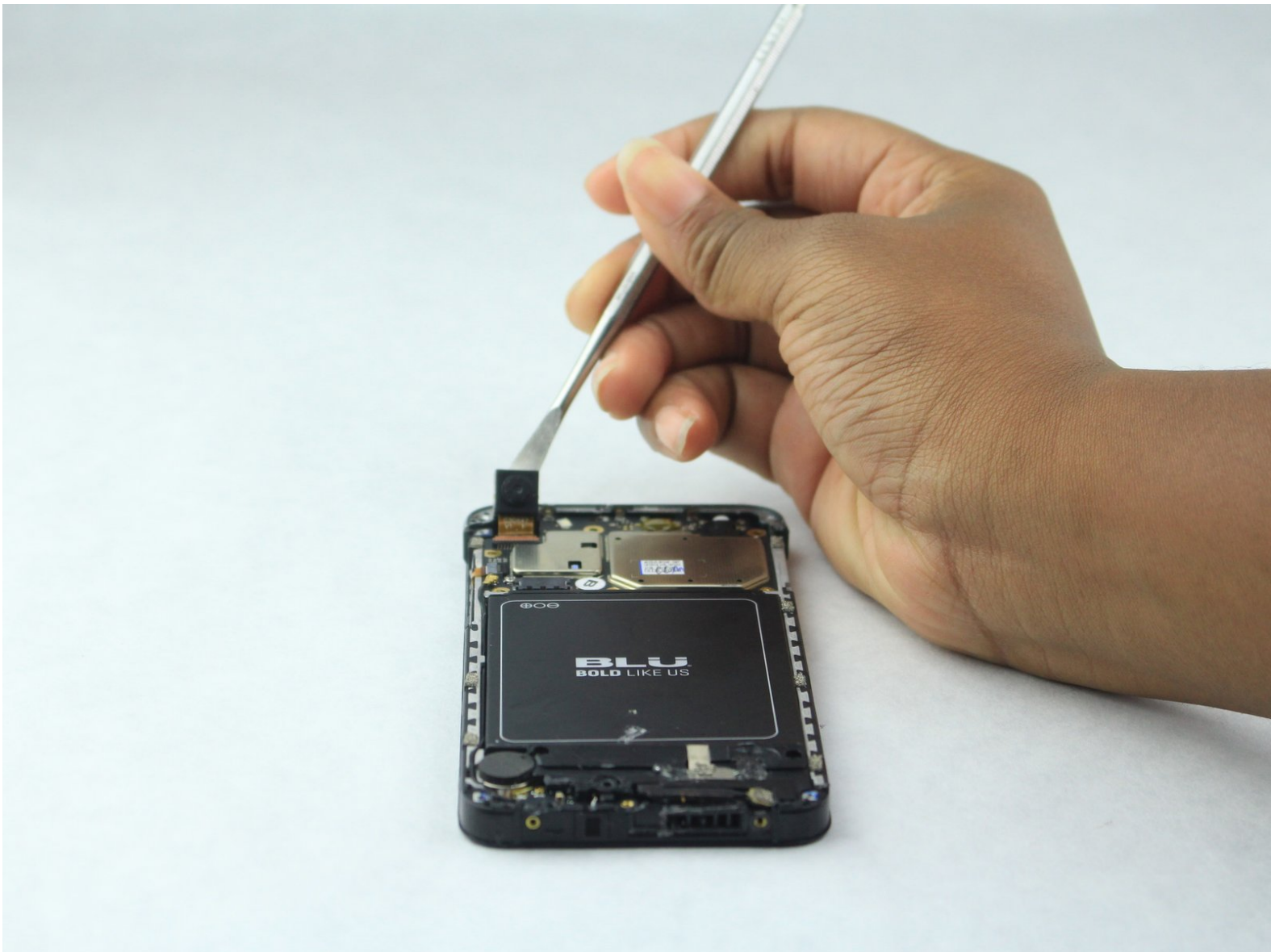




BLU Vivo 5 Mini Camera Replacement

Use this guide to replace both back and front camera lens on BLU Vivo 5 Mini.

Written By: Kymari



INTRODUCTION

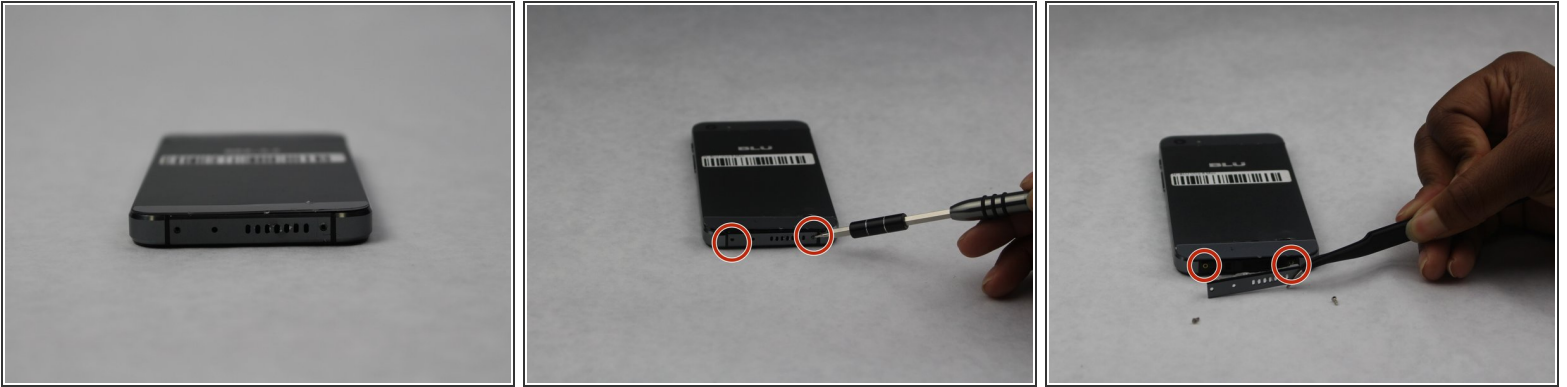
Use this guide to proceed with removing both camera lens.

After completing the prerequisite locate the camera, which is near top left corner of device.

TOOLS:

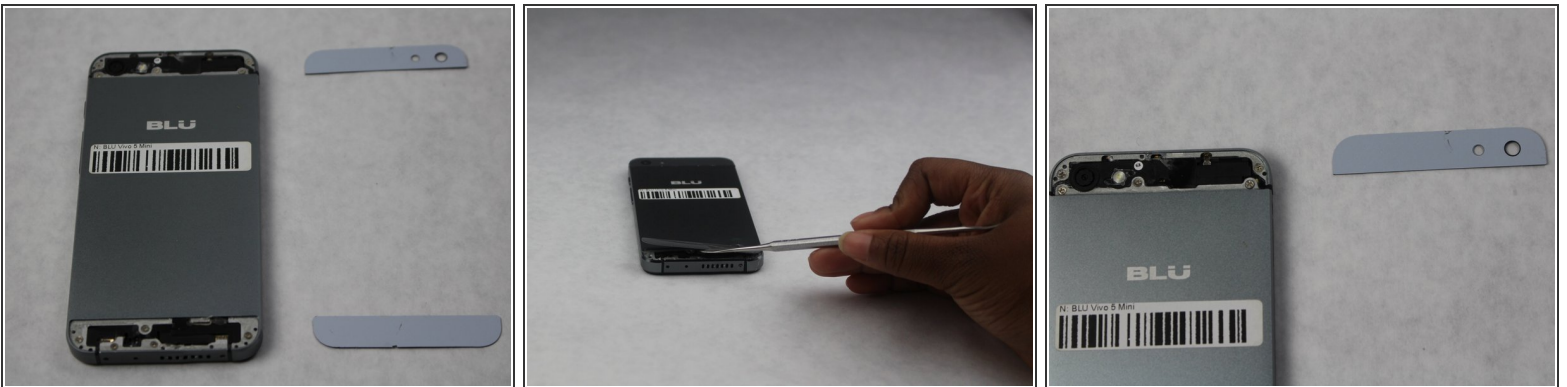
- [Spudger](#) (1)
 - [P2 Pentalobe Screwdriver iPhone](#) (1)
 - [Phillips #000 Screwdriver](#) (1)
 - [SIM Card Eject Tool](#) (1)
 - [Tweezers](#) (1)
-

Step 1 — Back Cover



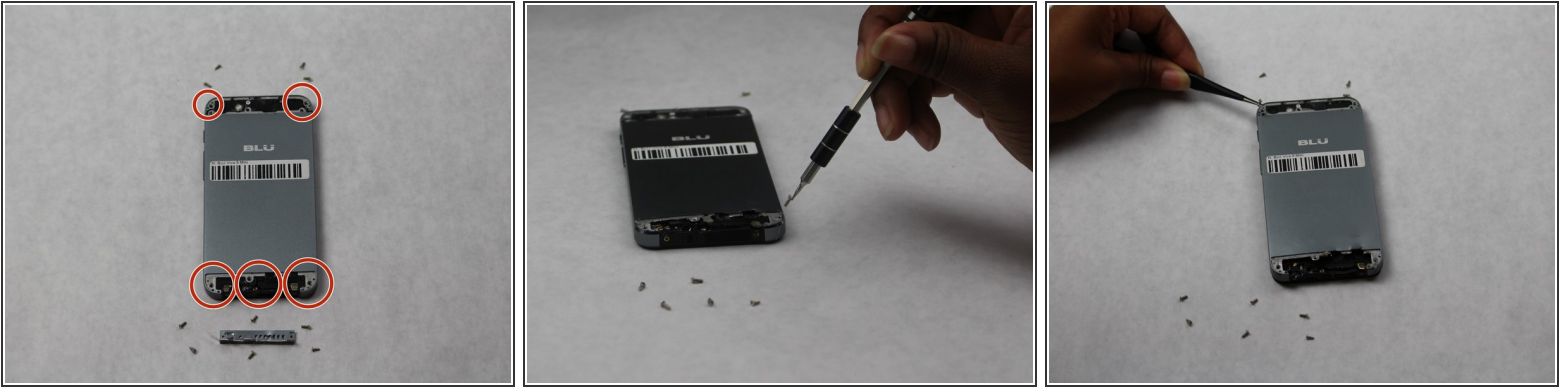
- Remove the 2 screws along the bottom on either side of the speaker port with the size 2 Pentalobe driver.
- After screws are removed, dislodge the speaker and charger port cover from device using the tweezers.

Step 2



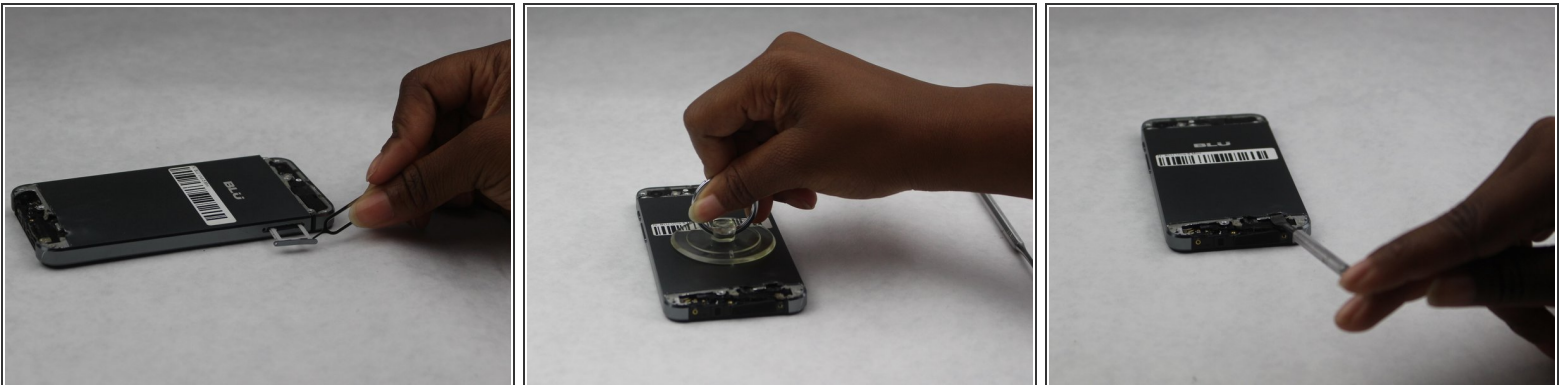
- Remove the top and bottom covers.
- Start by sliding the pick around the edges of both covers. (If you have the glue adhesive removal tool use that instead of pick, as it creates less damage.)
- After freeing the edges gentle start peeling the covers off.

Step 3



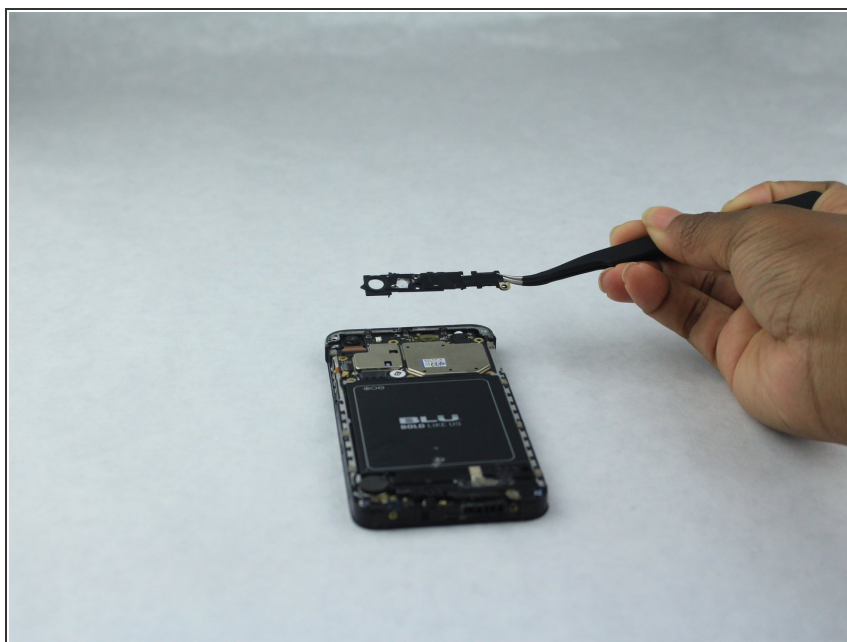
- Using a Phillips #000, remove all 10 screws found on the back of the phone.
- The 6 on the bottom are to be removed with a size PH000 Phillips Head screwdriver.
- The 4 on the top can be removed with the same screwdriver.

Step 4



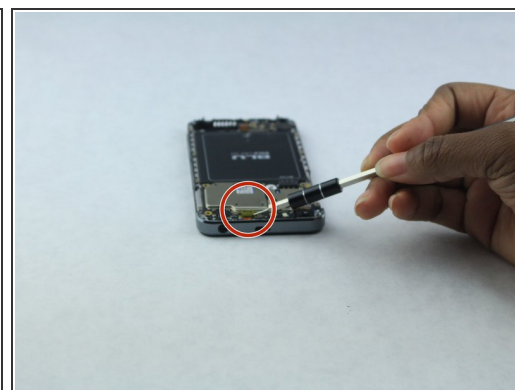
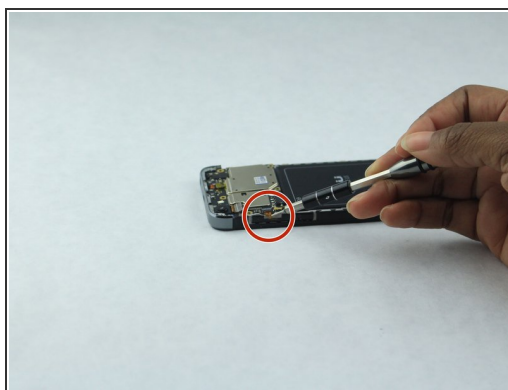
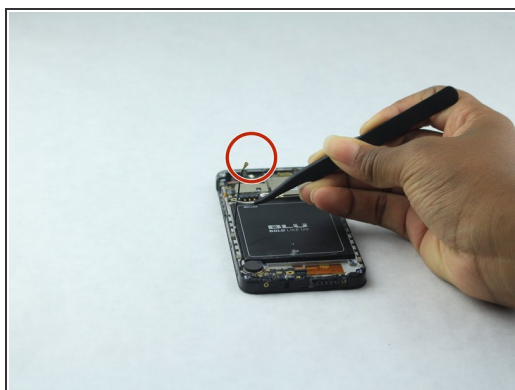
- Completely remove SIM card port from side of phone using the SIM Card Eject Tool.
- Release the back cover (it may be glued down encasing the phone) using the suction device to lift the back off.
- Begin inserting the pick sliding it between the back of the phone and the cover to completely remove back cover, if suction does not lift.

Step 5 — Camera



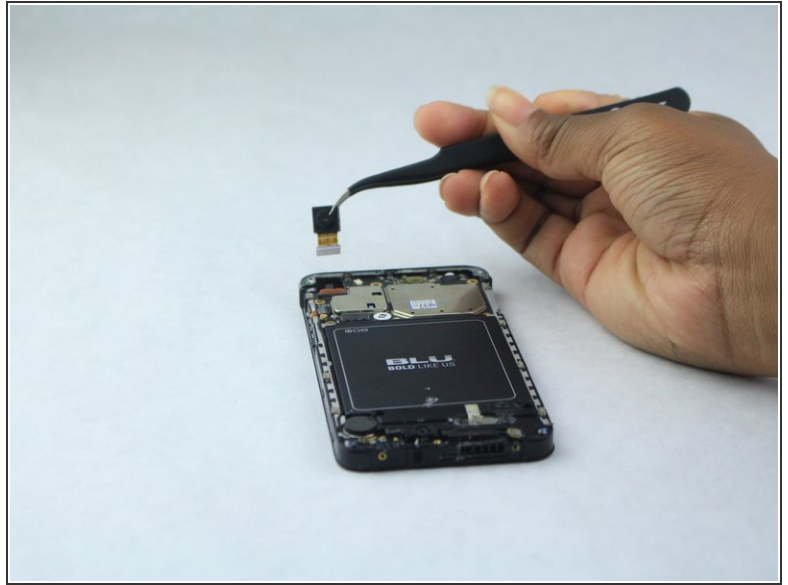
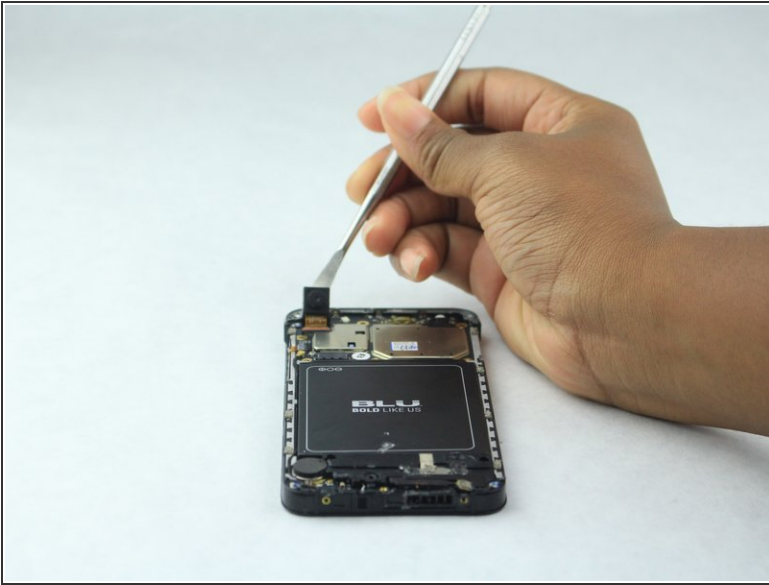
- Using tweezers, remove the top black encasing of the camera.

Step 6



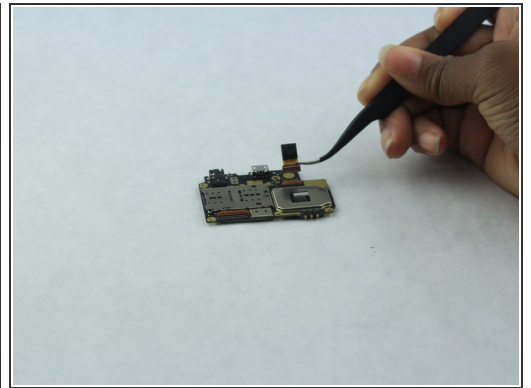
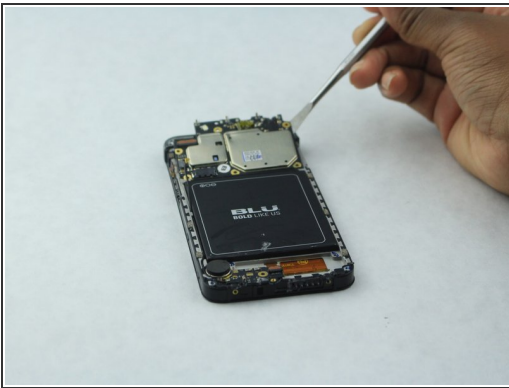
- Using the tweezers unlink the camera gently from the gold wire

Step 7



- Gently lift the back camera from the phone.
- ⓘ Be careful not to smudge the lens. At this time, also check for debris.

Step 8



- Use the spudger to gently lift the motherboard out of the device.
- After completely removing the back camera and motherboard, now check underneath for debris near front lens.
- Front lens can now be removed for replacement.

To reassemble your device, follow these instructions in reverse order.