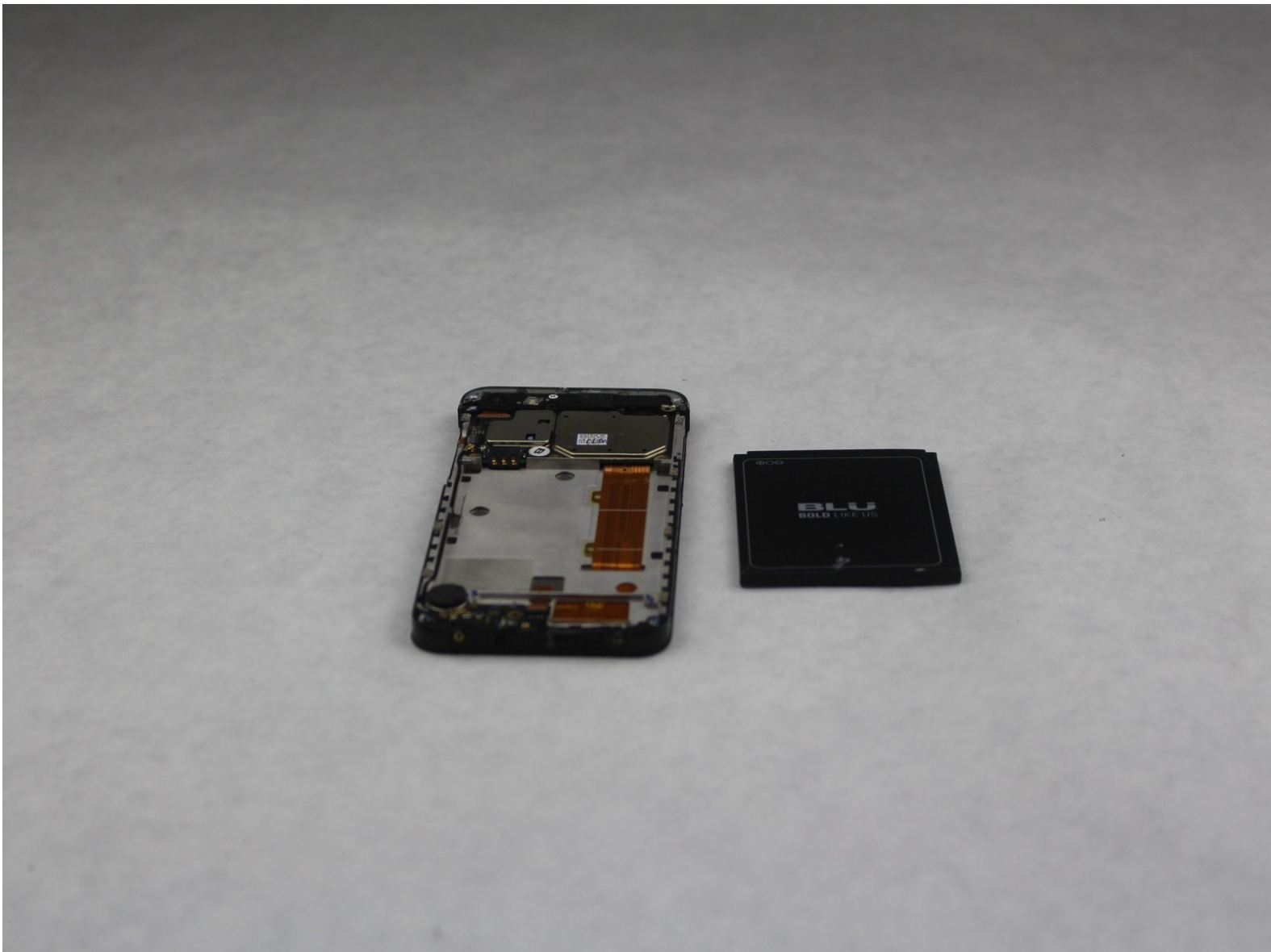




BLU Vivo 5 Mini Battery Replacement

Use this guide to replace the BLU Vivo 5 Mini battery.

Written By: Kymari



INTRODUCTION

Use this guide to replace the battery,

Power on your phone to check battery life, if on charger but not turning on, completely power off and unplug device.

This guide to remove back panel casing; for the use to complete enter the internal area of device.

For better performance and a longer lasting charge: Drain battery below 10% , and then proceed to charge it without interruptions to 100%.



TOOLS:

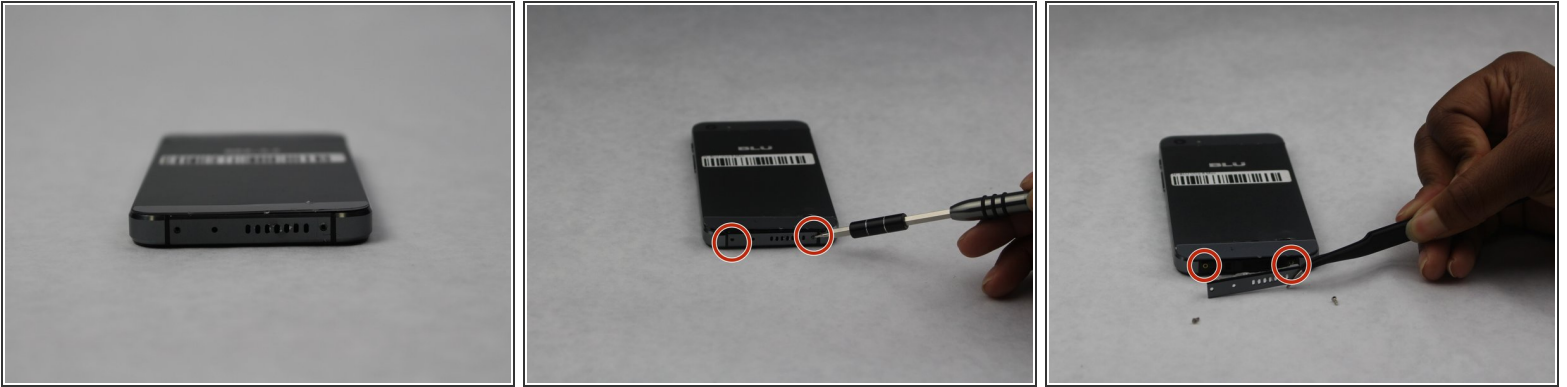
- [Spudger](#) (1)
- [P2 Pentalobe Screwdriver iPhone](#) (1)
- [Phillips #000 Screwdriver](#) (1)
- [SIM Card Eject Tool](#) (1)
- [Pick Tool](#) (1)
- [Tweezers](#) (1)
- [Suction Handle](#) (1)



PARTS:

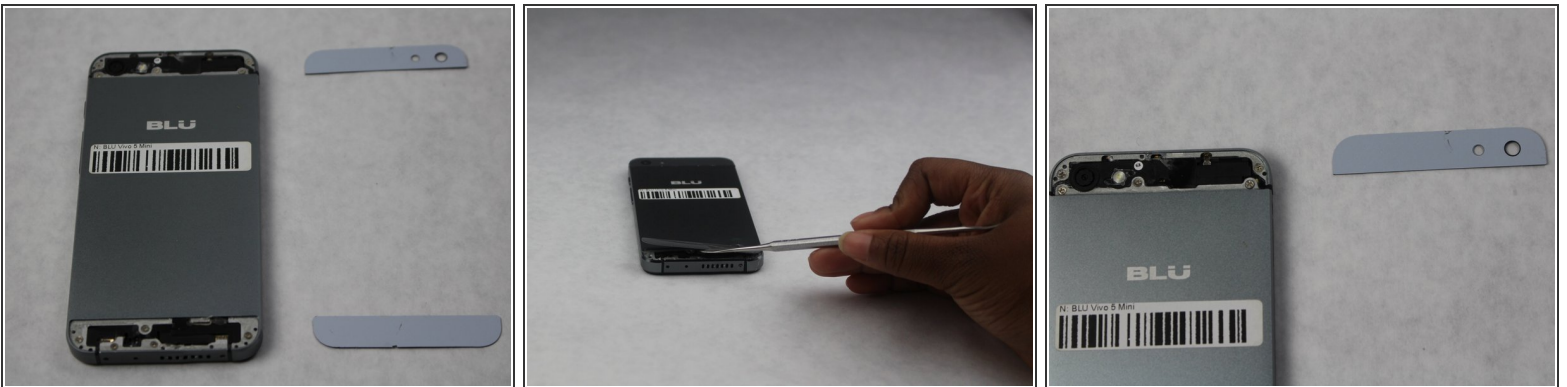
- [Battery](#) (1)

Step 1 — Back Cover



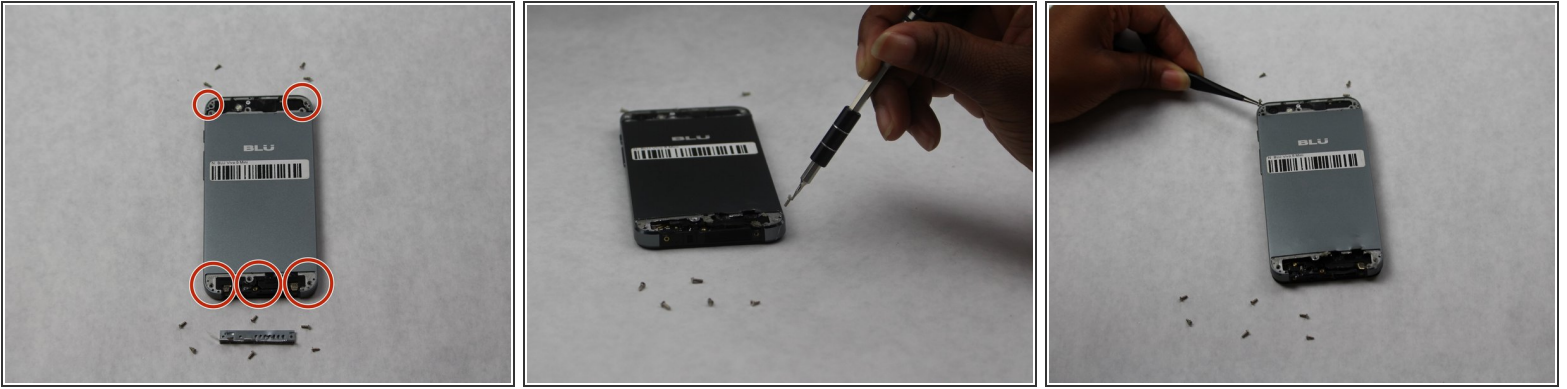
- Remove the 2 screws along the bottom on either side of the speaker port with the size 2 Pentalobe driver.
- After screws are removed, dislodge the speaker and charger port cover from device using the tweezers.

Step 2



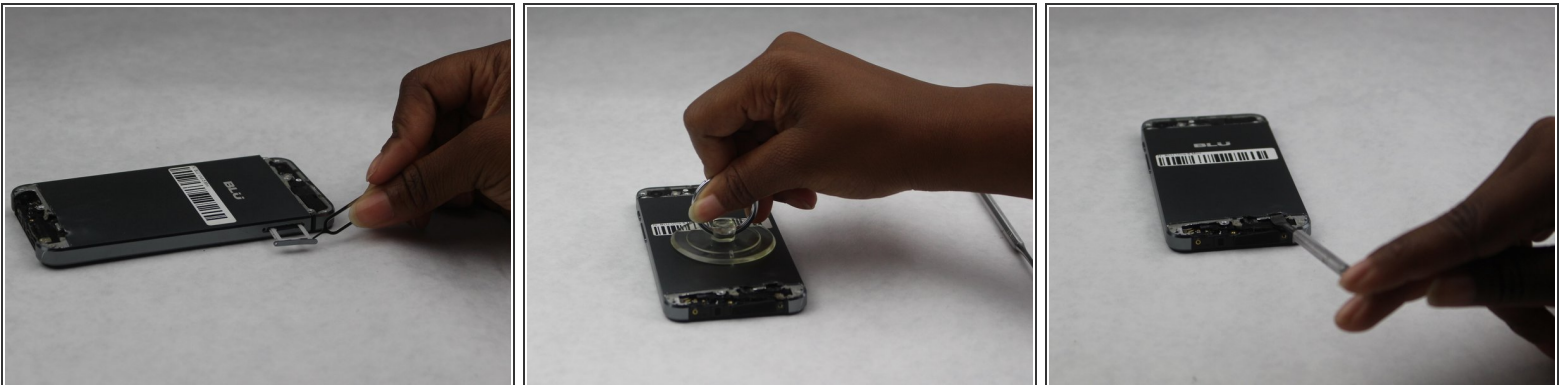
- Remove the top and bottom covers.
- Start by sliding the pick around the edges of both covers. (If you have the glue adhesive removal tool use that instead of pick, as it creates less damage.)
- After freeing the edges gentle start peeling the covers off.

Step 3



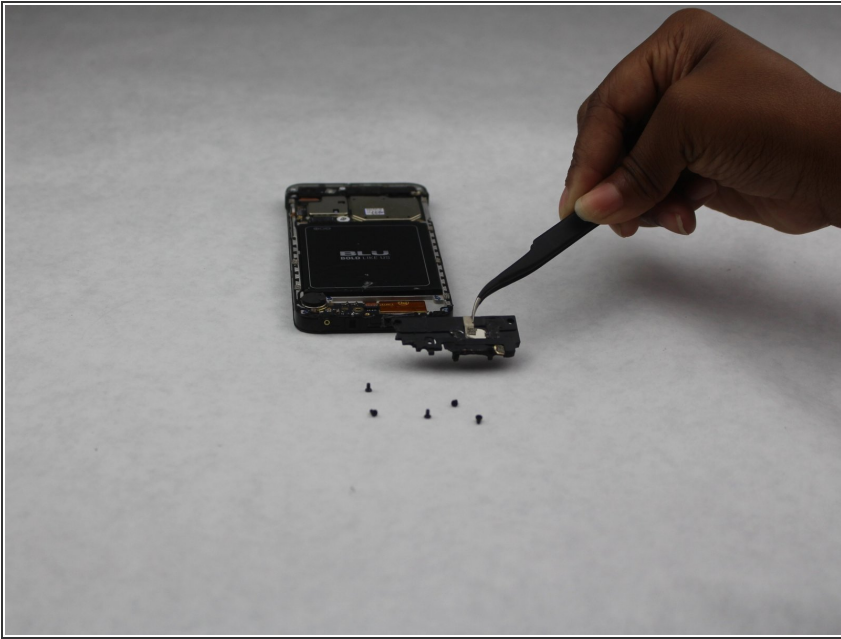
- Using a Phillips #000, remove all 10 screws found on the back of the phone.
- The 6 on the bottom are to be removed with a size PH000 Phillips Head screwdriver.
- The 4 on the top can be removed with the same screwdriver.

Step 4



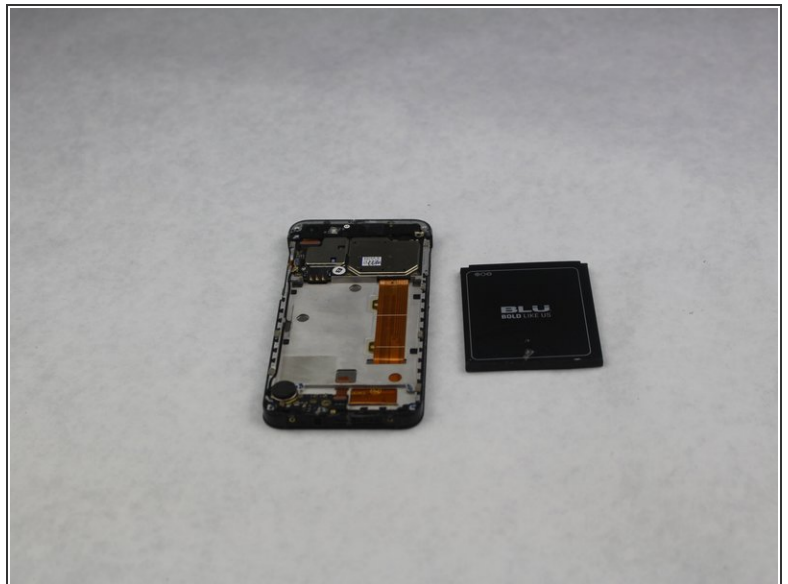
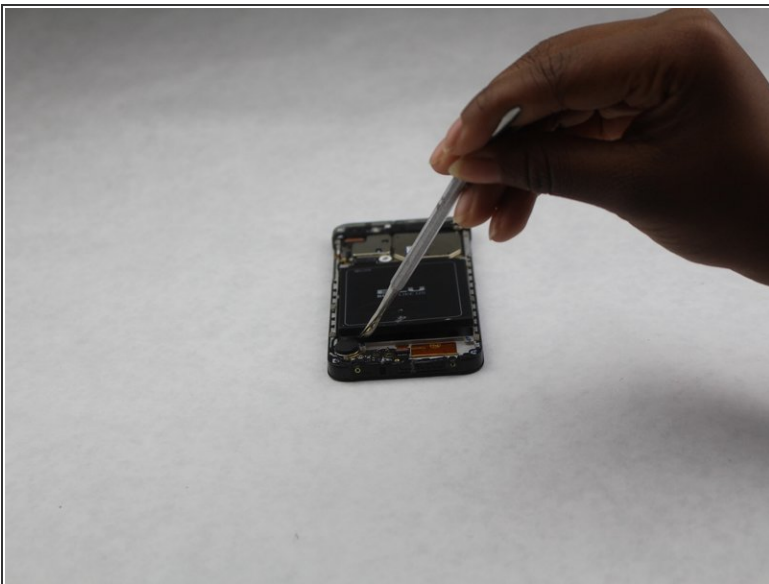
- Completely remove SIM card port from side of phone using the SIM Card Eject Tool.
- Release the back cover (it may be glued down encasing the phone) using the suction device to lift the back off.
- Begin inserting the pick sliding it between the back of the phone and the cover to completely remove back cover, if suction does not lift.

Step 5 — Battery



- Remove the leftover screws using the PH000 screwdriver and release the bottom speaker holder piece.

Step 6



- After fully removing the black speaker piece, the battery should be able to easily lift out with the aid of the suction cup or spudger. (If difficult, carefully use pick to ease battery out of device.)

To reassemble your device, follow these instructions in reverse order.

This document was generated on 2020-11-28 07:08:49 AM (MST).

