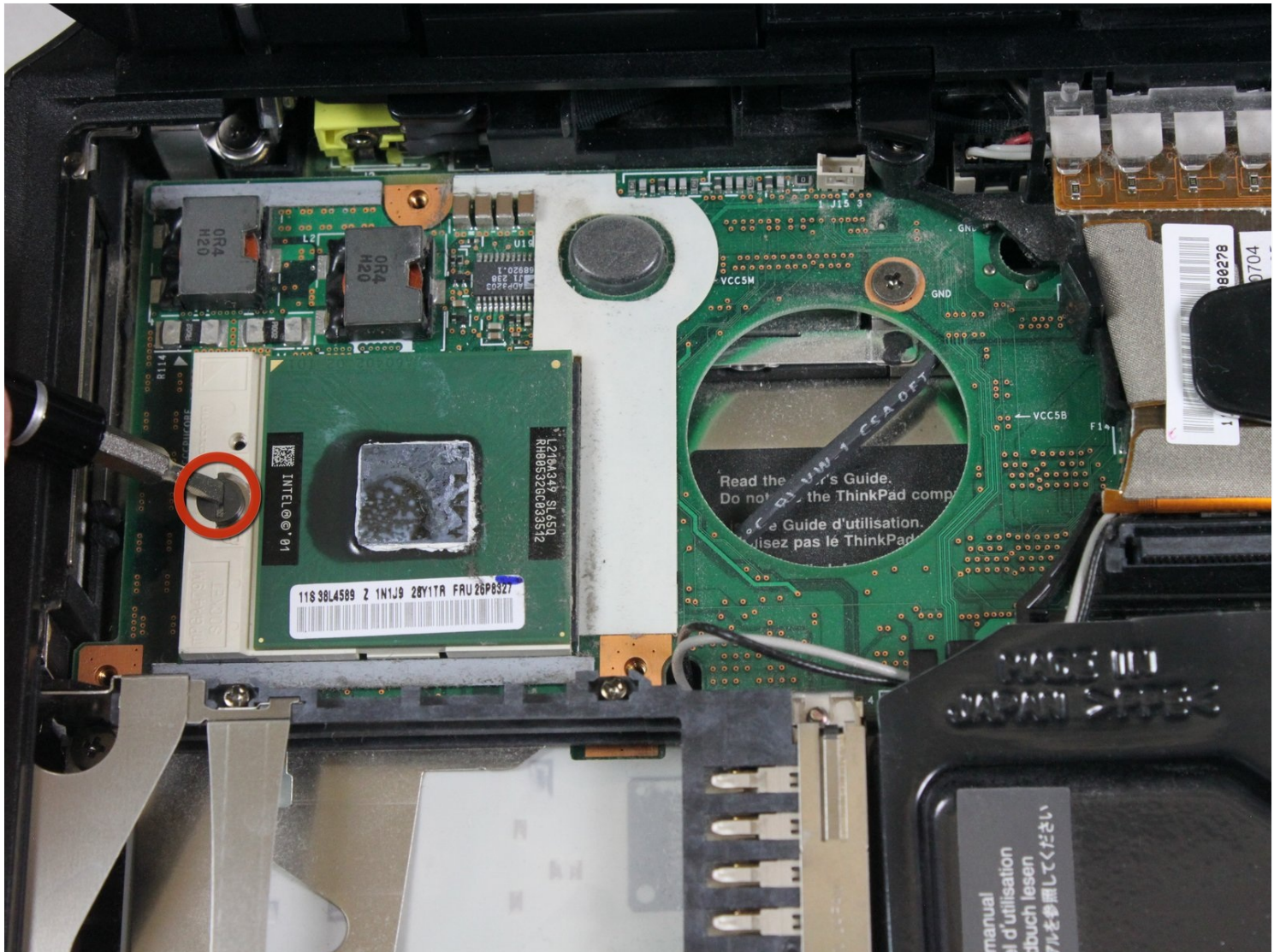




IBM ThinkPad T30 Processor Replacement

Use this guide to replace your processor.

Written By: Alex Kost



INTRODUCTION

Use this guide to replace your processor.

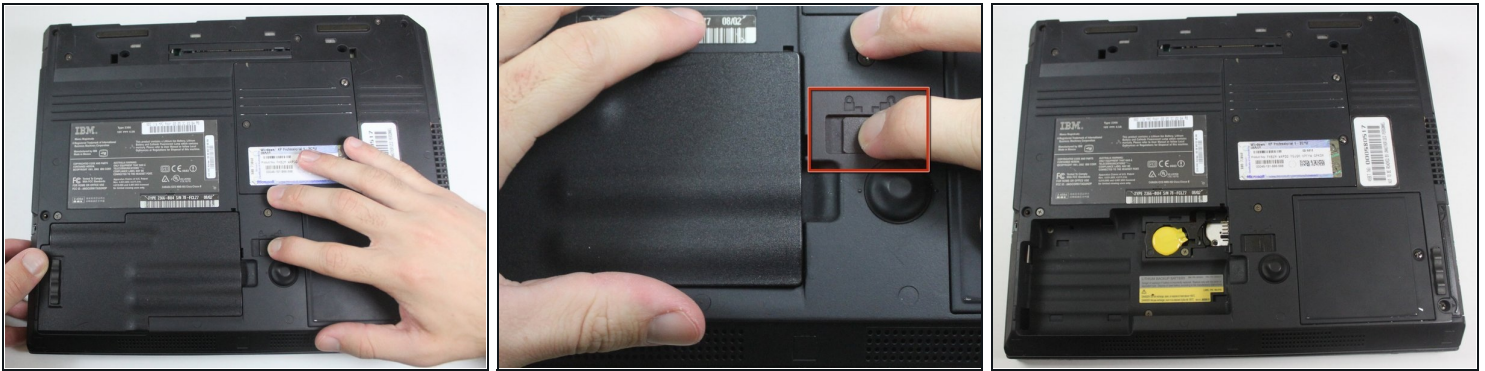
TOOLS:


Phillips #0 Screwdriver (1)

Flathead 3/32" or 2.5 mm Screwdriver (1)

iFixit Opening Tool (1)

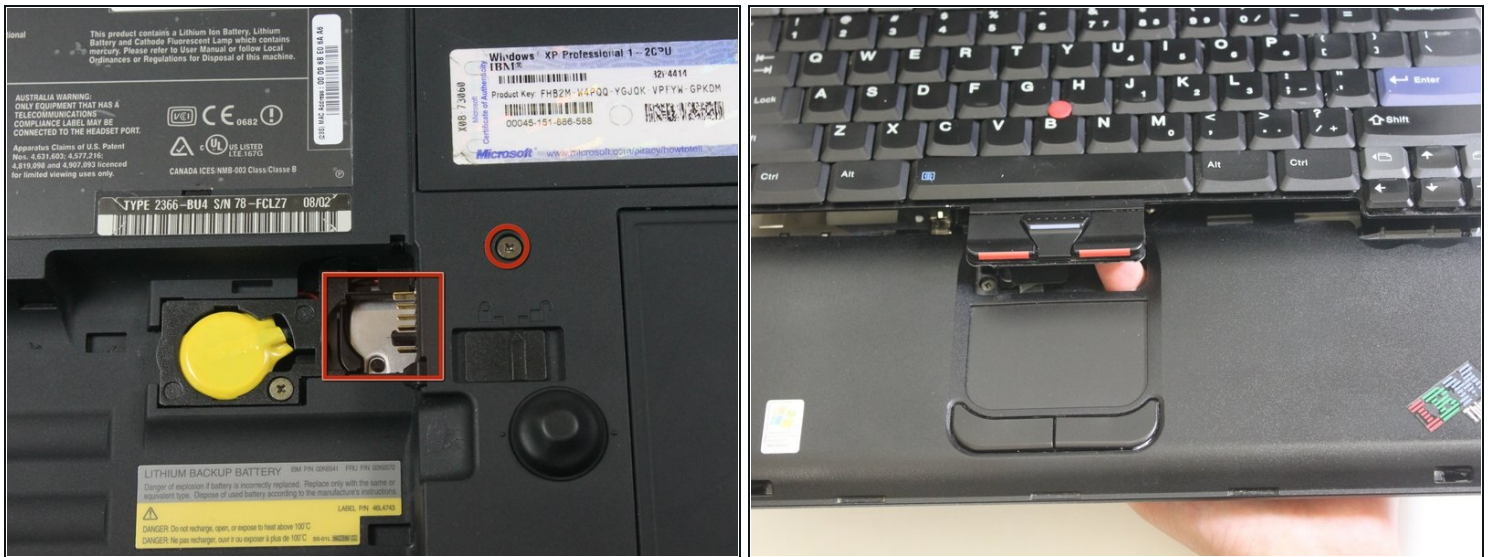
Step 1 — Battery



 Make sure the ThinkPad is off and the power supply is unplugged.

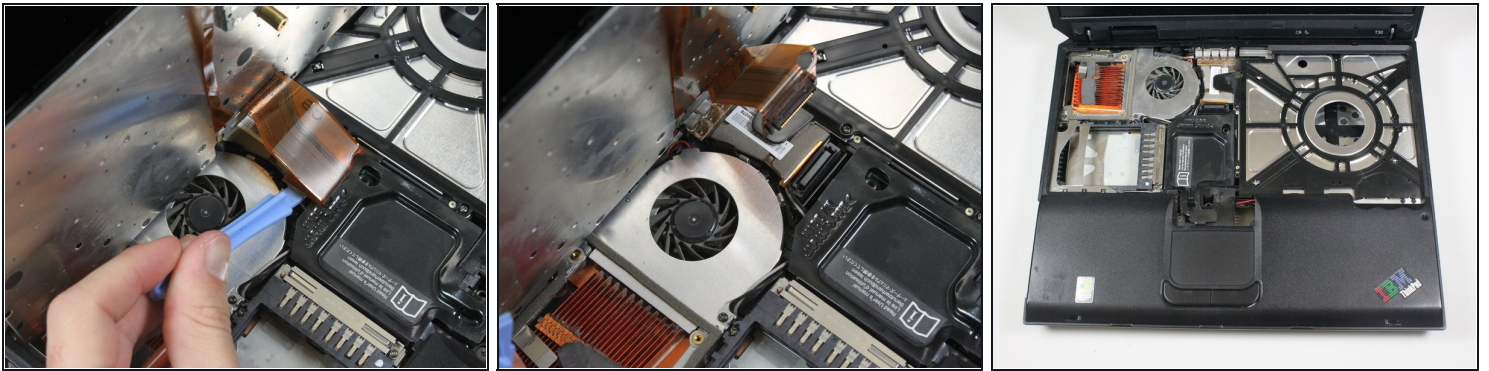
- Flip the ThinkPad upside down with the bottom facing you.
- Slide the latch to the right into the unlock position.
- While holding the latch in the unlock position, lift the battery out with your other hand.

Step 2 — Keyboard



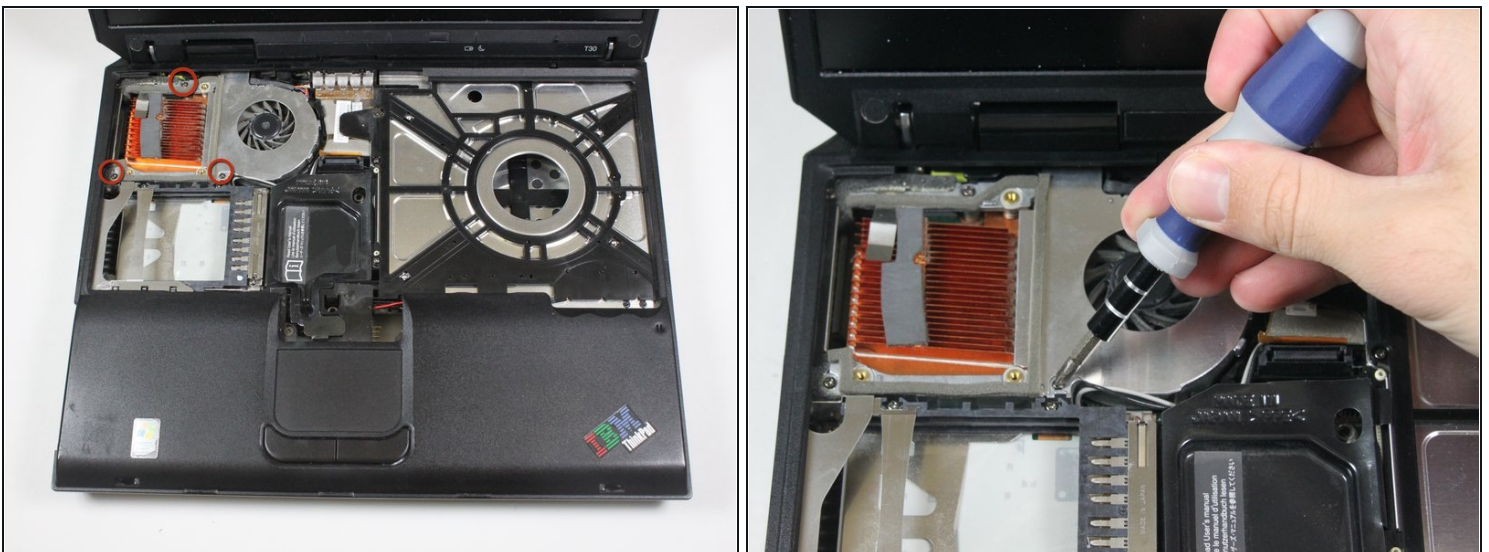
- Begin by removing the two black 16 mm Phillips #0 screws. The screws can be identified by the two notches next to each screw. One (marked in red) is near the battery lock and the other (not pictured) is next to the Wi-Fi cover.
 - Push up the bottom of the keyboard by poking your finger through the hole to the right of the yellow bios battery. You will feel slight resistance.
- ⚠ Be sure to not lift the keyboard too far. It is still attached to the computer with a ribbon connector.

Step 3



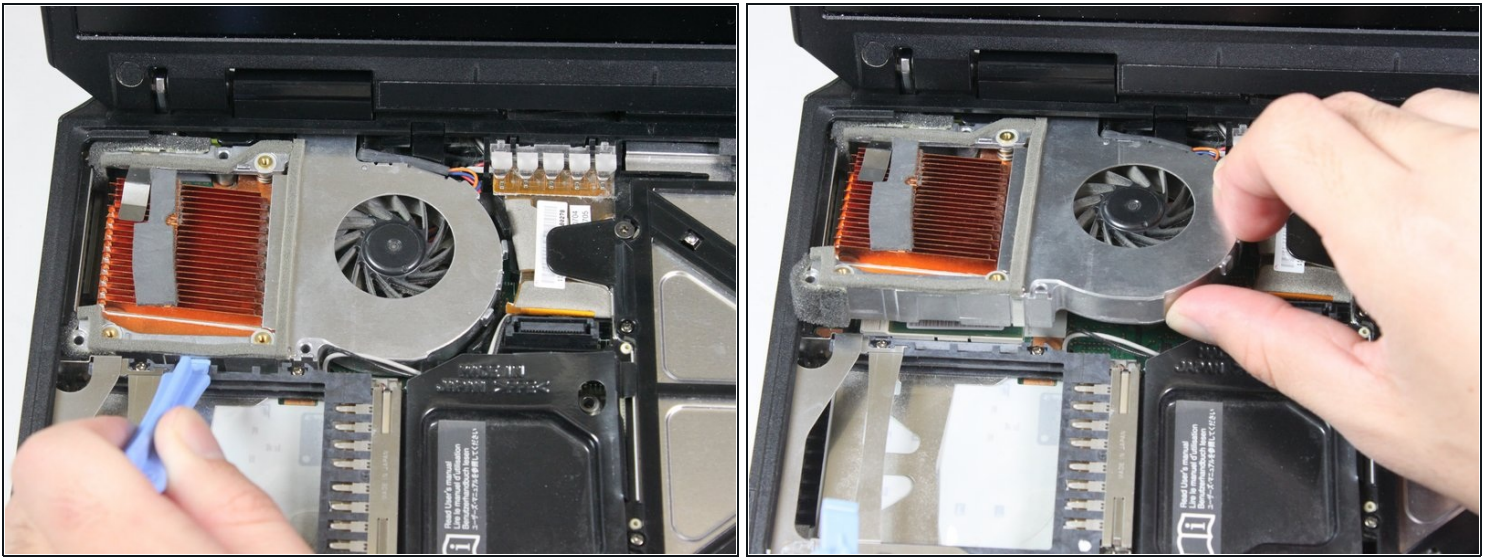
- Lift the keyboard to expose the ribbon connector and lean it against the computer screen to keep the ribbon intact.
- ⓘ If the ribbon is broken, the keyboard is permanently unusable and needs to be replaced
- Use the plastic opening tool to gently pry the connector up from the motherboard.
- You can now safely remove the keyboard.

Step 4 — Fan Assembly



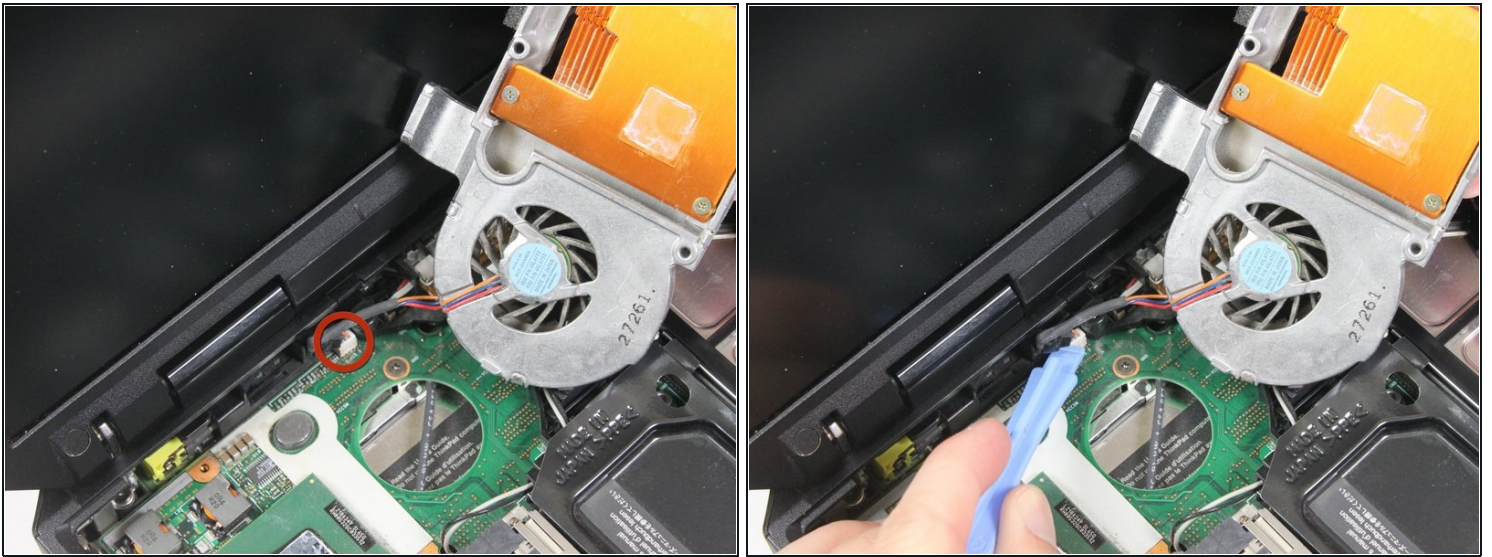
- Remove the three 4 mm Phillips #0 screws securing the fan assembly.

Step 5



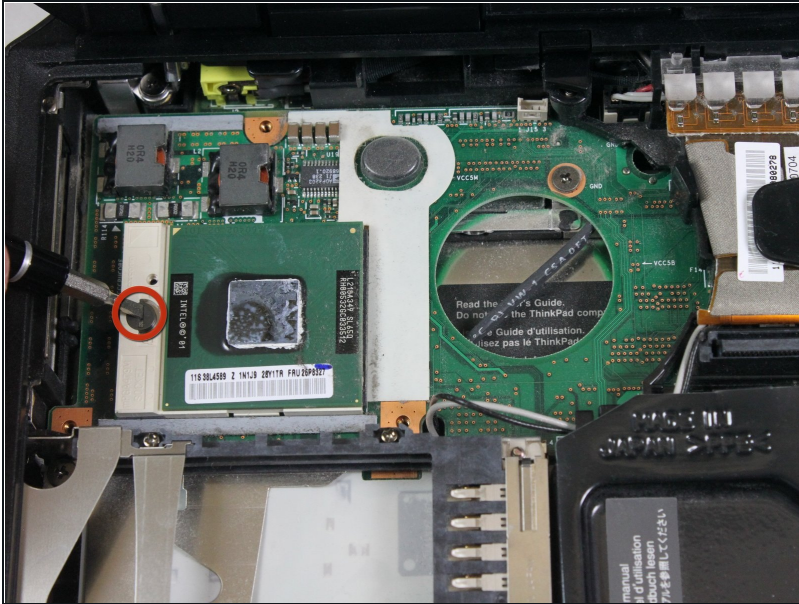
- Using the plastic opening tool, gently pry the heat sink assembly up.
- ☒ Be sure to reapply thermal compound on the processor and heat sink when reassembling the device.
- ☒ Be aware that there still is a wire attached to the fan that is connected to motherboard upon removal.

Step 6



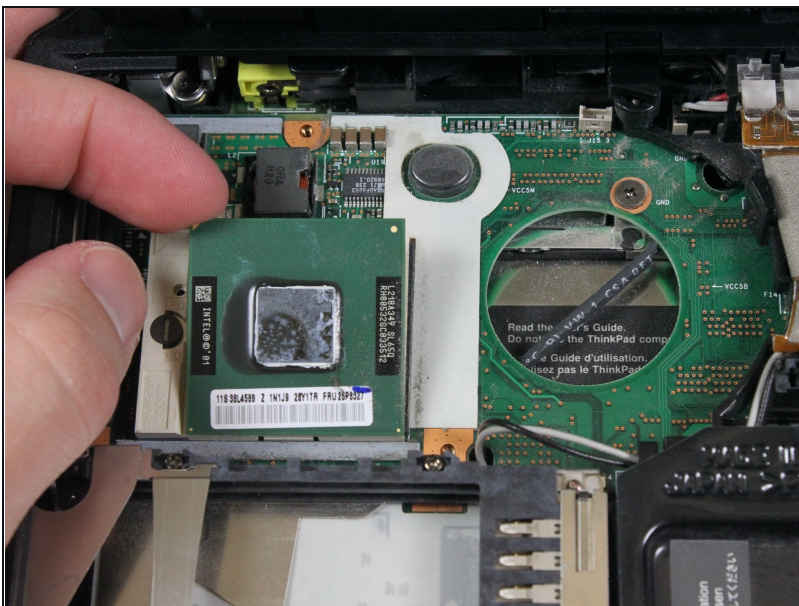
- Using the plastic opening tool, gently lift the white connector out of its socket on the motherboard.
- ① Before installing the new fan, remove all remnants of thermal compound from the top of the CPU. Warning—the stuff is hard to clean off clothing. Spread a small amount of fresh heat sink compound (DC-340 or equivalent) on the top of the CPU to form a thin coat. Be sure the mating fan heat sink is clean.
- Follow iFixit's guide for [\[invalid guide link\]](#) for a detailed explanation.

Step 7 — Processor



- To remove the processor, set the dial on the processor socket to unlock using a small screwdriver
- Unscrew until processor looks like it "lifts" a little.

Step 8



- Gently lift up one side of the processor to unseat, then remove completely from device.
- ⚠ Processor pins and corners are pointy--be careful!
- ⚠ Beware of the pins, don't bend them!

To reassemble your device, follow these instructions in reverse order.